

# Human sICAM-1 ELISA Kit

Enzyme-linked Immunosorbent Assay for quantitative detection of human ICAM-1

**Catalog Numbers** BMS241 or BMS241TEN

**Pub. No.** MAN0016618 **Rev.** A.0 (30)

**WARNING!** Read the Safety Data Sheets (SDSs) and follow the handling instructions. Wear appropriate protective eyewear, clothing, and gloves. Safety Data Sheets (SDSs) are available from [thermofisher.com/support](http://thermofisher.com/support).

## Product description

The Human sICAM-1 ELISA Kit (extra sensitive) is an enzyme-linked immunosorbent assay for the quantitative detection of human ICAM-1.

## Summary

Intercellular Adhesion Molecule-1 (ICAM-1) is a member of the immunoglobulin supergene family and functions as a ligand for the Lymphocyte Function-Associated Antigen-1 (LFA-1), an  $\alpha$ - $\beta$ -complex that is a member of the leukocyte integrin family of cell-cell and cell-matrix receptors. This family consists of the leukocyte adhesion glycoproteins LFA-1 which mediates lymphocyte adhesion, Mac-1 which mediates granulocyte adhesion and p150,95.

ICAM-1 is a single-chain glycoprotein with a polypeptide core of 55 kD that can be expressed on non-hematopoietic cells of many lineages such as vascular endothelial cells, thymic epithelial cells, other epithelial cells and fibroblasts and on hematopoietic cells such as tissue macrophages, mitogen-stimulated T-lymphoblasts, germinal center B-cells and dendritic cells in tonsils, lymph nodes and Peyer's patches. ICAM-1 is inducible on fibroblasts and endothelial cells by inflammatory mediators such as IL-1, TNF and IFN  $\gamma$  within few hours and is correlated to the infiltration of lymphocytes into inflammatory lesions. ICAM-1 seems to be the initial marker of inflammatory reactions and is expressed prior to, and to a greater extent than is HLA-DR.

The role of ICAM-1 as a disease marker has been demonstrated for a number of different indications and pathological situations.

For literature update refer to our website.

## Principles of the test

An anti-human ICAM-1 coating antibody is adsorbed onto microwells.

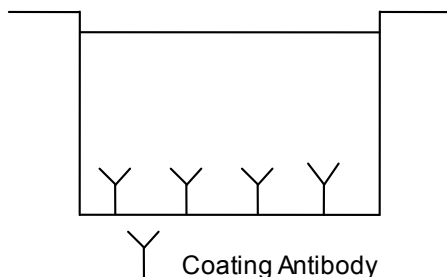


Fig. 1 Coated microwell

Human ICAM-1 present in the sample or standard binds to antibodies adsorbed to the microwells. A HRP-conjugated anti-human ICAM-1 antibody is added and binds to human ICAM-1 captured by the first antibody.

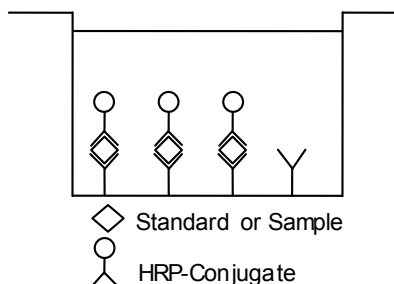


Fig. 2 First incubation

Following incubation unbound HRP-conjugated anti-human ICAM-1 is removed during a wash step, and substrate solution reactive with HRP is added to the wells.

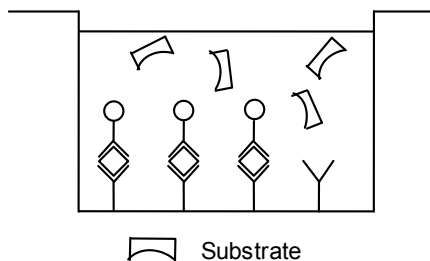


Fig. 3 Second incubation

A colored product is formed in proportion to the amount of human ICAM-1 present in the sample or standard. The reaction is terminated by addition of acid and absorbance is measured at 450 nm. A standard curve is prepared from 5 human ICAM-1 standard dilutions and human ICAM-1 concentration determined.

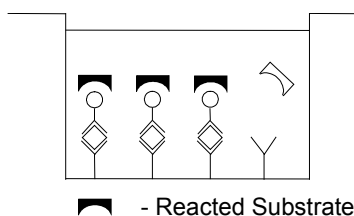


Fig. 4 Stop reaction

## Reagents provided

### Reagents for human ICAM-1 ELISA (extra sensitive) BMS241 (96 tests)

- 1 aluminum pouch with a Microwell Plate (12 strips of 8 wells each) coated with monoclonal antibody to human ICAM-1
- 1 vial (200  $\mu$ L) HRP-Conjugate anti-human ICAM-1 monoclonal antibody
- 2 vials (500  $\mu$ L) human ICAM-1 Standard, 10 ng/mL
- 1 bottle (50 mL) Sample Diluent
- 1 vial (5 mL) Assay Buffer Concentrate 20x (PBS with 1% Tween™ 20, 10% BSA)

1 bottle (50 mL) Wash Buffer Concentrate 20x (PBS with 1% Tween™ 20)

1 vial (15 mL) Substrate Solution (tetramethyl-benzidine)

1 vial (15 mL) Stop Solution (1M Phosphoric acid)

2 Adhesive Films

### Reagents for human ICAM-1 ELISA BMS241TEN (extra sensitive) (10x96 tests)

10 aluminum pouches with a Microwell Plate (12 strips of 8 wells each) coated with monoclonal antibody to human ICAM-1

10 vials (200 µL) HRP-Conjugate anti-human ICAM-1 monoclonal antibody

10 vials (500 µL) human ICAM-1 Standard, 10 ng/mL

10 bottles (50 mL) Sample Diluent

1 vial (5 mL) Assay Buffer Concentrate 20x (PBS with 1% Tween™ 20, 10% BSA)

3 bottles (50 mL) Wash Buffer Concentrate 20x (PBS with 1% Tween™ 20)

10 vials (15 mL) Substrate Solution (tetramethyl-benzidine)

1 vial (100 mL) Stop Solution (1M Phosphoric acid)

10 Adhesive Films

### Storage instructions – ELISA kit

Store kit reagents between 2°C and 8°C. Immediately after use remaining reagents should be returned to cold storage (2°C to 8°C). Expiry of the kit and reagents is stated on labels.

Expiry of the kit components can only be guaranteed if the components are stored properly, and if, in case of repeated use of one component, this reagent is not contaminated by the first handling.

### Sample collection and storage instructions

Cell culture supernatant, serum, plasma (EDTA, citrate, heparin), amniotic fluid, spontaneous urine and bile were tested with this assay. Other biological samples might be suitable for use in the assay. Remove serum or plasma from the clot or cells as soon as possible after clotting and separation. Samples containing a visible precipitate must be clarified prior to use in the assay. Do not use grossly hemolyzed or lipemic samples.

Samples should be aliquoted and must be stored frozen at –20°C to avoid loss of bioactive human ICAM-1. If samples are to be run within 24 hours, they may be stored at 2°C to 8°C (refer to “Sample stability” on page 6). Avoid repeated freeze-thaw cycles. Prior to assay, the frozen sample should be brought to room temperature slowly and mixed gently. To measure human ICAM-1 in spontaneous urine use undiluted samples. Cell culture media without serum component are not suitable for human ICAM-1 determination with the ELISA.

### Materials required but not provided

- 5 mL and 10 mL graduated pipettes
- 5 µL to 1000 µL adjustable single channel micropipettes with disposable tips
- 50 µL to 300 µL adjustable multichannel micropipette with disposable tips
- Multichannel micropipette reservoir
- Beakers, flasks, cylinders necessary for preparation of reagents
- Device for delivery of wash solution (multichannel wash bottle or automatic wash system)
- Microwell strip reader capable of reading at 450 nm (620 nm as optional reference wave length)
- Glass-distilled or deionized water
- Statistical calculator with program to perform regression analysis

### Precautions for use

- All chemicals should be considered as potentially hazardous. We therefore recommend that this product is handled only by those persons who have been trained in laboratory techniques and that it is used in accordance with the principles of good laboratory practice. Wear suitable protective clothing such as laboratory overalls, safety glasses, and gloves. Care should be taken to avoid contact with skin or eyes. In the case of contact with skin or eyes wash immediately with water. See material safety data sheet(s) and/or safety statement(s) for specific advice.
- Reagents are intended for research use only and are not for use in diagnostic or therapeutic procedures.
- Do not mix or substitute reagents with those from other lots or other sources.
- Do not use kit reagents beyond expiration date on label.
- Do not expose kit reagents to strong light during storage or incubation.
- Do not pipet by mouth.
- Do not eat or smoke in areas where kit reagents or samples are handled.
- Avoid contact of skin or mucous membranes with kit reagents or samples.
- Rubber or disposable latex gloves should be worn while handling kit reagents or samples.
- Avoid contact of substrate solution with oxidizing agents and metal.
- Avoid splashing or generation of aerosols.
- To avoid microbial contamination or cross-contamination of reagents or samples that may invalidate the test, use disposable pipette tips and/or pipettes.
- Use clean, dedicated reagent trays for dispensing the conjugate and substrate reagent.
- Exposure to acid inactivates the conjugate.
- Glass-distilled water or deionized water must be used for reagent preparation.
- Substrate solution must be at room temperature prior to use.
- Decontaminate and dispose samples and all potentially contaminated materials as if they could contain infectious agents. The preferred method of decontamination is autoclaving for a minimum of 1 hour at 121.5°C.
- Liquid wastes not containing acid and neutralized waste may be mixed with sodium hypochlorite in volumes such that the final mixture contains 1.0% sodium hypochlorite. Allow 30 minutes for effective decontamination. Liquid waste containing acid must be neutralized prior to the addition of sodium hypochlorite.

### Preparation of reagents

1. Buffer concentrates should be brought to room temperature and should be diluted before starting the test procedure.
2. If crystals have formed in the Buffer Concentrates, warm them gently until they have completely dissolved.

### Wash buffer (1x)

1. Pour entire contents (50 mL) of the Wash Buffer Concentrate (20x) into a clean 1000 mL graduated cylinder. Bring to final volume of 1000 mL with glass-distilled or deionized water.
2. Mix gently to avoid foaming.
3. Transfer to a clean wash bottle and store at 2°C to 25°C. Please note that Wash Buffer (1x) is stable for 30 days.
4. Wash Buffer may (1x) also be prepared as needed according to the following table:

Number of Strips	Wash Buffer Concentrate (20x) (mL)	Distilled Water (mL)
1–6	25	475
1–12	50	950

## Assay buffer (1x)

1. Pour the entire contents (5 mL) of the Assay Buffer Concentrate (20x) into a clean 100 mL graduated cylinder. Bring to final volume of 100 mL with distilled water. Mix gently to avoid foaming.
2. Store at 2°C to 8°C. Please note that the Assay Buffer (1x) is stable for 30 days.
3. Assay Buffer (1x) may also be prepared as needed according to the following table:

Number of Strips	Assay Buffer Concentrate (20x) (mL)	Distilled Water (mL)
1-6	2.5	47.5
1-12	5.0	95.0

## HRP-Conjugate

**Note:** The HRP-Conjugate should be used within 30 minutes after dilution.

Make a 1:60 dilution of the concentrated HRP-Conjugate solution with Assay Buffer (1x) in a clean plastic tube as needed according to the following table:

Number of Strips	HRP-Conjugate (mL)	Assay Buffer (1x) (mL)
1-6	0.05	2.95
1-12	0.10	5.90

## Human ICAM-1 standard

Standard dilutions can be prepared directly on the microwell plate (see "Test protocol" on page 3) or alternatively in tubes (see "External standard dilution" on page 3).

### External standard dilution

1. Label 4 tubes, one for each standard point: S2, S3, S4, S5.
2. Then prepare 1:2 serial dilutions for the standard curve as follows: Pipette 225 µL of Sample Diluent into tubes S2 – S5.
3. Pipette 225 µL of undiluted standard (serves as the highest standard S1, concentration of standard 1 = 10 ng/mL) into the first tube, labeled S2, and mix (concentration of standard 2 = 5 ng/mL).
4. Pipette 225 µL of this dilution into the second tube, labeled S3, and mix thoroughly before the next transfer.
5. Repeat serial dilutions 2 more times thus creating the points of the standard curve (see Figure 5).

Sample Diluent serves as blank.

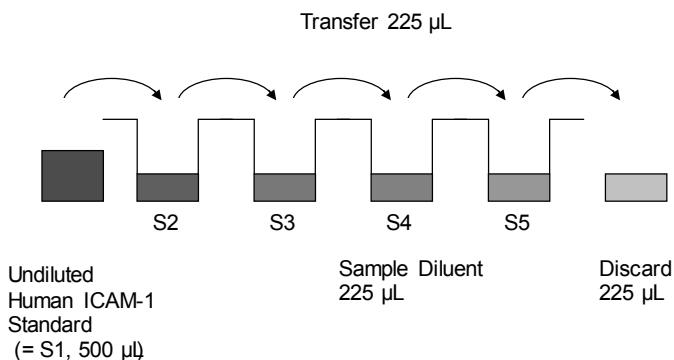


Fig. 5 Dilute standards - tubes

## Test protocol

1. Predilute your samples before starting with the test procedure. Dilute serum and plasma samples 1:100 with Sample Diluent according to the following scheme:  
Dilution 1: 10 µL sample + 90 µL Sample Diluent  
Dilution 2: 50 µL of dilution 1 + 450 µL Sample Diluent  
Spontaneous urine samples are applied undiluted.
2. Determine the number of microwell strips required to test the desired number of samples plus appropriate number of wells needed for running blanks and standards. Each sample, standard, blank and optional control sample should be assayed in duplicate. Remove extra microwell strips from holder and store in foil bag with the desiccant provided at 2°C to 8°C sealed tightly.
3. Wash the microwell strips twice with approximately 400 µL Wash Buffer per well with thorough aspiration of microwell contents between washes. Allow the Wash Buffer to sit in the wells for about 10 – 15 seconds before aspiration. Take care not to scratch the surface of the microwells.

After the last wash step, empty wells and tap microwell strips on absorbent pad or paper towel to remove excess Wash Buffer. Use the microwell strips immediately after washing. Alternatively microwell strips can be placed upside down on a wet absorbent paper for not longer than 15 minutes. Do not allow wells to dry.

4. Standard dilution on the microwell plate (Alternatively the standard dilution can be prepared in tubes - see "External standard dilution" on page 3):

Add 100 µL of Sample Diluent in duplicate to standard wells B1/2-E1/2, leaving A1/2 empty. Pipette 200 µL of undiluted standard (concentration = 10.00 ng/mL) in duplicate into well A1 and A2 (see Table 1). Transfer 100 µL to wells B1 and B2. Mix the contents of wells B1 and B2 by repeated aspiration and ejection, and transfer 100 µL to wells C1 and C2, respectively (see Figure 6). Take care not to scratch the inner surface of the microwells. Continue this procedure 2 times, creating two rows of human ICAM-1 standard dilutions ranging from 10.00 to 0.63 ng/mL. Discard 100 µL of the contents from the last microwells (E1, E2) used.

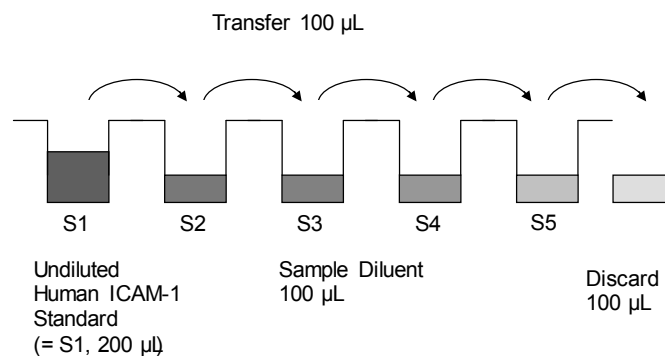


Fig. 6 Dilute standards - microwell plate

**Table 1** Example of the arrangement of blanks, standards and samples in the microwell strips.

	1	2	3	4
A	Standard 1 10.00 ng/mL	Standard 1 10.00 ng/mL	Sample 3	Sample 3
B	Standard 2 5.00 ng/mL	Standard 2 5.00 ng/mL	Sample 4	Sample 4
C	Standard 3 2.50 ng/mL	Standard 3 2.50 ng/mL	Sample 5	Sample 5
D	Standard 4 1.25 ng/mL	Standard 4 1.25 ng/mL	Sample 6	Sample 6
E	Standard 5 0.63 ng/mL	Standard 5 0.63 ng/mL	Sample 7	Sample 7
F	Blank	Blank	Sample 8	Sample 8
G	Sample 1	Sample 1	Sample 9	Sample 9
H	Sample 2	Sample 2	Sample 10	Sample 10

In case of an external standard dilution (see “External standard dilution” on page 3), pipette 100 µL of these standard dilutions (S1 – S5) in the standard wells according to Table 1.

- Add 100 µL of Sample Diluent in duplicate to the blank wells.
- Add 100 µL of each 1:100 prediluted sample in duplicate to the sample wells.
- Prepare HRP-Conjugate (see “HRP-Conjugate” on page 3).
- Add 50 µL of HRP-Conjugate to all wells.
- Cover with an adhesive film and incubate at room temperature (18°C to 25°C) for 2 hours on a microplate shaker.
- Remove adhesive film and empty wells. Wash microwell strips 3 times according to point 3. of the test protocol. Proceed immediately to the next step.
- Pipette 100 µL of TMB Substrate Solution to all wells.
- Incubate the microwell strips at room temperature (18° to 25°C) for about 10 minutes. Avoid direct exposure to intense light.

The color development on the plate should be monitored and the substrate reaction stopped (see next point of this protocol) before positive wells are no longer properly recordable. Determination of the ideal time period for color development has to be done individually for each assay.

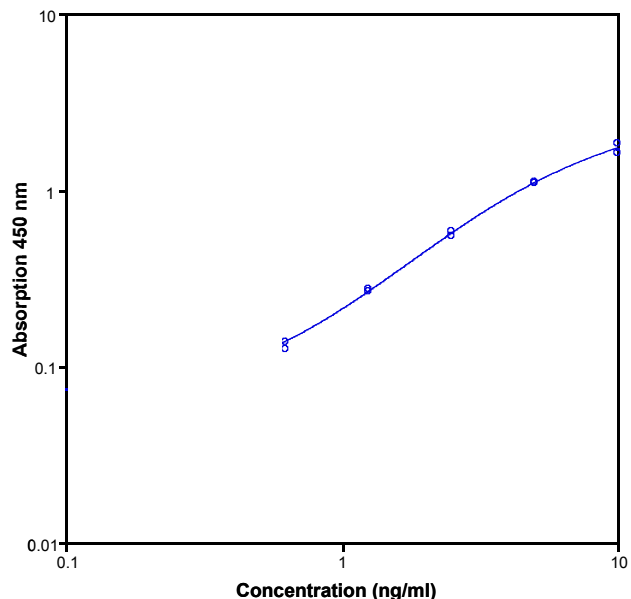
It is recommended to add the stop solution when the highest standard has developed a dark blue color. Alternatively the color development can be monitored by the ELISA reader at 620 nm. The substrate reaction should be stopped as soon as Standard 1 has reached an OD of 0.9 – 0.95.

- Stop the enzyme reaction by quickly pipetting 100 µL of Stop Solution into each well. It is important that the Stop Solution is spread quickly and uniformly throughout the microwells to completely inactivate the enzyme. Results must be read immediately after the Stop Solution is added or within one hour if the microwell strips are stored at 2°C to 8°C in the dark.
- Read absorbance of each microwell on a spectro-photometer using 450 nm as the primary wave length (optionally 620 nm as the reference wave length; 610 nm to 650 nm is acceptable). Blank the plate reader according to the manufacturer’s instructions by using the blank wells. Determine the absorbance of both the samples and the standards.

**Note:** In case of incubation without shaking the obtained O.D. values may be lower than indicated below. Nevertheless the results are still valid.

## Calculation of results

- Calculate the average absorbance values for each set of duplicate standards and samples. Duplicates should be within 20% of the mean value.
- Create a standard curve by plotting the mean absorbance for each standard concentration on the ordinate against the human ICAM-1 concentration on the abscissa. Draw a best fit curve through the points of the graph (a 5-parameter curve fit is recommended).
- To determine the concentration of circulating human ICAM-1 for each sample, first find the mean absorbance value on the ordinate and extend a horizontal line to the standard curve. At the point of intersection, extend a vertical line to the abscissa and read the corresponding human ICAM-1 concentration.
- If instructions in this protocol have been followed, serum and plasma samples have been prediluted 1:100 and the concentration read from the standard curve must be multiplied by the dilution factor (x 100).
- Calculation of samples with a concentration exceeding standard 1 may result in incorrect, low human ICAM-1 levels. Such samples require further external predilution according to expected human ICAM-1 values with Sample Diluent in order to precisely quantitate the actual human ICAM-1 level.
- It is suggested that each testing facility establishes a control sample of known human ICAM-1 concentration and runs this additional control with each assay. If the values obtained are not within the expected range of the control, the assay results may be invalid.
- A representative standard curve is shown in Figure 7. This curve cannot be used to derive test results. Each laboratory must prepare a standard curve for each group of microwell strips assayed.



**Fig. 7** Representative standard curve for human ICAM-1 ELISA (extra sensitive). Human ICAM-1 was diluted in serial 2-fold steps in Sample Diluent. Do not use this standard curve to derive test results. A standard curve must be run for each group of microwell strips assayed.

**Table 2** Typical data using the human ICAM-1 ELISA (extra sensitive)

Measuring wavelength: 450 nm

Reference wavelength: 620 nm

Standard	Human ICAM-1 Concentration (ng/mL)	O.D. at 450 nm	Mean O.D. at 450 nm	C.V. (%)
1	10.00	1.850 1.874	1.862	0.9
2	5.00	1.200 1.172	1.186	1.7
3	2.50	0.574 0.549	0.561	3.2
4	1.25	0.288 0.246	0.267	11.1
5	0.63	0.098 0.110	0.104	8.2
Blank	0.0	0.005 0.008	0.006	23.1

The OD values of the standard curve may vary according to the conditions of assay performance (e.g. operator, pipetting technique, washing technique or temperature effects). Furthermore shelf life of the kit may affect enzymatic activity and thus color intensity. Values measured are still valid.

## Limitations

- Since exact conditions may vary from assay to assay, a standard curve must be established for every run.
- Bacterial or fungal contamination of either screen samples or reagents or cross-contamination between reagents may cause erroneous results.
- Disposable pipette tips, flasks or glassware are preferred, reusable glassware must be washed and thoroughly rinsed of all detergents before use.
- Improper or insufficient washing at any stage of the procedure will result in either false positive or false negative results. Empty wells completely before dispensing fresh wash solution, fill with Wash Buffer as indicated for each wash cycle and do not allow wells to sit uncovered or dry for extended periods.
- The use of radioimmunotherapy has significantly increased the number of patients with human anti-mouse IgG antibodies (HAMA). HAMA may interfere with assays utilizing murine monoclonal antibodies leading to both false positive and false negative results.

Serum samples containing antibodies to murine immunoglobulins can still be analyzed in such assays when murine immunoglobulins (serum, ascitic fluid, or monoclonal antibodies of irrelevant specificity) are added to the sample.

## Performance characteristics

### Sensitivity

The limit of detection of human ICAM-1 defined as the analyte concentration resulting in an absorbance significantly higher than that of the dilution medium (mean plus two standard deviations) was determined to be 0.33 ng/mL (mean of six independent assays).

### Reproducibility

#### Intra-assay

Reproducibility within the assay was evaluated in 2 independent experiments. Each assay was carried out with six replicates of eight serum samples containing different concentrations of human ICAM-1. Two standard curves were run on each plate. Data below show the mean human ICAM-1 concentration and the coefficient of variation for

each sample (see Table 3). The calculated overall intra-assay coefficient of variation was 5.6%.

**Table 3** The mean human ICAM-1 concentration and the coefficient of variation for each sample

Sample	Experiment	Mean Human ICAM-1 Concentration (ng/mL)	Coefficient of Variation (%)
1	1	162.94	6.4
	2	142.98	9.0
2	1	205.95	8.5
	2	178.08	4.8
3	1	238.82	8.1
	2	240.28	4.2
4	1	330.70	6.3
	2	328.30	4.2
5	1	665.50	11.2
	2	645.34	2.9
6	1	906.14	8.6
	2	1004.68	2.4
7	1	981.12	6.6
	2	929.24	1.9
8	1	1217.00	3.3
	2	1119.80	1.2

#### Inter-assay

Assay to assay reproducibility within one laboratory was evaluated in two independent experiments. Each assay was carried out with 6 replicates of eight serum samples containing different concentrations of human ICAM-1. Two standard curves were run on each plate. Data below show the mean human ICAM-1 concentration and the coefficient of variation calculated on 12 determinations of each sample (see Table 4). The calculated overall inter-assay coefficient of variation was 7.8%.

**Table 4** The mean human ICAM-1 concentration and the coefficient of variation of each sample

Sample	Mean Human ICAM-1 Concentration (ng/mL)	Coefficient of Variation (%)
1	135.94	14.4
2	172.77	11.8
3	239.58	4.2
4	331.13	7.4
5	585.07	10.1
6	957.18	3.3
7	925.74	3.9
8	1087.58	7.7

### Spike recovery

The spike recovery was evaluated by spiking 4 levels of human ICAM-1 into 3 serum samples. Recoveries were determined in 3 independent experiments with 4 replicates each. The amount of endogenous human ICAM-1 in unspiked serum was subtracted from the spike values. The recovery ranged from 80–130% with an overall mean recovery of 103%.

## Dilution parallelism

Four serum samples with different levels of human ICAM-1 were analyzed at serial 2-fold dilutions with 4 replicates each. The recovery ranged from 83–121% with an overall recovery of 100%.

Sample	Dilution	Human ICAM-1 (ng/mL)		Recovery of expected concentration (%)
		Expected concentration	Observed concentration	
1	1:100	–	401.9	–
	1:200	201.0	203.0	101
	1:400	100.5	98.7	98
	1:800	50.3	48.2	96
2	1:100	–	260.9	–
	1:200	130.5	108.6	83
	1:400	65.2	58.1	89
	1:800	32.6	38.4	118
3	1:100	–	638.7	–
	1:200	319.4	349.7	110
	1:400	159.7	180.5	113
	1:800	79.8	96.5	120.9
4	1:100	–	177.6	–
	1:200	88.8	77.9	87.7
	1:400	44.4	37.3	84.0
	1:800	–	–	–

## Sample stability

### Freeze-Thaw stability

Aliquots of serum samples (spiked or unspiked) were stored at -20°C and thawed 5 times, and the human ICAM-1 levels determined. There was no significant loss of human ICAM-1 immunoreactivity detected by freezing and thawing.

### Storage stability

Aliquots of serum samples (spiked or unspiked) were stored at -20°C, 2°C to 8°C, room temperature, and at 37°C, and the human ICAM-1 level determined after 24, 48, and 96 hours. There was no significant loss of human ICAM-1 immunoreactivity detected during storage under above conditions.

## Comparison of serum and plasma

From 3 individuals, serum as well as EDTA, citrate and heparin plasma obtained at the same time point were evaluated. Human ICAM-1 levels were not significantly different and therefore all these blood preparations are suitable for human ICAM-1 determinations.

## Specificity

The interference of circulating factors of the immune system was evaluated by spiking these proteins at physiologically relevant concentrations into a human ICAM-1 positive serum. No cross-reactivity was detected with TNF-R (60 kDa), TNF-R (80 kDa), IL-8/NAP-1, TNF  $\alpha$ , TNF  $\beta$ , IFN  $\gamma$ , IFN  $\alpha$  2C, IFN  $\omega$ , IL-6, IL-2R, ELAM-1, and L-selectin.

## Expected values

Panels of 40 serum as well as EDTA, citrate, and heparin plasma samples from randomly selected apparently healthy donors (males and females) were tested for human ICAM-1. The levels measured may vary with the sample collection used.

Sample matrix	Number of samples evaluated	Range (ng/mL)	Mean (ng/mL)	Standard deviation (ng/mL)
Serum	40	52.7–1047.2	518.7	178.4
Plasma (EDTA)	40	325.8–1009.4	572.1	120.4
Plasma (citrate)	40	40.7–669.6	376.7	135.2
Plasma (heparin)	40	100.5–589.4	317.5	135.6

## Reagent preparation summary

### Wash buffer (1x)

Add Wash Buffer Concentrate 20x (50 mL) to 950 mL distilled water.

Number of Strips	Wash Buffer Concentrate (mL)	Distilled Water (mL)
1–6	25	475
1–12	50	950

### Assay buffer (1x)

Add Assay Buffer Concentrate 20x (5 mL) to 95 mL distilled water.

Number of Strips	Assay Buffer Concentrate (mL)	Distilled Water (mL)
1–6	2.5	47.5
1–12	5.0	95.0

### HRP-Conjugate

Make a 1:60 dilution of HRP-Conjugate in Assay Buffer (1x):

Number of Strips	HRP-Conjugate (mL)	Assay Buffer (1x) (mL)
1–6	0.05	2.95
1–12	0.10	5.90

## Test protocol summary

1. Predilute serum and plasma samples with Sample Diluent 1:100.
2. Determine the number of microwell strips required.
3. Wash microwell strips twice with Wash Buffer.
4. Standard dilution on the microwell plate: Add 100  $\mu$ L Sample Diluent, in duplicate, to all standard wells leaving the first wells empty. Pipette 200  $\mu$ L standard into the first wells and create standard dilutions by transferring 100  $\mu$ L from well to well. Discard 100  $\mu$ L from the last wells.  
Alternatively external standard dilution in tubes (see “External standard dilution” on page 3): Pipette 100  $\mu$ L of these standard dilutions in the microwell strips.
5. Add 100  $\mu$ L Sample Diluent, in duplicate, to the blank wells.
6. Add 100  $\mu$ L prediluted sample in duplicate, to designated sample wells.
7. Prepare HRP-Conjugate.
8. Add 50  $\mu$ L HRP-Conjugate to all wells.
9. Cover microwell strips and incubate 2 hours at room temperature (18°C to 25°C).
10. Empty and wash microwell strips 3 times with Wash Buffer.
11. Add 100  $\mu$ L of TMB Substrate Solution to all wells.
12. Incubate the microwell strips for about 10 minutes at room temperature (18°C to 25°C).
13. Add 100  $\mu$ L Stop Solution to all wells.
14. Blank microwell reader and measure color intensity at 450 nm.

**Note:** If instructions in this protocol have been followed, serum and plasma samples have been diluted 1:100 and the concentration read from the standard curve must be multiplied by the dilution factor (x 100).

## Customer and technical support

Visit [thermofisher.com/support](http://thermofisher.com/support) for the latest service and support information.

- Worldwide contact telephone numbers
- Product support information
  - Product FAQs
  - Software, patches, and updates
  - Training for many applications and instruments
- Order and web support
- Product documentation
  - User guides, manuals, and protocols
  - Certificates of Analysis

– Safety Data Sheets (SDSs; also known as MSDSs)

**Note:** For SDSs for reagents and chemicals from other manufacturers, contact the manufacturer.

## Limited product warranty

Life Technologies Corporation and/or its affiliate(s) warrant their products as set forth in the Life Technologies' General Terms and Conditions of Sale at [www.thermofisher.com/us/en/home/global/terms-and-conditions.html](http://www.thermofisher.com/us/en/home/global/terms-and-conditions.html). If you have any questions, please contact Life Technologies at [www.thermofisher.com/support](http://www.thermofisher.com/support).



Bender MedSystems GmbH | Campus Vienna Biocenter 2 | 1030 Vienna, Austria

For descriptions of symbols on product labels or product documents, go to [thermofisher.com/symbols-definition](http://thermofisher.com/symbols-definition).

The information in this guide is subject to change without notice.

**DISCLAIMER:** TO THE EXTENT ALLOWED BY LAW, THERMO FISHER SCIENTIFIC INC. AND/OR ITS AFFILIATE(S) WILL NOT BE LIABLE FOR SPECIAL, INCIDENTAL, INDIRECT, PUNITIVE, MULTIPLE, OR CONSEQUENTIAL DAMAGES IN CONNECTION WITH OR ARISING FROM THIS DOCUMENT, INCLUDING YOUR USE OF IT.

**Important Licensing Information:** These products may be covered by one or more Limited Use Label Licenses. By use of these products, you accept the terms and conditions of all applicable Limited Use Label Licenses.

©2019 Thermo Fisher Scientific Inc. All rights reserved. All trademarks are the property of Thermo Fisher Scientific and its subsidiaries unless otherwise specified. All other trademarks are the property of their respective owners.