

CD45R (B220) Monoclonal Antibody (RA3-6B2), APC, eBioscience™

Product Details	
Size	100 µg
Species Reactivity	Human, Mouse
Published Species	Fish, Mouse, Human
Host/Isotype	Rat / IgG2a, kappa
Recommended Isotype Control	Rat IgG2a kappa Isotype Control (eBR2a), APC, eBioscience™
Class	Monoclonal
Type	Antibody
Clone	RA3-6B2
Conjugate	APC
Form	Liquid
Concentration	0.2 mg/mL
Purification	Affinity chromatography
Storage buffer	PBS, pH 7.2, with 0.1% gelatin
Contains	0.09% sodium azide
Storage conditions	4° C, store in dark, DO NOT FREEZE!
RRID	AB_469395

Applications	Tested Dilution	Publications
Immunohistochemistry (IHC)	-	1 Publication
Immunohistochemistry (Frozen) (IHC (F))	-	6 Publications
Flow Cytometry (Flow)	0.25 µg/test	146 Publications
ELISA (ELISA)	-	1 Publication

Product Specific Information

Description: The RA3-6B2 monoclonal antibody reacts with exon A-restricted isoform of mouse CD45, a 220 kDa surface molecule. CD45R/B220 epitope is mainly expressed by the B cell lineage from early Pro-B to mature B cells. However, some activated T cells, lymphokine activated killer cells (LAK), NK cell progenitors in the bone marrow, and T cells of the lpr/lpr mutant mouse also express this antigen.

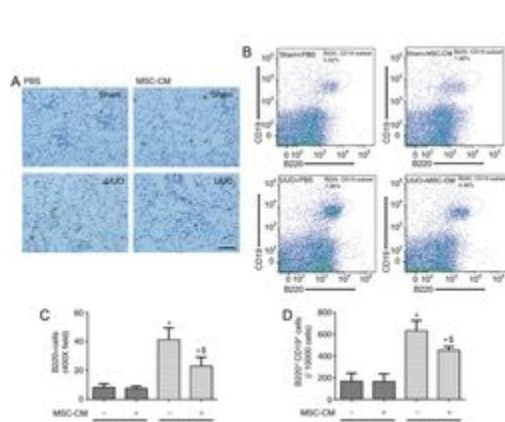
Applications Reported: This RA3-6B2 antibody has been reported for use in flow cytometric analysis.

Applications Tested: This RA3-6B2 antibody has been tested by flow cytometric analysis of mouse spleen cells. This can be used at less than or equal to 0.25 µg per test. A test is defined as the amount (µg) of antibody that will stain a cell sample in a final volume of 100 µL. Cell number should be determined empirically but can range from 10⁵ to 10⁸ cells/test. It is recommended that the antibody be carefully titrated for optimal performance in the assay of interest.

Excitation: 633-647 nm; Emission: 660 nm; Laser: Red Laser.

Filtration: 0.2 µm post-manufacturing filtered.

Advanced Verification Data

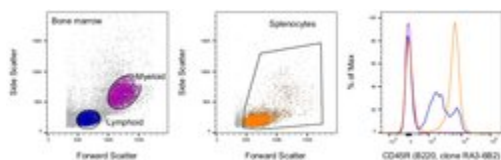


CD45R (B220) Antibody (17-0452-82)

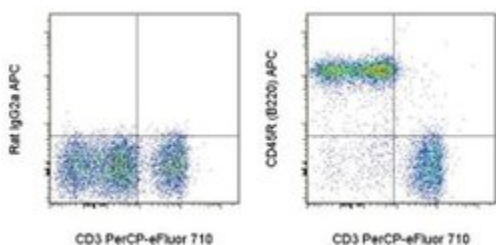
Figure 4. MSC-CM treatment alleviates mature B lymphocyte infiltration into the kidneys following UUO. (A) Representative images of Sham + PBS, Sham + MSC-CM, UUO + PBS and UUO + MSC-CM mice 3 days following surgery. Scale bar=50 µm. Data are presented as the mean +/- standard deviation (n=6-7). (B) Representative flow cytometry images of renal B220 + CD19 + B lymphocyte cytometry of Sham + PBS, Sham + MSC-CM, UUO + PBS and UUO + MSC-CM mice 3 days following surgery. (C) Quantitative analysis of B220 staining and (D) quantitative analysis of renal B220 + CD19 + B lymphocyte cytometry. Data are presented as the means +/- standard deviation (n=6). *P<0.05 vs. Sham + PBS group; \$P<0.05 vs. UUO + PBS group. MSC-CM, mesenchymal stem cell-conditioned media; Sham + PBS, sham-operated and PBS treated; Sham + MSC-CM, sham-operated and MSC-CM treated; UUO, unilateral ureteral obstruction; UUO + PBS, UUO model and PBS treated; UUO + MSC-CM, UUO model and MSC-CM treated. Cell treatment validation info.

CD45R (B220) Antibody (17-0452-82)

Staining of mouse splenocytes and bone marrow cells. As expected based on known relative expression patterns, CD45R (B220) clone RA3-6B2 stains subsets in both the splenocytes gate and the bone marrow lymphoid gate but not the bone marrow myeloid gate. Details: Balb/c bone marrow cells (left) and splenocytes (middle) were surface stained with CD45R (B220, clone RA3-6B2) followed by staining with 7-AAD. Viable bone marrow cells in the lymphoid (blue histogram) and myeloid (purple histogram) gates and viable splenocytes (orange histogram) were used for analysis. Relative expression validation info.



Product Images For CD45R (B220) Monoclonal Antibody (RA3-6B2), APC, eBioscience™



CD45R (B220) Antibody (17-0452-82) in Flow

Staining of C57Bl/6 splenocytes with Anti-Mouse CD3 PerCP-eFluor® 710 (Product # 46-0032-82) and 0.125 µg of Rat IgG2a K Isotype Control APC (Product # 17-4321-81) (left) or 0.125 µg of Anti-Human/Mouse CD45R (B220) APC (Product # 17-4321-81) (right). Cells in the lymphocyte gate were used for analysis.

View more figures on [thermofisher.com](https://www.thermofisher.com)

Immunohistochemistry (1)

Journal of immunology (Baltimore, Md. : 1950)

Silent development of memory progenitor B cells.

"17-0452 was used in Immunofluorescence to support a model of memory B cell development in which extensive affinity /specificity maturation can take place within a B cell clone under some circumstances."

Authors: Aviszus K,Zhang X,Wysocki LJ

Species
Mouse

Dilution
Not Cited

Year
2007

Immunohistochemistry (Frozen) (6)

Proceedings of the National Academy of Sciences of the United States of America

Bcl6 middle domain repressor function is required for T follicular helper cell differentiation and utilizes the corepressor MTA3.

"17-0452 was used in Immunohistochemistry to discover that Bcl6 middle domain mediated repression is important for control of CD4 T-cell fate and function."

Authors: Nance JP,Bélanger S,Johnston RJ,Hu JK,Takemori T,Crotty S

Species
Mouse

Dilution
Not Cited

Year
2015

Journal of immunology (Baltimore, Md. : 1950)

Relapsing-remitting central nervous system autoimmunity mediated by GFAP-specific CD8 T cells.

"17-0452 was used in Immunohistochemistry to investigate the mechanism by which CD8 T cells mediate relapsing-remitting inflammatory CNS autoimmunity."

Authors: Sasaki K,Bean A,Shah S,Schutten E,Huseby PG,Peters B,Shen ZT,Vanguri V,Liggitt D,Huseby ES

Species
Mouse

Dilution
Not Cited

Year
2014

[View more IHC \(F\) references on thermofisher.com](#)

Flow Cytometry (146)

Frontiers in immunology

Myeloid Cell CK2 Regulates Inflammation and Resistance to Bacterial Infection.

"Published figure using CD45R (B220) monoclonal antibody (Product # 17-0452-82) in Flow Cytometry"

Authors: Larson SR,Bortell N,Illies A,Crisler WJ,Matsuda JL,Lenz LL

Species
Not Applicable

Dilution
Not Cited

Year
2021

[View more Flow references on thermofisher.com](#)

More applications with references on thermofisher.com

ELISA (1)

For Research Use Only. Not for use in diagnostic procedures. Not for resale without express authorization. Products are warranted to operate or perform substantially in conformance with published Product specifications in effect at the time of sale, as set forth in the Production documentation, specifications and/or accompanying package inserts ("Documentation"). No claim of suitability for use in applications regulated by FDA is made. The warranty provided herein is valid only when used by properly trained individuals. Unless otherwise stated in the Documentation, this warranty is limited to one year from date of shipment when the Product is subjected to normal, proper and intended usage. This warranty does not extend to anyone other than the Buyer. Any model or sample furnished to Buyer is merely illustrative of the general type and quality of goods and does not represent that any Product will conform to such model or sample. NO OTHER WARRANTIES, EXPRESS OR IMPLIED, ARE GRANTED INCLUDING WITHOUT LIMITATION, IMPLIED WARRANTIES OF MERCHANTABILITY, FITNESS FOR ANY PARTICULAR PURPOSE, OR NON INFRINGEMENT. BUYER'S EXCLUSIVE REMEDY FOR NON-CONFORMING PRODUCTS DURING THE WARRANTY PERIOD IS LIMITED TO REPAIR, REPLACEMENT OF OR REFUND FOR THE NON-CONFORMING PRODUCT(S) AT SELLER'S SOLE OPTION. THERE IS NO OBLIGATION TO REPAIR, REPLACE OR REFUND FOR PRODUCTS AS THE RESULT OF (I) ACCIDENT, DISASTER OR EVENT OF FORCE MAJEURE, (II) MISUSE, FAULT OR NEGLIGENCE OF OR BY BUYER, (III) USE OF THE PRODUCTS IN A MANNER FOR WHICH THEY WERE NOT DESIGNED, OR (IV) IMPROPER STORAGE AND HANDLING OF THE PRODUCTS. Unless otherwise expressly stated on the Product or in the documentation accompanying the Product, the Product is intended for research only and is not to be used for any other purpose, including without limitation, unauthorized commercial uses, in vitro diagnostic uses, ex vivo or in vivo therapeutic uses, or any type of consumption by or application to human or animals.