

beta Actin Monoclonal Antibody (SP124)

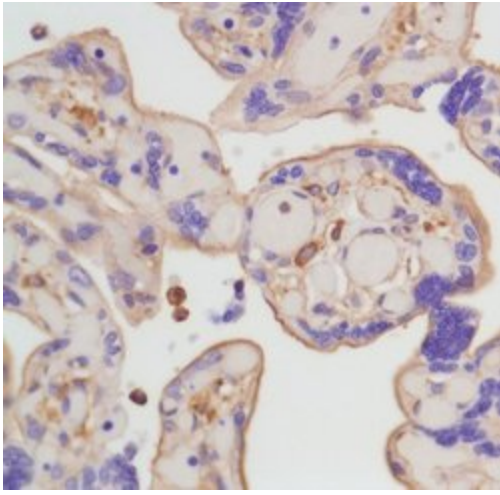
Product Details	
Size	100 µL
Species Reactivity	Human
Published Species	Rat
Host/Isotype	Rabbit / IgG
Class	Monoclonal
Type	Antibody
Clone	SP124
Conjugate	Unconjugated
Immunogen	Synthetic peptide near the N-terminus of human actin-beta protein.
Form	Liquid
Purification	Protein A/G
Storage buffer	PBS, pH 7.6, with 1% BSA
Contains	0.1% sodium azide
Storage conditions	-20° C, Avoid Freeze/Thaw Cycles
RRID	AB_2537929

Applications	Tested Dilution	Publications
Western Blot (WB)	1:200	1 Publication
Immunohistochemistry (Paraffin) (IHC (P))	1:200	-
Immunocytochemistry (ICC/IF)	Assay-dependent	-
Flow Cytometry (Flow)	1:200	-

Product Specific Information

Heat-mediated antigen retrieval is recommended prior to staining, using a 10mM citrate buffer, pH 6.0, for 10 minutes followed by cooling at room temperature for 20 min. Following antigen retrieval, incubate samples with primary antibody for 10 min at room temperature. A suggested positive control is placenta tissue.

Product Images For beta Actin Monoclonal Antibody (SP124)

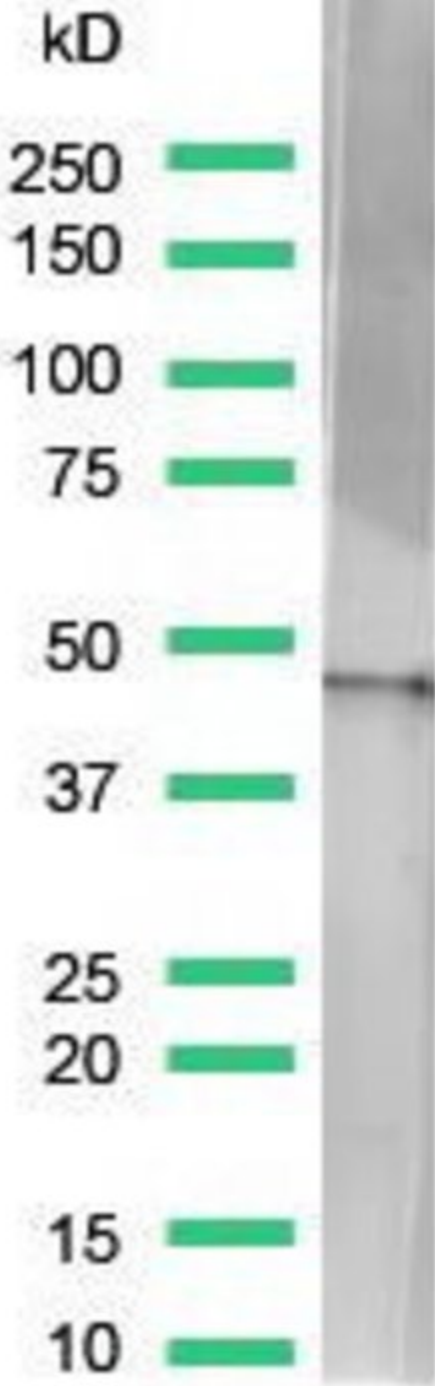


beta Actin Antibody (MA5-16410) in IHC

Immunohistochemical analysis of Actin-beta using anti-Actin-beta Monoclonal Antibody (Product # MA5-16410) in Placenta Tissue. The recommended dilution for this antibody in immunohistochemistry applications is 1:200.

beta Actin Antibody (MA5-16410) in WB

Western blot analysis of Human Placenta Cancer Tissue using anti-Actin-beta Monoclonal Antibody (Product # MA5-16410). The recommended dilution for this antibody in western blot applications is 1:25.



Western Blot (1)

Neurochemical research

Continual naringin treatment benefits the recovery of traumatic brain injury in rats through reducing oxidative and inflammatory alterations.

"MA5-16410 was used in western blot to study the role of reduced oxidative and inflammatory damage in the therapeutic effects of continuous naringin treatment in a rat model of traumatic brain injury"

Authors: Cui QJ,Wang LY,Wei ZX,Qu WS

Species
Rat

Dilution
1:20,000

Year
2014

For Research Use Only. Not for use in diagnostic procedures. Not for resale without express authorization. Products are warranted to operate or perform substantially in conformance with published Product specifications in effect at the time of sale, as set forth in the Production documentation, specifications and/or accompanying package inserts ("Documentation"). No claim of suitability for use in applications regulated by FDA is made. The warranty provided herein is valid only when used by properly trained individuals. Unless otherwise stated in the Documentation, this warranty is limited to one year from date of shipment when the Product is subjected to normal, proper and intended usage. This warranty does not extend to anyone other than the Buyer. Any model or sample furnished to Buyer is merely illustrative of the general type and quality of goods and does not represent that any Product will conform to such model or sample. NO OTHER WARRANTIES, EXPRESS OR IMPLIED, ARE GRANTED INCLUDING WITHOUT LIMITATION, IMPLIED WARRANTIES OF MERCHANTABILITY, FITNESS FOR ANY PARTICULAR PURPOSE, OR NON INFRINGEMENT. BUYER'S EXCLUSIVE REMEDY FOR NON-CONFORMING PRODUCTS DURING THE WARRANTY PERIOD IS LIMITED TO REPAIR, REPLACEMENT OF OR REFUND FOR THE NON-CONFORMING PRODUCT(S) AT SELLER'S SOLE OPTION. THERE IS NO OBLIGATION TO REPAIR, REPLACE OR REFUND FOR PRODUCTS AS THE RESULT OF (I) ACCIDENT, DISASTER OR EVENT OF FORCE MAJEURE, (II) MISUSE, FAULT OR NEGLIGENCE OF OR BY BUYER, (III) USE OF THE PRODUCTS IN A MANNER FOR WHICH THEY WERE NOT DESIGNED, OR (IV) IMPROPER STORAGE AND HANDLING OF THE PRODUCTS. Unless otherwise expressly stated on the Product or in the documentation accompanying the Product, the Product is intended for research only and is not to be used for any other purpose, including without limitation, unauthorized commercial uses, in vitro diagnostic uses, ex vivo or in vivo therapeutic uses, or any type of consumption by or application to human or animals.