

# CD107a (LAMP-1) Monoclonal Antibody (eBioH4A3), PE, eBioscience™

Product Details	
Size	100 Tests
Species Reactivity	Human
Published Species	Human, Rhesus monkey
Host/Isotype	Mouse / IgG1, kappa
Recommended Isotype Control	Mouse IgG1 kappa Isotype Control (P3.6.2.8.1), PE, eBioscience™
Class	Monoclonal
Type	Antibody
Clone	eBioH4A3
Conjugate	PE
Form	Liquid
Concentration	5 µL/Test
Purification	Affinity chromatography
Storage buffer	PBS, pH 7.2, with 0.1% gelatin, 0.2% BSA
Contains	0.09% sodium azide
Storage conditions	4° C, store in dark, DO NOT FREEZE!
RRID	AB_10853326

Applications	Tested Dilution	Publications
Immunocytochemistry (ICC/IF)	-	1 Publication
Flow Cytometry (Flow)	5 µL (0.125 µg)/test	13 Publications

## Product Specific Information

**Description:** The eBioH4A3 monoclonal antibody reacts with human CD107a, also known as lysosomal-associated membrane protein-1 (LAMP-1). CD107a is a highly glycosylated protein of approximately 110kDa. It is predominantly expressed intracellularly in the lysosomal/endosomal membrane in nearly all cells. CD107a is transiently expressed on the cell surface of degranulating cytolytic T cells, and is also upregulated on the surface of activated platelets and some cancer cells.

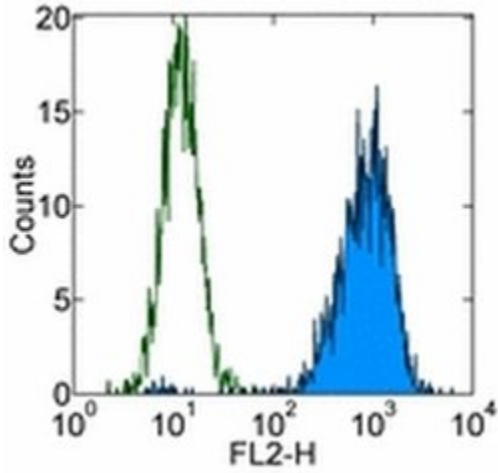
**Applications Reported:** This eBioH4A3 antibody has been reported for use in intracellular staining followed by flow cytometric analysis. It has also been reported for use in surface staining in a flow cytometric based degranulation assay.

**Applications Tested:** This eBioH4A3 antibody has been pre-titrated and tested by intracellular staining and flow cytometric analysis of Jurkat cells. This can be used at 5 µL (0.125 µg) per test. A test is defined as the amount (µg) of antibody that will stain a cell sample in a final volume of 100 µL. Cell number should be determined empirically but can range from 10<sup>5</sup> to 10<sup>8</sup> cells/test.

**Excitation:** 488-561 nm; **Emission:** 578 nm; **Laser:** Blue Laser, Green Laser, Yellow-Green Laser.

**Filtration:** 0.2 µm post-manufacturing filtered.

**Product Images For CD107a (LAMP-1) Monoclonal Antibody (eBioH4A3), PE, eBioscience™**



**CD107a (LAMP-1) Antibody (12-1079-42) in Flow**

Intracellular staining of Jurkat cells with Mouse IgG1 K Isotype Control PE (Product # 12-4714-81) (blue histogram) or Anti-Human CD107a (LAMP-1) PE (purple histogram). Total cells were used for analysis.

[View more figures on thermofisher.com](http://thermofisher.com)

## Immunocytochemistry (1)

### Nature immunology

#### Self-reactive IgE exacerbates interferon responses associated with autoimmunity.

"12-1079 was used in Immunofluorescence to investigate the role of IgE in systemic lupus erythematosus."

Authors: Henault J,Riggs JM,Karnell JL,Liarski VM,Li J,Shirinian L,Xu L,Casey KA,Smith MA,Khatry DB,Izhak L,Clarke L,Herbst R,Ettinger R,Petri M,Clark MR,Mustelin T,Kolbeck R,Sanjuan MA

**Species**  
Human

**Dilution**  
Not Cited

**Year**  
2016

## Flow Cytometry (13)

### Oncoimmunology

#### T cells targeting NY-ESO-1 demonstrate efficacy against disseminated neuroblastoma.

"Published figure using CD107a (LAMP-1) monoclonal antibody (Product # 12-1079-42) in Flow Cytometry"

Authors: Singh N,Kulikovskaya I,Barrett DM,Binder-Scholl G,Jakobsen B,Martinez D,Pawel B,June CH,Kalos MD,Grupp SA

**Species**  
Not Applicable

**Dilution**  
Not Cited

**Year**  
2021

### PLoS pathogens

#### HLA-B\*27:05 alters immunodominance hierarchy of universal influenza-specific CD8+ T cells.

"Published figure using CD107a (LAMP-1) monoclonal antibody (Product # 12-1079-42) in Flow Cytometry"

Authors: Sant S,Quiñones-Parra SM,Koutsakos M,Grant EJ,Loudovaris T,Mannering SI,Crowe J,van de Sandt CE,Rimmelzwaan GF,Rossjohn J,Gras S,Loh L,Nguyen THO,Kedzierska K

**Species**  
Not Applicable

**Dilution**  
Not Cited

**Year**  
2020

[View more Flow references on thermofisher.com](#)

## More applications with references on thermofisher.com

For Research Use Only. Not for use in diagnostic procedures. Not for resale without express authorization. Products are warranted to operate or perform substantially in conformance with published Product specifications in effect at the time of sale, as set forth in the Production documentation, specifications and/or accompanying package inserts ("Documentation"). No claim of suitability for use in applications regulated by FDA is made. The warranty provided herein is valid only when used by properly trained individuals. Unless otherwise stated in the Documentation, this warranty is limited to one year from date of shipment when the Product is subjected to normal, proper and intended usage. This warranty does not extend to anyone other than the Buyer. Any model or sample furnished to Buyer is merely illustrative of the general type and quality of goods and does not represent that any Product will conform to such model or sample. NO OTHER WARRANTIES, EXPRESS OR IMPLIED, ARE GRANTED INCLUDING WITHOUT LIMITATION, IMPLIED WARRANTIES OF MERCHANTABILITY, FITNESS FOR ANY PARTICULAR PURPOSE, OR NON INFRINGEMENT. BUYER'S EXCLUSIVE REMEDY FOR NON-CONFORMING PRODUCTS DURING THE WARRANTY PERIOD IS LIMITED TO REPAIR, REPLACEMENT OF OR REFUND FOR THE NON-CONFORMING PRODUCT(S) AT SELLER'S SOLE OPTION. THERE IS NO OBLIGATION TO REPAIR, REPLACE OR REFUND FOR PRODUCTS AS THE RESULT OF (I) ACCIDENT, DISASTER OR EVENT OF FORCE MAJEURE, (II) MISUSE, FAULT OR NEGLIGENCE OF OR BY BUYER, (III) USE OF THE PRODUCTS IN A MANNER FOR WHICH THEY WERE NOT DESIGNED, OR (IV) IMPROPER STORAGE AND HANDLING OF THE PRODUCTS. Unless otherwise expressly stated on the Product or in the documentation accompanying the Product, the Product is intended for research only and is not to be used for any other purpose, including without limitation, unauthorized commercial uses, in vitro diagnostic uses, ex vivo or in vivo therapeutic uses, or any type of consumption by or application to human or animals.