

CD4/CD25 Antibody Cocktail, FITC, PE, eBioscience™

| Product Details | |
|--------------------|-------------------------------------|
| Size | 25 Tests |
| Species Reactivity | Human |
| Host/Isotype | Mouse / IgG1, kappa |
| Class | Cocktail |
| Type | Antibody |
| Clone | RPA-T4, BC96 |
| Conjugate | FITC , PE |
| Form | Liquid |
| Concentration | 20 µL/Test |
| Purification | Affinity chromatography |
| Storage buffer | PBS, pH 7.2, with 0.2% BSA |
| Contains | 0.09% sodium azide |
| Storage conditions | 4° C, store in dark, DO NOT FREEZE! |
| RRID | AB_494063 |

| Applications | Tested Dilution | Publications |
|-----------------------|-----------------|--------------|
| Flow Cytometry (Flow) | 20 µL/test | - |

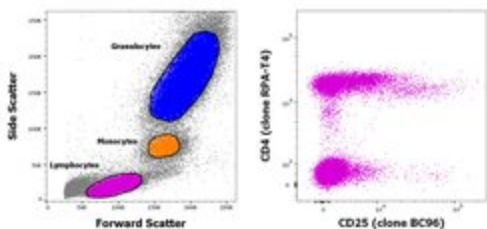
Product Specific Information

Description: This product consists of two fluorochrome-conjugated monoclonal antibodies to identify CD4+CD25+ human peripheral blood cells. The RPA-T4 monoclonal antibody (mouse IgG1, kappa) reacts with human CD4, a 59 kDa cell surface receptor that is expressed by a majority of thymocytes, a subpopulation of mature T cells (T helper cells) and at low levels on monocytes. The BC96 monoclonal antibody (mouse IgG1, kappa) reacts with human CD25, the 55 kDa interleukin-2 receptor alpha chain (IL-2Ralpha). This cocktail of RPA-T4 and BC96 can be used for the flow cytometric detection of human regulatory T cells, which also express Foxp3.

Applications Reported: This product has been reported for use in flow cytometric analysis.

Applications Tested: This cocktail has been pre-titrated and tested by flow cytometric analysis of normal human peripheral blood cells. This can be used at 20 µL per test (containing 1 µg of Anti-Human CD4 (RPA-T4) FITC and 0.125 µg of Anti-Human CD25 (BC96) PE). A test is defined as the amount (µg) of antibody that will stain a cell sample in a final volume of 100 µL. Cell number should be determined empirically but can range from 10⁵ to 10⁸ cells/test.

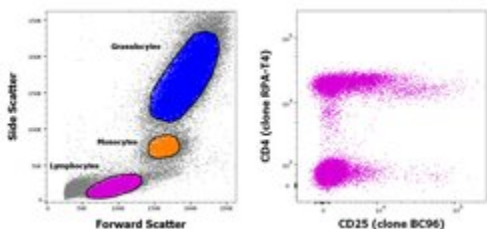
Advanced Verification Data



CD4/CD25 Antibody (22-8425-71)

Staining of human peripheral blood mononuclear cells with CD45 Pacific Blue and CD4/CD25 FITC/PE cocktail. As expected based on known relative expression patterns, CD4 clone RPA-T4 and CD25 clone BC96 stains a subset of lymphocytes, respectively. Relative expression validation info.

Product Images For CD4/CD25 Antibody Cocktail, FITC, PE, eBioscience™



CD4/CD25 Antibody (22-8425-71) in Flow

Staining of human peripheral blood mononuclear cells with CD45 Pacific Blue and CD4/CD25 FITC/PE cocktail. As expected based on known relative expression patterns, CD4 clone RPA-T4 and CD25 clone BC96 stains a subset of lymphocytes, respectively.

For Research Use Only. Not for use in diagnostic procedures. Not for resale without express authorization. Products are warranted to operate or perform substantially in conformance with published Product specifications in effect at the time of sale, as set forth in the Production documentation, specifications and/or accompanying package inserts ("Documentation"). No claim of suitability for use in applications regulated by FDA is made. The warranty provided herein is valid only when used by properly trained individuals. Unless otherwise stated in the Documentation, this warranty is limited to one year from date of shipment when the Product is subjected to normal, proper and intended usage. This warranty does not extend to anyone other than the Buyer. Any model or sample furnished to Buyer is merely illustrative of the general type and quality of goods and does not represent that any Product will conform to such model or sample. NO OTHER WARRANTIES, EXPRESS OR IMPLIED, ARE GRANTED INCLUDING WITHOUT LIMITATION, IMPLIED WARRANTIES OF MERCHANTABILITY, FITNESS FOR ANY PARTICULAR PURPOSE, OR NON INFRINGEMENT. BUYER'S EXCLUSIVE REMEDY FOR NON-CONFORMING PRODUCTS DURING THE WARRANTY PERIOD IS LIMITED TO REPAIR, REPLACEMENT OF OR REFUND FOR THE NON-CONFORMING PRODUCT(S) AT SELLER'S SOLE OPTION. THERE IS NO OBLIGATION TO REPAIR, REPLACE OR REFUND FOR PRODUCTS AS THE RESULT OF (I) ACCIDENT, DISASTER OR EVENT OF FORCE MAJEURE, (II) MISUSE, FAULT OR NEGLIGENCE OF OR BY BUYER, (III) USE OF THE PRODUCTS IN A MANNER FOR WHICH THEY WERE NOT DESIGNED, OR (IV) IMPROPER STORAGE AND HANDLING OF THE PRODUCTS. Unless otherwise expressly stated on the Product or in the documentation accompanying the Product, the Product is intended for research only and is not to be used for any other purpose, including without limitation, unauthorized commercial uses, in vitro diagnostic uses, ex vivo or in vivo therapeutic uses, or any type of consumption by or application to human or animals.