

# Mouse IgG1 kappa Isotype Control (P3.6.2.8.1), FITC, eBioscience™

Product Details	
Size	50 µg
Host/Isotype	Mouse / IgG1, kappa
Class	Control
Type	Isotype Control
Clone	P3.6.2.8.1
Conjugate	FITC
Form	Liquid
Concentration	0.5 mg/mL
Purification	Affinity chromatography
Storage buffer	PBS, pH 7.2, with 0.1% gelatin
Contains	0.09% sodium azide
Storage conditions	4° C, store in dark, DO NOT FREEZE!
RRID	AB_470021

Applications	Tested Dilution	Publications
Immunohistochemistry (IHC)	Assay-Dependent	-
Immunocytochemistry (ICC/IF)	Assay-Dependent	-
Flow Cytometry (Flow)	Assay-Dependent	-
Control (Ctrl)	Assay-Dependent	-

## Product Specific Information

Description: The monoclonal mouse IgG1 K immunoglobulin is useful as an isotype control.

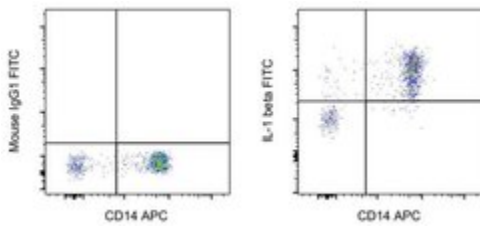
Applications Reported: FITC Mouse IgG1 K Isotype Control has been reported for use in immunocytochemistry, immunohistochemistry, and flow cytometric analysis.

Applications Tested: This Mouse IgG1 K Isotype Control can be used at the same concentration as the experimental antibody.

Excitation: 488 nm; Emission: 520 nm; Laser: Blue Laser.

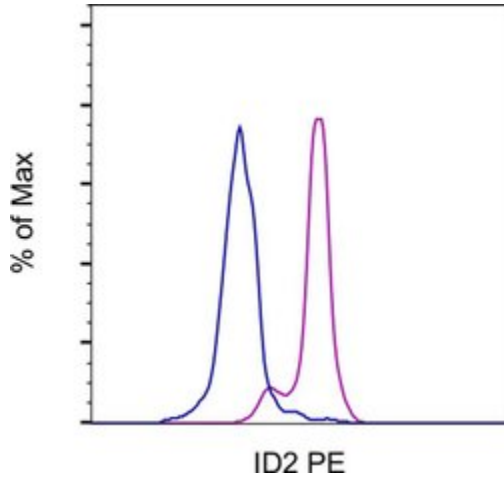
Filtration: 0.2 µm post-manufacturing filtered.

## Product Images For Mouse IgG1 kappa Isotype Control (P3.6.2.8.1), FITC, eBioscience™



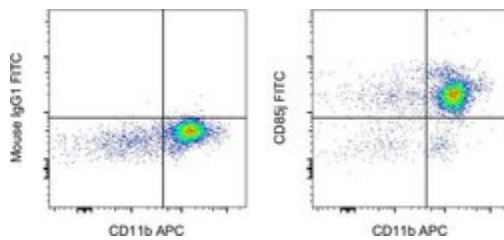
### Mouse IgG1 kappa Isotype Control (11-4714-81) in Flow

Normal human peripheral blood cells were stimulated for 4 hours with LPS (Product # 00-4976-03) in the presence of Brefeldin A (Product # 00-4506-51). Cells were then surface stained with CD14 Monoclonal Antibody, APC (Product # 17-0149-42), followed by intracellular staining using the Intracellular Fixation & Permeabilization Buffer Set (Product # 88-8824-00) and protocol, with and Mouse IgG1 kappa Isotype Control, FITC (Product # 11-4714-82) (left) or CRM56 Monoclonal Antibody, FITC (right). Cells in the monocyte gate were used for analysis.



### Mouse IgG1 kappa Isotype Control (11-4714-81) in Flow

C57BL/6 mouse splenocytes were stained intracellularly, using the Foxp3 /Transcription Factor Staining Buffer Set (Product # 00-5523-00) and protocol, with 1.0 µg of Mouse IgG1 kappa Isotype Control, PE (Product # 11-4714-82) (blue histogram) or 1.0 µg of ID2 Monoclonal Antibody, PE (purple histogram). Splenocytes within the lymphocyte gate positive for NK1.1 Monoclonal Antibody, APC (Product # 17-5941-82) and CD49b Monoclonal Antibody, APC (Product # 17-5971-82) were used for analysis.



### Mouse IgG1 kappa Isotype Control (11-4714-81) in Flow

Normal human peripheral blood cells were stained with CD11b Monoclonal Antibody, APC (Product # 17-0118-42) and Mouse IgG1 kappa Isotype Control, FITC (Product # 11-4714-82) (left) or CD85j Monoclonal Antibody, FITC (right). Cells in the monocyte gate were used for analysis.

[View more figures on thermofisher.com](http://thermofisher.com)

## 28 References

The mitochondrial iron transporter ABCB7 is required for B cell development, proliferation, and class switch recombination in mice. *Elife* (2021)

Characterization of mRNA Profiles of Exosomes from Diverse Forms of M2 Macrophages. *Biomed Res Int* (2020)

During *Aspergillus* Infection, Monocyte-Derived DCs, Neutrophils, and Plasmacytoid DCs Enhance Innate Immune Defense through CXCR3-Dependent Crosstalk. *Cell Host Microbe* (2020)

Application of the chemokine-chemokine receptor axis increases the tumor-targeted migration ability of cytokine-induced killer cells in patients with colorectal cancer. *Oncol Lett* (2020)

Myogenic Progenitor Cell Lineage Specification by CRISPR/Cas9-Based Transcriptional Activators. *Stem Cell Reports* (2020)

For Research Use Only. Not for use in diagnostic procedures. Not for resale without express authorization. Products are warranted to operate or perform substantially in conformance with published Product specifications in effect at the time of sale, as set forth in the Production documentation, specifications and/or accompanying package inserts ("Documentation"). No claim of suitability for use in applications regulated by FDA is made. The warranty provided herein is valid only when used by properly trained individuals. Unless otherwise stated in the Documentation, this warranty is limited to one year from date of shipment when the Product is subjected to normal, proper and intended usage. This warranty does not extend to anyone other than the Buyer. Any model or sample furnished to Buyer is merely illustrative of the general type and quality of goods and does not represent that any Product will conform to such model or sample. NO OTHER WARRANTIES, EXPRESS OR IMPLIED, ARE GRANTED INCLUDING WITHOUT LIMITATION, IMPLIED WARRANTIES OF MERCHANTABILITY, FITNESS FOR ANY PARTICULAR PURPOSE, OR NON INFRINGEMENT. BUYER'S EXCLUSIVE REMEDY FOR NON-CONFORMING PRODUCTS DURING THE WARRANTY PERIOD IS LIMITED TO REPAIR, REPLACEMENT OF OR REFUND FOR THE NON-CONFORMING PRODUCT(S) AT SELLER'S SOLE OPTION. THERE IS NO OBLIGATION TO REPAIR, REPLACE OR REFUND FOR PRODUCTS AS THE RESULT OF (I) ACCIDENT, DISASTER OR EVENT OF FORCE MAJEURE, (II) MISUSE, FAULT OR NEGLIGENCE OF OR BY BUYER, (III) USE OF THE PRODUCTS IN A MANNER FOR WHICH THEY WERE NOT DESIGNED, OR (IV) IMPROPER STORAGE AND HANDLING OF THE PRODUCTS. Unless otherwise expressly stated on the Product or in the documentation accompanying the Product, the Product is intended for research only and is not to be used for any other purpose, including without limitation, unauthorized commercial uses, in vitro diagnostic uses, ex vivo or in vivo therapeutic uses, or any type of consumption by or application to human or animals.