

# VIASURE PANEL

## Respiratory Panel I Real Time PCR Detection Kit

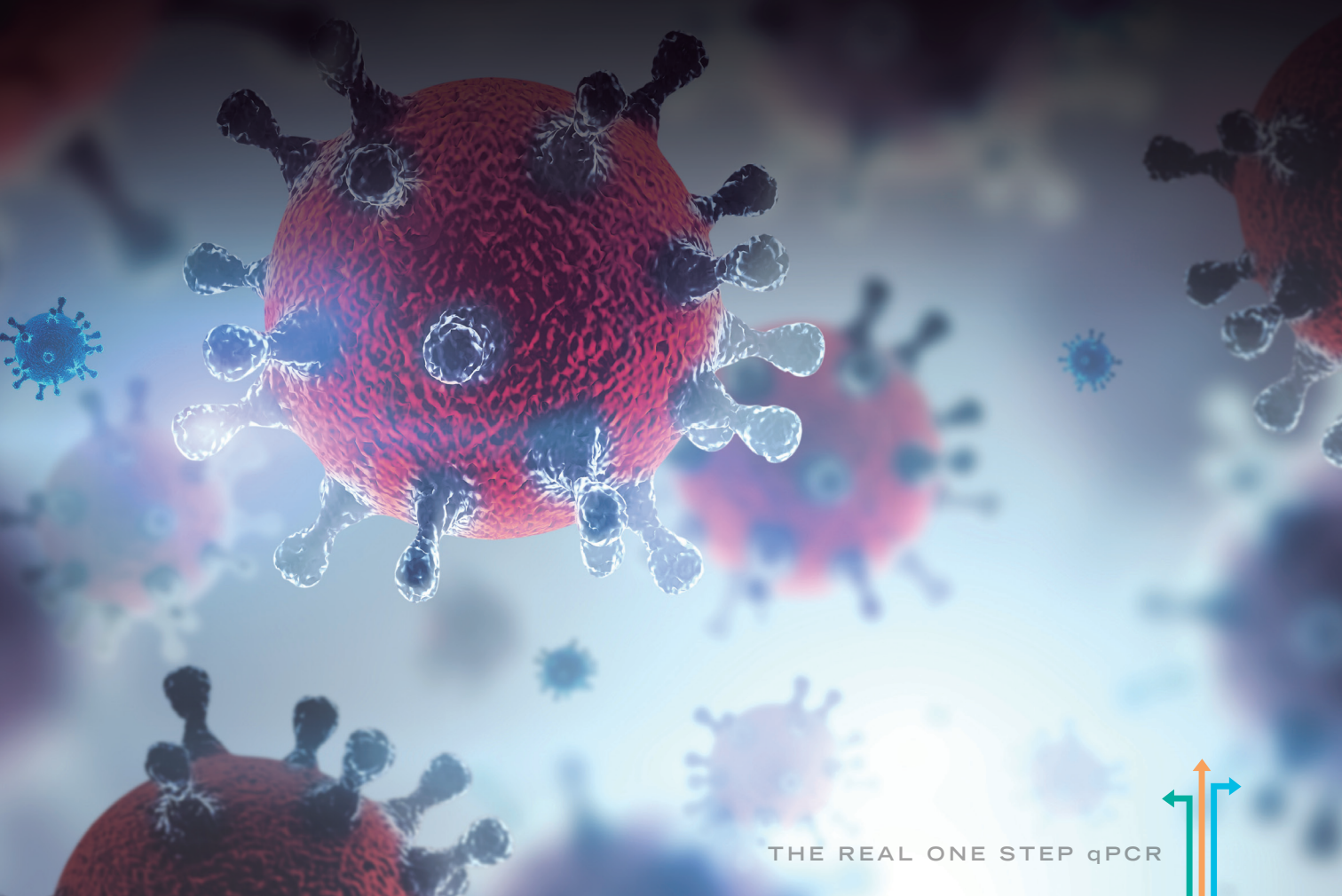
### Pathogen and product description

**V**IASURE Respiratory Panel I Real Time PCR Detection Kit is designed for the specific identification and differentiation of Influenza A (Flu A), Influenza B (Flu B) and/or Human Respiratory Syncytial Virus (RSV); human rhinovirus (HRV) and/or human enterovirus (HEV); human Adenovirus (AdV), Metapneumovirus (MPV) and/or Bocavirus (BoV); MERS Coronavirus 1 (MERS-CoV 1); MERS Coronavirus 2 (MERS-CoV 2); Coronavirus (CoV) 229E, NL63, OC43 and/or HKU1 strains; and / or Parainfluenza 1 (PIV-1), Parainfluenza 2 (PIV-2), Parainfluenza 3 (PIV-3) and/or Parainfluenza 4 (PIV-4) in respiratory samples from patients with signs and symptoms of respiratory infection.

This test is intended for use as an aid in the diagnosis of Flu A, Flu B and/or RSV; HRV and/or HEV; AdV, MPV and/or BoV; MERS-CoV; CoV 229E, NL63, OC43 and/or HKU1 strains and/or Parainfluenzas viruses in combination with clinical and epidemiological risk factors.

RNA/DNA are extracted from clinical specimens, multiplied using Real Time amplification and detected using specific primers and a fluorescent reporter dye probe for Flu A, Flu B and RSV; HRV and HEV; AdV, MPV and BoV; MERS-CoV; CoV 229E, NL63, OC43 and HKU1 strains and Parainfluenzas viruses.

More info through [www.certest.es](http://www.certest.es)



## Analytical sensitivity

VIASURE Respiratory Panel I Real Time PCR Detection Kit has a detection limit of  $\geq 10$  RNA/DNA copies per reaction for Flu A, Flu B and RSV; HRV and HEV; AdV, MPV and BoV; MERS-CoV; CoV 229E, NL63, HKU1 and OC43 and Parainfluenzas viruses.

## Components

Reagent/Material	Description	Colour	Quantity
Respiratory Panel I 8-well strips (Hyperplex reaction)	A mix of enzymes, primers-probes, buffer, dNTPs, and stabilizers in stabilized format	White	6/12 x 8-well strip
Rehydration Buffer	Solution to reconstitute the stabilized product	Blue	1 vial x 1,8 mL
Respiratory Panel I Positive Control	Non-infectious synthetic lyophilized cDNA/DNA	Red	1 vial
Negative Control	Non template control	Violet	1 vial x 1 mL
Water RNase/DNase free	RNase/DNase free water	White	1 vial x 1 mL
Tear-off 8-cap strips	Optical caps for sealing wells during thermal cycling	Transparent	6/12 x 8-cap strip

## Kit References

Reference	Description
VS-RP0112L	VIASURE Respiratory Panel I Real Time PCR Detection Kit 12 x 8-well strips, low profile
VS-RP0112H	VIASURE Respiratory Panel I Real Time PCR Detection Kit 12 x 8-well strips, high profile
VS-RP0113L	VIASURE Respiratory Panel I Real Time PCR Detection Kit 96-well plate, low profile
VS-RP0113H	VIASURE Respiratory Panel I Real Time PCR Detection Kit 96-well plate, high profile

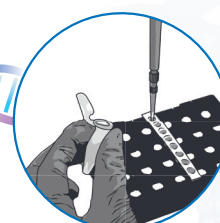
## Work Flow

One-step rehydration of wells and add your extracted DNA



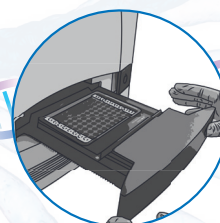
### STEP 1

Add 15  $\mu$ l of rehydration buffer into each well



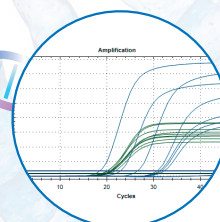
### STEP 2

Add 5  $\mu$ l of DNA sample / positive control / negative control



### STEP 3

Load the strips into the thermocycler and run the specified protocol



### STEP 4

Interpretate results



CERTEST BIOTEC, S.L.  
Pol. Industrial Río Gállego II, Calle J, Nº 1,  
50840, San Mateo de Gállego, Zaragoza (SPAIN)  
[www.cerTEST.es](http://www.cerTEST.es)

