

# Corning® Aspirator

Instruction Manual

CORNING



# Corning® Aspirator

## Table of Contents

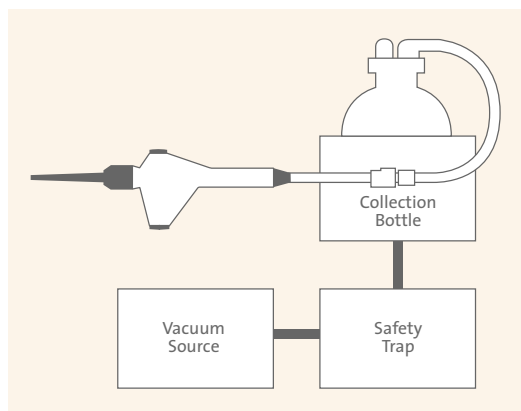
Introduction .....	1
Set Up .....	1
Proper Use .....	2
Cleaning and Service .....	2
Chemical Compatibility .....	3
Aspirator Attachment Options .....	4
Technical Information .....	5
Corning Incorporated Limited Warranty .....	5

## Introduction

The Corning® Aspirator (Corning Cat. No. 4930) is an aspiration device used for the removal of liquids from a variety of lab vessels. It is designed for use with an in-house vacuum system. The aspirator allows precise fingertip control of aspiration and presents a sensible alternative to the use of glass Pasteur pipets for supernatant disposal.

Designed for a comfortable fit in either hand, the aspirator can be used with a variety of collection devices. These include some glass Pasteur pipets, 2 mL plastic pipets (Corning Cat. Nos. 4020, 4021 or 4486) or 2 mL aspiration pipets (Corning Cat. No. 9186). Included with the aspirator is a single channel adapter for use with standard 1-200 µL disposable pipet tips (Corning Cat. Nos. 4804, 4860 or 4864). An 8-channel adapter for standard 1-200 µL disposable pipet tips is available for use with 96 well plates.

## Set Up



The aspirator is designed for use with a vacuum pump or an in-house vacuum system and a suitable collection vessel.

Connect the hose barb end of the aspirator hand-piece to flexible ¼" I.D thick wall (to prevent collapsing under vacuum) silicone rubber tubing and then connect the other end to a suitable collection

vessel such as a PYREXPLUS® 1L Filtering Flask (Corning Cat. No. 65340-1L). These heavy wall filter flasks have a protective PVC coating that helps prevent the glass from shattering. They are autoclavable (121°C) and resistant to thermal shock. The collection vessel is then connected by tubing to the vacuum source. When working with infectious materials, connecting a second vessel or 50 mm hydrophobic membrane disc filter (Corning Cat. No. 431227) as an in-line safety trap between the collection vessel and the vacuum source is strongly advised.

The aspirator is supplied with a soft-rubber grommet which holds both Pasteur and 2 mL plastic pipets. To use the single channel pipet-tip adapter, simply remove the orange fastening “sleeve” from the aspirator handpiece by turning one-quarter turn counter-clockwise, take out the rubber grommet and replace with the tip adapter, which has its own fastening sleeve. Tighten with a clockwise one-quarter turn.

To connect the 8-channel adapter for disposable tips, remove the fastening sleeve and rubber grommet and replace with the 8-channel adapter which has its own fastening sleeve.

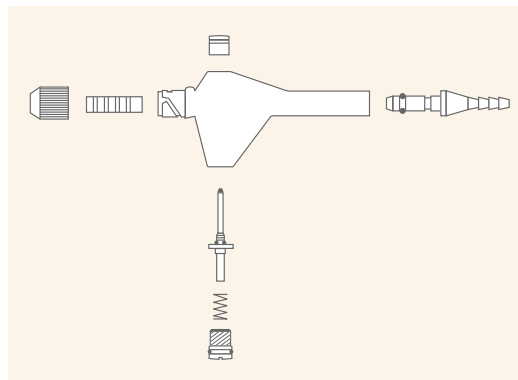
### Proper Use

Vacuum pressure through the aspirator is controlled by the pressure sensitive orange control button on the top of the handpiece.

Using the plastic screw opposite the control button, you can set a residual vacuum level to prevent waste liquids dripping from the tip or pipet. The aspirator is factory preset to allow a low level of constant suction; by turning the screw one full turn clockwise, the valve is shut and residual vacuum is stopped.

### Cleaning and Service

The aspirator is entirely autoclavable. When working with biohazardous material, sterilize the unit before disassembling for cleaning. Refer to the “exploded” diagram (above right) for disassembly.



To clean, immerse the pieces in mild laboratory detergent, but do not use abrasives, as a roughened surface may affect the smooth operation of the control valve. When working with salt-rich solutions, rinse out the aspirator handpiece with distilled water after use to avoid build-up of dried deposits.

Apply a thin coat of Molycoat (BG-87 Dow Corning) lubricant as needed to the control valve to keep the action smooth.

### Chemical Compatibility

Avoid prolonged contact (days or weeks) with:

- ▶ concentrated inorganic acids
- ▶ sodium hypochlorite
- ▶ methylene chloride
- ▶ concentrated aldehydes
- ▶ other halogenated hydrocarbons

Resistant to:

- ▶ DMSO
- ▶ ethanol/methanol
- ▶ dimethylformamide
- ▶ acetone

Notes:

- ▶ Flushing the aspirator with ethanol immediately after contact with organic solvents is the best safeguard in all cases.
- ▶ For O-ring replacement, use Viton® O-rings only.

## Aspirator Attachment Options

### Single Channel Adapter

The single channel adapter is included with the Corning Aspirator (Corning Cat. No. 4930) and is for use with standard 1-200 µL disposable pipet tips.



### 8-Channel Adapter

The 8-channel adapter (Corning Cat. No. 4931) fits standard disposable pipet tips and is available for use with 96 well plates. Sold separately.



## Technical Information

For technical assistance please call our Technical Information Center:

**1.800.492.1110**

Outside the U.S. call **1.978.442.2200**

## Corning Incorporated Limited Warranty

Corning Incorporated warrants this product against defects in material or workmanship for a period of one year after receipt by the Purchaser. CORNING INCORPORATED DISCLAIMS ALL OTHER WARRANTIES WHETHER EXPRESSED OR IMPLIED INCLUDING, WITHOUT LIMITATION, THE WARRANTY OF MERCHANTABILITY OR OF FITNESS FOR A PARTICULAR PURPOSE. Corning Incorporated's sole obligation shall be to repair or replace, at its option, any product or part thereof that proves defective in material or workmanship within the warranty period, provided the Purchaser notifies Corning Incorporated of any such defect. Corning Incorporated shall in no event be liable for consequential damages from economic loss or property damage sustained by any Purchaser from the use of Corning Incorporated products.

# CORNING

## Corning Incorporated

### *Life Sciences*

Tower 2, 4th Floor  
900 Chelmsford St.  
Lowell, MA 01851  
t 800.492.1110  
t 978.442.2200  
f 978.442.2476

[www.corning.com/lifesciences](http://www.corning.com/lifesciences)

## Worldwide Support Offices

### ASIA / PACIFIC

#### Australia

t 61 2-9416-0492  
f 61 2-9416-0493

#### China

t 86 21-3222-4666  
f 86 21-6288-1575

#### Hong Kong

t 852-2807-2723  
f 852-2807-2152

#### India

t 91-124-235 7850  
f 91-124-401 0207

#### Japan

t 81 (0) 3-3586 1996/1997  
f 81 (0) 3-3586 1291/1292

#### Korea

t 82 2-796-9500  
f 82 2-796-9300

#### Singapore

t 65 6733-6511  
f 65 6861-2913

#### Taiwan

t 886 2-2716-0338  
f 886 2-2716-0339

### EUROPE

#### France

t 0800 916 882  
f 0800 918 636

#### Germany

t 0800 101 1153  
f 0800 101 2427

#### The Netherlands

t 31 20 655 79 28  
f 31 20 659 76 73

#### United Kingdom

t 0800 376 8660  
f 0800 279 1117

#### All Other European Countries

t 31 (0) 20 659 60 51  
f 31 (0) 20 659 76 73

### LATIN AMERICA

#### Brasil

t (55-11) 3089-7419  
f (55-11) 3167-0700

#### Mexico

t (52-81) 8158-8400  
f (52-81) 8313-8589

CLS-GLAB-004-REV2

7/08

Printed in U.S.A.

© 2008 Corning Incorporated