

Mouse IgG2b kappa Isotype Control (eBMG2b), Alexa Fluor 532, eBioscience™

Product Details	
Size	50 µg
Host/Isotype	Mouse / IgG2b, kappa
Class	Control
Type	Isotype Control
Clone	eBMG2b
Conjugate	Alexa Fluor® 532
Form	Liquid
Concentration	0.2 mg/mL
Purification	Affinity chromatography
Storage buffer	PBS, pH 7.2
Contains	0.09% sodium azide
Storage conditions	4° C, store in dark, DO NOT FREEZE!
RRID	AB_2815279

Applications	Tested Dilution	Publications
Flow Cytometry (Flow)	Assay-Dependent	-
Control (Ctrl)	Assay-Dependent	-

Product Specific Information

Description: The monoclonal mouse IgG2b is useful as an isotype control immunoglobulin.

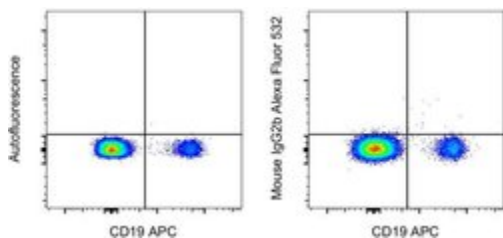
Applications Reported: This eBMG2b antibody has been reported for use in flow cytometric analysis.

Applications Tested: This eBMG2b antibody has been tested by flow cytometric analysis of mouse splenocytes and normal human peripheral blood cells. Use at the same concentration as the experimental antibody.

Alexa Fluor 532 is excited with the Green laser (532 nm) and emits at 561 nm. This cannot be used with the Yellow-Green laser (561 nm). We recommend using a 560/14 band pass filter. Please make sure that your instrument is capable of detecting this fluorochrome.

Excitation: 532 nm; **Emission:** 561 nm; **Laser:** Green Laser

Product Images For Mouse IgG2b kappa Isotype Control (eBMG2b), Alexa Fluor 532, eBioscience™



Mouse IgG2b kappa Isotype Control (58-4732-81) in Flow

Normal human peripheral blood cells were stained with CD19 Monoclonal Antibody, APC (Product # 17-0199-42) and staining buffer (autofluorescence) (left) or 0.125 μ g of Mouse IgG2b kappa Isotype Control, Alexa Fluor 532 (right). Cells in the lymphocyte gate were used for analysis.

For Research Use Only. Not for use in diagnostic procedures. Not for resale without express authorization. Products are warranted to operate or perform substantially in conformance with published Product specifications in effect at the time of sale, as set forth in the Production documentation, specifications and/or accompanying package inserts ("Documentation"). No claim of suitability for use in applications regulated by FDA is made. The warranty provided herein is valid only when used by properly trained individuals. Unless otherwise stated in the Documentation, this warranty is limited to one year from date of shipment when the Product is subjected to normal, proper and intended usage. This warranty does not extend to anyone other than the Buyer. Any model or sample furnished to Buyer is merely illustrative of the general type and quality of goods and does not represent that any Product will conform to such model or sample. NO OTHER WARRANTIES, EXPRESS OR IMPLIED, ARE GRANTED INCLUDING WITHOUT LIMITATION, IMPLIED WARRANTIES OF MERCHANTABILITY, FITNESS FOR ANY PARTICULAR PURPOSE, OR NON-INFRINGEMENT. BUYER'S EXCLUSIVE REMEDY FOR NON-CONFORMING PRODUCTS DURING THE WARRANTY PERIOD IS LIMITED TO REPAIR, REPLACEMENT OF OR REFUND FOR THE NON-CONFORMING PRODUCT(S) AT SELLER'S SOLE OPTION. THERE IS NO OBLIGATION TO REPAIR, REPLACE OR REFUND FOR PRODUCTS AS THE RESULT OF (I) ACCIDENT, DISASTER OR EVENT OF FORCE MAJEURE, (II) MISUSE, FAULT OR NEGLIGENCE OF OR BY BUYER, (III) USE OF THE PRODUCTS IN A MANNER FOR WHICH THEY WERE NOT DESIGNED, OR (IV) IMPROPER STORAGE AND HANDLING OF THE PRODUCTS. Unless otherwise expressly stated on the Product or in the documentation accompanying the Product, the Product is intended for research only and is not to be used for any other purpose, including without limitation, unauthorized commercial uses, in vitro diagnostic uses, ex vivo or in vivo therapeutic uses, or any type of consumption by or application to human or animals.