

CD45RO Monoclonal Antibody (UCHL1), PE-eFluor™ 610, eBioscience™

Product Details	
Size	100 Tests
Species Reactivity	Human
Host/Isotype	Mouse / IgG2a, kappa
Recommended Isotype Control	Mouse IgG2a kappa Isotype Control (eBM2a), PE-eFluor™ 610, eBioscience™
Class	Monoclonal
Type	Antibody
Clone	UCHL1
Conjugate	PE-eFluor™ 610
Form	Liquid
Concentration	5 µL/Test
Purification	Affinity chromatography
Storage buffer	PBS, pH 7.2, with 0.2% BSA
Contains	0.09% sodium azide
Storage conditions	4° C, store in dark, DO NOT FREEZE!
RRID	AB_2815300

Applications	Tested Dilution	Publications
Flow Cytometry (Flow)	5 µL (0.25 µg)/test	2 Publications

Product Specific Information

Description: The UCHL1 monoclonal antibody reacts with human CD45RO, a 180 kDa isoform of CD45. CD45RO is expressed by most thymocytes, activated memory T cells, granulocytes and monocytes. CD22 is a ligand for CD45RO. Expression of CD45RO and CD45RA is used commonly to discriminate subsets of peripheral T cells.

Applications Reported: This UCHL1 antibody has been reported for use in flow cytometric analysis.

Applications Tested: This UCHL1 antibody has been pre-diluted and tested by flow cytometric analysis of normal human peripheral blood cells. This may be used at 5 µL (0.25 µg) per test. A test is defined as the amount (µg) of antibody that will stain a cell sample in a final volume of 100 µL. Cell number should be determined empirically but can range from 10⁵ to 10⁸ cells/test.

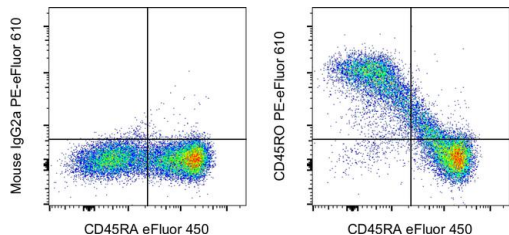
PE-eFluor 610 can be excited with laser lines from 488-561 nm and emits at 607 nm. We recommend using a 610/20 band pass filter (equivalent to PE-Texas Red). Please make sure that your instrument is capable of detecting this fluorochrome.

Light sensitivity: This tandem dye is sensitive to photo-induced oxidation. Please protect this vial and stained samples from light.

Fixation: Samples can be stored in IC Fixation Buffer (Product # 00-8222-49) (100 µL of cell sample + 100 µL of IC Fixation Buffer) or 1-step Fix/Lyse Solution (Product # 00-5333-57) for up to 3 days in the dark at 4°C with minimal impact on brightness and FRET efficiency/compensation. Some generalizations regarding fluorophore performance after fixation can be made, but clone specific performance should be determined empirically.

Excitation: 488-561 nm; Emission: 607 nm; Laser: Blue Laser, Green Laser, Yellow-Green Laser

Product Images For CD45RO Monoclonal Antibody (UCHL1), PE-eFluor™ 610, eBioscience™



CD45RO Antibody (61-0457-42) in Flow

Normal human peripheral blood cells were stained with CD45RA Monoclonal Antibody, eFluor 450 (Product # 48-0458-42) and Mouse IgG2a kappa Isotype Control, PE-eFluor 610 (Product # 61-4724-80) (left) or CD45RO Monoclonal Antibody, PE-eFluor 610 (right). Cells in the lymphocyte gate were used for analysis.

2 References

Flow Cytometry (2)

Cell research

Blocking the recruitment of naive CD4⁺ T cells reverses immunosuppression in breast cancer.

"Published figure using CD45RO monoclonal antibody (Product # 61-0457-42) in Flow Cytometry"

Authors: Su S,Liao J,Liu J,Huang D,He C,Chen F,Yang L,Wu W,Chen J,Lin L,Zeng Y,Ouyang N,Cui X,Yao H,Su F, Huang JD,Lieberman J,Liu Q,Song E

Species

Not Applicable

Dilution

Not Cited

Year

2017

Oncoimmunology

Functional expression of CD137 (4-1BB) on T helper follicular cells.

"Published figure using CD45RO monoclonal antibody (Product # 61-0457-42) in Flow Cytometry"

Authors: Alfaro C,Echeveste JI,Rodriguez-Ruiz ME,Solorzano JL,Perez-Gracia JL,Idoate MA,Lopez-Picazo JM, Sanchez-Paulete AR,Labiano S,Rouzaut A,Oñate C,Aznar A,Lozano MD,Melero I

Species

Not Applicable

Dilution

Not Cited

Year

2015

For Research Use Only. Not for use in diagnostic procedures. Not for resale without express authorization. Products are warranted to operate or perform substantially in conformance with published Product specifications in effect at the time of sale, as set forth in the Production documentation, specifications and/or accompanying package inserts ("Documentation"). No claim of suitability for use in applications regulated by FDA is made. The warranty provided herein is valid only when used by properly trained individuals. Unless otherwise stated in the Documentation, this warranty is limited to one year from date of shipment when the Product is subjected to normal, proper and intended usage. This warranty does not extend to anyone other than the Buyer. Any model or sample furnished to Buyer is merely illustrative of the general type and quality of goods and does not represent that any Product will conform to such model or sample. NO OTHER WARRANTIES, EXPRESS OR IMPLIED, ARE GRANTED INCLUDING WITHOUT LIMITATION, IMPLIED WARRANTIES OF MERCHANTABILITY, FITNESS FOR ANY PARTICULAR PURPOSE, OR NON-INFRINGEMENT. BUYER'S EXCLUSIVE REMEDY FOR NON-CONFORMING PRODUCTS DURING THE WARRANTY PERIOD IS LIMITED TO REPAIR, REPLACEMENT OF OR REFUND FOR THE NON-CONFORMING PRODUCT(S) AT SELLER'S SOLE OPTION. THERE IS NO OBLIGATION TO REPAIR, REPLACE OR REFUND FOR PRODUCTS AS THE RESULT OF (I) ACCIDENT, DISASTER OR EVENT OF FORCE MAJEURE, (II) MISUSE, FAULT OR NEGLIGENCE OF OR BY BUYER, (III) USE OF THE PRODUCTS IN A MANNER FOR WHICH THEY WERE NOT DESIGNED, OR (IV) IMPROPER STORAGE AND HANDLING OF THE PRODUCTS. Unless otherwise expressly stated on the Product or in the documentation accompanying the Product, the Product is intended for research only and is not to be used for any other purpose, including without limitation, unauthorized commercial uses, in vitro diagnostic uses, ex vivo or in vivo therapeutic uses, or any type of consumption by or application to human or animals.