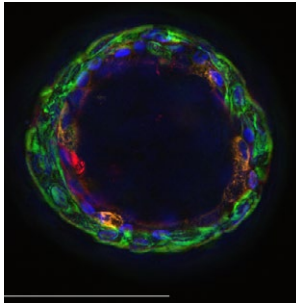


Extraction of Three-Dimensional Structures from Corning® Matrigel® Matrix

Guidelines for Use

CORNING



Representative photomicrograph of 23-day-old human airway organoid that was extracted from Corning Matrigel matrix and then fluorescently labeled with specific markers. Basal cells (green), ciliated cells (red), mucus production from goblet cells (orange), nuclei (blue). Image captured using 40X objective. Scale bar is 100 μ m.

Introduction

Corning Matrigel matrix is a commonly utilized tool for creating three-dimensional (3D) spheroids and organoids. Often the recovery of the 3D structures from the matrix is required for downstream applications such as DNA extraction, histology, or immunostaining. Here we provide guidelines for recovering 3D structures that are embedded in Matrigel matrix. The Matrigel matrix concentration, culture length, and size of the 3D structures will have an impact on the effectiveness of this protocol. Some optimization of volume, wash steps, and incubation time may be required.

Materials

- ▶ Three-dimensional structures embedded in Corning Matrigel matrix
- ▶ Axygen® wide bore tips (Corning Cat. No. TF-205-WB-R-S)
- ▶ Phosphate buffered saline (PBS; Corning Cat. No. 21-040-CV)
- ▶ Corning Cell Recovery solution (Corning Cat. No. 354253)

Procedure

1. Remove as much cell culture medium from the culture as possible taking care not to disturb the cells.
2. Add pre-chilled Corning Cell Recovery solution at a volume $\geq 2X$ that of the Matrigel matrix volume.
3. Pipette up and down gently using wide bore tips to carefully break up the Matrigel matrix without damaging the 3D cultures.
4. Incubate cultures with Corning Cell Recovery solution at 4°C for approximately 20 minutes.
5. Visualize cultures under the microscope to see if the Matrigel matrix has been fully depolymerized and 3D cultures are floating free from Matrigel matrix. It may be necessary to briefly centrifuge cultures, remove the Cell Recovery solution, and repeat steps 2 through 5.
6. If 3D cultures appear free from Matrigel matrix, briefly centrifuge cultures to separate structures from the solution. Remove the Cell Recovery solution and wash cultures with cold PBS several times.

For more specific information on claims, visit the Certificates page at www.corning.com/lifesciences.

Warranty/Disclaimer: Unless otherwise specified, all products are for research use only. Not intended for use in diagnostic or therapeutic procedures. Not for use in humans. Corning Life Sciences makes no claims regarding the performance of these products for clinical or diagnostic applications.

For additional product or technical information, visit www.corning.com/lifesciences or call 800.492.1110. Outside the United States, call +1.978.442.2200 or contact your local Corning sales office.

CORNING

Corning Incorporated
Life Sciences

836 North St.
Building 300, Suite 3401
Tewksbury, MA 01876
t 800.492.1110
t 978.442.2200
f 978.442.2476

www.corning.com/lifesciences

ASIA/PACIFIC

Australia/New Zealand
t 61 427286832

China
t 86 21 3338 4338
f 86 21 3338 4300

India
t 91 124 4604000
f 91 124 4604099

Japan

t 81 3-3586 1996
f 81 3-3586 1291

Korea

t 82 2-796-9500
f 82 2-796-9300

Singapore

t 65 6572-9740
f 65 6735-2913

Taiwan

t 886 2-2716-0338
f 886 2-2516-7500

EUROPE

CSEurope@corning.com

France

t 0800 916 882
f 0800 918 636

Germany

t 0800 101 1153
f 0800 101 2427

The Netherlands

t 020 655 79 28
f 020 659 76 73

United Kingdom

t 0800 376 8660
f 0800 279 1117

All Other European Countries

t +31 (0) 206 59 60 51
f +31 (0) 206 59 76 73

LATIN AMERICA

grupoLA@corning.com

Brasil

t 55 (11) 3089-7400

Mexico

t (52-81) 8158-8400