

Rat IgG1 kappa Isotype Control (eBRG1), PE, eBioscience™

Product Details	
Size	100 µg
Host/Isotype	Rat / IgG1, kappa
Class	Control
Type	Isotype Control
Clone	eBRG1
Conjugate	PE
Form	Liquid
Concentration	0.2 mg/mL
Purification	Affinity chromatography
Storage buffer	PBS, pH 7.2, with 0.1% gelatin
Contains	0.09% sodium azide
Storage conditions	4° C, store in dark, DO NOT FREEZE!
RRID	AB_470047

Applications	Tested Dilution	Publications
Flow Cytometry (Flow)	Assay-Dependent	-
Control (Ctrl)	Assay-Dependent	-

Product Specific Information

Description: The monoclonal rat IgG1, kappa is useful as an isotype control immunoglobulin.

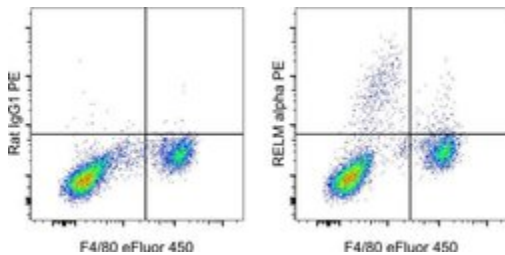
Applications Reported: This rat IgG1 isotype control has been reported for use in flow cytometric analysis.

Applications Tested: The PE rat IgG1 isotype control has been tested by flow cytometric analysis of mouse splenocyte suspensions and can be used at the same concentration as the experimental antibody.

Excitation: 488-561 nm; Emission: 578 nm; Laser: Blue Laser, Green Laser, Yellow-Green Laser.

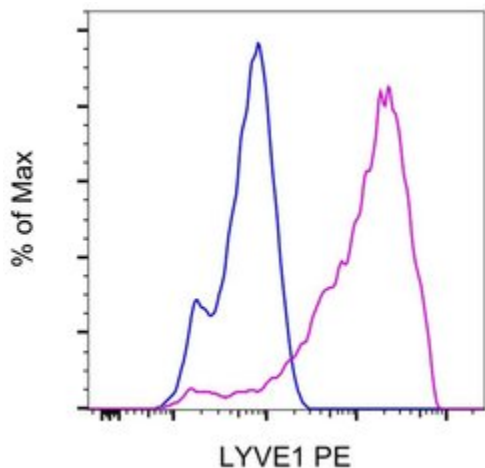
Filtration: 0.2 µm post-manufacturing filtered.

Product Images For Rat IgG1 kappa Isotype Control (eBRG1), PE, eBioscience™



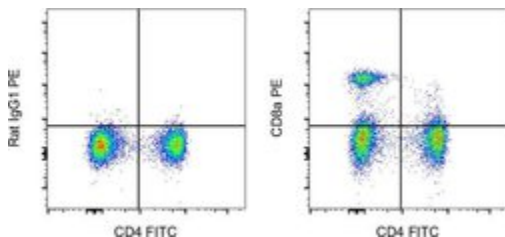
Rat IgG1 kappa Isotype Control (12-4301-82) in Flow

C57BL/6 mouse resident peritoneal exudate cells were surface stained with F4/80 Monoclonal Antibody, eFluor 450 (Product # 48-4801-82). The cells were then fixed and permeabilized using the Intracellular Fixation & Permeabilization Buffer Set (Product # 88-8824-00) and protocol, and intracellularly stained with either 0.25 µg of Rat IgG1 kappa Isotype Control, PE (Product # 12-4301-82) (left) or 0.25 µg of RELM alpha Monoclonal Antibody, PE (Product # 12-5441-82)(right). All cells were used for analysis.



Rat IgG1 kappa Isotype Control (12-4301-82) in Flow

BAF3 cells transfected with mouse LYVE1 were stained with 0.06 µg of Rat IgG1 kappa Isotype Control, PE (Product # 12-4301-82) (blue histogram) or 0.06 µg of LYVE1 Monoclonal Antibody, PE (purple histogram). Total viable cells were used for analysis, as determined by 7-AAD (Product # 00-6993-50).



Rat IgG1 kappa Isotype Control (12-4301-82) in Flow

Normal canine peripheral blood cells were stained with CD4 Monoclonal Antibody, FITC (Product # 11-5040-42) and Rat IgG1 kappa Isotype Control, PE (Product # 12-4301-83) (left) or CD8a Monoclonal Antibody, PE (right). Total viable cells were used for analysis, as determined by 7-AAD (Product # 00-6993-50).

41 References

MSCs loaded with oncolytic reovirus: migration and in vivo virus delivery potential for evaluating anti-cancer effect in tumor-bearing C57BL/6 mice. *Cancer Cell Int* (2021)

Chronic stress physically spares but functionally impairs innate-like invariant T cells. *Cell Rep* (2021)

Expression of CD27 and CD28 on T cells from the peripheral blood of patients with allergic rhinitis. *Exp Ther Med* (2020)

For Research Use Only. Not for use in diagnostic procedures. Not for resale without express authorization. Products are warranted to operate or perform substantially in conformance with published Product specifications in effect at the time of sale, as set forth in the Production documentation, specifications and/or accompanying package inserts ("Documentation"). No claim of suitability for use in applications regulated by FDA is made. The warranty provided herein is valid only when used by properly trained individuals. Unless otherwise stated in the Documentation, this warranty is limited to one year from date of shipment when the Product is subjected to normal, proper and intended usage. This warranty does not extend to anyone other than the Buyer. Any model or sample furnished to Buyer is merely illustrative of the general type and quality of goods and does not represent that any Product will conform to such model or sample. NO OTHER WARRANTIES, EXPRESS OR IMPLIED, ARE GRANTED INCLUDING WITHOUT LIMITATION, IMPLIED WARRANTIES OF MERCHANTABILITY, FITNESS FOR ANY PARTICULAR PURPOSE, OR NON INFRINGEMENT. BUYER'S EXCLUSIVE REMEDY FOR NON-CONFORMING PRODUCTS DURING THE WARRANTY PERIOD IS LIMITED TO REPAIR, REPLACEMENT OF OR REFUND FOR THE NON-CONFORMING PRODUCT(S) AT SELLER'S SOLE OPTION. THERE IS NO OBLIGATION TO REPAIR, REPLACE OR REFUND FOR PRODUCTS AS THE RESULT OF (I) ACCIDENT, DISASTER OR EVENT OF FORCE MAJEURE, (II) MISUSE, FAULT OR NEGLIGENCE OF OR BY BUYER, (III) USE OF THE PRODUCTS IN A MANNER FOR WHICH THEY WERE NOT DESIGNED, OR (IV) IMPROPER STORAGE AND HANDLING OF THE PRODUCTS. Unless otherwise expressly stated on the Product or in the documentation accompanying the Product, the Product is intended for research only and is not to be used for any other purpose, including without limitation, unauthorized commercial uses, in vitro diagnostic uses, ex vivo or in vivo therapeutic uses, or any type of consumption by or application to human or animals.