

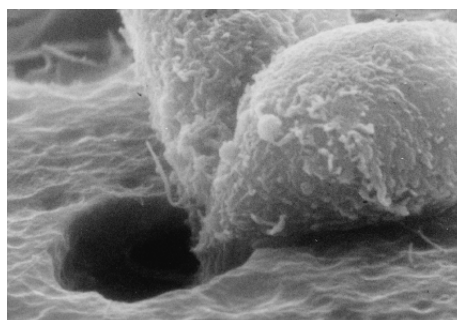
Corning® BioCoat™ Matrigel® Invasion Chambers and GFR Matrigel Invasion Chambers

A convenient, discriminating system for the study of cell invasion *in vitro*.

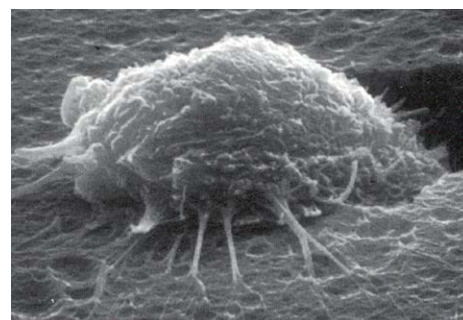


Corning BioCoat Matrigel Invasion Chambers are useful to study cell invasion of malignant and non malignant cells. Corning BioCoat Growth Factor Reduced (GFR) Matrigel Invasion Chambers can be used to study the mechanisms of invasion and to identify factors that interfere with this process in an *in vitro* environment. The Invasion Chambers consist of a Falcon® Cell Culture Insert with an 8.0 µm pore size PET membrane, uniformly coated with Corning Matrigel Matrix, packaged ready-to-use in 6- and 24-well formats.

The Corning Matrigel Matrix/GFR Matrigel Matrix serves as a reconstituted basement membrane *in vitro*. This matrix provides a true barrier to non-invasive cells while presenting an appropriate protein structure for invading cells to penetrate before passing through the membrane. The PET membrane is compatible with most fixatives and can be used with both light and electron microscopy. Processing is simplified as the durable membrane will not tear or curl and remains easy to handle when removed from the insert housing.



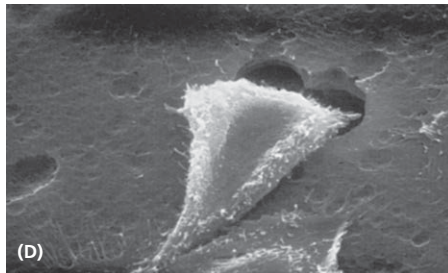
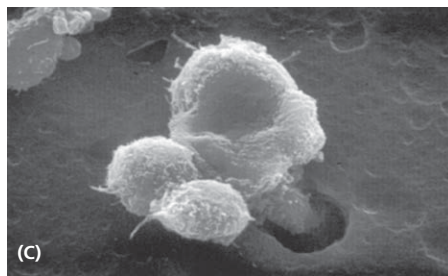
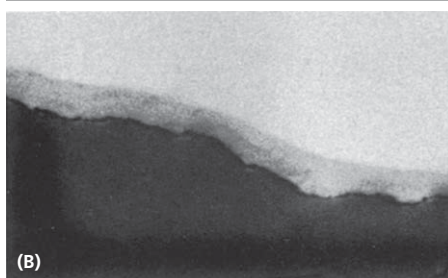
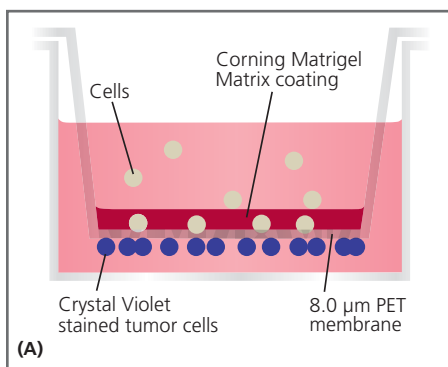
Scanning electron micrograph of two human fibrosarcoma cells (HT-1080 cells), having digested the Corning Matrigel Matrix occluding the membrane and migrating through an 8.0 µm pore of the PET membrane.



Micrograph of cell with numerous processes on the underside of the membrane following its invasion of the Corning Matrigel Matrix.

CORNING

Corning® BioCoat™ Matrigel® Invasion Chambers and GFR Matrigel Invasion Chambers



(A) Schematic of Invasion Chamber. **(B)** Transmission electron micrograph showing even layer of Corning Matrigel Matrix overlaying chamber membrane. **(C)** Cell, having digested Corning Matrigel Matrix, moving into pore. **(D)** Underside of filter membrane showing cells which have invaded pulling themselves onto bottom of membrane.

Photo (B) courtesy of Dr. Nancy Smith, CA State University, Hayward.

Corning BioCoat Matrigel Invasion Chambers/GFR Matrigel Invasion Chambers offer:

- An *in vitro* system for assessing the invasive potential of both malignant and normal cells
- Corning Matrigel Matrix serves as a model of *in vivo* basement membrane
- Standard protocol includes procedure for quantifying percent invasion

Corning BioCoat Matrigel Invasion Chamber in the 6-well format is well suited for selecting invasive cell phenotypes from non-invasive phenotypes in response to a chemoattractant. Post invasion, the cells on the bottom of the membrane can be removed for further study.

Quality Control

Tested for ability to allow invasion of HT-1080 cells, an invasive human fibrosarcoma cell line, and to exclude invasion of 3T3 cells, a noninvasive mouse fibroblast cell line. All lots are tested and found negative for bacteria and fungi.

Storage and Stability

Shipped on dry ice. Upon receipt, store immediately at -20°C. Stable for at least three months from date of shipment.

Ordering Information

| Description | Qty/Pack | Cat. No. |
|---|----------|----------|
| Corning BioCoat Matrigel Invasion Chambers | | |
| Four 6-well plates (6 inserts per plate) | 24 | 354481 |
| Two 24-well plates (12 inserts per plate) | 24 | 354480 |
| Corning BioCoat GFR Matrigel Invasion Chambers | | |
| Two 24-well plates (12 inserts per plate) | 24 | 354483 |

Tip: Remember to order Corning BioCoat 8.0 µm Control Cell Culture Inserts (Cat. No. 354578) when purchasing Corning BioCoat Matrigel Invasion Chambers/GFR Matrigel Invasion Chambers.

For a complete listing of Corning BioCoat products, please visit our website.

Warranty/Disclaimer: Unless otherwise specified, all products are for research use only. Not for use in humans. Not intended for use in diagnostic or therapeutic procedures. Corning Life Sciences makes no claims regarding the performance of these products for clinical or diagnostic applications.

To place an order in the U.S., contact Customer Service at:
tel: **800.492.1110**, fax: 978.442.2476, email: **CLSCustServ@corning.com**

For technical assistance, contact Technical Support at:
tel: **800.492.1110**, fax: 978.442.2476, email: **CLSTechServ@corning.com**

Outside the U.S., contact your local distributor or visit **www.corning.com/lifesciences** to locate your nearest Corning office. For additional Corning product, technical, or distributor information, call **978.442.2200**.

Corning acquired the BioCoat™, Falcon®, and Matrigel® brands.

CORNING

Corning Incorporated

Life Sciences
836 North St.
Building 300, Suite 3401
Tewksbury, MA 01876
t 800.492.1110
t 978.442.2200
f 978.442.2476

www.corning.com/lifesciences