

SOX11 Monoclonal Antibody (SOX11-C1), eBioscience™

| Product Details | |
|--------------------|-------------------------|
| Size | 100 µg |
| Species Reactivity | Human |
| Host/Isotype | Mouse / IgG1, kappa |
| Class | Monoclonal |
| Type | Antibody |
| Clone | SOX11-C1 |
| Conjugate | Unconjugated |
| Form | Liquid |
| Concentration | 0.5 mg/mL |
| Purification | Affinity chromatography |
| Storage buffer | PBS, pH 7.2 |
| Contains | 0.09% sodium azide |
| Storage conditions | 4° C |
| RRID | AB_2573022 |

| Applications | Tested Dilution | Publications |
|---|------------------------------|----------------|
| Western Blot (WB) | 1:1,000 | 2 Publications |
| Immunohistochemistry (IHC) | - | 1 Publication |
| Immunohistochemistry (Paraffin) (IHC (P)) | 5 µg/mL | - |
| Immunocytochemistry (ICC/IF) | 5 µg/mL | - |
| Flow Cytometry (Flow) | Assay-Dependent | 1 Publication |
| ChIP assay (ChIP) | 2.5 µg/10 ⁶ cells | - |

Product Specific Information

Description: The monoclonal antibody SOX11-C1 (C1) recognizes human Sox11. The transcription factor Sox11 is a member of the SOX (sex determining region Y-related HMG (High Mobility Group) Box) family of proteins. Under normal conditions Sox11 is expressed in the developing central nervous system during embryogenesis and has sequence homology to Sox4. Sox11 plays a role in neuronal maturation and epithelial-mesenchymal interactions and is required for the survival of neuronal and mesenchymal progenitor cells. Sox11 is expressed in mantle cell lymphoma (MCL) and in subsets of hairy cell leukemias, Burkitt lymphomas, and B cell lymphoblastic leukemias, but is not expressed in other B cell lymphomas or in normal B lymphocytes. Sox11 is also expressed in epithelial ovarian cancer and gliomas.

Applications Reported: This SOX11-C1 antibody has been reported for use in flow cytometric analysis, western blotting, immunohistochemical staining of formalin-fixed paraffin embedded tissue sections, and immunocytochemistry.

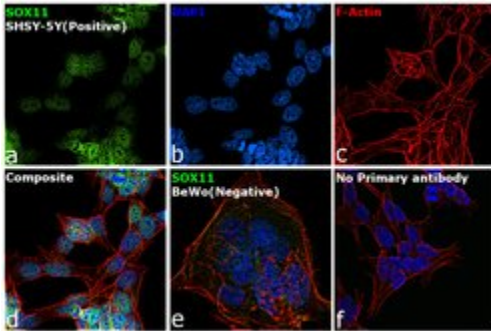
Applications Tested: This SOX11-C1 antibody has been tested by immunohistochemistry of formalin-fixed paraffin embedded tissue using low or high pH antigen retrieval. The antibody can be used at less than or equal to 5 µg/mL. This SOX11-C1 antibody has been tested by immunocytochemistry of fixed and permeabilized cells and can be used at less than or equal to 5 µg/mL. It is recommended that the antibody be carefully titrated for optimal performance in the assay of interest.

Purity: Greater than 90%, as determined by SDS-PAGE.

Aggregation: Less than 10%, as determined by HPLC.

Filtration: 0.2 µm post-manufacturing filtered.

Advanced Verification Data

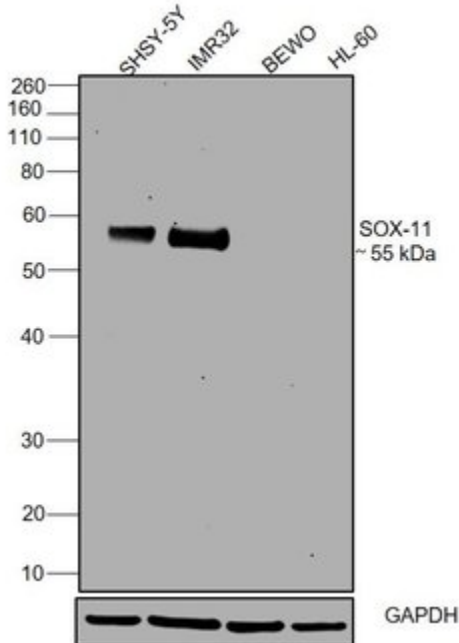


SOX11 Antibody (14-9773-82)

Antibody specificity was demonstrated by detection of differential basal expression of the target across cell models owing to their inherent genetic constitution. Immunofluorescence analysis using SOX11 Monoclonal Antibody (SOX11-C1), eBioscience™ (Product # 14-9773-82) shows increased expression of SOX11 in SHSY-5Y BeWo. Relative expression validation info.

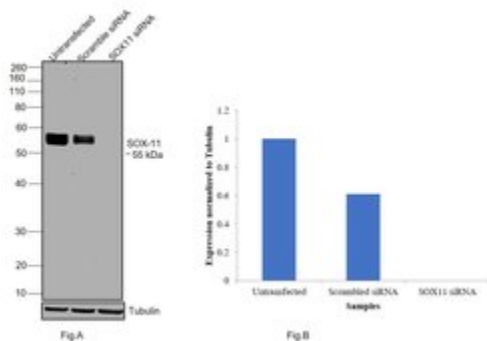
SOX11 Antibody (14-9773-82)

Antibody specificity was demonstrated by detection of differential basal expression of the target across tissues owing to their inherent genetic constitution. Higher expression of SOX11 was observed in SHSY-5Y, IMR32 in comparison to BeWo and HL-60 using SOX11 Monoclonal Antibody (SOX11-C1), eBioscience™ (Product # 14-9773-82) in western blot. Relative expression validation info.



SOX11 Antibody (14-9773-82)

Antibody specificity was demonstrated by siRNA mediated knockdown of target protein. SH-SY5Y cells were transfected with SOX11 siRNA and reduction of signal was observed in Western Blot using SOX11 Monoclonal Antibody (SOX11-C1), eBioscience™ (Product # 14-9773-82).. Knockdown validation info.



4 References

Western Blot (2)

eLife

SOX11 promotes epithelial/mesenchymal hybrid state and alters tropism of invasive breast cancer cells.

"Published figure using SOX11 monoclonal antibody (Product # 14-9773-82) in Western Blot"

Authors: Oliemuller E, Newman R, Tsang SM, Foo S, Muirhead G, Noor F, Haider S, Aurrekoetxea-Rodríguez I, Vivanco MD, Howard BA

Species

Not Applicable

Dilution

Not Cited

Year

2020

BMC cancer

Expanded clinical and experimental use of SOX11 - using a monoclonal antibody.

"Published figure using SOX11 monoclonal antibody (Product # 14-9773-82) in Flow Cytometry"

Authors: Nordström L, Andréasson U, Jerkeman M, Dictor M, Borrebaeck C, Ek S

Species

Not Applicable

Dilution

Not Cited

Year

2012

Immunohistochemistry (1)

BMC cancer

Expanded clinical and experimental use of SOX11 - using a monoclonal antibody.

"Published figure using SOX11 monoclonal antibody (Product # 14-9773-82) in Flow Cytometry"

Authors: Nordström L, Andréasson U, Jerkeman M, Dictor M, Borrebaeck C, Ek S

Species

Not Applicable

Dilution

Not Cited

Year

2012

Flow Cytometry (1)

BMC cancer

Expanded clinical and experimental use of SOX11 - using a monoclonal antibody.

"Published figure using SOX11 monoclonal antibody (Product # 14-9773-82) in Flow Cytometry"

Authors: Nordström L, Andréasson U, Jerkeman M, Dictor M, Borrebaeck C, Ek S

Species

Not Applicable

Dilution

Not Cited

Year

2012

For Research Use Only. Not for use in diagnostic procedures. Not for resale without express authorization. Products are warranted to operate or perform substantially in conformance with published Product specifications in effect at the time of sale, as set forth in the Production documentation, specifications and/or accompanying package inserts ("Documentation"). No claim of suitability for use in applications regulated by FDA is made. The warranty provided herein is valid only when used by properly trained individuals. Unless otherwise stated in the Documentation, this warranty is limited to one year from date of shipment when the Product is subjected to normal, proper and intended usage. This warranty does not extend to anyone other than the Buyer. Any model or sample furnished to Buyer is merely illustrative of the general type and quality of goods and does not represent that any Product will conform to such model or sample. NO OTHER WARRANTIES, EXPRESS OR IMPLIED, ARE GRANTED INCLUDING WITHOUT LIMITATION, IMPLIED WARRANTIES OF MERCHANTABILITY, FITNESS FOR ANY PARTICULAR PURPOSE, OR NON INFRINGEMENT. BUYER'S EXCLUSIVE REMEDY FOR NON-CONFORMING PRODUCTS DURING THE WARRANTY PERIOD IS LIMITED TO REPAIR, REPLACEMENT OF OR REFUND FOR THE NON-CONFORMING PRODUCT(S) AT SELLER'S SOLE OPTION. THERE IS NO OBLIGATION TO REPAIR, REPLACE OR REFUND FOR PRODUCTS AS THE RESULT OF (I) ACCIDENT, DISASTER OR EVENT OF FORCE MAJEURE, (II) MISUSE, FAULT OR NEGLIGENCE OF OR BY BUYER, (III) USE OF THE PRODUCTS IN A MANNER FOR WHICH THEY WERE NOT DESIGNED, OR (IV) IMPROPER STORAGE AND HANDLING OF THE PRODUCTS. Unless otherwise expressly stated on the Product or in the documentation accompanying the Product, the Product is intended for research only and is not to be used for any other purpose, including without limitation, unauthorized commercial uses, in vitro diagnostic uses, ex vivo or in vivo therapeutic uses, or any type of consumption by or application to human or animals.