

Corning® Ultra-Low Attachment Surface Bibliography

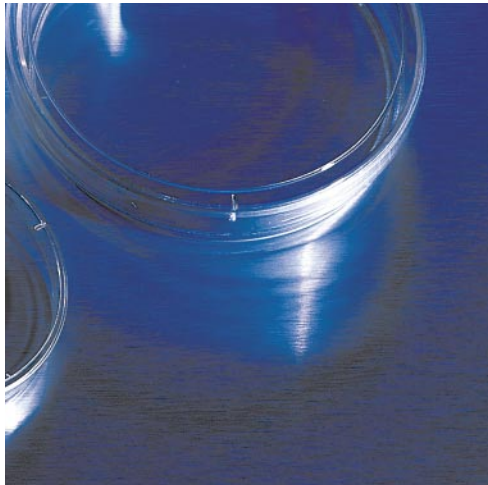
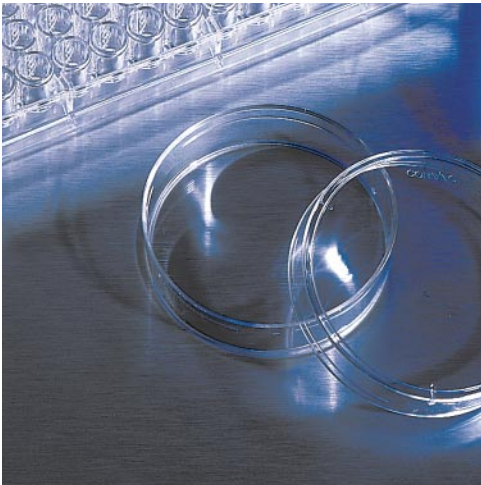
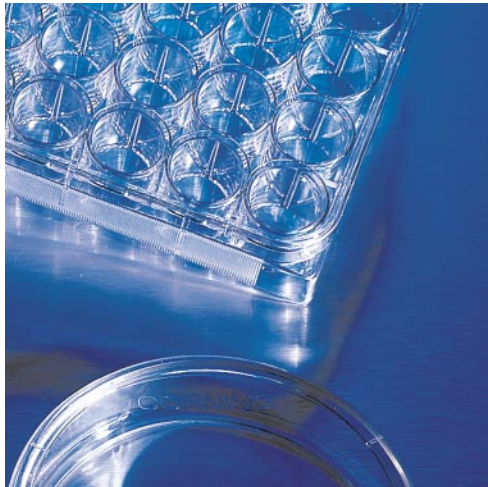
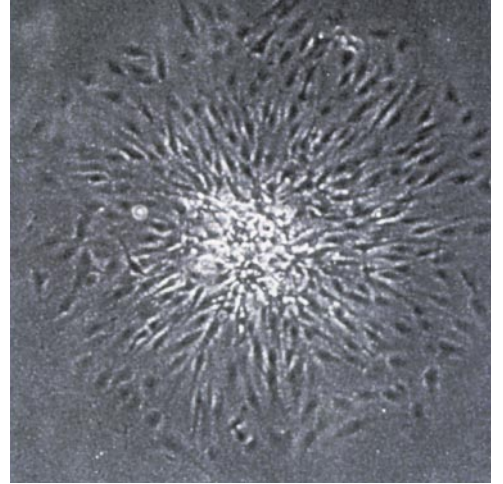


Table of Contents

Introduction	1
Monocytes, Macrophages, Lymphocytes and Neutrophils	1
Spheroid Culture of Tumor and Normal Cells	3
Stem Cells	4
Tissue Engineering	5
Organ Culture	6
Bacterial Growth	7
Assays	7

Introduction

This document is a partial bibliography of some of the research using Corning® Ultra-Low Attachment Surface vessels. It is organized by application and has been developed, in part, with the assistance of the MEDLINE® database from the National Library of Medicine.

Monocytes/Macrophages/Lymphocytes/Neutrophils

- 1. Surface interleukin-10 inhibits listericidal activity by primary macrophages**
S.D. Fleming, P.J.M. Leenen, J.H. Freed, and P.A. Campbell
J. Leukoc. Biol., 1999, 66:961-967.
- 2. Immunoregulation of dendritic cells by IL-10 is mediated through suppression of the PI3K/Akt pathway and I β B kinase activity**
S. Bhattacharyya et al.
Blood First Edition Paper, prepublished online April 27, 2004; DOI 10.1182/blood-2003-12-4302.
- 3. Roles of Interleukin-6 in Activation of STAT Proteins and Recruitment of Neutrophils during *Escherichia coli* Pneumonia**
M.R. Jones, et al.
J. Infectious Diseases, 2006, 193:360-369.
- 4. GM-CSF Regulates Alveolar Macrophage Differentiation and Innate Immunity in the Lung through PU.1**
Y. Shibata et al.
Immunity, 2001, 15:557-567.
- 5. Elevated Concentrations of Nonesterified Fatty Acids Increase Monocyte Expression of CD11b and Adhesion to Endothelial Cells**
W. Zhang, et al.
Arterioscler. Thromb. Vasc. Biol. 2006, 26:514-519. This article is available from:
<http://atvb.ahajournals.org/cgi/content/full/26/3/514>.
- 6. E-LDL and Ox-LDL Differentially Regulate Ceramide and Cholesterol Raft Microdomains in Human Macrophages**
M. Grandl et al.
Cytometry, 2006, Part A 69A:189-191.
- 7. Truncated thioredoxin (Trx80) induces production of interleukin-12 and enhances CD14 expression in human monocytes**
K. Pekkari, J. Avila-Cariño, Å. Bengtsson, R. Gurunath, A. Scheynius, and A. Holmgren
Blood, 15 May 2001, Vol. 97(10):3184-3190.
- 8. Role of PI3-kinase-dependent Bad phosphorylation and altered transcription in cytokine-mediated neutrophil survival**
A.S. Cowburn, K.A. Cadwallader, B.J. Reed, N. Farahi, and E.R. Chilvers
Blood, 1 October 2002, Vol. 100(7):2607-2616.
- 9. Scavenger receptor A mediates H₂O₂ production and suppression of IL-12 release in murine macrophages**
S. Józefowski and L. Kobzik
Journal of Leukocyte Biology, 2004, Vol. 76:1066-1074.

10. ***Anaplasma phagocytophilum* utilizes multiple host evasion mechanisms to thwart NADPH oxidase-mediated killing during neutrophil infection**
J.A. Carlyon, D.A. Latif, M. Pypaert, P. Lacy, and E. Fikrig
Infect. Immun., 2004, August, Vol. 72(8):4772-4783.
11. **The effects of surface chemistry and adsorbed proteins on monocyte/ macrophage adhesion to chemically modified polystyrene surfaces**
M. Shen and T.A. Horbett
J Biomed Mater. Res., 200, Dec. 5, Vol. 57(3):336-45.
12. **A Graves' disease associated Kozak sequence snp enhances the efficiency of *Cd40* gene translation: a case for translational pathophysiology**
E.M. Jacobson, E. Concepcion, T. Oashi, and Y. Tomer
Endocrinology, 2005, Vol. 146:2684.
13. **The fate of monocytes during 24 h of culture as revealed by flow cytometry and electron microscopy**
P.K. Lund, E. Namork , S.H. Brorson , A.B. Westvik , G.B. Joo , R. Ovstebo, and P. Kierulf
J. Immunol. Methods, 2002, Dec. 1, Vol. 270(1):63-76.
14. **Flow cytometric evaluation of apoptosis, necrosis and recovery when culturing monocytes**
P.K. Lund, A.B. Westvik, G.B. Joo, R. Ovstebo, K.B. Haug, and P. Kierulf
J. Immunol. Methods, 2001, June 1, Vol. 252(1-2):45-55
15. **Apoptotic effect of Rituximab on peripheral blood B cells in rheumatoid arthritis**
P. Szodoray et al.
Scandinavian Journal of Immunology, 2004, Vol. 60(1-2):209.
16. **Lipopolysaccharide and ceramide docking to CD14 provokes ligand-specific receptor clustering in rafts**
A. Pfeiffer et al.
Eur. J. Immunol., 2001, Vol. 31:3153-3164 .
17. **Enzymatically degraded LDL preferentially binds to CD14^{high} CD16⁺ monocytes and induces Foam cell formation mediated only in part by the Class B scavenger-receptor CD36**
M. Kapinsky et al.
Arteriosclerosis, Thrombosis, and Vascular Biology, 2001, Vol. 21:1004
18. **Lysophosphatidic acid promotes phorbol-ester induced apoptosis in TF-1 cells by interfering with adhesion**
J. Lai, C. Lu, H. Yang-Yen, and Z. Chang
Biochem. J. 2001, Vol. 359:227-233.
19. **Induction of intracellular cytokine production in human monocytes/macrophages stimulated with ligands of pattern recognition receptors**
B. Mytar et al.
Inflammation Research, 2004, Vol. 53(3):100-106.
20. **Effect of welding fume solubility on lung macrophage viability and function *in vitro***
J.M. Antonini, N.J. Lawryk, G.G. Krishna Murthy, and J.D. Brain
J. Toxicol. Environ. Health Part A, 1999, Vol. 58(6):343-363.

21. Alveolar macrophage cytokine production in response to air particles *in vitro*: role of endotoxin

Y. Ning, A. Imrich, C. Goldsmith, G. Qin, and L. Kobzik
J. Toxicol. Environ. Health Part A, 2000, Vol. 59(3):1165-180.

Spheroid Culture of Tumor and Normal Cells

22. Phenotypic Stability of Articular Chondrocytes *In Vitro*: The Effects of Culture Models, Bone Morphogenetic Protein 2, and Serum Supplementation

M. C. Stewart, K. M. Saunders, N. Burton-Wurster, J. N. MacLeod
J. Bone Miner. Res. 2000, 15:166-174.

23. Hedgehog Signaling and Bmi-1 Regulate Self-renewal of Normal and Malignant Human Mammary Stem Cells

S. Liu et al.
Cancer Res. 2006, 66(12):6063-6071.

24. *In vitro* propagation and transcriptional profiling of human mammary stem/progenitor cells

G. Dontu, et al.
Genes and Development, 2003, Vol. 17:1253-1270.

25. Roles of the basic helix-loop-helix genes *Hes1* and *Hes5* in expansion of neural stem cells of the developing brain

T. Ohtsuka, M. Sakamoto, F. Guillemot, and R. Kageyama
J. Biol. Chem., 2001, Vol. 276(32):30467-30474.

26. Role of Notch signaling in cell-fate determination of human mammary stem/progenitor cells

G. Dontu, et al.
Breast Cancer Res., 2004, Vol. 6:R605-R615

27. Human tissue models for exploration applications

T.F. Elliott, A. Castilleja, J.L. Rosenfeld, L.B. Jones, and J.E. Love
2005 ASGSB Annual Meeting, Abstract No. 120.

28. Characterization of non-adherent mammosphere cultures of normal human breast tissue

A.J. Fridriksdottir, et al.
2005 AACR Meeting, Abstract No. 2046.

29. Modulation of coxsackie-adenovirus receptor expression for increased adenoviral transgene expression

A Hemminki, A. Kanerva, B. Liu, M. Wang, R.D. Alvarez, G.P. Siegal, and D.T. Curiel
Cancer Research, 2003, Feb. 15, Vol. 63(4):847-53. PMID: 12591736.

30. Phospholipase C δ -4 overexpression upregulates ErbB1/2 expression, Erk signaling pathway, and proliferation in MCF-7 cells

D.W. Leung, et al.
Molecular Cancer, 2004, Vol. 3:15. The electronic version of this article can be found online at <http://www.molecular-cancer.com/content/3/1/15>.

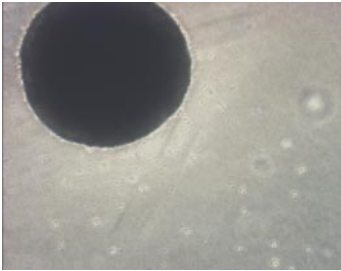
31. Bystander effect-mediated gene therapy of gliomas using genetically engineered neural stem cells

S. Li, T. Tokuyama, J. Yamamoto, M. Koide, N. Yokota, and H. Namba
Cancer Gene Therapy, 2005, Vol. 12:600-607.

32. **The role of apoptosis in the *in vitro* synergistic inhibition of human ovarian carcinoma by IFN- γ in combination with carboplatin or paclitaxel**
 J.P. Fruehauf, L. Tee, and E. Spack
Proc. Am. Soc. Clin. Oncol., 2003, Vol. 22:493, Abstr. No. 1985.
33. **Overexpression of AKT2/Protein Kinase B β leads to up-regulation of β 1 Integrins, increased invasion, and metastasis of human breast and ovarian cancer cells**
 M.J. Arboleda et al.
Cancer Research, 2003, Vol. 63:196-206. For full article see
<http://cancerres.aacrjournals.org/cgi/content/full/63/1/196>.

Stem Cells

34. **Comparison of the gene expression profile of undifferentiated human embryonic stem cell lines and differentiating embryoid bodies**
 B. Bhattacharya et al.
BMC Developmental Biology 2005, 5:22.
35. **Gene expression profiling shows that macrophages derived from mouse embryonic stem cells is an improved in vitro model for studies of vascular disease**
 H. Lindmarka, B. Rosengrena, E. Hurt-Camejoa, C.E.G. Bruderc
Exp. Cell Res., 2004, 300:335-344.
36. **Growth inhibitors promote differentiation of insulin-producing tissue from embryonic stem cells**
 Y. Hori et al.
PNAS, 2002, 99:16105-16110.
37. **Glucocorticoid hormones decrease proliferation of embryonic neural stem cells through ubiquitin-mediated degradation of Cyclin D1**
 M. Sundberg et al.
J. Neurosci., 2006, 26(20):5402-5410.
38. ***In vitro* propagation and transcriptional profiling of human mammary stem/progenitor cells**
 G. Dontu, et al.
Genes & Development, 2003, Vol. 17:1253-1270.
39. **Aberrant genomic imprinting in Rhesus monkey embryonic stem cells**
 Fujimoto et al.
Stem Cells, 2006; 24:595-603.
40. **Sequestration and synthesis: The source of insulin in cell clusters differentiated from murine embryonic stem cells**
 H.J. Paek, J.R. Morgan, M.J. Lysaght
Stem Cells, 2005, Vol. 23(7):862-867.
41. **Protein Kinase C signaling transduces endorphin-primed cardiogenesis in GTR1 embryonic stem cells**
 C. Ventura, E. Zinellu, E. Maninchedda, M. Fadda, and M. Maioli
Circ. Res., 2003; Vol. 92:617-622.
42. **Butyric and retinoic mixed ester of hyaluronan — a novel differentiating glycoconjugate affording a high throughput of cardiogenesis in embryonic stem cells**
 C. Ventura et al.
Biol. Chem., 2004, Vol. 279(22):23574-23579.



The Ultra-Low Attachment surface enables tight, well-defined embryoid body formation (murine ES cell grown in feeder-free conditions).

- 43. SCL/Tal-1 is essential for hematopoietic commitment of the hemangioblast but not for its development**
S.L. D'Souza, A.G. Elefanty, and G. Keller
Blood, 15 May 2005, Vol. 105(10):3862-3870.
- 44. Transcriptome profiling of human and murine ESCs identifies divergent paths required to maintain the stem cell state**
C.L. Wei et al.
Stem Cells, 2005, Vol. 23:166-185.
- 45. Propagation and maintenance of undifferentiated human embryonic stem cells**
M.S. Bodnar, J.J. Meneses, R.T. Rodriguez, and M.T. Firpo
Stem Cells and Development, June 2004, Vol. 13(3):243-253.
- 46. Tracking mesoderm induction and its specification to the hemangioblast during embryonic stem cell differentiation**
H. J. Fehling et al.
Development, 2003, Vol. 130:4217-4227.
- 47. Sequential development of hematopoietic and cardiac mesoderm during embryonic stem cell differentiation**
V. Kouskoff, G. Lacaud, S. Schwantz, H.J. Fehling, and G. Keller
PNAS, September 13, 2005, Vol. 102(37):13170-13175.
- 48. Gene-trap expression screening to identify endothelial-specific genes**
Masanori Hirashima, Alan Bernstein, William L. Stanford, and Janet Rossant
Blood, 2004, Vol. 104(3):711-718.
- 49. Surgical techniques for cell transplantation into the mouse cochlea**
F. Iguchi et al.
Acta Otolaryngol. (Stockh), 2004, Vol. 124:43-47.

Tissue Engineering

- 50. Simple and versatile methods for the fabrication of arrays of live mammalian cells**
T. Peterbauer, J. Heitz, M. Olbrichb, S. Hering
Lab Chip, 2006, 6:857-863.
- 51. Bone tissue engineering with human mesenchymal stem cell sheets constructed using magnetite nanoparticles and magnetic force.**
K. Shimizu et al.
J. Biomed. Mater. Res. B Appl. Biomater., 2007 Feb 5; [Epub ahead of print].
- 52. Construction of multi-layered cardiomyocyte sheets using magnetite nanoparticles and magnetic force**
K. Shimizu et al.
Biotechnol. Bioeng., 2007 Mar 1;96(4):803-9.
- 53. Dynamic flexure independently stimulates engineered heart valve tissue development**
G.C. Engelmayer, Jr. et al.
Summer Bioengineering Conference, 2003, June 25-29, Sonesta Beach Resort in Key Biscayne, Florida.
- 54. Novel methodology for fabrication of tissue-engineered tubular constructs using magnetite nanoparticles and magnetic force**
A. Ito et al.
Tissue Engineering, September 2005, Vol. 11(9-10):1553-1561.

55. **The effect of RGD peptide-conjugated magnetite cationic liposomes on cell growth and cell sheet harvesting**
 A. Ito, K. Ino, T. Kobayashi, and H. Honda
Biomaterials, 2005 Nov., Vol. 26(31):6185-93. PMID:15899515.
56. **Construction and delivery of tissue-engineered human retinal pigment epithelial cell sheets, using magnetite nanoparticles and magnetic force**
 A. Ito, et al.
Tissue Engineering, 2005, Mar-Apr; Vol. 11(3-4):489-96.
57. **Construction and harvest of multilayered keratinocyte sheets using magnetite nanoparticles and magnetic force**
 A. Ito, M. Hayashida, K. Honda, K. Hata, H. Kagami, M. Ueda, and T. Kobayashi
Tissue Engineering, May 2004, Vol. 10(5-6):873-880.

Organ Culture

58. **Isoforms of human recombinant follicle-stimulating hormone: comparison of effects on murine follicle development in vitro.**
 V.A. Vitt et al.
Biol. Reproduction, 1998; 59:854-861.
59. **Patterns of growth, oestradiol and progesterone released by in vitro cultured mouse ovarian follicles indicate consecutive selective events during follicle development.**
 Fehrenbach, N. Nusse, P.L. Nayudu
J. Reprod. Fertility, 1998; 113:287-297.
60. **Luteinizing hormone has a stage-limited effect on preantral follicle development *in vitro***
 J. Wu, L. P.L. Nayudu, P.S. Kiesel, and H.W. Michelmann
Biology of Reproduction, 2000, Vol. 63:320-327.
61. **Glucocorticoids suppress transcriptional up-regulation of bradykinin receptors in a murine *in vitro* model of chronic airway inflammation**
 Y. Zhang, M. Adner, and L.-O. Cardell
Clinical and Experimental Allergy, 2005, Vol. 35(4):531-538.
62. **Isoforms of human recombinant follicle-stimulating hormone: comparison of effects on murine follicle development *in vitro***
 V. A. Vitt et al.
Biol. Reproduction, 1998, Vol. 59:854-861.
63. **Patterns of growth, oestradiol and progesterone released by in vitro cultured mouse ovarian follicles indicate consecutive selective events during follicle development**
 A. Fehrenbach, N. Nusse, P. L. Nayudu
J. Reprod. Fertility, 1998, Vol. 113:287-297.

Bacterial Growth

- 64. Roles of Interleukin-6 in activation of STAT proteins and recruitment of neutrophils during *Escherichia coli* pneumonia**
M.R. Jones et al.
J. Infectious Diseases, 2006, 193:360-369.
- 65. Surface interleukin-10 inhibits listericidal activity by primary macrophages**
S.D. Fleming, P.J.M. Leenen, J.H. Freed, P.A. Campbell
J. Leukoc. Biol., 1999, 66:961-967.
- 66. *Anaplasma phagocytophilum* utilizes multiple host evasion mechanisms to thwart NADPH oxidase-mediated killing during neutrophil infection**
J.A. Carlyon et al.
Infect. Immun., 2004, August, Vol. 72(8):4772-4783.
- 67. Inhibition of gene expression in *Escherichia coli* by antisense phosphorodiamidate morpholino oligomers**
B.L. Geller et al.
Antimicrob. Agents Chemother., 2003, October, Vol. 47(10):3233-323.
- 68. Inhibition of *Mycobacterium smegmatis* gene expression and growth using antisense peptide nucleic acids**
A. Kulyté, N. Nekhotiaeva, S.K. Awasthi, and L. Good
J. Mol. Microbiol. Biotechnol., 2005, Vol. 9:101-109.

Assays

- 69. Individual Cas Phosphorylation Sites Are Dispensable for Processive Phosphorylation by Src and Anchorage-independent Cell Growth**
Parag Patwardhan et al.
Biol. Chem., 2006, 281, No. 30, pp. 20689-20697.
- 70. Combinatorial antibody libraries from cancer patients yield ligand-mimetic Arg-Gly-Asp-containing immunoglobulins that inhibit breast cancer metastasis**
B.F.-H. et al.
PNAS, December 7, 2004, Vol. 101(9):17210-17215.
- 71. Effect of electroporation on radiosensitization with cisplatin in two cell lines with different chemo- and radiosensitivity**
S. Kranjc, M. Cemazar, A. Grosel, Z. Pipan, and G. Sersa
Radiol. Oncol., 2003, Vol. 37(2):101-7.

For additional product or technical information, please visit www.corning.com/lifesciences or call 1.800.492.1110. Customers outside the United States, please call +1.978.442.2200 or contact your local Corning sales office listed below.

CORNING

Corning Incorporated *Life Sciences*

Tower 2, 4th Floor
900 Chelmsford St.
Lowell, MA 01851
t 800.492.1110
t 978.442.2200
f 978.442.2476

www.corning.com/lifesciences

Worldwide Support Offices

ASIA/PACIFIC

Australia
t 61 2-9416-0492
f 61 2-9416-0493

China
t 86 21-3222-4666
f 86 21-6288-1575

Hong Kong
t 852-2807-2723
f 852-2807-2152

India

t 91-124-235 7850
f 91-124-401 0207

Japan

t 81 (0) 3-3586 1996/1997
f 81 (0) 3-3586 1291/1292

Korea

t 82 2-796-9500
f 82 2-796-9300

Singapore

t 65 6733-6511
f 65 6861-2913

Taiwan

t 886 2-2716-0338
f 886 2-2716-0339

EUROPE

France
t 0800 916 882
f 0800 918 636

Germany

t 0800 101 1153
f 0800 101 2427

The Netherlands

t 31 20 655 79 28
f 31 20 659 76 73

United Kingdom

t 0800 376 8660
f 0800 279 1117

All Other European Countries

t 31 (0) 20 659 60 51
f 31 (0) 20 659 76 73

LATIN AMERICA

Brasil

t (55-11) 3089-7419
f (55-11) 3167-0700

Mexico

t (52-81) 8158-8400
f (52-81) 8313-8589