

Ki-67 Monoclonal Antibody (SolA15), Alexa Fluor 700, eBioscience™

| Product Details | |
|-----------------------------|--|
| Size | 100 µg |
| Species Reactivity | Dog, Cynomolgus monkey, Human, Mouse, Non-human primate, Rat |
| Published Species | Rat, Mouse, Human |
| Host/Isotype | Rat / IgG2a, kappa |
| Recommended Isotype Control | Rat IgG2a kappa Isotype Control (eBR2a), Alexa Fluor 700, eBioscience™ |
| Class | Monoclonal |
| Type | Antibody |
| Clone | SolA15 |
| Conjugate | Alexa Fluor® 700 |
| Form | Liquid |
| Concentration | 0.2 mg/mL |
| Purification | Affinity chromatography |
| Storage buffer | PBS, pH 7.2, with 0.1% gelatin |
| Contains | 0.09% sodium azide |
| Storage conditions | 4° C, store in dark, DO NOT FREEZE! |
| RRID | AB_2637480 |

| Applications | Tested Dilution | Publications |
|---|-----------------|-----------------|
| Immunohistochemistry (IHC) | - | 56 Publications |
| Immunohistochemistry (Paraffin) (IHC (P)) | - | 2 Publications |
| Immunocytochemistry (ICC/IF) | - | 36 Publications |
| Flow Cytometry (Flow) | 0.25 µg/test | 51 Publications |
| Functional Assay (FN) | - | 1 Publication |

Product Specific Information

Description: The monoclonal antibody SolA15 recognizes mouse and rat Ki-67, a 300 kDa nuclear protein. Ki-67 is present during all active phases of the cell cycle (G1, S, G2, and mitosis), but is absent from resting cells (G0). Ki-67 is detected within the nucleus during interphase but redistributes to the chromosomes during mitosis. Ki-67 is used as a marker for determining the growth fraction of a given population of cells. In studies of tumor cells, the "Ki-67 labeling index" refers to the number of Ki-67 positive cells within the population and this is used to predict outcome of particular cancer types. Ki-67 has been shown to interact with the DNA-bound protein chromobox protein homolog 3 (CBX3) (heterochromatin).

The SolA15 antibody also recognizes human, non-human primate and canine Ki-67.

Applications Reported: This SolA15 antibody has been reported for use in intracellular staining followed by flow cytometric analysis.

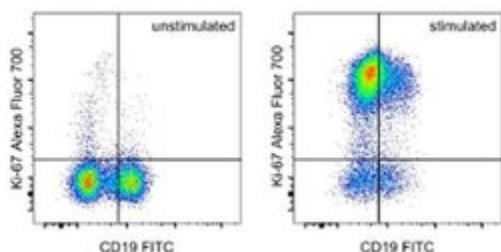
Applications Tested: This SolA15 antibody has been tested by intracellular staining and flow cytometric analysis of stimulated mouse splenocytes using the Fcγ3/Transcription Factor Staining Buffer Set (cat. 00-5523) and protocol. Please refer to Best Protocols: Protocol B: One step protocol for (nuclear) intracellular proteins located under the Resources Tab online. This antibody can be used at less than or equal to 0.25 µg per test. A test is defined as the amount (µg) of antibody that will stain a cell sample in a final volume of 100 µL. Cell number should be determined empirically but can range from 10⁵ to 10⁸ cells/test. It is recommended that the antibody be carefully titrated for optimal performance in the assay of interest.

Alexa Fluor® 700 emits at 723 nm and can be excited with the red laser (633 nm). Most instruments will require a 685 LP mirror and 710/20 filter. Please make sure that your instrument is capable of detecting this fluorochrome.

Excitation: 633-647 nm; Emission: 723 nm; Laser: Red Laser.

Filtration: 0.2 µm post-manufacturing filtered.

Product Images For Ki-67 Monoclonal Antibody (SolA15), Alexa Fluor 700, eBioscience™



Ki-67 Antibody (56-5698-82) in Flow

Mouse splenocytes were unstimulated (left) or stimulated for 2 days with Anti-Mouse CD3e Functional Grade Purified (Product # 16-0031-82) (right). Cells were surface stained with Anti-Mouse CD19 FITC (Product # 11-0193-82) then fixed and permeabilized with the Fcγ3/Transcription Factor Staining Buffer Set (Product # 00-5523-00) and intracellularly stained with 0.125 µg of Anti-Mouse/Rat Ki-67 Alexa Fluor® 700. Total viable cells, as determined by Fixable Viability Dye eFluor® 450 (Product # 65-0863-14), were used for analysis.

[View more figures on thermofisher.com](http://thermofisher.com)

Immunohistochemistry (56)

eNeuro

Poor Concordance of Floxed Sequence Recombination in Single Neural Stem Cells: Implications for Cell Autonomous Studies.

"Published figure using Ki-67 monoclonal antibody (Product # 56-5698-82) in Immunohistochemistry"

Authors: Dause T.J, Kirby ED

Species
Not Applicable

Dilution
Not Cited

Year
2021

JCI insight

Delta-like 4 is required for pulmonary vascular arborization and alveolarization in the developing lung.

"Published figure using Ki-67 monoclonal antibody (Product # 56-5698-82) in Immunohistochemistry"

Authors: Xia S, Menden HL, Townley N, Mabry SM, Johnston J, Nyp MF, Heruth DP, Korfhagen T, Sampath V

Species
Not Applicable

Dilution
Not Cited

Year
2021

[View more IHC references on thermofisher.com](#)

Immunohistochemistry (Paraffin) (2)

Frontiers in oncology

Radiation Induced Metabolic Alterations Associate With Tumor Aggressiveness and Poor Outcome in Glioblastoma.

"Published figure using Ki-67 monoclonal antibody (Product # 56-5698-82) in Immunocytochemistry"

Authors: Gupta K, Vuckovic I, Zhang S, Xiong Y, Carlson BL, Jacobs J, Olson I, Petterson XM, Macura SI, Sarkaria J, Burns TC

Species
Not Applicable

Dilution
Not Cited

Year
2020

Journal of translational medicine

Selective pharmacological inhibition of DDR1 prevents experimentally-induced glomerulonephritis in prevention and therapeutic regime.

"Published figure using Ki-67 monoclonal antibody (Product # 56-5698-82) in Immunohistochemistry (Paraffin)"

Authors: Moll S, Yasui Y, Abed A, Murata T, Shimada H, Maeda A, Fukushima N, Kanamori M, Uhles S, Badi L, Cagarelli T, Formentini I, Drawnel F, Georges G, Bergauer T, Gasser R, Bonfil RD, Fridman R, Richter H, Funk J, Moeller MJ, Chatziantoniou C, Prunotto M

Species
Not Applicable

Dilution
Not Cited

Year
2018

More applications with references on thermofisher.com

ICC/IF (36)

Flow (51)

FN (1)

For Research Use Only. Not for use in diagnostic procedures. Not for resale without express authorization. Products are warranted to operate or perform substantially in conformance with published Product specifications in effect at the time of sale, as set forth in the Production documentation, specifications and/or accompanying package inserts ("Documentation"). No claim of suitability for use in applications regulated by FDA is made. The warranty provided herein is valid only when used by properly trained individuals. Unless otherwise stated in the Documentation, this warranty is limited to one year from date of shipment when the Product is subjected to normal, proper and intended usage. This warranty does not extend to anyone other than the Buyer. Any model or sample furnished to Buyer is merely illustrative of the general type and quality of goods and does not represent that any Product will conform to such model or sample. NO OTHER WARRANTIES, EXPRESS OR IMPLIED, ARE GRANTED INCLUDING WITHOUT LIMITATION, IMPLIED WARRANTIES OF MERCHANTABILITY, FITNESS FOR ANY PARTICULAR PURPOSE, OR NON INFRINGEMENT. BUYER'S EXCLUSIVE REMEDY FOR NON-CONFORMING PRODUCTS DURING THE WARRANTY PERIOD IS LIMITED TO REPAIR, REPLACEMENT OF OR REFUND FOR THE NON-CONFORMING PRODUCT(S) AT SELLER'S SOLE OPTION. THERE IS NO OBLIGATION TO REPAIR, REPLACE OR REFUND FOR PRODUCTS AS THE RESULT OF (I) ACCIDENT, DISASTER OR EVENT OF FORCE MAJEURE, (II) MISUSE, FAULT OR NEGLIGENCE OF OR BY BUYER, (III) USE OF THE PRODUCTS IN A MANNER FOR WHICH THEY WERE NOT DESIGNED, OR (IV) IMPROPER STORAGE AND HANDLING OF THE PRODUCTS. Unless otherwise expressly stated on the Product or in the documentation accompanying the Product, the Product is intended for research only and is not to be used for any other purpose, including without limitation, unauthorized commercial uses, in vitro diagnostic uses, ex vivo or in vivo therapeutic uses, or any type of consumption by or application to human or animals.