

Ly-6G/Ly-6C Monoclonal Antibody (RB6-8C5), APC, eBioscience™

Product Details	
Size	100 µg
Species Reactivity	Mouse
Published Species	Dog, Mouse, Human
Host/Isotype	Rat / IgG2b, kappa
Recommended Isotype Control	Rat IgG2b kappa Isotype Control (eB149/10H5), APC, eBioscience™
Class	Monoclonal
Type	Antibody
Clone	RB6-8C5
Conjugate	APC
Form	Liquid
Concentration	0.2 mg/mL
Purification	Affinity chromatography
Storage buffer	PBS, pH 7.2, with 0.1% gelatin
Contains	0.09% sodium azide
Storage conditions	4° C, store in dark, DO NOT FREEZE!
RRID	AB_469476

Applications	Tested Dilution	Publications
Western Blot (WB)	-	1 Publication
Immunocytochemistry (ICC/IF)	-	2 Publications
Flow Cytometry (Flow)	0.125 µg/test	150 Publications
Functional Assay (FN)	-	2 Publications
Miscellaneous PubMed (Misc)	-	1 Publication

Product Specific Information

Description: The RB6-8C5 monoclonal antibody reacts with mouse Ly-6G, a 21-25 kDa protein also known as the myeloid differentiation antigen Gr-1. A GPI-linked protein, Gr-1 is expressed by the myeloid lineage in a developmentally regulated manner in the bone marrow. While monocytes only express Gr-1 transiently during their bone marrow development, the expression of Gr-1 on bone marrow granulocytes as well as on peripheral neutrophils is a good marker for these populations.

eBioscience testing indicates that in the bone marrow and lysed whole blood, the antibody clone RB6-8C5 also stains cells that express the highest levels of Ly6c (as defined by staining with antibody clone HK1.4). It is recommended that 1A8-Ly6G (cat. 9668) be used when looking at Ly-6G specific targets.

Applications Reported: The RB6-8C5 antibody has been reported for use in flow cytometric analysis.

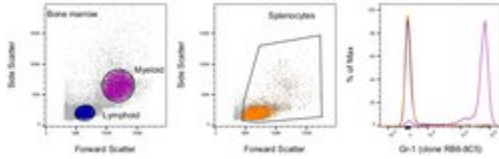
Applications Tested: The RB6-8C5 antibody has been tested by flow cytometric analysis of mouse bone marrow cells and splenocytes. This can be used at less than or equal to 0.125 µg per test. A test is defined as the amount (µg) of antibody that will

stain a cell sample in a final volume of 100 μ L. Cell number should be determined empirically but can range from 10^5 to 10^8 cells /test. It is recommended that the antibody be carefully titrated for optimal performance in the assay of interest.

Excitation: 633-647 nm; Emission: 660 nm; Laser: Red Laser.

Filtration: 0.2 μ m post-manufacturing filtered.

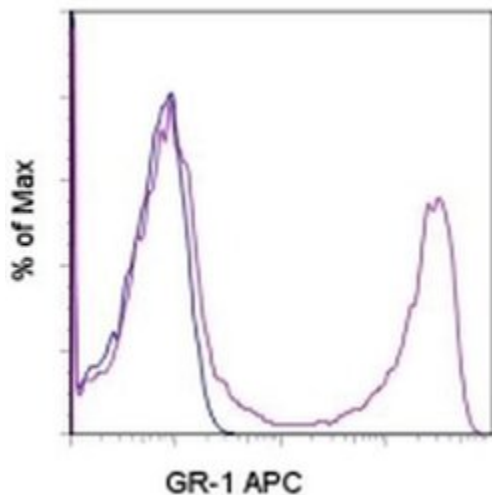
Advanced Verification Data



Ly-6G/Ly-6C Antibody (17-5931-82)

Staining of mouse splenocytes and bone marrow cells. As expected based on known relative expression patterns, Gr-1 clone RB6-8C5 stains cells in the bone marrow myeloid gate and not in the splenocytes gate or bone marrow lymphoid gate. Details: Balb/c bone marrow cells (left) and splenocytes (middle) were surface stained with Gr-1 (clone RB6-8C5) followed by staining with 7-AAD. Viable bone marrow cells in the lymphoid (blue histogram) and myeloid (purple histogram) gates and viable splenocytes (orange histogram) were used for analysis. Relative expression validation info.

Product Images For Ly-6G/Ly-6C Monoclonal Antibody (RB6-8C5), APC, eBioscience™



Ly-6G/Ly-6C Antibody (17-5931-82) in Flow

Staining of C57BL/6 bone marrow cells with 0.125 μ g of Rat IgG2b kappa Isotype Control APC (Product # 17-4031-82) (blue histogram) or 0.125 μ g of Anti-Mouse Ly-6G (Gr-1) APC (purple histogram). Total viable cells were used for analysis.

[View more figures on thermofisher.com](https://www.thermofisher.com)

Western Blot (1)

PLoS genetics

Stage-dependent and locus-specific role of histone demethylase Jumonji D3 (JMJD3) in the embryonic stages of lung development.

"17-5931 was used in Western Blotting to provide molecular insights into the mechanisms by which Jmjd3 regulates gene expression in the embryonic stages of lung development."

Authors: Li Q,Wang HY,Chepelev I,Zhu Q,Wei G,Zhao K,Wang RF

Species
Mouse

Dilution
Not Cited

Year
2014

Immunocytochemistry (2)

iScience

Pollen-derived RNAs Are Found in the Human Circulation.

"17-5931 was used in Immunofluorescence to demonstrate that pollen-derived plant miRNAs can be horizontally transferred into the circulation via the pulmonary system in humans."

Authors: Koupounova M,Mick E,Corkrey HA,Singh A,Tanriverdi SE,Vitseva O,Levy D,Keeler AM,Ezzaty Mirhashemi M, ElMallah MK,Gerstein M,Rozowsky J,Tanriverdi K,Freedman JE

Species
Human

Dilution
Not Cited

Year
2019

Nature communications

The role of platelets in mediating a response to human influenza infection.

"17-5931 was used in Immunocytochemistry-immunofluorescence to determine if platelet processes are activated during influenza infection."

Authors: Koupounova M,Corkrey HA,Vitseva O,Manni G,Pang CJ,Clancy L,Yao C,Rade J,Levy D,Wang JP,Finberg RW, Kurt-Jones EA,Freedman JE

Species
Mouse

Dilution
Not Cited

Year
2019

Flow Cytometry (150)

Frontiers in immunology

Bacterial and Fungal Toll-Like Receptor Activation Elicits Type I IFN Responses in Mast Cells.

"Published figure using Ly-6G/Ly-6C monoclonal antibody (Product # 17-5931-82) in Flow Cytometry"

Authors: Kornstädt L,Pierre S,Weigert A,Ebersberger S,Schäufele TJ,Kolbinger A,Schmid T,Cohnen J,Thomas D, Ferreirós N,Brüne B,Ebersberger I,Scholich K

Species
Not Applicable

Dilution
Not Cited

Year
2021

[View more Flow references on thermofisher.com](#)

More applications with references on thermofisher.com

FN (2) **Misc (1)**

For Research Use Only. Not for use in diagnostic procedures. Not for resale without express authorization. Products are warranted to operate or perform substantially in conformance with published Product specifications in effect at the time of sale, as set forth in the Production documentation, specifications and/or accompanying package inserts ("Documentation"). No claim of suitability for use in applications regulated by FDA is made. The warranty provided herein is valid only when used by properly trained individuals. Unless otherwise stated in the Documentation, this warranty is limited to one year from date of shipment when the Product is subjected to normal, proper and intended usage. This warranty does not extend to anyone other than the Buyer. Any model or sample furnished to Buyer is merely illustrative of the general type and quality of goods and does not represent that any Product will conform to such model or sample. NO OTHER WARRANTIES, EXPRESS OR IMPLIED, ARE GRANTED INCLUDING WITHOUT LIMITATION, IMPLIED WARRANTIES OF MERCHANTABILITY, FITNESS FOR ANY PARTICULAR PURPOSE, OR NON INFRINGEMENT. BUYER'S EXCLUSIVE REMEDY FOR NON-CONFORMING PRODUCTS DURING THE WARRANTY PERIOD IS LIMITED TO REPAIR, REPLACEMENT OF OR REFUND FOR THE NON-CONFORMING PRODUCT(S) AT SELLER'S SOLE OPTION. THERE IS NO OBLIGATION TO REPAIR, REPLACE OR REFUND FOR PRODUCTS AS THE RESULT OF (I) ACCIDENT, DISASTER OR EVENT OF FORCE MAJEURE, (II) MISUSE, FAULT OR NEGLIGENCE OF OR BY BUYER, (III) USE OF THE PRODUCTS IN A MANNER FOR WHICH THEY WERE NOT DESIGNED, OR (IV) IMPROPER STORAGE AND HANDLING OF THE PRODUCTS. Unless otherwise expressly stated on the Product or in the documentation accompanying the Product, the Product is intended for research only and is not to be used for any other purpose, including without limitation, unauthorized commercial uses, in vitro diagnostic uses, ex vivo or in vivo therapeutic uses, or any type of consumption by or application to human or animals.