

CD45RO Monoclonal Antibody (UCHL1), eFluor™ 450, eBioscience™

Product Details	
Size	100 Tests
Species Reactivity	Human
Published Species	Human
Host/Isotype	Mouse / IgG2a, kappa
Recommended Isotype Control	Mouse IgG2a kappa Isotype Control (eBM2a), eFluor™ 450, eBioscience™
Class	Monoclonal
Type	Antibody
Clone	UCHL1
Conjugate	eFluor™ 450
Form	Liquid
Concentration	5 µL/Test
Purification	Affinity chromatography
Storage buffer	PBS, pH 7.2, with 0.1% gelatin, 0.2% BSA
Contains	0.09% sodium azide
Storage conditions	4° C, store in dark, DO NOT FREEZE!
RRID	AB_10852567

Applications	Tested Dilution	Publications
Flow Cytometry (Flow)	5 µL (0.5 µg)/test	5 Publications

Product Specific Information

Description: The UCHL1 monoclonal antibody reacts with human CD45RO, a 180 kDa isoform of CD45. CD45RO is expressed by most thymocytes, activated memory T cells, granulocytes and monocytes. CD22 is a ligand for CD45RO. Expression of CD45RO and CD45RA is used commonly to discriminate subsets of peripheral T cells.

Applications Reported: This UCHL1 antibody has been reported for use in flow cytometric analysis.

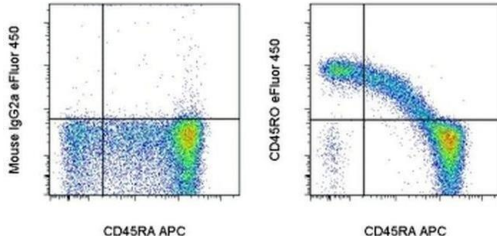
Applications Tested: This UCHL1 antibody has been pre-titrated and tested by flow cytometric analysis of normal human peripheral blood cells. This can be used at 5 µL (0.5 µg) per test. A test is defined as the amount (µg) of antibody that will stain a cell sample in a final volume of 100 µL. Cell number should be determined empirically but can range from 10⁵ to 10⁸ cells/test.

eFluor® 450 is an alternative to Pacific Blue®. eFluor® 450 emits at 445 nm and is excited with the Violet laser (405 nm). Please make sure that your instrument is capable of detecting this fluorochrome.

Excitation: 405 nm; **Emission:** 445 nm; **Laser:** Violet Laser.

Filtration: 0.2 µm post-manufacturing filtered.

Product Images For CD45RO Monoclonal Antibody (UCHL1), eFluor™ 450, eBioscience™



CD45RO Antibody (48-0457-42) in Flow

Staining of normal human peripheral blood cells with Anti-Human CD45RA APC (Product # 17-0458-42) and Mouse IgG2a K Isotype Control eFluor® 450 (Product # 48-4724-82) (left) or Anti-Human CD45RO eFluor® 450 (right). Cells in the lymphocyte gate were used for analysis.

5 References

Flow Cytometry (5)

Retrovirology

Longitudinal analysis of subtype C envelope tropism for memory CD4⁺ T cell subsets over the first 3 years of untreated HIV-1 infection.

"48-0457 was used in Flow cytometry/Cell sorting to determine the viral tropism of subtype C (C-HIV) Envelope (Env) clones for different CD4⁺ T cell subsets and whether tropism changes during acute to chronic disease progression."

Authors: Gartner MJ, Gorry PR, Tumpach C, Zhou J, Dantanarayana A, Chang JJ, Angelovich TA, Ellenberg P, Laumaea AE, Nonyane M, Moore PL, Lewin SR, Churchill MJ, Flynn JK, Roche M

Species
Human

Dilution
Not Cited

Year
2020

Cell research

Blocking the recruitment of naive CD4⁺ T cells reverses immunosuppression in breast cancer.

"48-0457 was used in Flow cytometry/Cell sorting to demonstrate that blocking PITPNM3 recognition of CCL18 could be an attractive immunotherapy approach for treating breast cancer."

Authors: Su S, Liao J, Liu J, Huang D, He C, Chen F, Yang L, Wu W, Chen J, Lin L, Zeng Y, Ouyang N, Cui X, Yao H, Su F, Huang JD, Lieberman J, Liu Q, Song E

Species
Human

Dilution
Not Cited

Year
2017

[View more Flow references on thermofisher.com](#)

More applications with references on thermofisher.com

For Research Use Only. Not for use in diagnostic procedures. Not for resale without express authorization. Products are warranted to operate or perform substantially in conformance with published Product specifications in effect at the time of sale, as set forth in the Production documentation, specifications and/or accompanying package inserts ("Documentation"). No claim of suitability for use in applications regulated by FDA is made. The warranty provided herein is valid only when used by properly trained individuals. Unless otherwise stated in the Documentation, this warranty is limited to one year from date of shipment when the Product is subjected to normal, proper and intended usage. This warranty does not extend to anyone other than the Buyer. Any model or sample furnished to Buyer is merely illustrative of the general type and quality of goods and does not represent that any Product will conform to such model or sample. NO OTHER WARRANTIES, EXPRESS OR IMPLIED, ARE GRANTED INCLUDING WITHOUT LIMITATION, IMPLIED WARRANTIES OF MERCHANTABILITY, FITNESS FOR ANY PARTICULAR PURPOSE, OR NON-INFRINGEMENT. BUYER'S EXCLUSIVE REMEDY FOR NON-CONFORMING PRODUCTS DURING THE WARRANTY PERIOD IS LIMITED TO REPAIR, REPLACEMENT OF OR REFUND FOR THE NON-CONFORMING PRODUCT(S) AT SELLER'S SOLE OPTION. THERE IS NO OBLIGATION TO REPAIR, REPLACE OR REFUND FOR PRODUCTS AS THE RESULT OF (I) ACCIDENT, DISASTER OR EVENT OF FORCE MAJEURE, (II) MISUSE, FAULT OR NEGLIGENCE OF OR BY BUYER, (III) USE OF THE PRODUCTS IN A MANNER FOR WHICH THEY WERE NOT DESIGNED, OR (IV) IMPROPER STORAGE AND HANDLING OF THE PRODUCTS. Unless otherwise expressly stated on the Product or in the documentation accompanying the Product, the Product is intended for research only and is not to be used for any other purpose, including without limitation, unauthorized commercial uses, in vitro diagnostic uses, ex vivo or in vivo therapeutic uses, or any type of consumption by or application to human or animals.