

# CD16 Monoclonal Antibody (eBioCB16 (CB16)), FITC, eBioscience™

Product Details	
Size	100 Tests
Species Reactivity	Human
Published Species	Human, Mouse
Host/Isotype	Mouse / IgG1, kappa
Recommended Isotype Control	Mouse IgG1 kappa Isotype Control (P3.6.2.8.1), FITC, eBioscience™
Class	Monoclonal
Type	Antibody
Clone	eBioCB16 (CB16)
Conjugate	FITC
Form	Liquid
Concentration	5 µL/Test
Purification	Affinity chromatography
Storage buffer	PBS, pH 7.2, with 0.1% gelatin, 0.2% BSA
Contains	0.09% sodium azide
Storage conditions	4° C, store in dark, DO NOT FREEZE!
RRID	AB_10805747

Applications	Tested Dilution	Publications
Immunocytochemistry (ICC/IF)	-	2 Publications
Flow Cytometry (Flow)	5 µL (0.125 µg)/test	29 Publications
T-Cell Activation (TCA)	-	1 Publication

## Product Specific Information

Description: The eBioCB16 monoclonal antibody recognizes CD16 (Fc gammaRIII), the low-affinity receptor for IgG with an apparent molecular weight of 50-80 kDa. CD16 is represented by two similar genes, CD16A (Fc gammaRIIIA), which exists as a hetero-oligomeric polypeptide-anchored form in macrophages and NK cells and CD16B (Fc gammaRIIIB), which exist as a monomeric GPI-anchored form in neutrophils. Furthermore, there are two known polymorphisms of CD16B, NA-1 and NA-2. Individuals homozygous for NA-2 show a lower phagocytic capacity compared with NA-1. CD16 binds IgG in the form of immune complexes and shows preferential binding of IgG1 and IgG3 isotypes and minimal binding of IgG2 and IgG4. Upon IgG binding, both CD16 isoforms initiate signal transduction cascades that lead to a variety of responses including antibody-dependent cell-mediated cytotoxicity (ADCC), phagocytosis, degranulation and proliferation.

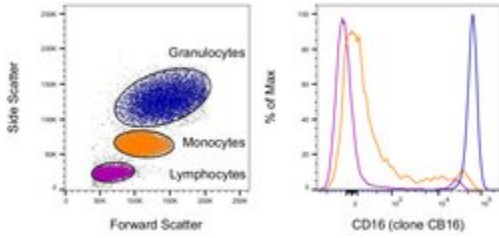
Applications Reported: This eBioCB16 (CB16) antibody has been reported for use in flow cytometric analysis.

Applications Tested: This eBioCB16 (CB16) antibody has been pre-titrated and tested by flow cytometric analysis of normal human peripheral blood cells. This can be used at 5 µL (0.125 µg) per test. A test is defined as the amount (µg) of antibody that will stain a cell sample in a final volume of 100 µL. Cell number should be determined empirically but can range from 10<sup>5</sup> to 10<sup>8</sup> cells/test.

Excitation: 488 nm; Emission: 520 nm; Laser: Blue Laser.

Filtration: 0.2 µm post-manufacturing filtered.

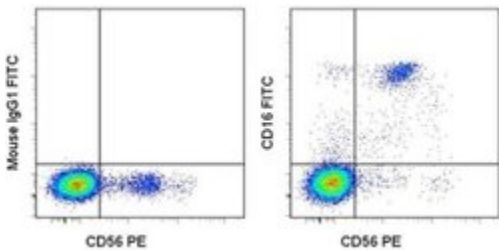
## Advanced Verification Data



### CD16 Antibody (11-0168-42)

Staining of human peripheral blood cells. As expected based on known relative expression patterns, CD16 clone CB16 stains all granulocytes, a subset of monocytes and a subset of lymphocytes (NK cells). Details: Normal human whole blood was surface stained with CD16 (clone CB16). After staining, red blood cells were lysed using 1-step Fix/Lyse Buffer. Cells in the lymphocyte (purple histogram), monocyte (orange histogram), or granulocyte (blue histogram) gates were used for analysis. Relative expression validation info.

## Product Images For CD16 Monoclonal Antibody (eBioCB16 (CB16)), FITC, eBioscience™



### CD16 Antibody (11-0168-42) in Flow

Staining of normal human peripheral blood cells with Anti-Human CD56 (NCAM) PE (Product # 12-0567-42) and Mouse IgG1 K Isotype Control FITC (Product # 11-4714-42) (left) or Anti-Human CD16 FITC (right). Cells in the lymphocyte gate were used for analysis.

[View more figures on thermofisher.com](http://thermofisher.com)

## Immunocytochemistry (2)

### OncoTargets and therapy

#### A DNA vaccine encoding mutated HPV58 mE6E7-Fc-GPI fusion antigen and GM-CSF and B7.1.

"Published figure using CD16 monoclonal antibody (Product # 11-0168-42) in Immunofluorescence"

Authors: Wang H, Yu J, Li L

**Species**  
Mouse

**Dilution**  
1:100

**Year**  
2015

### Arthritis research & therapy

#### Decreased plasma levels of soluble CD18 link leukocyte infiltration with disease activity in spondyloarthritis.

"Published figure using CD16 monoclonal antibody (Product # 11-0168-42) in Immunofluorescence"

Authors: Kragstrup TW, Jalilian B, Hvid M, Kjærgaard A, Østgård R, Schiøttz-Christensen B, Jurik AG, Robinson WH, Vorup-Jensen T, Deleuran B

**Species**  
Not Applicable

**Dilution**  
Not Cited

**Year**  
2014

## Flow Cytometry (29)

### Wellcome open research

#### -----A type I IFN, prothrombotic hyperinflammatory neutrophil signature is distinct for COVID-19 ARDS--.

"11-0168-42 was used in Flow Cytometry to map the molecular basis for neutrophil reprogramming in the distinct clinical entities of COVID-19 and non-COVID-19 ARDS."

Authors: Reyes L, A Sanchez-Garcia M, Morrison T, Howden AJM, Watts ER, Arienti S, Sadiku P, Coelho P, Mirchandani AS, Zhang A, Hope D, Clark SK, Singleton J, Johnston S, Grecian R, Poon A, McNamara S, Harper I, Fourman MH, Brenes AJ, Pathak S, Lloyd A, Blanco GR, von Kriegsheim A, Ghesquiere B, Vermaelen W, Cologna CT, Dhaliwal K, Hirani N, Dockrell DH, Whyte MKB, Griffith D, Cantrell DA, Walmsley SR

**Species**  
Human

**Dilution**  
1:100

**Year**  
2021

### NPJ Parkinson's disease

#### Ex vivo expansion of dysfunctional regulatory T lymphocytes restores suppressive function in Parkinson's disease.

"11-0168-42 was used in Flow Cytometry to document a shift towards a pro-inflammatory peripheral immune response in patients with Parkinson's disease (PD)."

Authors: Thome AD, Atassi F, Wang J, Faridar A, Zhao W, Thonhoff JR, Beers DR, Lai EC, Appel SH

**Species**  
Human

**Dilution**  
Not Cited

**Year**  
2021

[View more Flow references on thermofisher.com](#)

## More applications with references on thermofisher.com

## TCA (1)

For Research Use Only. Not for use in diagnostic procedures. Not for resale without express authorization. Products are warranted to operate or perform substantially in conformance with published Product specifications in effect at the time of sale, as set forth in the Production documentation, specifications and/or accompanying package inserts ("Documentation"). No claim of suitability for use in applications regulated by FDA is made. The warranty provided herein is valid only when used by properly trained individuals. Unless otherwise stated in the Documentation, this warranty is limited to one year from date of shipment when the Product is subjected to normal, proper and intended usage. This warranty does not extend to anyone other than the Buyer. Any model or sample furnished to Buyer is merely illustrative of the general type and quality of goods and does not represent that any Product will conform to such model or sample. NO OTHER WARRANTIES, EXPRESS OR IMPLIED, ARE GRANTED INCLUDING WITHOUT LIMITATION, IMPLIED WARRANTIES OF MERCHANTABILITY, FITNESS FOR ANY PARTICULAR PURPOSE, OR NON INFRINGEMENT. BUYER'S EXCLUSIVE REMEDY FOR NON-CONFORMING PRODUCTS DURING THE WARRANTY PERIOD IS LIMITED TO REPAIR, REPLACEMENT OF OR REFUND FOR THE NON-CONFORMING PRODUCT(S) AT SELLER'S SOLE OPTION. THERE IS NO OBLIGATION TO REPAIR, REPLACE OR REFUND FOR PRODUCTS AS THE RESULT OF (I) ACCIDENT, DISASTER OR EVENT OF FORCE MAJEURE, (II) MISUSE, FAULT OR NEGLIGENCE OF OR BY BUYER, (III) USE OF THE PRODUCTS IN A MANNER FOR WHICH THEY WERE NOT DESIGNED, OR (IV) IMPROPER STORAGE AND HANDLING OF THE PRODUCTS. Unless otherwise expressly stated on the Product or in the documentation accompanying the Product, the Product is intended for research only and is not to be used for any other purpose, including without limitation, unauthorized commercial uses, in vitro diagnostic uses, ex vivo or in vivo therapeutic uses, or any type of consumption by or application to human or animals.