

Ly-6G/Ly-6C Monoclonal Antibody (RB6-8C5), eFluor 506, eBioscience™

Product Details	
Size	100 µg
Species Reactivity	Mouse
Host/Isotype	Rat / IgG2b, kappa
Recommended Isotype Control	Rat IgG2b kappa Isotype Control (eB149/10H5), eFluor 506, eBioscience™
Class	Monoclonal
Type	Antibody
Clone	RB6-8C5
Conjugate	eFluor® 506
Form	Liquid
Concentration	0.2 mg/mL
Purification	Affinity chromatography
Storage buffer	PBS, pH 7.2
Contains	0.09% sodium azide
Storage conditions	4° C, store in dark, DO NOT FREEZE!
RRID	AB_2866456

Applications	Tested Dilution	Publications
Immunohistochemistry (IHC)	-	10 Publications
Immunohistochemistry (Paraffin) (IHC (P))	-	1 Publication
Immunohistochemistry (Frozen) (IHC (F))	-	1 Publication
Immunocytochemistry (ICC/IF)	-	2 Publications
Flow Cytometry (Flow)	0.125 µg/test	62 Publications
In Situ Hybridization (ISH) (ISH)	-	1 Publication

Product Specific Information

Description: The RB6-8C5 monoclonal antibody reacts with mouse Ly-6G, a 21-25 kDa protein also known as the myeloid differentiation antigen Gr-1. A GPI-linked protein, Gr-1 is expressed by the myeloid lineage in a developmentally regulated manner in the bone marrow. While monocytes only express Gr-1 transiently during their bone marrow development, the expression of Gr-1 on bone marrow granulocytes as well as on peripheral neutrophils is a good marker for these populations.

eBioscience testing indicates that in the bone marrow and lysed whole blood, the antibody clone RB6-8C5 also stains cells that express the highest levels of Ly6c (as defined by staining with antibody clone HK1.4). It is recommended that 1A8-Ly6G (cat. 9668) be used when looking at Ly-6G specific targets.

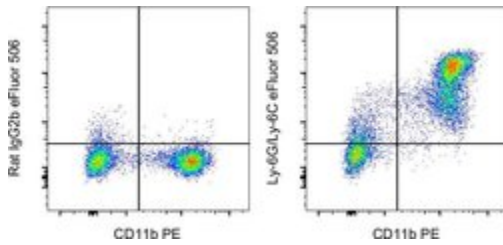
Applications Reported: This RB6-8C5 antibody has been reported for use in flow cytometric analysis.

Applications Tested: This RB6-8C5 antibody has been tested by flow cytometric analysis of mouse bone marrow cells. This may be used at less than or equal to 0.125 µg per test. A test is defined as the amount (µg) of antibody that will stain a cell sample in a final volume of 100 µL. Cell number should be determined empirically but can range from 10⁵ to 10⁸ cells/test. It is recommended that the antibody be carefully titrated for optimal performance in the assay of interest.

eFluor 506 can be excited with the violet laser line (405 nm) and emits at 506 nm. We recommend using a 510/20 band pass filter, or equivalent. Please make sure that your instrument is capable of detecting this fluorochrome.

Excitation: 405 nm; Emission: 506 nm; Laser: Violet Laser

Product Images For Ly-6G/Ly-6C Monoclonal Antibody (RB6-8C5), eFluor 506, eBioscience™



Ly-6G/Ly-6C Antibody (69-5931-82) in Flow

C57BL/6 mouse bone marrow cells were stained with CD11b Monoclonal Antibody, PE (Product # 12-0112-85) and 0.06 µg of Rat IgG2b kappa Isotype Control, eFluor 506 (Product # 69-4031-82) (left) or 0.06 µg of Ly-6G/Ly-6C Monoclonal Antibody, eFluor 506 (right). Cells in the myeloid gate were used for analysis.

[View more figures on thermofisher.com](https://www.thermofisher.com)

Immunohistochemistry (10)

JCI insight

Analysis of leukocyte transepithelial migration using an in vivo murine colonic loop model.

"Published figure using Ly-6G/Ly-6C monoclonal antibody (Product # 69-5931-82) in Immunohistochemistry"

Authors: Flemming S, Luissint AC, Nusrat A, Parkos CA

Species
Not Applicable

Dilution
Not Cited

Year
2018

Frontiers in cellular and infection microbiology

Gastric TFF1 Expression from Acute to Chronic *Helicobacter* Infection.

"Published figure using Ly-6G/Ly-6C monoclonal antibody (Product # 69-5931-82) in Immunohistochemistry"

Authors: Esposito R, Morello S, Vllahu M, Eletto D, Porta A, Tosco A

Species
Not Applicable

Dilution
Not Cited

Year
2018

[View more IHC references on thermofisher.com](#)

Immunohistochemistry (Paraffin) (1)

Oncotarget

C/EBP homologous protein (CHOP) deficiency ameliorates renal fibrosis in unilateral ureteral obstructive kidney disease.

"Published figure using Ly-6G/Ly-6C monoclonal antibody (Product # 69-5931-82) in Immunohistochemistry (Paraffin)"

Authors: Liu SH, Wu CT, Huang KH, Wang CC, Guan SS, Chen LP, Chiang CK

Species
Not Applicable

Dilution
Not Cited

Year
2016

Immunohistochemistry (Frozen) (1)

The American journal of pathology

Neutralization of Gro alpha and macrophage inflammatory protein-2 attenuates renal ischemia/reperfusion injury.

"Published figure using Ly-6G/Ly-6C monoclonal antibody (Product # 69-5931-82) in Immunohistochemistry (Frozen)"

Authors: Miura M, Fu X, Zhang QW, Remick DG, Fairchild RL

Species
Not Applicable

Dilution
Not Cited

Year
2001

More applications with references on thermofisher.com

ICC/IF (2)

Flow (62)

ISH (1)

For Research Use Only. Not for use in diagnostic procedures. Not for resale without express authorization. Products are warranted to operate or perform substantially in conformance with published Product specifications in effect at the time of sale, as set forth in the Production documentation, specifications and/or accompanying package inserts ("Documentation"). No claim of suitability for use in applications regulated by FDA is made. The warranty provided herein is valid only when used by properly trained individuals. Unless otherwise stated in the Documentation, this warranty is limited to one year from date of shipment when the Product is subjected to normal, proper and intended usage. This warranty does not extend to anyone other than the Buyer. Any model or sample furnished to Buyer is merely illustrative of the general type and quality of goods and does not represent that any Product will conform to such model or sample. NO OTHER WARRANTIES, EXPRESS OR IMPLIED, ARE GRANTED INCLUDING WITHOUT LIMITATION, IMPLIED WARRANTIES OF MERCHANTABILITY, FITNESS FOR ANY PARTICULAR PURPOSE, OR NON-INFRINGEMENT. BUYER'S EXCLUSIVE REMEDY FOR NON-CONFORMING PRODUCTS DURING THE WARRANTY PERIOD IS LIMITED TO REPAIR, REPLACEMENT OF OR REFUND FOR THE NON-CONFORMING PRODUCT(S) AT SELLER'S SOLE OPTION. THERE IS NO OBLIGATION TO REPAIR, REPLACE OR REFUND FOR PRODUCTS AS THE RESULT OF (I) ACCIDENT, DISASTER OR EVENT OF FORCE MAJEURE, (II) MISUSE, FAULT OR NEGLIGENCE OF OR BY BUYER, (III) USE OF THE PRODUCTS IN A MANNER FOR WHICH THEY WERE NOT DESIGNED, OR (IV) IMPROPER STORAGE AND HANDLING OF THE PRODUCTS. Unless otherwise expressly stated on the Product or in the documentation accompanying the Product, the Product is intended for research only and is not to be used for any other purpose, including without limitation, unauthorized commercial uses, in vitro diagnostic uses, ex vivo or in vivo therapeutic uses, or any type of consumption by or application to human or animals.