

## NeoPlex™ STI Panel Comparison Chart

Targets	NeoPlex™ STI-7	NeoPlex™ STI-7 PLUS	NeoPlex™ STI-14
Chlamydia trachomatis (CT)	○		○
Neisseria gonorrhoeae (NG)	○		○
Trichomonas vaginalis (TV)	○		○
Mycoplasma hominis (MH)	○		○
Mycoplasma genitalium (MG)	○		○
Ureaplasma urealyticum (UU)	○		○
Ureaplasma parvum (UP)	○		○
Herpes simplex virus type 1 (HSV-1)		○	○
Herpes simplex virus type 2 (HSV-2)		○	○
Treponema pallidum (TP)		○	○
Gardnerella vaginalis (GV)		○	○
Candida albicans (CA)		○	○
Haemophilus ducreyi (HD)		○	○
Group B Streptococcus (GBS)		○	○

## NeoPlex™ STI Order Information

Cat. No.	Product	Description	Size
NS01A	NeoPlex™ STI-14 Detection kit	Simultaneous detection of 14 STI Pathogens	96 Tests/Kit
GM3500	NeoPlex™ STI-7 Detection kit	Simultaneous detection of 7 major STI Pathogens	96 Tests/Kit
GM3600	NeoPlex™ STI-7 PLUS Detection kit	Simultaneous detection of 7 additional STI Pathogens	96 Tests/Kit

### GeneMatrix Inc.

KoreaBio Park B Bldg. 8F, 700 Daewangpangyo-ro, Bundang-gu  
 Seongnam-si, Gyeonggi-do, 13488 South Korea  
 Tel : 82-31-628-2020  
 Email : sales@genematrix.net

Easy and Fast



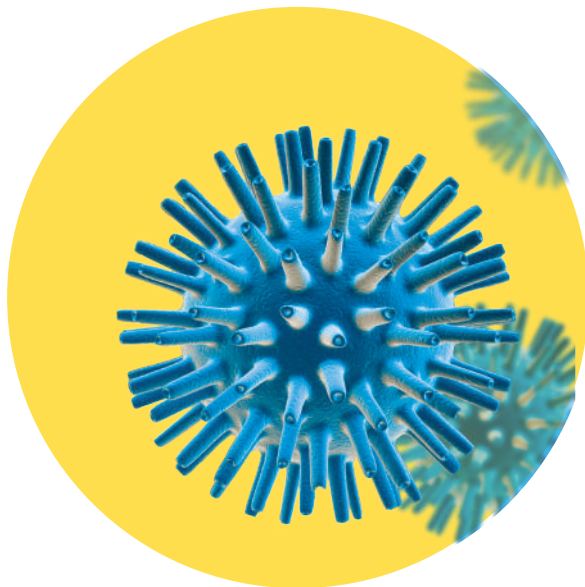
---

# STI-14

## Detection Kit

---

Simultaneous Detection of  
14 STI-Causing Pathogens with  
Multiplex Real-Time PCR

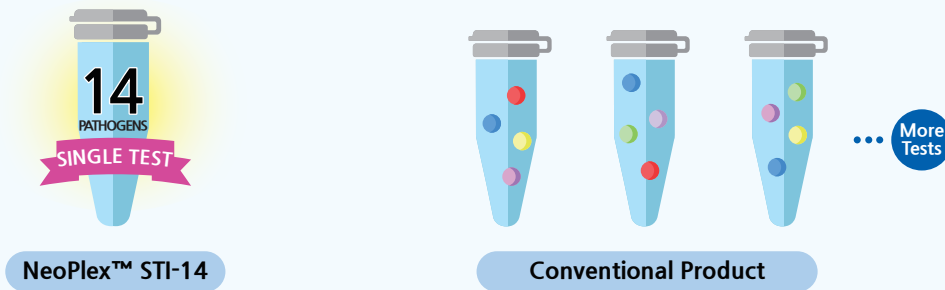


# STI-14

# STI-14 Detection Kit

**Sexually transmitted infections (STIs)** are infections that cause more than 1 million new patients every day. The symptoms of many STIs may not be obvious initially, and this results in a greater risk of unintended transmissions. The undetected or mistreated STIs can progress to cause many symptoms including discharge from the penis, vagina or anus, genital ulcers, abdominal or pelvic pain, and even miscarriage or infertility. Therefore an early and accurate detection of STIs is essential to promote patient’s health and prevent morbidity.

**NeoPlex™ STI-14 Detection Kit** is the multiplex real-time PCR kit that can detect 14 STI-causing pathogens simultaneously with a single-tube PCR reaction. Based on proprietary C-Tag™ technology, NeoPlex™ STI-14 Detection Kit is able to report the result within 4 hours from DNA extraction to analysis for up to 96 samples with high clinical sensitivity and specificity.



NeoPlex offers less bench space, labor force, cost and TAT and ensures quality assurance with integrated results.

## Key Features

- Single-tube real-time PCR
- High inclusivity (including nvCT and NG porA mutant)
- Superior clinical performance
- Easy Procedures for user convenience
- Prevention of carry-over contamination with UDG system
- Whole Process control with extraction control
- Fast turnaround time (TAT) of less than 4 hours
- User Friendliness with NeoPlex™ Viewer

## Target Pathogens

- *Chlamydia trachomatis* (CT)
- *Neisseria gonorrhoeae* (NG)
- *Trichomonas vaginalis* (TV)
- *Mycoplasma hominis* (MH)
- *Mycoplasma genitalium* (MG)
- *Ureaplasma urealyticum* (UU)
- *Ureaplasma parvum* (UP)
- Herpes simplex virus type 1 (HSV-1)
- Herpes simplex virus type 2 (HSV-2)
- *Treponema pallidum* (TP)
- *Haemophilus ducreyi* (HD)
- *Candida albicans* (CA)
- *Gardnerella vaginalis* (GV)
- Group B *Streptococcus* (GBS)

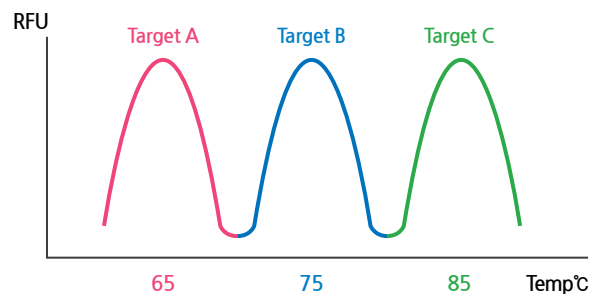
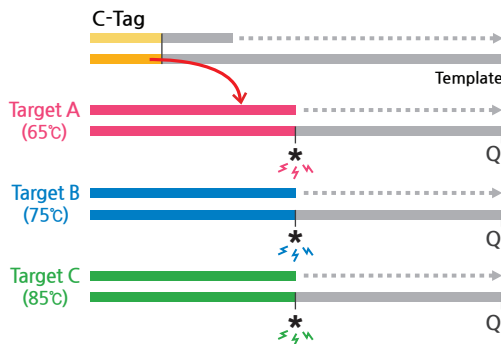
## Specimens

- Urine
- Vaginal swabs

## Compatible Instruments

- CFX96™ Real-Time PCR System (Bio-Rad)

## C-Tag™ Technology



C-Tag™ Technology overcomes the limitations of conventional real-time PCR by analyzing multiple pathogens simultaneously in a single-tube.

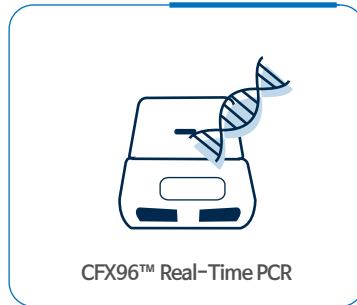
• Patent no. 10-2017-0049845 & PCT/KR2017/004297

## Simple and Fast Workflow

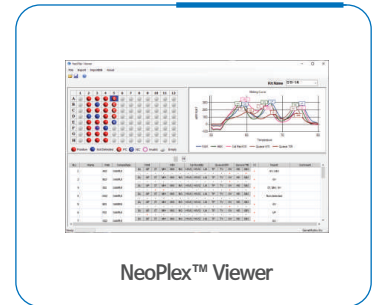
Automated Extraction / 1 hr **1**



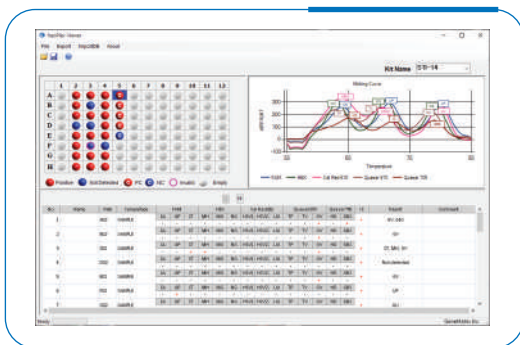
Real-Time PCR / 2 hr 30 min **2**



Data Analysis / 5 min **3**



## Easy Result Analysis

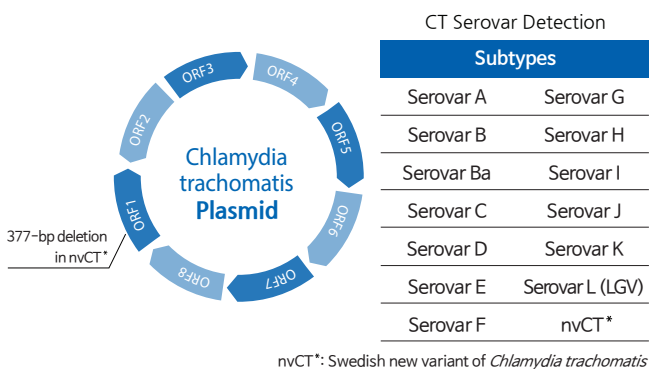


NeoPlex™ Viewer is an automatic analysis software for NeoPlex™ real-time PCR assays.

NeoPlex™ Viewer can:

- ✓ Analyze results from the melting curve
- ✓ Export analysis results in an Excel form
- ✓ Provide more convenient data sorting in the software result table

## High Inclusivity



- nvCT, one of *Chlamydia trachomatis* strains, has 377-bp deletion in the cryptic plasmid, causing false negatives in some NAATs.
- NeoPlex™ STI-14 can detect *Chlamydia trachomatis* serovars including nvCT.
- NeoPlex™ STI-14 can detect *Neisseria gonorrhoeae* strains including porA mutant strains.
- All targets are confirmed with Quality Control for Molecular Diagnostics (QCMD) panels.

## Superior Clinical Performance

Swab	CT	NG	Others
LoD (copies/rxn)	36.5	36.5	< 10 - 50
Sensitivity	99.2%	100%	98.6% - 100%
Specificity	100%	100%	100%

Urine	CT	NG	Others
LoD (copies/rxn)	26.5	36.5	< 10 - 50
Sensitivity	99.2%	99.4%	97.8% - 100%
Specificity	100%	100%	100%