

# beta Tubulin Loading Control Monoclonal Antibody (BT7R), DyLight 650

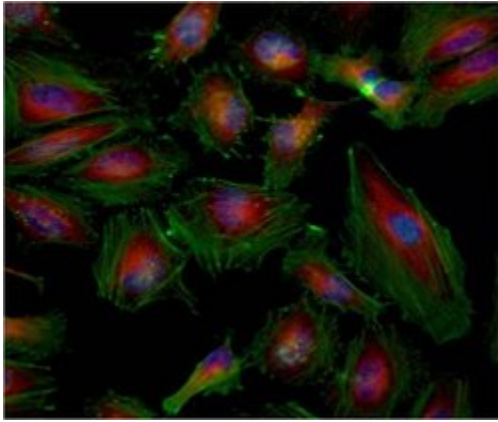
Product Details	
Size	50 µL
Species Reactivity	Chicken, Human, Mouse, Non-human primate, Rabbit, Rat
Host/Isotype	Mouse / IgG2a
Class	Monoclonal
Type	Antibody
Clone	BT7R
Conjugate	DyLight® 650
Immunogen	KLH conjugated peptide of the N-terminus of Beta-Tubulin.
Form	Liquid
Concentration	1 mg/mL
Purification	Protein A
Storage buffer	PBS with proprietary stabilizer
Contains	0.02% sodium azide
Storage conditions	4° C, do not freeze
RRID	AB_2537824

Applications	Tested Dilution	Publications
Immunocytochemistry (ICC/IF)	1:25-1:100	-

## Product Specific Information

MA5-16308-D650 has successfully been used for immunofluorescence. DyLight 650 has an excitation/emission of 652/672nm.

## Product Images For beta Tubulin Loading Control Monoclonal Antibody (BT7R), DyLight 650



**beta Tubulin Loading Control Antibody (MA5-16308-D650) in ICC/IF**  
Immunofluorescent analysis of Beta-Tubulin (red) in HeLa cells. Formalin fixed cells were permeabilized with 0.1% Triton X-100 in TBS for 10 minutes at room temperature and blocked with 1% Blocker BSA (Product # 37525) for 15 minutes at room temperature. Cells were probed with a DyLight 650-conjugated Beta-Tubulin monoclonal antibody (Product # MA5-16308-D650) at a dilution of 1:50 for at least 1 hour at room temperature. F-actin (green) was stained with DyLight 488 Phalloidin (Product # 21833) and nuclei (blue) were stained with Hoechst 33342 dye (Product # 62249). Images were taken on a Thermo Scientific ArrayScan or ToxInsight Instrument at 20X magnification.

For Research Use Only. Not for use in diagnostic procedures. Not for resale without express authorization. Products are warranted to operate or perform substantially in conformance with published Product specifications in effect at the time of sale, as set forth in the Production documentation, specifications and/or accompanying package inserts ("Documentation"). No claim of suitability for use in applications regulated by FDA is made. The warranty provided herein is valid only when used by properly trained individuals. Unless otherwise stated in the Documentation, this warranty is limited to one year from date of shipment when the Product is subjected to normal, proper and intended usage. This warranty does not extend to anyone other than the Buyer. Any model or sample furnished to Buyer is merely illustrative of the general type and quality of goods and does not represent that any Product will conform to such model or sample. NO OTHER WARRANTIES, EXPRESS OR IMPLIED, ARE GRANTED INCLUDING WITHOUT LIMITATION, IMPLIED WARRANTIES OF MERCHANTABILITY, FITNESS FOR ANY PARTICULAR PURPOSE, OR NON INFRINGEMENT. BUYER'S EXCLUSIVE REMEDY FOR NON-CONFORMING PRODUCTS DURING THE WARRANTY PERIOD IS LIMITED TO REPAIR, REPLACEMENT OF OR REFUND FOR THE NON-CONFORMING PRODUCT(S) AT SELLER'S SOLE OPTION. THERE IS NO OBLIGATION TO REPAIR, REPLACE OR REFUND FOR PRODUCTS AS THE RESULT OF (I) ACCIDENT, DISASTER OR EVENT OF FORCE MAJEURE, (II) MISUSE, FAULT OR NEGLIGENCE OF OR BY BUYER, (III) USE OF THE PRODUCTS IN A MANNER FOR WHICH THEY WERE NOT DESIGNED, OR (IV) IMPROPER STORAGE AND HANDLING OF THE PRODUCTS. Unless otherwise expressly stated on the Product or in the documentation accompanying the Product, the Product is intended for research only and is not to be used for any other purpose, including without limitation, unauthorized commercial uses, in vitro diagnostic uses, ex vivo or in vivo therapeutic uses, or any type of consumption by or application to human or animals.