

# Mouse IgG2b kappa Isotype Control (eBMG2b), Alexa Fluor 660, eBioscience™

## Product Details

Size	50 µg
Host/Isotype	Mouse / IgG2b, kappa
Class	Control
Type	Isotype Control
Clone	eBMG2b
Conjugate	Alexa Fluor® 660
Form	Liquid
Concentration	0.2 mg/mL
Purification	Affinity chromatography
Storage buffer	PBS, pH 7.2
Contains	0.09% sodium azide
Storage conditions	4° C, store in dark, DO NOT FREEZE!

Applications	Tested Dilution	Publications
Flow Cytometry (Flow)	Assay-Dependent	-
Control (Ctrl)	Assay-Dependent	-

## Product Specific Information

**Description:** The monoclonal mouse IgG2b kappa is useful as an isotype control immunoglobulin.

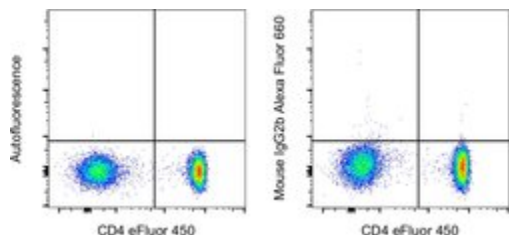
**Applications Reported:** This eBMG2b antibody has been reported for use in flow cytometric analysis.

**Applications Tested:** This eBMG2b antibody has been tested by flow cytometric analysis of mouse splenocytes and normal human peripheral blood cells and should be used at the same concentration as the experimental antibody.

Alexa Fluor 660 emits at 690 nm and is intended for use on spectral cytometers where it may be multiplexed with APC, Alexa Fluor 647 and Alexa Fluor 700.

Excitation: 662 nm; Emission: 690 nm; Laser: Red Laser

## Product Images For Mouse IgG2b kappa Isotype Control (eBMG2b), Alexa Fluor 660, eBioscience™



### Mouse IgG2b kappa Isotype Control (606-4732-81) in Flow

Normal human peripheral blood cells were stained with CD4 Monoclonal Antibody, eFluor 450 (Product # 48-0048-42) and staining buffer (autofluorescence) (left) or 0.125  $\mu$ g of Mouse IgG2b kappa Isotype Control, Alexa Fluor 660 (right). Viable cells in the lymphocyte gate were used for analysis, as determined by 7-AAD (Product # 00-6993-50). This data was collected on a 5-laser Cytex Aurora full spectral cytometer.

For Research Use Only. Not for use in diagnostic procedures. Not for resale without express authorization. Products are warranted to operate or perform substantially in conformance with published Product specifications in effect at the time of sale, as set forth in the Production documentation, specifications and/or accompanying package inserts ("Documentation"). No claim of suitability for use in applications regulated by FDA is made. The warranty provided herein is valid only when used by properly trained individuals. Unless otherwise stated in the Documentation, this warranty is limited to one year from date of shipment when the Product is subjected to normal, proper and intended usage. This warranty does not extend to anyone other than the Buyer. Any model or sample furnished to Buyer is merely illustrative of the general type and quality of goods and does not represent that any Product will conform to such model or sample. NO OTHER WARRANTIES, EXPRESS OR IMPLIED, ARE GRANTED INCLUDING WITHOUT LIMITATION, IMPLIED WARRANTIES OF MERCHANTABILITY, FITNESS FOR ANY PARTICULAR PURPOSE, OR NON INFRINGEMENT. BUYER'S EXCLUSIVE REMEDY FOR NON-CONFORMING PRODUCTS DURING THE WARRANTY PERIOD IS LIMITED TO REPAIR, REPLACEMENT OF OR REFUND FOR THE NON-CONFORMING PRODUCT(S) AT SELLER'S SOLE OPTION. THERE IS NO OBLIGATION TO REPAIR, REPLACE OR REFUND FOR PRODUCTS AS THE RESULT OF (I) ACCIDENT, DISASTER OR EVENT OF FORCE MAJEURE, (II) MISUSE, FAULT OR NEGLIGENCE OF OR BY BUYER, (III) USE OF THE PRODUCTS IN A MANNER FOR WHICH THEY WERE NOT DESIGNED, OR (IV) IMPROPER STORAGE AND HANDLING OF THE PRODUCTS. Unless otherwise expressly stated on the Product or in the documentation accompanying the Product, the Product is intended for research only and is not to be used for any other purpose, including without limitation, unauthorized commercial uses, in vitro diagnostic uses, ex vivo or in vivo therapeutic uses, or any type of consumption by or application to human or animals.