

Ki-67 Monoclonal Antibody (SolA15), eFluor 660, eBioscience™

Product Details	
Size	100 µg
Species Reactivity	Dog, Cynomolgus monkey, Human, Mouse, Non-human primate, Rat
Published Species	Rat, Mouse, Human
Host/Isotype	Rat / IgG2a, kappa
Recommended Isotype Control	Rat IgG2a kappa Isotype Control (eBR2a), eFluor 660, eBioscience™
Class	Monoclonal
Type	Antibody
Clone	SolA15
Conjugate	eFluor® 660
Form	Liquid
Concentration	0.2 mg/mL
Purification	Affinity chromatography
Storage buffer	PBS, pH 7.2, with 0.1% gelatin
Contains	0.09% sodium azide
Storage conditions	4° C, store in dark, DO NOT FREEZE!
RRID	AB_2574235

Applications	Tested Dilution	Publications
Western Blot (WB)	-	2 Publications
Immunohistochemistry (IHC)	Assay-Dependent	50 Publications
Immunohistochemistry (Paraffin) (IHC (P))	-	2 Publications
Immunocytochemistry (ICC/IF)	10 µg/mL	31 Publications
Flow Cytometry (Flow)	0.125 µg/test	51 Publications
Functional Assay (FN)	-	1 Publication

Product Specific Information

Description: The monoclonal antibody SolA15 recognizes mouse and rat Ki-67, a 300 kDa nuclear protein. Ki-67 is present during all active phases of the cell cycle (G1, S, G2, and mitosis), but is absent from resting cells (G0). Ki-67 is detected within the nucleus during interphase but redistributes to the chromosomes during mitosis. Ki-67 is used as a marker for determining the growth fraction of a given population of cells. In studies of tumor cells, the "Ki-67 labeling index" refers to the number of Ki-67 positive cells within the population and this is used to predict outcome of particular cancer types. Ki-67 has been shown to interact with the DNA-bound protein chromobox protein homolog 3 (CBX3) (heterochromatin).

The SolA15 antibody also recognizes human, non-human primate and canine Ki-67.

Applications Reported: This SolA15 antibody has been reported for use in intracellular staining followed by flow cytometric analysis, immunohistochemical staining, and immunocytochemistry.

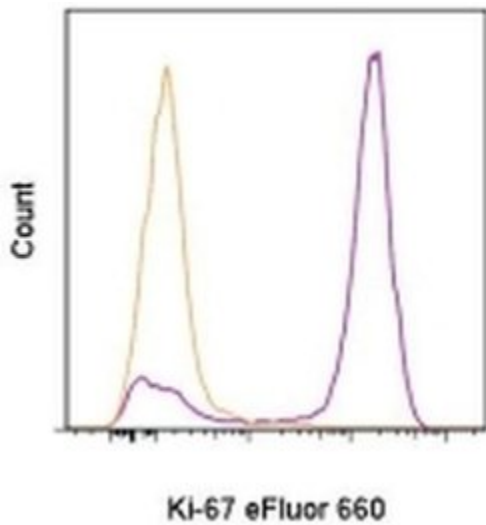
Applications Tested: This SolA15 antibody has been tested by intracellular staining and flow cytometric analysis of stimulated mouse splenocytes using the Foxp3/Transcription Factor Buffer Set (cat. 00-5523) and protocol. This can be used at less than or equal to 0.125 µg per test. A test is defined as the amount (µg) of antibody that will stain a cell sample in a final volume of 100 µL. Cell number should be determined empirically but can range from 10⁵ to 10⁸ cells/test. This SolA15 antibody has also been tested by immunocytochemistry on fixed and permeabilized C2C12 cells at less than or equal to 10 µg/mL. It is recommended that the antibody be carefully titrated for optimal performance in the assay of interest.

eFluor® 660 is a replacement for Alexa Fluor® 647. eFluor® 660 emits at 659 nm and is excited with the red laser (633 nm). Please make sure that your instrument is capable of detecting this fluorochrome.

Excitation: 633-647 nm; Emission: 668 nm; Laser: Red Laser.

Filtration: 0.2 µm post-manufacturing filtered.

Product Images For Ki-67 Monoclonal Antibody (SolA15), eFluor 660, eBioscience™



Ki-67 Antibody (50-5698-82) in Flow

C57Bl/6 splenocytes were unstimulated (orange histogram) or stimulated for 2 days with plate-bound Anti-Mouse CD3e Functional Grade Purified (Product # 16-0031-82) (purple histogram). Cells were then fixed and permeabilized using the Foxp3 /Transcription Factor Buffer Set (Product # 00-5523-00) and stained intracellularly with 0.06 µg of Anti-Mouse/Rat Ki-67 eFluor® 660.

[View more figures on thermofisher.com](https://www.thermofisher.com)

Western Blot (2)

Cancer cell

Intraclonal Plasticity in Mammary Tumors Revealed through Large-Scale Single-Cell Resolution 3D Imaging.

"50-5698 was used in Western Blotting to develop a 3D imaging protocol based on a rapid clearing agent termed FUnGI that enables large-scale imaging of intact solid tumors."

Authors: Rios AC, Capaldo BD, Vaillant F, Pal B, van Ineveld R, Dawson CA, Chen Y, Nolan E, Fu NY, Jackling FC, Devi S, Clouston D, Whitehead L, Smyth GK, Mueller SN, Lindeman GJ, Visvader JE

Species
Human

Dilution
Not Cited

Year
2019

eLife

The cell proliferation antigen Ki-67 organises heterochromatin.

"Published figure using Ki-67 monoclonal antibody (Product # 50-5698-82) in Immunohistochemistry"

Authors: Sobacki M, Mrouj K, Camasses A, Parisi N, Nicolas E, Lières D, Gerbe F, Prieto S, Krasinska L, David A, Eguren M, Birling MC, Urbach S, Hem S, Déjardin J, Malumbres M, Jay P, Dulic V, Lafontaine DLj, Feil R, Fisher D

Species
Human
Mouse

Dilution
Not Cited
Not Cited

Year
2016

Immunohistochemistry (50)

JCI insight

Delta-like 4 is required for pulmonary vascular arborization and alveolarization in the developing lung.

"Published figure using Ki-67 monoclonal antibody (Product # 50-5698-82) in Immunohistochemistry"

Authors: Xia S, Menden HL, Townley N, Mabry SM, Johnston J, Nyp MF, Heruth DP, Korfhagen T, Sampath V

Species
Not Applicable

Dilution
Not Cited

Year
2021

Life science alliance

CDCP1 promotes compensatory renal growth by integrating Src and Met signaling.

"Published figure using Ki-67 monoclonal antibody (Product # 50-5698-82) in Immunohistochemistry"

Authors: Kajiwara K, Yamano S, Aoki K, Okuzaki D, Matsumoto K, Okada M

Species
Not Applicable

Dilution
Not Cited

Year
2021

[View more IHC references on thermofisher.com](https://thermofisher.com)

More applications with references on thermofisher.com

IHC (P) (2)

ICC/IF (31)

Flow (51)

FN (1)

For Research Use Only. Not for use in diagnostic procedures. Not for resale without express authorization. Products are warranted to operate or perform substantially in conformance with published Product specifications in effect at the time of sale, as set forth in the Production documentation, specifications and/or accompanying package inserts ("Documentation"). No claim of suitability for use in applications regulated by FDA is made. The warranty provided herein is valid only when used by properly trained individuals. Unless otherwise stated in the Documentation, this warranty is limited to one year from date of shipment when the Product is subjected to normal, proper and intended usage. This warranty does not extend to anyone other than the Buyer. Any model or sample furnished to Buyer is merely illustrative of the general type and quality of goods and does not represent that any Product will conform to such model or sample. NO OTHER WARRANTIES, EXPRESS OR IMPLIED, ARE GRANTED INCLUDING WITHOUT LIMITATION, IMPLIED WARRANTIES OF MERCHANTABILITY, FITNESS FOR ANY PARTICULAR PURPOSE, OR NON INFRINGEMENT. BUYER'S EXCLUSIVE REMEDY FOR NON-CONFORMING PRODUCTS DURING THE WARRANTY PERIOD IS LIMITED TO REPAIR, REPLACEMENT OF OR REFUND FOR THE NON-CONFORMING PRODUCT(S) AT SELLER'S SOLE OPTION. THERE IS NO OBLIGATION TO REPAIR, REPLACE OR REFUND FOR PRODUCTS AS THE RESULT OF (I) ACCIDENT, DISASTER OR EVENT OF FORCE MAJEURE, (II) MISUSE, FAULT OR NEGLIGENCE OF OR BY BUYER, (III) USE OF THE PRODUCTS IN A MANNER FOR WHICH THEY WERE NOT DESIGNED, OR (IV) IMPROPER STORAGE AND HANDLING OF THE PRODUCTS. Unless otherwise expressly stated on the Product or in the documentation accompanying the Product, the Product is intended for research only and is not to be used for any other purpose, including without limitation, unauthorized commercial uses, in vitro diagnostic uses, ex vivo or in vivo therapeutic uses, or any type of consumption by or application to human or animals.