

Mouse IgG2a kappa Isotype Control (eBM2a), APC-eFluor™ 780, eBioscience™

Product Details	
Size	50 µg
Host/Isotype	Mouse / IgG2a, kappa
Class	Control
Type	Isotype Control
Clone	eBM2a
Conjugate	APC-eFluor™ 780
Form	Liquid
Concentration	0.2 mg/mL
Purification	Affinity chromatography
Storage buffer	PBS, pH 7.2
Contains	0.09% sodium azide
Storage conditions	4° C, store in dark, DO NOT FREEZE!
RRID	AB_2784707

Applications	Tested Dilution	Publications
Flow Cytometry (Flow)	Assay-Dependent	-
Control (Ctrl)	Assay-Dependent	-

Product Specific Information

Description: This is a monoclonal mouse IgG2a antibody. It is used as an isotype control for mouse IgG2a antibodies.

Applications Reported: This eBM2a antibody has been reported for use in flow cytometric analysis.

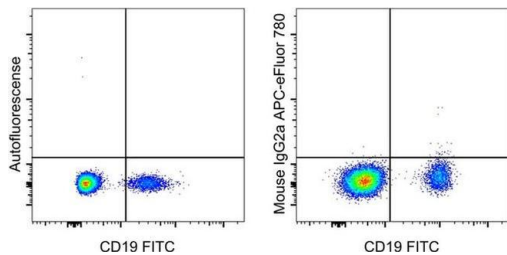
Applications Tested: This eBM2a antibody has been tested by flow cytometric analysis of normal human peripheral blood cells. Use isotype control at the same concentration as experimental antibody.

APC-eFluor 780 emits at 780 nm and is excited with the Red laser (633-647 nm). Please make sure that your instrument is capable of detecting this fluorochrome.

Light sensitivity: This tandem dye is sensitive to photo-induced oxidation. Please protect this vial and stained samples from light.

Fixation: Samples can be stored in IC Fixation Buffer (Product # 00-8222-49) (100 µL of cell sample + 100 µL of IC Fixation Buffer) or 1-step Fix/Lyse Solution (Product # 00-5333-57) for up to 3 days in the dark at 4°C with minimal impact on brightness and FRET efficiency/compensation. Some generalizations regarding fluorophore performance after fixation can be made, but clone specific performance should be determined empirically.

Excitation: 633-647 nm; **Emission:** 780 nm; **Laser:** Red Laser



Mouse IgG2a kappa Isotype Control (47-4724-81) in Flow

Staining of human peripheral blood cells with CD19 Monoclonal Antibody, FITC (Product # 11-0199-42) and staining buffer (autofluorescence, left) or 0.25 µg of Mouse IgG2a kappa Isotype Control, APC-eFluor 780 (right). Total viable cells were used for analysis.

For Research Use Only. Not for use in diagnostic procedures. Not for resale without express authorization. Products are warranted to operate or perform substantially in conformance with published Product specifications in effect at the time of sale, as set forth in the Production documentation, specifications and/or accompanying package inserts ("Documentation"). No claim of suitability for use in applications regulated by FDA is made. The warranty provided herein is valid only when used by properly trained individuals. Unless otherwise stated in the Documentation, this warranty is limited to one year from date of shipment when the Product is subjected to normal, proper and intended usage. This warranty does not extend to anyone other than the Buyer. Any model or sample furnished to Buyer is merely illustrative of the general type and quality of goods and does not represent that any Product will conform to such model or sample. NO OTHER WARRANTIES, EXPRESS OR IMPLIED, ARE GRANTED INCLUDING WITHOUT LIMITATION, IMPLIED WARRANTIES OF MERCHANTABILITY, FITNESS FOR ANY PARTICULAR PURPOSE, OR NON INFRINGEMENT. BUYER'S EXCLUSIVE REMEDY FOR NON-CONFORMING PRODUCTS DURING THE WARRANTY PERIOD IS LIMITED TO REPAIR, REPLACEMENT OF OR REFUND FOR THE NON-CONFORMING PRODUCT(S) AT SELLER'S SOLE OPTION. THERE IS NO OBLIGATION TO REPAIR, REPLACE OR REFUND FOR PRODUCTS AS THE RESULT OF (I) ACCIDENT, DISASTER OR EVENT OF FORCE MAJEURE, (II) MISUSE, FAULT OR NEGLIGENCE OF OR BY BUYER, (III) USE OF THE PRODUCTS IN A MANNER FOR WHICH THEY WERE NOT DESIGNED, OR (IV) IMPROPER STORAGE AND HANDLING OF THE PRODUCTS. Unless otherwise expressly stated on the Product or in the documentation accompanying the Product, the Product is intended for research only and is not to be used for any other purpose, including without limitation, unauthorized commercial uses, in vitro diagnostic uses, ex vivo or in vivo therapeutic uses, or any type of consumption by or application to human or animals.