

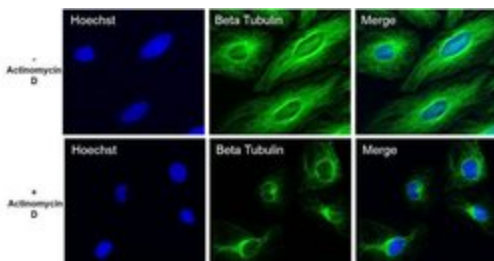
# beta Tubulin Loading Control Monoclonal Antibody (BT7R)

## Product Details

Size	100 µg
Species Reactivity	Dog, Chicken, Human, Mouse, Non-human primate, Rabbit, Rat
Published Species	Avian, Rat, C. elegans, Fruit fly, Mouse, Human, Chicken
Host/Isotype	Mouse / IgG2a
Class	Monoclonal
Type	Antibody
Clone	BT7R
Conjugate	Unconjugated
Immunogen	KLH conjugated peptide of the N-terminus of Beta-Tubulin.
Form	Liquid
Concentration	1 mg/mL
Purification	Protein A
Storage buffer	PBS, pH 7.2
Contains	no preservative
Storage conditions	-20° C, Avoid Freeze/Thaw Cycles
RRID	AB_2537819

Applications	Tested Dilution	Publications
Western Blot (WB)	1:2,000-1:5,000	54 Publications
Immunohistochemistry (IHC)	-	1 Publication
Immunohistochemistry (Paraffin) (IHC (P))	1:10-1:500	-
Immunocytochemistry (ICC/IF)	1:50-1:500	1 Publication
Flow Cytometry (Flow)	1 µg/test	-
ELISA (ELISA)	Assay-dependent	-
In vitro Assay (IV)	-	1 Publication

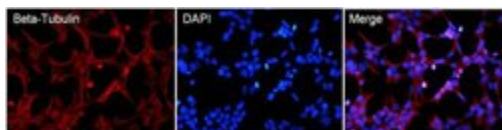
## Advanced Verification Data



### beta Tubulin Loading Control Antibody (MA5-16308)

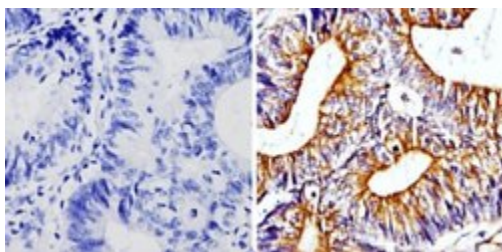
The specificity of anti-Beta-Tubulin mouse monoclonal antibody (Product # MA5-16308) was demonstrated by the immunofluorescence detection of the disruption of microtubules in HeLa cells upon treatment with Actinomycin D (bottom panel) compared to untreated cells (upper panel). Cell treatment validation info.

## Product Images For beta Tubulin Loading Control Monoclonal Antibody (BT7R)



### beta Tubulin Loading Control Antibody (MA5-16308) in ICC/IF

Immunofluorescent analysis of Beta-Tubulin (red) in HEK293T cells. Cells fixed in 4% formaldehyde were permeabilized and blocked with 1X PBS containing 5% BSA and 0.3% Triton X-100 for 1 hour at room temperature. Cells were probed with a Beta-Tubulin monoclonal antibody (Product # MA5-16308) at a dilution of 1:100 overnight at 4°C in 1X PBS containing 1% BSA and 0.3% Triton X-100, washed with 1X PBS, and incubated with a fluorophore-conjugated goat anti-mouse IgG secondary antibody at a dilution of 1:200 for 1 hour at room temperature. Nuclei (blue) were stained with DAPI. Images were taken on a Leica DM1000 microscope at 40X magnification. Data courtesy of the Innovators Program.



### beta Tubulin Loading Control Antibody (MA5-16308) in IHC (P)

Immunohistochemistry analysis of Beta-Tubulin showing staining in the cytoskeleton of paraffin-embedded human colon carcinoma (right) compared with a negative control without primary antibody (left). To expose target proteins, antigen retrieval was performed using 10mM sodium citrate (pH 6.0), microwaved for 8-15 min. Following antigen retrieval, tissues were blocked in 3% H<sub>2</sub>O<sub>2</sub>-methanol for 15 min at room temperature, washed with ddH<sub>2</sub>O and PBS, and then probed with a Beta-Tubulin loading control antibody (Product # MA5-16308) diluted in 3% BSA-PBS at a dilution of 1:100 overnight at 4°C in a humidified chamber. Tissues were washed extensively in PBST and detection was performed using an HRP-conjugated secondary antibody followed by colorimetric detection using a DAB kit. Tissues were counterstained with hematoxylin and dehydrated with ethanol and xylene to prep for mounting.

[View more figures on thermofisher.com](https://www.thermofisher.com)

## Western Blot (54)

ASN neuro

### Melatonin Reduces GSK3-Mediated Tau Phosphorylation, Enhances Nrf2 Nuclear Translocation and Anti-Inflammation.

"MA5-16308 was used in Western Blotting to check the neuroprotective function of Melatonin by MTT and LDH assay, where Melatonin inhibited the Tau aggregates-mediated cytotoxicity and membrane leakage in Neuro2A cells."

Authors: Das R,Balmik AA,Chinnathambi S

**Species**  
Mouse

**Dilution**  
1:5000

**Year**  
2021

Frontiers in immunology

### Hypoxia Promotes Syndecan-3 Expression in the Tumor Microenvironment.

"MA5-16308 was used in Western Blotting to investigate the expression of syndecan-3 in several cancer types and the role of hypoxia in this."

Authors: Prieto-Fernández E,Egia-Mendikute L,Bosch A,García Del Río A,Jimenez-Lasheras B,Antoñana-Vildosola A, Lee SY,Palazon A

**Species**  
Mouse

**Dilution**  
1:5000

**Year**  
2021

[View more WB references on thermofisher.com](#)

## Immunohistochemistry (1)

Veterinary research

### Precision cut lung slices: a novel versatile tool to examine host-pathogen interaction in the chicken lung.

"MA5-16308 was used in Immunohistochemistry to prepare precision-cut lung slices (PCLS) from immunologically mature chicken lungs, test different culture conditions, and find that serum supplementation has a detrimental effect on the quality of PCLS."

Authors: Bryson KJ,Garrido D,Esposito M,McLachlan G,Digard P,Schouler C,Guabiraba R,Trapp S,Vervelde L

**Species**  
Chicken

**Dilution**  
Not Cited

**Year**  
2020

## Immunocytochemistry (1)

Frontiers in aging neuroscience

### Inhibition of PirB Activity by TAT-PEP Improves Mouse Motor Ability and Cognitive Behavior.

"Published figure using beta Tubulin Loading Control monoclonal antibody (Product # MA5-16308) in Immunofluorescence"

Authors: Mi YJ,Chen H,Guo N,Sun MY,Zhao ZH,Gao XC,Wang XL,Zhang RS,Zhou JB,Gou XC

**Species**  
Human  
Rat

**Dilution**  
1:200  
1:200

**Year**  
2020

## More applications with references on thermofisher.com

## IV (1)

For Research Use Only. Not for use in diagnostic procedures. Not for resale without express authorization. Products are warranted to operate or perform substantially in conformance with published Product specifications in effect at the time of sale, as set forth in the Production documentation, specifications and/or accompanying package inserts ("Documentation"). No claim of suitability for use in applications regulated by FDA is made. The warranty provided herein is valid only when used by properly trained individuals. Unless otherwise stated in the Documentation, this warranty is limited to one year from date of shipment when the Product is subjected to normal, proper and intended usage. This warranty does not extend to anyone other than the Buyer. Any model or sample furnished to Buyer is merely illustrative of the general type and quality of goods and does not represent that any Product will conform to such model or sample. NO OTHER WARRANTIES, EXPRESS OR IMPLIED, ARE GRANTED INCLUDING WITHOUT LIMITATION, IMPLIED WARRANTIES OF MERCHANTABILITY, FITNESS FOR ANY PARTICULAR PURPOSE, OR NON INFRINGEMENT. BUYER'S EXCLUSIVE REMEDY FOR NON-CONFORMING PRODUCTS DURING THE WARRANTY PERIOD IS LIMITED TO REPAIR, REPLACEMENT OF OR REFUND FOR THE NON-CONFORMING PRODUCT(S) AT SELLER'S SOLE OPTION. THERE IS NO OBLIGATION TO REPAIR, REPLACE OR REFUND FOR PRODUCTS AS THE RESULT OF (I) ACCIDENT, DISASTER OR EVENT OF FORCE MAJEURE, (II) MISUSE, FAULT OR NEGLIGENCE OF OR BY BUYER, (III) USE OF THE PRODUCTS IN A MANNER FOR WHICH THEY WERE NOT DESIGNED, OR (IV) IMPROPER STORAGE AND HANDLING OF THE PRODUCTS. Unless otherwise expressly stated on the Product or in the documentation accompanying the Product, the Product is intended for research only and is not to be used for any other purpose, including without limitation, unauthorized commercial uses, in vitro diagnostic uses, ex vivo or in vivo therapeutic uses, or any type of consumption by or application to human or animals.