

Monkey IL-8 Instant ELISA

Enzyme-linked Immunosorbent Assay for quantitative detection of monkey IL-8

Catalog Number BMS640-3INST (128 tests)

Pub. No. MAN0018163 **Rev.** A.0 (30)

WARNING! Read the Safety Data Sheets (SDSs) and follow the handling instructions. Wear appropriate protective eyewear, clothing, and gloves. Safety Data Sheets (SDSs) are available from thermofisher.com/support.

Product description

The monkey IL-8 Instant ELISA is an enzyme-linked immunosorbent assay for the quantitative detection of monkey IL-8 levels in cell culture supernatants, monkey serum, plasma, amniotic, or other body fluids.

Summary

Interleukin-8/Neutrophil-Activating Peptide-1 selectively stimulates the ability of neutrophils and T-lymphocytes to invade injured or inflamed tissue. Exogenous stimuli like LPS, but also IL-1, TNF- α and TNF- β induce the secretion of IL-8 in a variety of different cell types including monocytes, endothelial and epithelial cells, peripheral blood mononuclear cells, dermal fibroblasts, keratinocytes, neutrophils, hepatocytes, synovial cells, and T-lymphocytes. When IL-8 was subcutaneously injected into rats, both lymphocytes and neutrophils migrated to the site of injection within 3 hours. At lower dosages, only lymphocytes migrated towards the site of injection, while at higher dosages primarily neutrophils were attracted. It was found that T-lymphocytes are 10 times more sensitive to IL-8 than neutrophils. IL-8 exerts its effects via specific cell membrane receptors (chemotactic agonist receptor-family) with homogeneous high-affinity activity and two binding sites for its ligand. The receptor density is determined by the cell type and ranges from 300 on T-lymphocytes up to 20,000 on neutrophils. After binding of IL-8, the receptor expression is downregulated >90 % within 10 minutes at 37°C, together with the internalization of the ligand. IL-8 is proteolytically degraded in the cytoplasm and released into the culture medium as soluble fragments. The IL-8 receptors are probably recycled. Besides its chemotactic influence, IL-8 exerts other distinct characteristics. In neutrophils it triggers the secretion of superoxide anions and lysosomal enzymes, thereby indirectly augmenting the permeability of blood vessels, and IL-8 enhances the fungicidal activity against *Candida albicans*. Neutrophils are more readily liberated from the bone marrow reservoir under the influence of this cytokine. In vitro, IL-8 stimulates a rapid Mac-1 as well as CR 1, p150,95 and LFA-1 expression on neutrophils which enables the adherence to activated vascular endothelial cells expressing e.g. ICAM-1. This may account for the accumulation of neutrophils at IL-8 injection sites. Other findings suggest that endothelial-derived IL-8 may function to attenuate inflammatory events at the interface between vessel wall and blood, via inhibiting neutrophil adhesion to cytokine-activated endothelial monolayers. Therefore these cells seem to be protected against neutrophil-mediated damage. In basophils, besides its chemotactic effects, IL-8 stimulates the histamin liberation.

For literature update refer to our website.

Principles of the test

An anti-monkey IL-8 monoclonal coating antibody is adsorbed onto microwells. Monkey IL-8 present in the sample or standard binds to antibodies adsorbed to the microwells; a biotin-conjugated polyclonal anti-monkey IL-8 antibody binds to monkey IL-8 captured by the first antibody. Streptavidin-HRP binds to the biotin conjugated anti-monkey IL-8.

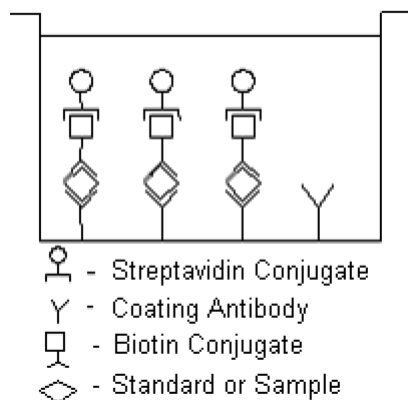


Fig. 1 First incubation

Following incubation unbound biotin conjugated anti monkey IL-8 and Streptavidin-HRP is removed during a wash step, and substrate solution reactive with HRP is added to the wells.

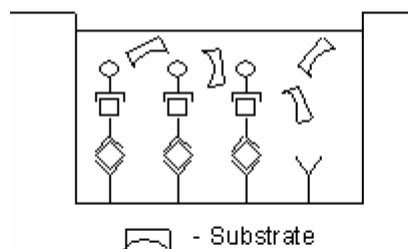


Fig. 2 Second incubation

A colored product is formed in proportion to the amount of soluble monkey IL-8 present in the sample. The reaction is terminated by addition of acid and absorbance is measured at 450 nm. A standard curve is prepared from seven monkey IL-8 standard dilutions and monkey IL-8 sample concentration determined.

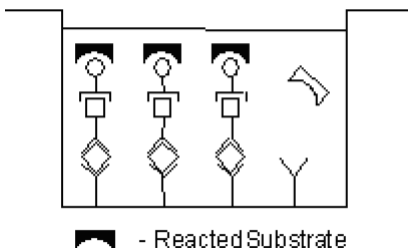


Fig. 3 Stop reaction

Reagents provided

1 aluminium pouch with a Microwell Plate (12 strips of 8 wells each) coated with Monoclonal Antibody (murine) to monkey IL-8, Biotin-Conjugate (anti-IL-8 polyclonal antibody), Streptavidin-HRP and Sample Diluent, lyophilized

2 aluminium pouches with a monkey IL-8 Standard curve (colored)

1 bottle (25 mL) Wash Buffer Concentrate 20x (phosphate-buffered saline with 1% Tween™ 20)

1 vial (15 mL) Substrate Solution (tetramethyl-benzidine)

1 vial (12 mL) Sample Diluent (Use when an external predilution of the samples is needed)

1 vial (15 mL) Stop Solution (1M Phosphoric acid)

2 adhesive Plate Covers

Storage instructions

Store ELISA plate and Standard curves or whole kit at -20°C. The plate and the standard curves can also be removed, stored at -20°C, remaining kit reagents can be stored between 2°C and 8°C. Expiry of the kit and reagents is stated on labels.

The expiry of the kit components can only be guaranteed if the components are stored properly, and if, in case of repeated use of one component, the reagent is not contaminated by the first handling.

Sample collection

Cell culture supernatants, monkey serum, plasma and amniotic fluid were tested with this assay. Other biological samples might be suitable for use in the assay. Remove the serum or plasma from the clot or red cells as soon as possible after clotting and separation.

Samples containing a visible precipitate must be clarified prior to use in the assay. Do not use grossly hemolyzed or lipemic specimens.

Samples must be stored frozen at -20°C to avoid loss of bioactive monkey IL-8. If samples are to be run within 24 hours, they may be stored at 2°C to 8°C (for sample stability refer to "Performance characteristics" on page 4).

Avoid repeated freeze-thaw cycles. Prior to assay, frozen serum or plasma should be brought to room temperature slowly and mixed gently.

Materials required but not provided

- 5 mL and 10 mL graduated pipettes
- 5 µL to 1000 µL adjustable single channel micropipettes with disposable tips
- 50 µL to 300 µL adjustable multichannel micropipette with disposable tips
- Multichannel micropipette reservoir
- Beakers, flasks, cylinders necessary for preparation of reagents
- Device for delivery of wash solution (multichannel wash bottle or automatic wash system)
- Microwell strip reader capable of reading at 450 nm (620 nm as optional reference wave length)
- Glass-distilled or deionized water
- Statistical calculator with program to perform linear regression analysis

Precautions for use

- All chemicals should be considered as potentially hazardous. We therefore recommend that this product is handled only by those persons who have been trained in laboratory techniques and that it is used in accordance with the principles of good laboratory practice. Wear suitable protective clothing such as laboratory overalls, safety glasses and gloves. Care should be taken to avoid contact with skin or eyes. In the case of contact with skin or eyes wash immediately with water. See material safety data sheet(s) and/or safety statements(s) for specific advice.
- Reagents are intended for research use only and are not for use in diagnostic or therapeutic procedures.

- Do not mix or substitute reagents with those from other lots or other sources.
- Do not use kit reagents beyond expiration date on label.
- Do not expose kit reagents to strong light during storage or incubation.
- Do not pipette by mouth.
- Do not eat or smoke in areas where kit reagents or samples are handled.
- Avoid contact of skin or mucous membranes with kit reagents or specimens.
- Rubber or disposable latex gloves should be worn while handling kit reagents or specimens.
- Avoid contact of substrate solution with oxidizing agents and metal.
- Avoid splashing or generation of aerosols.
- In order to avoid microbial contamination or cross-contamination of reagents or specimens which may invalidate the test use disposable pipette tips and/or pipettes.
- Use clean, dedicated reagent trays for dispensing substrate reagent.
- Glass-distilled water or deionized water must be used for reagent preparation.
- Substrate solution must be at room temperature prior to use.
- Decontaminate and dispose specimens and all potentially contaminated materials as they could contain infectious agents. The preferred method of decontamination is autoclaving for a minimum of 1 hour at 121.5°C.
- Liquid wastes not containing acid and neutralized waste may be mixed with sodium hypochlorite in volumes such that the final mixture contains 1.0% sodium hypochlorite. Allow 30 minutes for effective decontamination. Liquid waste containing acid must be neutralized prior to the addition of sodium hypochlorite.

Preparation of reagents and samples

1. Buffer concentrate should be brought to room temperature and diluted before starting the test procedure.
2. If crystals have formed in the buffer concentrate, warm it gently until crystals have completely dissolved.

Wash buffer (1x)

1. Pour entire contents (25 mL) of the Wash Buffer Concentrate (20x) into a clean 500 mL graduated cylinder. Bring to final volume to 500 mL with glass-distilled or deionized water. Mix gently to avoid foaming.
2. Transfer to a clean wash bottle and store at 2°C to 25°C. Please note that Wash Buffer (1x) is stable for 30 days.

Test protocol

Note:

- Use plate immediately after removal from -20°C!
- Do not wait until pellets have completely dissolved before applying samples - the binding reaction in the standard strips starts immediately after addition of water!
- Do not try to dissolve pellets by pipetting up and down in the wells - some parts of the pellet could stick to the tip creating high variation of results
- Perform the washing step with at least 400 µL of washing buffer as stated in the manual or fill the wells completely - otherwise any pellet residues sticking to the rim of the well will not be removed and create high variation of results
- Allow the washing buffer to sit in the wells for a few seconds before aspiration
- Remove covers of the standard strips carefully in order that all the lyophilised pellets remain in the wells

- Determine the number of microwell Strips required to test the desired number of samples plus microwell Strips for blanks and standards (colored). Each sample, standard, blank, and optional control sample should be assayed in duplicate. Remove extra microwell Strips from holder and store in foil bag with the desiccant provided at -20°C sealed tightly. Place microwell strips containing the standard curve in position A1/A2 to H1/H2 (see Table 1).

Table 1 Example of the arrangement of blanks, standards and samples in the microwell strips.

	1	2	3	4
A	Standard 1 1250.0 U/mL	Standard 1 1250.0 U/mL	Sample 1	Sample 1
B	Standard 2 625.0 U/mL	Standard 2 625.0 U/mL	Sample 2	Sample 2
C	Standard 3 313.0 U/mL	Standard 3 313.0 U/mL	Sample 3	Sample 3
D	Standard 4 156.0 U/mL	Standard 4 156.0 U/mL	Sample 4	Sample 4
E	Standard 5 78.0 U/mL	Standard 5 78.0 U/mL	Sample 5	Sample 5
F	Standard 6 39.0 U/mL	Standard 6 39.0 U/mL	Sample 6	Sample 6
G	Standard 7 19.0 U/mL	Standard 7 19.0 U/mL	Sample 7	Sample 7
H	Blank	Blank	Sample 8	Sample 8

- Add distilled water to all standard and blank wells as indicated on the label of the standard strips (A1/A2 to H1/H2).
- Add 100 µL of distilled water to the sample wells.
- Add 50 µL of each Sample, in duplicate, to the designated wells and mix the contents.
- Cover with a Plate Cover and incubate at room temperature (18°C to 25°C) for 3 hours on a microplate shaker.
- Remove Plate Cover and empty wells. Wash the microwell strips 6 times with approximately 400 µL Wash Buffer per well with thorough aspiration of microwell contents between washes. Take care not to scratch the surface of the microwells.
- Pipette 100 µL of TMB Substrate Solution to all wells, including the blank wells.
- Incubate the microwell strips at room temperature (18°C to 25°C) for about 10 minutes. Avoid direct exposure to intense light.

The color development on the plate should be monitored and the substrate reaction stopped (see next point of this protocol) before positive wells are no longer properly recordable. Determination of the ideal time period for color development has to be done individually for each assay.

It is recommended to add the stop solution when the highest standard has developed a dark blue color. The color development can be monitored by the ELISA reader at 620 nm. The substrate reaction should be stopped as soon as Standard 1 has reached an OD of 0.9 – 0.95.

- Stop the enzyme reaction by quickly pipetting 100 µL of Stop Solution into each well, including the blank wells. It is important that the Stop Solution is spread quickly and uniformly throughout the microwells to completely inactivate the enzyme. Results must be read immediately after the Stop Solution is added or within one hour if the microwell strips are stored at 2°C to 8°C in the dark.
- Read absorbance of each microwell on a spectro-photometer using 450 nm as the primary wave length (optionally 620 nm as the reference wave length; 610 nm to 650 nm is acceptable). Blank the plate reader according to the manufacturer's instructions by using the blank wells. Determine the absorbance of both the samples and the monkey IL-8 standards.

Note: In case of incubation without shaking the obtained O.D. values may be lower than indicated below. Nevertheless the results are still valid.

Calculation of results

- Calculate the average absorbance values for each set of duplicate standards and samples. Duplicates should be within 20% of the mean.
- Create a standard curve by plotting the mean absorbance for each standard concentration on the ordinate against the monkey IL-8 concentration on the abscissa. Draw a best fit curve through the points of the graph.
- To determine the concentration of circulating monkey IL-8 for each sample, first find the mean absorbance value on the ordinate and extend a horizontal line to the standard curve. At the point of intersection, extend a vertical line to the abscissa and read the corresponding monkey IL-8 concentration.
- Samples have been diluted 1:2, thus the concentration read from the standard curve must be multiplied by the dilution factor (x 2).

Note: There is a common dilution factor for samples due to the conjugate which must then be included in the calculation. The samples contribute 100 µL to the final volume per well. These 100 µL are composed of 50 µL of sample diluent plus 50 µL of the sample. This is a 1:2 dilution.

The remaining 50 µL to give 150 µL are due to the addition of 50 µL conjugate to all wells.

50 µL sample diluent and 50 µL conjugate results in 100 µL reconstitution volume, addition of 50 µL sample (50 µL + 50 µL = 1:2 dilution)

- Calculation of samples with a concentration exceeding standard 1 may result in incorrect, low monkey IL-8 levels. Such samples require further external predilution according to expected monkey IL-8 values with Sample Diluent in order to precisely quantitate the actual monkey IL-8 level.
- It is suggested that each testing facility establishes a control sample of known monkey IL-8 concentration and runs this additional control with each assay. If the values obtained are not within the expected range of the control, the assay results may be invalid.

- A representative standard curve is shown in Figure 4. This curve cannot be used to derive test results. Every laboratory must prepare a standard curve for each group of microwell strips assayed.

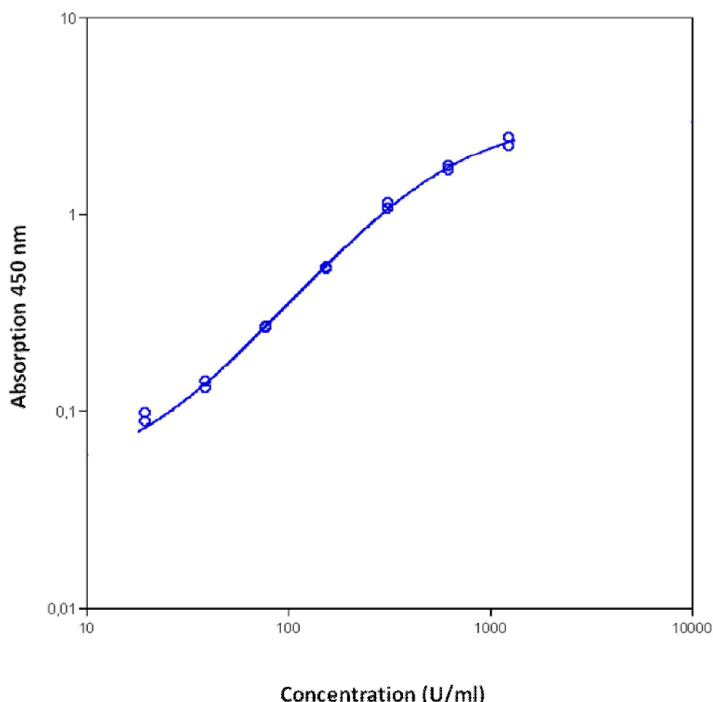


Fig. 4 Representative standard curve for monkey IL-8 Instant ELISA. Monkey IL-8 was diluted in serial 2-fold steps in Sample Diluent, each symbol represents the mean of 3 parallel titrations. Do not use this standard curve to derive test results. A standard curve must be run for each group of microwell strips assayed.

Table 2 Typical data using the monkey IL-8 Instant ELISA

Measuring wavelength: 450 nm

Reference wavelength: 620 nm

Standard	monkey IL-8 Concentration (U/mL)	O.D. (450 nm)	O.D. Mean	C.V. (%)
1	1250.0	2.212 2.458	2.335	5.3
2	625.0	1.746 1.656	1.701	2.6
3	313.0	1.065 1.123	1.094	2.7
4	156.0	0.528 0.536	0.532	0.8
5	78.0	0.267 0.265	0.266	0.4
6	39.0	0.141 0.129	0.135	4.4
7	19.0	0.098 0.088	0.093	5.4
Blank	0.0	0.036 0.034	0.035	2.9

The OD values of the standard curve may vary according to the conditions of assay performance (e.g. operator, pipetting technique, washing technique or temperature effects). Furthermore shelf life of the kit may affect enzymatic activity and thus color intensity. Values measured are still valid.

Limitations

- Since exact conditions may vary from assay to assay, a standard curve must be established for every run.

- Bacterial or fungal contamination of either screen samples or reagents or cross-contamination between reagents may cause erroneous results.
- Disposable pipette tips, flasks or glassware are preferred, reusable glassware must be washed and thoroughly rinsed of all detergents before use.
- Improper or insufficient washing at any stage of the procedure will result in either false positive or false negative results. Empty wells completely before dispensing fresh wash solution, fill with Wash Buffer as indicated for each wash cycle and do not allow wells to sit uncovered or dry for extended periods.

Performance characteristics

Sensitivity

The limit of detection of monkey IL-8 defined as the analyte concentration resulting in an absorbance significantly higher than that of the dilution medium (mean plus 2 standard deviations) was determined to be 1.5 U/mL (mean of 6 independent assays).

Reproducibility

Intra-assay

Reproducibility within the assay was evaluated in 3 independent experiments. Each assay was carried out with 6 replicates of 8 samples containing different concentrations of monkey IL-8. Two standard curves were run on each plate. The calculated overall intra-assay coefficient of variation was < 5%.

Inter-assay

Assay to assay reproducibility within one laboratory was evaluated in 3 independent experiments by 3 technicians. Each assay was carried out with 6 replicates of 8 samples containing different concentrations of monkey IL-8. Two standard curves were run on each plate. The calculated overall coefficient of variation was < 10%.

Spike recovery

The spike recovery was evaluated by spiking 4 levels of monkey IL-8 into samples (serum matrix). Recoveries were determined in 3 independent experiments with 6 replicates each. The unspiked sample was used as blank in these experiments. Average recovery ranged from 76% to 119% with an overall mean recovery of 97.5%.

Dilution parallelism

4 samples with different levels of monkey IL-8 were analyzed at serial 2-fold dilutions with 4 replicates each. The overall mean recovery was 91%.

Sample stability

Freeze-Thaw stability

Aliquots of samples (unspiked or spiked) were stored at -20°C and thawed 5 times, and the monkey IL-8 levels determined. There was no significant loss of monkey IL-8 immunoreactivity detected by freezing and thawing.

Storage stability

Aliquots of samples (spiked or unspiked) were stored at -20°C, 2°C to 8°C, room temperature, and at 37°C, and the monkey IL-8 level determined after 24 hours. There was no significant loss of monkey IL-8 immunoreactivity detected during storage under above conditions.

Reagent preparation summary

Wash buffer (1x)

Add Wash Buffer Concentrate 20 x (25 mL) to 475 mL distilled water

Test protocol summary

1. Place standard strips in position A1/A2 to H1/H2.
2. Add distilled water, in duplicate, to all standard and blank wells as indicated on the label of the standard strips.
3. Add 100 µL distilled water to sample wells.
4. Add 50 µL Sample to designated wells.
5. Cover microwell strips and incubate 3 hours at room temperature (18°C to 25°C) on a microplate shaker.
6. Empty and wash microwell strips 6 times with 400 µL Wash Buffer.
7. Add 100 µL of TMB Substrate Solution to all wells including blank wells.
8. Incubate the microwell strips for about 10 minutes at room temperature (18°C to 25°C).
9. Add 100 µL Stop Solution to all wells including blank wells.
10. Blank microwell reader and measure color intensity at 450 nm.

Note: Samples have been diluted 1:2, thus the concentration read from the standard curve must be multiplied by the dilution factor (x 2).

Customer and technical support

Visit thermofisher.com/support for the latest service and support information.

- Worldwide contact telephone numbers

- Product support information
 - Product FAQs
 - Software, patches, and updates
 - Training for many applications and instruments
- Order and web support
- Product documentation
 - User guides, manuals, and protocols
 - Certificates of Analysis
 - Safety Data Sheets (SDSs; also known as MSDSs)

Note: For SDSs for reagents and chemicals from other manufacturers, contact the manufacturer.

Limited product warranty

Life Technologies Corporation and/or its affiliate(s) warrant their products as set forth in the Life Technologies' General Terms and Conditions of Sale at www.thermofisher.com/us/en/home/global/terms-and-conditions.html. If you have any questions, please contact Life Technologies at www.thermofisher.com/support.



Bender MedSystems GmbH | Campus Vienna Biocenter 2 | 1030 Vienna, Austria

For descriptions of symbols on product labels or product documents, go to thermofisher.com/symbols-definition.

The information in this guide is subject to change without notice.

DISCLAIMER: TO THE EXTENT ALLOWED BY LAW, THERMO FISHER SCIENTIFIC INC. AND/OR ITS AFFILIATE(S) WILL NOT BE LIABLE FOR SPECIAL, INCIDENTAL, INDIRECT, PUNITIVE, MULTIPLE, OR CONSEQUENTIAL DAMAGES IN CONNECTION WITH OR ARISING FROM THIS DOCUMENT, INCLUDING YOUR USE OF IT.

Important Licensing Information: These products may be covered by one or more Limited Use Label Licenses. By use of these products, you accept the terms and conditions of all applicable Limited Use Label Licenses.

©2019 Thermo Fisher Scientific Inc. All rights reserved. All trademarks are the property of Thermo Fisher Scientific and its subsidiaries unless otherwise specified.