

Table Top Autoclave Class S Series

BKM-S series autoclave is a Class S table top sterilizer. As a type of high pressure sterilizer, it takes steam as its sterilization medium which is fast, safe and economic. They are common used in medical health care institution or R&D institution to make the sterilization for wrapped or unwrapped instrument, fabric, utensils, culture medium, unsealed liquid, etc.



BKM-Z24S/45S



BKM-Z80S

Features:

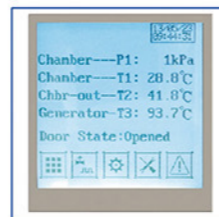
Built-in open type water tank

- a. Easy-clean open type water tank
- b. Water quality monitor
- c. Water filter inside
- d. Water level sensor
- e. A fully injected water tank can support repeated program running.



Brand-new operation interface

The LCD screen can display temperature, pressure, time, operating status, error and alarm information, etc. It is convenient for users to observe the sterilizer running status.



Multiple safety protection devices

Over temperature automatic protective device, multiple control and protection for steam generator, door safety interlock protection and dual chamber overpressure protection, electronic circuit safety device.

Automatic door structure

BKM-Z24/45S series adopt automatic door structure, fast and simple operation, protecting operators from scald.

BKM-Z80S series adopt multipoint synchronous linkage pressing technology, reliable and durable.

A variety of programs

Sterilization programs: Unwrapped, Wrapped, Rubber, User01, N-Quick

Auxiliary program: Preheat, Washing

Efficiency steam generator

BKM-Z24/45S series adopts build-in instant steam generator. BKM-Z80S adopts build-in energy-storage type steam generator producing steam in high speed and large quantity.

Other features

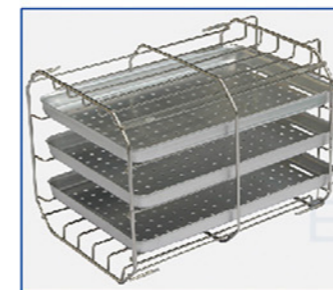
Heating, sterilization, exhausting, drying totally automatic.

Chamber is heated by film heater, saving energy and time.

Record type: built-in printer (Standard)

Electronic storage: USB flash disk (Optional)

Loading tray



Type A



Type B



Type C(Optional for 45/80L)

Technical Parameters:

Model	BKM-Z24S	BKM-Z45S	BKM-Z80S
Capacity	24L	45L	80L
Chamber Size(mm)	φ250*450	φ316*618	φ385*717
Design Pressure	-0.1/0.3MPa		
Design Temp.	144°C		
Temp. Range	105~138°C		
Chamber Material	SUS304		
Standard Loading Tray	Type A	Type B	
Consumption	2.6KW	5.8KW	7.4KW
Power Supply	AC110/220V±10%, 50/60Hz		AC220V±10%, 50/60Hz
External Size(W*D*H) mm	530*660*450	640*855*550	730*1050*560
Package Size(W*D*H) mm	720*880*700	750*1015*730	830*1180*795
Gross Weight(kg)	80	140	205