

Cyclophilin 40 Polyclonal Antibody

Product Details	
Size	100 µL
Species Reactivity	Human, Mouse, Rat
Published Species	Rabbit, Rat, Non-human primate, Hamster, Bovine, Mouse, Human, Chicken
Host/Isotype	Rabbit / IgG
Class	Polyclonal
Type	Antibody
Conjugate	Unconjugated
Immunogen	Synthetic peptide corresponding to residues C A(356) Q K D K E K A V Y A K M F A(370) of human Cyp-40.
Form	Liquid
Concentration	1 mg/mL
Purification	Affinity chromatography
Storage buffer	PBS with 1mg/mL BSA
Contains	0.05% sodium azide
Storage conditions	-20° C, Avoid Freeze/Thaw Cycles
RRID	AB_2169452

Applications	Tested Dilution	Publications
Western Blot (WB)	1:1,000	28 Publications
Immunohistochemistry (IHC)	-	1 Publication
Immunohistochemistry (Frozen) (IHC (F))	1:100	-
Immunocytochemistry (ICC/IF)	Assay-dependent	3 Publications
Flow Cytometry (Flow)	Assay-dependent	-
Immunoprecipitation (IP)	Assay-dependent	2 Publications
Gel Shift (GS)	Assay-dependent	1 Publication

Product Specific Information

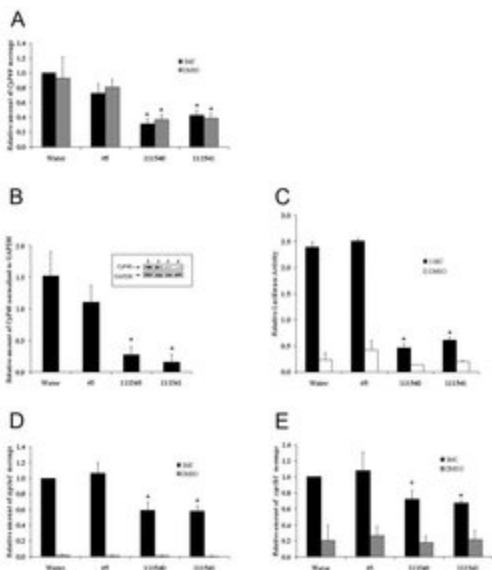
PA3-022 detect cyclophilin 40 (Cyp-40) from human and rat and mouse tissues and cells. This antibody does not cross-react with CyPA.

PA3-022 has been successfully used in Western blot, iF, immunohistochemistry, immunocytochemistry, immunoprecipitation, gel shift and FACS procedures. By Western blot, this antibody detects a 40 kDa protein representing Cyp-40 from rat brain extract.

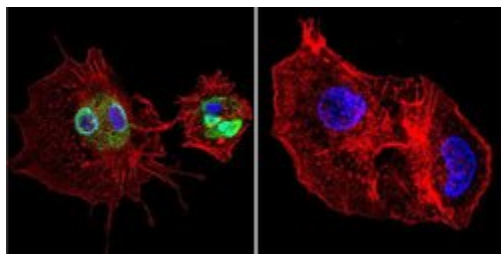
The PA3-022 immunogen is a synthetic peptide corresponding to residues C A(356) Q K D K E K A V Y A K M F A(370) of human Cyp-40.

Cyclophilin 40 Antibody (PA3-022)

Fig. 1 Effect of CyP40 siRNA knockdown on AhR signaling MCF-7 cells were transfected with one of the four conditions: water control, 30 nM of either scramble siRNA #5, or CyP40 siRNA 111540/111541. All data are in triplicate (n=3) and the error bars represent means +- SD. (A) Relative amount of the CyP40 message under the four conditions in the presence or absence of 1uM 3MC with *p-value < 0.05. The water control plus 3MC was arbitrarily set as 1. (B) Relative amount of the CyP40 protein under the four conditions in the presence of 1uM 3MC. The inset shows the CyP40 and GAPDH western. Anti-CyP40 pAb (1:5,000) and anti-GAPDH mAb (1: 5,000) were used in TBST plus 5 % nonfat dry milk. Corresponding secondary IgG conjugated with AP (Sigma, 1:40,000) was used with Lumi-Phos substrate (Pierce). *p-value < 0.01 when compared to the siRNA #5 control. (C) Relative 3MC-driven luciferase expression under the four conditions with *p-value < 0.01. (D) Relative amount of the cyp1a1 message under the four conditions with *p-value < 0.01. (E) Relative amount of the cyp1b1 message under the four conditions with *p-value < 0.05 and + p-value < 0.07. Knockdown validation info.

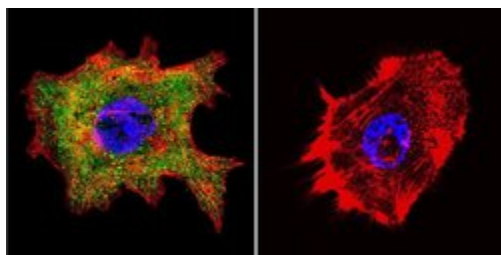


Product Images For Cyclophilin 40 Polyclonal Antibody



Cyclophilin 40 Antibody (PA3-022) in ICC/IF

Immunofluorescent analysis of Cyclophilin D in HepG2 Cells. Cells were grown on chamber slides and fixed with formaldehyde prior to staining. Cells were probed without (control) or with a Cyclophilin D polyclonal antibody (Product # PA3-022) at a dilution of 1:200 overnight at 4 C, washed with PBS and incubated with a DyLight-488 conjugated secondary antibody (Product # 35552). Cyclophilin D staining (green), F-Actin staining with Phalloidin (red) and nuclei with DAPI (blue) is shown. Images were taken at 60X magnification.



Cyclophilin 40 Antibody (PA3-022) in ICC/IF

Immunofluorescent analysis of Cyclophilin D in A431 Cells. Cells were grown on chamber slides and fixed with formaldehyde prior to staining. Cells were probed without (control) or with a Cyclophilin D polyclonal antibody (Product # PA3-022) at a dilution of 1:200 overnight at 4 C, washed with PBS and incubated with a DyLight-488 conjugated secondary antibody (Product # 35552). Cyclophilin D staining (green), F-Actin staining with Phalloidin (red) and nuclei with DAPI (blue) is shown. Images were taken at 60X magnification.

View more figures on thermofisher.com

Western Blot (28)

Redox biology

Genetic ablation of tau improves mitochondrial function and cognitive abilities in the hippocampus.

"PA3-022 was used in Western Blotting to investigate the implications of tau ablation on the mitochondrial function and cognitive abilities of a litter of 3 months old mice."

Authors: Jara C, Aránguiz A, Cerpa W, Tapia-Rojas C, Quintanilla RA

Species
Mouse

Dilution
1:1,000

Year
2018

BMC neuroscience

A mitochondrial division inhibitor, Mdivi-1, inhibits mitochondrial fragmentation and attenuates kainic acid-induced hippocampal cell death.

"PA3-022 was used in western blot to study inhibition of mitochondrial fragmentation and attenuation of kainic acid-induced hippocampal cell death by a mitochondrial division inhibitor, Mdivi-1"

Authors: Kim H, Lee JY, Park KJ, Kim WH, Roh GS

Species
Mouse

Dilution
Not Cited

Year
2016

[View more WB references on thermofisher.com](#)

Immunohistochemistry (1)

Molecular and cellular biology

The physical association of multiple molecular chaperone proteins with mutant p53 is altered by geldanamycin, an hsp90-binding agent.

"PA3-022 was used in immunohistochemistry to investigate the mechanisms for the aberrant association of chaperones and mutant p53 and the intracellular accumulation of mutant p53."

Authors: Whitesell L, Sutphin PD, Pulcini EJ, Martinez JD, Cook PH

Species
Rat

Dilution
Not Cited

Year
1998

Immunocytochemistry (3)

Virology journal

Inhibition of cyclophilins alters lipid trafficking and blocks hepatitis C virus secretion.

"PA3-022 was used in immunocytochemistry to investigate the effect of cyclophilin blockade on HCV release"

Authors: Anderson LJ, Lin K, Compton T, Wiedmann B

Species
Human

Dilution
Not Cited

Year
2011

[View more ICC/IF references on thermofisher.com](#)

More applications with references on thermofisher.com

IP (2) GS (1)

For Research Use Only. Not for use in diagnostic procedures. Not for resale without express authorization. Products are warranted to operate or perform substantially in conformance with published Product specifications in effect at the time of sale, as set forth in the Production documentation, specifications and/or accompanying package inserts ("Documentation"). No claim of suitability for use in applications regulated by FDA is made. The warranty provided herein is valid only when used by properly trained individuals. Unless otherwise stated in the Documentation, this warranty is limited to one year from date of shipment when the Product is subjected to normal, proper and intended usage. This warranty does not extend to anyone other than the Buyer. Any model or sample furnished to Buyer is merely illustrative of the general type and quality of goods and does not represent that any Product will conform to such model or sample. NO OTHER WARRANTIES, EXPRESS OR IMPLIED, ARE GRANTED INCLUDING WITHOUT LIMITATION, IMPLIED WARRANTIES OF MERCHANTABILITY, FITNESS FOR ANY PARTICULAR PURPOSE, OR NON INFRINGEMENT. BUYER'S EXCLUSIVE REMEDY FOR NON-CONFORMING PRODUCTS DURING THE WARRANTY PERIOD IS LIMITED TO REPAIR, REPLACEMENT OF OR REFUND FOR THE NON-CONFORMING PRODUCT(S) AT SELLER'S SOLE OPTION. THERE IS NO OBLIGATION TO REPAIR, REPLACE OR REFUND FOR PRODUCTS AS THE RESULT OF (I) ACCIDENT, DISASTER OR EVENT OF FORCE MAJEURE, (II) MISUSE, FAULT OR NEGLIGENCE OF OR BY BUYER, (III) USE OF THE PRODUCTS IN A MANNER FOR WHICH THEY WERE NOT DESIGNED, OR (IV) IMPROPER STORAGE AND HANDLING OF THE PRODUCTS. Unless otherwise expressly stated on the Product or in the documentation accompanying the Product, the Product is intended for research only and is not to be used for any other purpose, including without limitation, unauthorized commercial uses, in vitro diagnostic uses, ex vivo or in vivo therapeutic uses, or any type of consumption by or application to human or animals.