

Mouse IgG2a kappa Isotype Control (eBM2a), PE, eBioscience™

Product Details	
Size	100 µg
Host/Isotype	Mouse / IgG2a, kappa
Class	Control
Type	Isotype Control
Clone	eBM2a
Conjugate	PE
Form	Liquid
Concentration	0.2 mg/mL
Purification	Affinity chromatography
Storage buffer	PBS, pH 7.2
Contains	0.09% sodium azide
Storage conditions	4° C, store in dark, DO NOT FREEZE!
RRID	AB_470064

Applications	Tested Dilution	Publications
Flow Cytometry (Flow)	Assay-Dependent	-
Control (Ctrl)	Assay-Dependent	-

Product Specific Information

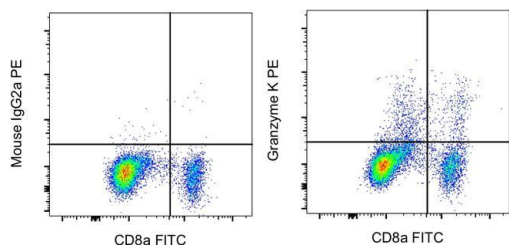
Description: This is a monoclonal mouse IgG2a, kappa antibody. It is used as an isotype control for mouse IgG2a antibodies.

Applications Reported: This mouse IgG2a isotype control has been reported for use in cell surface and intracellular flow cytometric analysis.

Applications Tested: This Mouse IgG2a K Isotype Control has been tested by flow cytometric analysis of normal human peripheral blood cells and can be used at the same concentration as the experimental antibody.

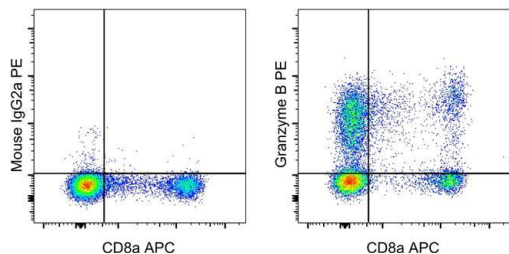
Excitation: 488-561 nm; **Emission:** 578 nm; **Laser:** Blue Laser, Green Laser, Yellow-Green Laser.

Filtration: 0.2 µm post-manufacturing filtered.



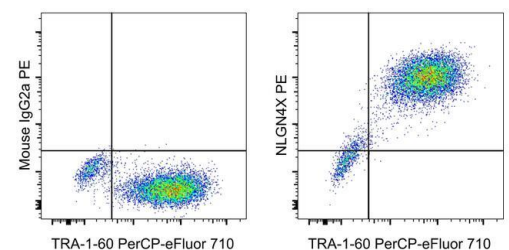
Mouse IgG2a kappa Isotype Control (12-4724-82) in Flow

Normal human peripheral blood monocytes were stimulated for 3 days with Human IL-2 Recombinant Protein (Product # PHC0027), then cultured with Protein Transport Inhibitor Cocktail (Product # 00-4980-03) for an additional 5 hours. The cells were then stained with CD8a Monoclonal Antibody, FITC (Product # 11-0088-42) and Mouse IgG2a Isotype Control, PE (Product # 12-4724-82) (left) or Granzyme K Monoclonal Antibody, PE (right) using the Intracellular Fixation and Permeabilization Buffer Set (Product # 88-8824-00). Cells in the lymphocyte gate were used for analysis.



Mouse IgG2a kappa Isotype Control (12-4724-82) in Flow

Normal human peripheral blood cells were stained intracellularly, using the Intracellular Fixation & Permeabilization Buffer Set (Product # 88-8824-00) and protocol, with CD8a Monoclonal Antibody, APC (Product # 17-0088-82) and Mouse IgG2a kappa Isotype Control, PE (Product # 12-4724-82) (left) or Granzyme B Monoclonal Antibody, PE (right). Cells in the lymphocyte gate were used for analysis.



Mouse IgG2a kappa Isotype Control (12-4724-82) in Flow

Staining of a mixture of normal human iPSC and the murine C2C12 cell line with Anti-Human TRA-1-60 (Podocalyxin) PerCP-eFluor® 710 (Product # 46-8863-82) and Mouse IgG2a kappa Isotype Control, PE (Product # 12-4724-82) (left) or Anti-Human NLGN4X (Neuroigin-4) PE (right). Viable cells, as determined by Fixable Viability Dye eFluor® 450 (Product # 65-0863-14), were used for analysis.

[View more figures on thermofisher.com](https://www.thermofisher.com)

9 References

Changes in circulating exosome molecular profiles following surgery/(chemo)radiotherapy: early detection of response in head and neck cancer patients. *Br J Cancer* (2021)

Synergistic effect of non-neutralizing antibodies and interferon- for cross-protection against influenza. *iScience* (2021)

Effects of Extracellular Vesicles from Blood-Derived Products on Osteoarthritic Chondrocytes within an Inflammation Model. *Int J Mol Sci* (2021)

Genetic inactivation of RIP1 kinase activity in rats protects against ischemic brain injury. *Cell Death Dis* (2021)

ER stress-induced mediator C/EBP homologous protein thwarts effector T cell activity in tumors through T-bet repression. *Nat Commun* (2019)

For Research Use Only. Not for use in diagnostic procedures. Not for resale without express authorization. Products are warranted to operate or perform substantially in conformance with published Product specifications in effect at the time of sale, as set forth in the Production documentation, specifications and/or accompanying package inserts ("Documentation"). No claim of suitability for use in applications regulated by FDA is made. The warranty provided herein is valid only when used by properly trained individuals. Unless otherwise stated in the Documentation, this warranty is limited to one year from date of shipment when the Product is subjected to normal, proper and intended usage. This warranty does not extend to anyone other than the Buyer. Any model or sample furnished to Buyer is merely illustrative of the general type and quality of goods and does not represent that any Product will conform to such model or sample. NO OTHER WARRANTIES, EXPRESS OR IMPLIED, ARE GRANTED INCLUDING WITHOUT LIMITATION, IMPLIED WARRANTIES OF MERCHANTABILITY, FITNESS FOR ANY PARTICULAR PURPOSE, OR NON INFRINGEMENT. BUYER'S EXCLUSIVE REMEDY FOR NON-CONFORMING PRODUCTS DURING THE WARRANTY PERIOD IS LIMITED TO REPAIR, REPLACEMENT OF OR REFUND FOR THE NON-CONFORMING PRODUCT(S) AT SELLER'S SOLE OPTION. THERE IS NO OBLIGATION TO REPAIR, REPLACE OR REFUND FOR PRODUCTS AS THE RESULT OF (I) ACCIDENT, DISASTER OR EVENT OF FORCE MAJEURE, (II) MISUSE, FAULT OR NEGLIGENCE OF OR BY BUYER, (III) USE OF THE PRODUCTS IN A MANNER FOR WHICH THEY WERE NOT DESIGNED, OR (IV) IMPROPER STORAGE AND HANDLING OF THE PRODUCTS. Unless otherwise expressly stated on the Product or in the documentation accompanying the Product, the Product is intended for research only and is not to be used for any other purpose, including without limitation, unauthorized commercial uses, in vitro diagnostic uses, ex vivo or in vivo therapeutic uses, or any type of consumption by or application to human or animals.