

Human Apo E (AD2) ELISA Kit

Catalog Number EHAPOE (96 tests), EHAPOEX10 (10 x 96 tests)

Rev. 7

Product description

The Human Apo E (AD2) ELISA Kit is a solid-phase sandwich Enzyme-Linked Immunosorbent Assay (ELISA) designed to detect and quantify the level of human apo E in serum, plasma, and cell culture media.

Contents and storage

Upon receipt, store at 2-8°C for 6 months or -20°C for 1 year.

Components	Cat. No. EHAPOE (96 tests)	Cat. No. EHAPOEX10 (10 x 96 tests)
Human Apo E Antibody Coated wells, 96-well plate	1 plate	10 plates
Human Apo E Biotin Conjugate	2 vials	20 vials
Human Apo E Standard, recombinant human apo E	2 vials	20 vials
Wash Buffer Concentrate (20X)	25 mL	12 x 25 mL
Assay Diluent (5X)	15 mL	10 x 15 mL
Streptavidin-HRP (1500X)	0.2 mL	10 x 0.2 mL
TMB Substrate	12 mL	10 x 12 mL
Stop Solution	8 mL	10 x 8 mL
Adhesive Plate Covers	2	20

Materials required but not supplied

- Distilled or deionized water
- Microtiter plater reader with software capable of measuring at 450 nm
- Plate washer-automated or manual (manifold dispenser)
- Calibrated adjustable precision pipettes and glass or plastic tubes for diluting solutions

Procedural guidelines

- Review the **Procedural guidelines** and **Plate washing directions** in the *ELISA Technical Guide* at thermofisher.com for details prior to starting the procedure.
- Reagents are lot-specific. Do not mix or interchange different reagent lots from various kit lots.

Prepare 1X Wash Buffer

1. Allow Wash Buffer Concentrate (20X) to reach room temperature and mix to redissolve any precipitated salts.
2. Dilute 20 mL of the Wash Buffer Concentrate into 380 mL of deionized or distilled water. Label as 1X Wash Buffer.
3. Store the concentrate and 1X Wash Buffer in the refrigerator. Use the diluted buffer within one month.

Prepare diluent

- Assay Diluent should be diluted 5-fold with deionized or distilled water before use.

Prepare biotin conjugate

1. Briefly spin down the biotin conjugate before use.
2. Add 100 μL of 1X Assay Diluent into the vial to prepare a biotin conjugate concentrate.
3. Pipette up and down to mix gently (the concentrate can be stored at 4°C for 5 days).
4. The biotin conjugate concentrate should be diluted 80-fold with 1X Assay Diluent and used in step 2 of ELISA procedure.

Sample preparation guidelines

- Collect samples in pyrogen/endotoxin-free tubes.
- Freeze samples after collection if samples will not be tested immediately. Avoid multiple freeze-thaw cycles of frozen samples. Thaw completely and mix well (do not vortex) prior to analysis.
- Avoid the use of hemolyzed or lipemic sera. If large amounts of particulate matter are present in the sample, centrifuge or filter sample prior to analysis.

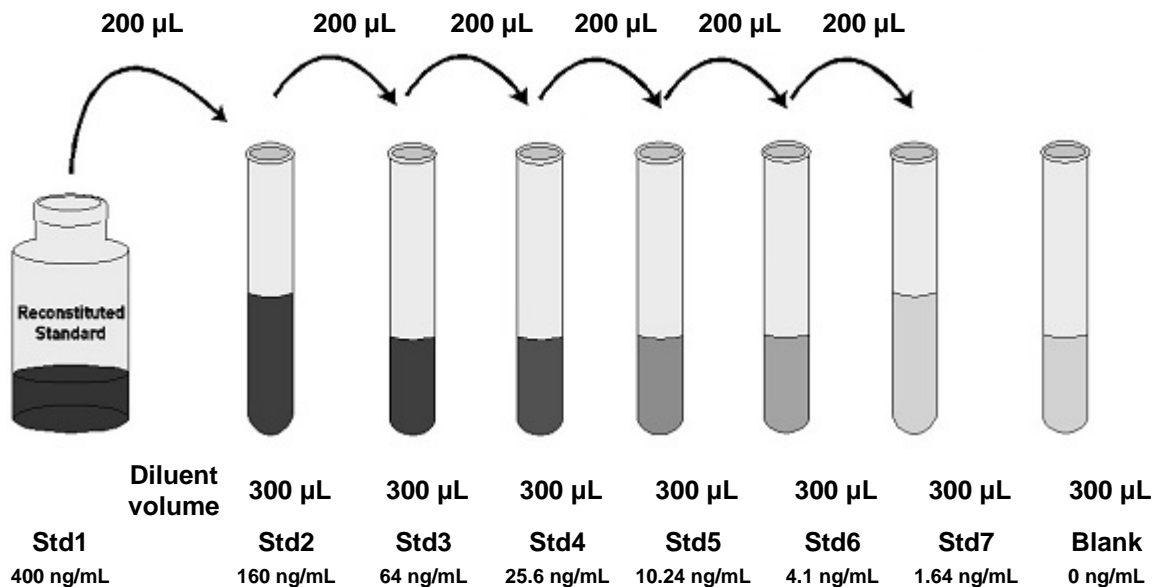
Pre-dilute samples

- 1X Assay Diluent should be used for dilution of serum, plasma, and cell culture supernatant samples.
- Dilute **serum and plasma** 1,000-fold.
- Because conditions may vary, it is recommended that each investigator determine the optimal dilution to be used for each application.

Dilute standards

Note: Use glass or plastic tubes for diluting standards.

1. Briefly spin down a vial of lyophilized standard.
2. Add 400 μL 1X Assay Diluent (Assay Diluent should be diluted 5-fold with deionized or distilled water before use) into the lyophilized standard vial to prepare a 400 ng/mL standard solution. Dissolve the powder thoroughly by gentle mixing. Pipette 300 μL 1X Assay Diluent into each tube. Use the 400 ng/mL standard solution to produce a dilution series (shown below). Mix each tube thoroughly before the next transfer. 1X Assay Diluent serves as the zero standard (0 pg/mL).



Prepare 1X Streptavidin-HRP solution

Note: Prepare the Streptavidin-HRP within 15 minutes of usage.

1. Briefly spin the Streptavidin-HRP and pipette up and down to mix gently before use, as precipitates may form during storage.
2. Dilute Streptavidin-HRP 1500-fold with 1X Assay Diluent.
3. Do not store diluted solution for future use.

Perform ELISA (Total assay time: 4 hours and 45 minutes)

Allow all reagents to reach room temperature before use. Mix all liquid reagents prior to use.

IMPORTANT! Perform a standard curve with each assay.

Determine the number of 8-well strips required for the assay. Insert the strips in the frames for use. Re-bag any unused strips and frames, and store at 2 to 8°C for future use.



Capture antibody



Antigen



Biotin conjugate



Streptavidin-HRP

1 Bind antigen



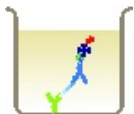
- For the standard curve, add 100 μL of standards to the appropriate wells (see Dilute standards). For samples, add 100 μL of diluted samples (see Dilute samples) to the wells.
- Cover wells and incubate for 2.5 hours at room temperature or over night at 4°C with gentle shaking.
- Discard the solution and wash 4 times with 1X Wash Buffer. Wash by filling each well with Wash Buffer (300 μL) using a multi-channel Pipette or autowasher. Complete removal of liquid at each step is essential for good performance. After the last wash, remove any remaining Wash Buffer by aspirating or decanting. Invert the plate and blot it against clean paper towels.

2 Add biotin conjugate



- Add 100 μL of prepared biotin conjugate (see Prepare biotin conjugate) to each well.
- Incubate for 1 hour at room temperature with gentle shaking.
- Discard the solution. Repeat the wash as in step 3.

3 Add Streptavidin-HRP



- Add 100 μL of prepared Streptavidin-HRP solution (see Prepare Streptavidin-HRP solution) to each well.
- Incubate for 45 minutes at room temperature with gentle shaking.
- Discard the solution. Repeat the wash as in step 3.

4 Add TMB substrate



- Add 100 μL of TMB Substrate to each well. The substrate will begin to turn blue.
- Incubate for 30 minutes at room temperature **in the dark** with gentle shaking.

5 Add stop solution



Add 50 μL of Stop Solution to each well. Tap the side of the plate gently to mix. The solution in the well changes from blue to yellow.

Read the plate and generate the standard curve

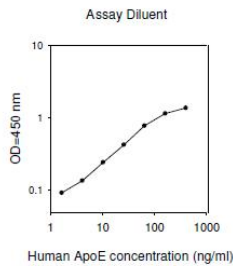
1. Read the absorbance at 450 nm. Read the plate within 30 minutes after adding the Stop Solution.
2. Use curve-fitting software to generate the standard curve. A four parameter algorithm provides the best standard curve fit. Optimally, the background absorbance may be subtracted from all data points, including standards, unknowns and controls, prior to plotting.
3. Read the concentrations for unknown samples and control from the standard curve. Multiple value(s) obtained for sample(s) by the appropriate factor to correct for the sample dilution.

Note: Dilute samples producing signals greater than that of the highest standard in Standard Diluent Buffer and reanalyze. Multiply the concentration by the appropriate dilution factor.

Performance characteristics

Standard curve (example)

These standard curves are for demonstration only. A standard curve must be run with each assay.



Intra-assay precision

To determine intra-assay precision, two standard curves and 3 samples for each standard curve are run. The standard curve concentration points as well as the samples are tested in duplicates on a single plate. Two different concentration values are obtained for each sample, using the two separate standard curves. The two concentration values for each sample is compared to each other using the CV% calculation.

Intra-Assay CV%: <10%

Inter-assay precision

To evaluate inter-assay precision, the second standard curve is tested on a separate plate along with the second set of samples.

Inter-Assay CV%: <12%

Recovery

Sample Type	Average % Recovery	Recovery Range (%)
Serum	136	126-142
Plasma	131	116-144
Cell Culture Media	78	69-91

Specificity

This ELISA pair antibody detects human ApoE (isoforms ApoE2, ApoE3 and ApoE4).

Linearity of dilution

The serum, plasma, and cell culture media samples were spiked with recombinant human apo E, serially diluted in sample diluent and evaluated. Observed values were compared to expected values to calculate percent recovery and demonstrate the dilution linearity of the assay.

Sample Type	Average % Expected		Range (%)	
	1:2 Dilution	1:4 Dilution	1:2 Dilution	1:4 Dilution
Serum	123	97	117-129	89-105
Plasma	132	112	126-140	103-128
Cell Culture Media	143	136	135-150	128-144

Sensitivity

The minimum detectable dose of human apo E is 1.5 ng/mL. This was determined by assaying replicates of zero and the standard curve. The mean signal of zero + 2 standard deviations read in dose from the standard curve is the LLD. This value is the smallest dose that is not zero with 95% confidence.

Limited product warranty

Life Technologies Corporation and/or its affiliate(s) warrant their products as set forth in the Life Technologies' General Terms and Conditions of Sale found on Life Technologies' website at www.thermofisher.com/us/en/home/global/terms-andconditions.html. If you have any questions, please contact Life Technologies at www.thermofisher.com/support.

Product label explanation of symbols and warnings



DISCLAIMER

TO THE EXTENT ALLOWED BY LAW, LIFE TECHNOLOGIES AND/OR ITS AFFILIATE(S) WILL NOT BE LIABLE FOR SPECIAL, INCIDENTAL, INDIRECT, PUNITIVE, MULTIPLE, OR CONSEQUENTIAL DAMAGES IN CONNECTION WITH OR ARISING FROM THIS DOCUMENT, INCLUDING YOUR USE OF IT.

Important Licensing Information: These products may be covered by one or more Limited Use Label Licenses. By use of these products, you accept the terms and conditions of all applicable Limited Use Label Licenses.

Corporate entity: Life Technologies Corporation | Carlsbad, CA 92008 USA | Toll Free in USA 1 800 955 6288

©2021 Thermo Fisher Scientific Inc. All rights reserved. All trademarks are the property of Thermo Fisher Scientific and its subsidiaries unless otherwise specified.

For support visit thermofisher.com/support or contact techsupport@lifetech.com.
thermofisher.com
22-Nov-21

ThermoFisher
SCIENTIFIC