

Mouse IL-13 ELISA Kit

Enzyme-linked Immunosorbent Assay for quantitative detection of mouse IL-13

Catalog Numbers BMS6015, BMS6015TWO and BMS6015TEN

Pub. No. MAN0016677 **Rev.** A.0 (30)

WARNING! Read the Safety Data Sheets (SDSs) and follow the handling instructions. Wear appropriate protective eyewear, clothing, and gloves. Safety Data Sheets (SDSs) are available from thermofisher.com/support.

Product description

The Mouse IL-13 ELISA Kit is an enzyme-linked immunosorbent assay for the quantitative detection of mouse IL-13.

Summary

Interleukin-13 (IL-13) is a Th2-type cytokine, secreted from CD4(+) T-cells, mast cells, basophils and eosinophils. The IL-13 gene generates a cluster with other Th2-type cytokines such as IL-4 and IL-5. Although the homology between IL-13 and IL-4 at the amino acid level is low, the IL-13 structure determined by NMR is very similar to that of IL-4. Both cytokines share their receptors and signal pathways, giving these two cytokines similar biological properties.

IL-13 is an immunoregulatory cytokine. It has become evident that IL-13 is a key mediator in the pathogenesis of allergic inflammation. IL-13 mediates its effects by interacting with a complex receptor system comprised of IL-4R α and two IL-13 binding proteins, IL-13R α 1 and IL-13R α 2.

IL-13 receptors are expressed on human B-cells, basophils, eosinophils, mast cells, endothelial cells, fibroblasts, monocytes, macrophages, respiratory epithelial cells, and smooth muscle cells. However, functional IL-13 receptors have not been demonstrated on human or mouse T-cells. Thus unlike IL-4, IL-13 does not appear to be important in the initial differentiation of CD4 T-cells into T(H)2-type cells but rather appears to be important in the effector phase of allergic inflammation. The important role of IL-13 in the pathogenesis of bronchial asthma as well as other allergic diseases has been recognized, based mainly on analyzes of mouse models. Interleukin-13 further plays a major role in various other inflammatory diseases including cancer. The IL-13R α 2 but not IL-13R α 1 chain binds IL-13 with high affinity and is overexpressed in a variety of human cancer cells derived from glioma, squamous cell carcinoma of head and neck, and AIDS-associated Kaposi's sarcoma.

For literature update refer to our website.

Principles of the test

An anti-mouse IL-13 coating antibody is adsorbed onto microwells.

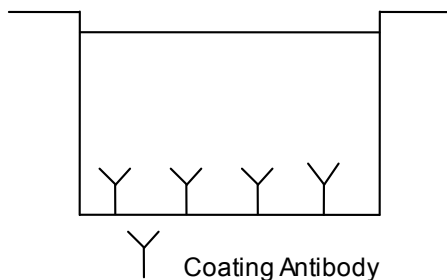


Fig. 1 Coated microwell

Mouse IL-13 present in the sample or standard binds to antibodies adsorbed to the microwells. A biotin-conjugated anti-mouse IL-13 antibody is added and binds to mouse IL-13 captured by the first antibody.

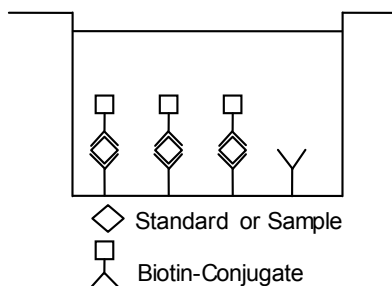


Fig. 2 First incubation

Following incubation unbound biotin-conjugated anti-mouse IL-13 antibody is removed during a wash step. Streptavidin-HRP is added and binds to the biotin-conjugated anti-mouse IL-13 antibody.

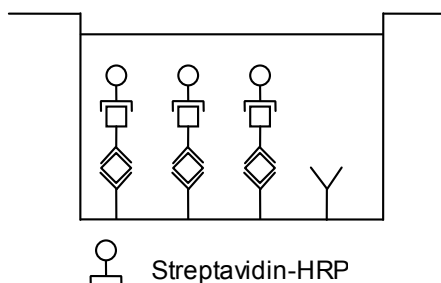


Fig. 3 Second incubation

Following incubation unbound Streptavidin-HRP is removed during a wash step, and substrate solution reactive with HRP is added to the wells.

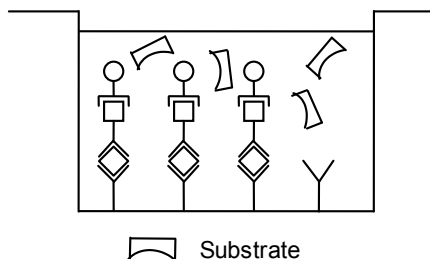


Fig. 4 Third incubation

A colored product is formed in proportion to the amount of mouse IL-13 present in the sample or standard. The reaction is terminated by addition of acid and absorbance is measured at 450 nm. A standard curve is prepared from 7 mouse IL-13 standard dilutions and mouse IL-13 sample concentration determined.

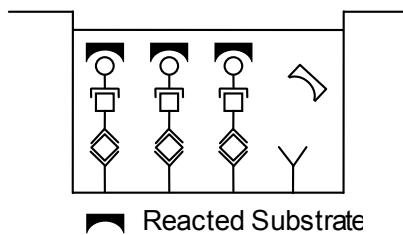


Fig. 5 Stop reaction

Reagents provided

Reagents for mouse IL-13 ELISA BMS6015 (96 tests)

- 1 aluminum pouch with a Microwell Plate (12 strips with 8 wells each) coated with polyclonal antibody to mouse IL-13
- 1 vial (70 μ L) Biotin-Conjugate anti-mouse IL-13 polyclonal antibody
- 1 vial (150 μ L) Streptavidin-HRP
- 2 vials mouse IL-13 Standard lyophilized, 1 ng/mL upon reconstitution
- 1 vial (12 mL) Sample Diluent
- 1 vial (5 mL) Assay Buffer Concentrate 20x (PBS with 1% Tween™ 20, 10% BSA)
- 1 bottle (50 mL) Wash Buffer Concentrate 20x (PBS with 1% Tween™ 20)
- 1 vial (15 mL) Substrate Solution (tetramethyl-benzidine)
- 1 vial (15 mL) Stop Solution (1M Phosphoric acid)
- 4 Adhesive Films

Reagents for mouse IL-13 ELISA BMS6015TWO (2x96 tests)

- 2 aluminum pouches with a Microwell Plate (12 strips with 8 wells each) coated with polyclonal antibody to mouse IL-13
- 2 vials (70 μ L) Biotin-Conjugate anti-mouse IL-13 polyclonal antibody
- 2 vials (150 μ L) Streptavidin-HRP
- 4 vials mouse IL-13 Standard lyophilized, 1 ng/mL upon reconstitution
- 2 vials (12 mL) Sample Diluent
- 1 vial (5 mL) Assay Buffer Concentrate 20x (PBS with 1% Tween™ 20, 10% BSA)
- 1 bottle (50 mL) Wash Buffer Concentrate 20x (PBS with 1% Tween™ 20)
- 2 vials (15 mL) Substrate Solution (tetramethyl-benzidine)
- 2 vials (15 mL) Stop Solution (1M Phosphoric acid)
- 8 Adhesive Films

Reagents for mouse IL-13 ELISA BMS6015TEN (10x96 tests)

- 10 aluminum pouches with a Microwell Plate (12 strips with 8 wells each) coated with polyclonal antibody to mouse IL-13
- 10 vials (70 μ L) Biotin-Conjugate anti-mouse IL-13 polyclonal antibody
- 10 vials (150 μ L) Streptavidin-HRP
- 10 vials mouse IL-13 Standard lyophilized, 1 ng/mL upon reconstitution
- 7 vials (12 mL) Sample Diluent
- 2 vials (5 mL) Assay Buffer Concentrate 20x (PBS with 1% Tween™ 20, 10% BSA)
- 4 bottles (50 mL) Wash Buffer Concentrate 20x (PBS with 1% Tween™ 20)
- 10 vials (15 mL) Substrate Solution (tetramethyl-benzidine)
- 1 vial (100 mL) Stop Solution (1M Phosphoric acid)
- 20 Adhesive Films

Storage instructions – ELISA kit

Store kit reagents between 2°C and 8°C. Immediately after use remaining reagents should be returned to cold storage (2°C to 8°C). Expiry of the kit and reagents is stated on labels.

Expiry of the kit components can only be guaranteed if the components are stored properly, and if, in case of repeated use of one component, this reagent is not contaminated by the first handling.

Sample collection and storage instructions

Cell culture supernatant, serum, and plasma (EDTA, citrate) were tested with this assay. Other biological samples might be suitable for use in the assay. Remove serum or plasma from the clot or cells as soon as possible after clotting and separation. Pay attention to a possible *Hook Effect* due to high sample concentrations (see “Calculation of results” on page 4). Samples containing a visible precipitate must be clarified prior to use in the assay. Do not use grossly hemolyzed or lipemic samples.

Samples should be aliquoted and must be stored frozen at –20°C to avoid loss of bioactive mouse IL-13. If samples are to be run within 24 hours, they may be stored at 2°C to 8°C (refer to “Sample stability” on page 6). Avoid repeated freeze-thaw cycles. Prior to assay, the frozen sample should be brought to room temperature slowly and mixed gently.

Materials required but not provided

- 5 mL and 10 mL graduated pipettes
- 5 μ L to 1000 μ L adjustable single channel micropipettes with disposable tips
- 50 μ L to 300 μ L adjustable multichannel micropipette with disposable tips
- Multichannel micropipette reservoir
- Beakers, flasks, cylinders necessary for preparation of reagents
- Device for delivery of wash solution (multichannel wash bottle or automatic wash system)
- Microwell strip reader capable of reading at 450 nm (620 nm as optional reference wave length)
- Glass-distilled or deionized water
- Statistical calculator with program to perform regression analysis

Precautions for use

- All chemicals should be considered as potentially hazardous. We therefore recommend that this product is handled only by those persons who have been trained in laboratory techniques and that it is used in accordance with the principles of good laboratory practice. Wear suitable protective clothing such as laboratory overalls, safety glasses, and gloves. Care should be taken to avoid contact with skin or eyes. In the case of contact with skin or eyes wash immediately with water. See material safety data sheet(s) and/or safety statement(s) for specific advice.
- Reagents are intended for research use only and are not for use in diagnostic or therapeutic procedures.
- Do not mix or substitute reagents with those from other lots or other sources.
- Do not use kit reagents beyond expiration date on label.
- Do not expose kit reagents to strong light during storage or incubation.
- Do not pipet by mouth.
- Do not eat or smoke in areas where kit reagents or samples are handled.
- Avoid contact of skin or mucous membranes with kit reagents or samples.
- Rubber or disposable latex gloves should be worn while handling kit reagents or samples.
- Avoid contact of substrate solution with oxidizing agents and metal.
- Avoid splashing or generation of aerosols.

- To avoid microbial contamination or cross-contamination of reagents or samples that may invalidate the test, use disposable pipette tips and/or pipettes.
- Use clean, dedicated reagent trays for dispensing the conjugate and substrate reagent.
- Exposure to acid inactivates the conjugate.
- Glass-distilled water or deionized water must be used for reagent preparation.
- Substrate solution must be at room temperature prior to use.
- Decontaminate and dispose samples and all potentially contaminated materials as if they could contain infectious agents. The preferred method of decontamination is autoclaving for a minimum of 1 hour at 121.5°C.
- Liquid wastes not containing acid and neutralized waste may be mixed with sodium hypochlorite in volumes such that the final mixture contains 1.0% sodium hypochlorite. Allow 30 minutes for effective decontamination. Liquid waste containing acid must be neutralized prior to the addition of sodium hypochlorite.

Preparation of reagents

1. Buffer Concentrates should be brought to room temperature and should be diluted before starting the test procedure.
2. If crystals have formed in the Buffer Concentrates, warm them gently until they have completely dissolved.

Wash buffer (1x)

1. Pour entire contents (50 mL) of the Wash Buffer Concentrate (20x) into a clean 1000 mL graduated cylinder. Bring to final volume of 1000 mL with glass-distilled or deionized water. Mix gently to avoid foaming.
2. Transfer to a clean wash bottle and store at 2°C to 25°C. Note that Wash Buffer (1x) is stable for 30 days.
3. Wash Buffer (1x) may also be prepared as needed according to the following table:

Number of Strips	Wash Buffer Concentrate (20x) (mL)	Distilled Water (mL)
1 - 6	25	475
1 - 12	50	950

Assay buffer (1x)

1. Pour the entire contents (5 mL) of the Assay Buffer Concentrate (20x) into a clean 100 mL graduated cylinder. Bring to final volume of 100 mL with distilled water. Mix gently to avoid foaming.
2. Store at 2°C to 8°C. Note that the Assay Buffer (1x) is stable for 30 days.
3. Assay Buffer (1x) may also be prepared as needed according to the following table:

Number of Strips	Assay Buffer Concentrate (20x) (mL)	Distilled Water (mL)
1 - 6	2.5	47.5
1 - 12	5.0	95.0

Biotin-Conjugate

Note: The Biotin-Conjugate should be used within 30 minutes after dilution.

Make a 1:100 dilution of the concentrated Biotin-Conjugate solution with Assay Buffer (1x) in a clean plastic tube as needed according to the following table:

Number of Strips	Biotin-Conjugate (mL)	Assay Buffer (1x) (mL)
1 - 6	0.03	2.97
1 - 12	0.06	5.94

Streptavidin-HRP

Note: The Streptavidin-HRP should be used within 30 minutes after dilution.

Make a 1:100 dilution of the concentrated Streptavidin-HRP solution with Assay Buffer (1x) in a clean plastic tube as needed according to the following table:

Number of Strips	Streptavidin-HRP (mL)	Assay Buffer (1x) (mL)
1 - 6	0.06	5.94
1 - 12	0.12	11.88

Mouse IL-13 standard

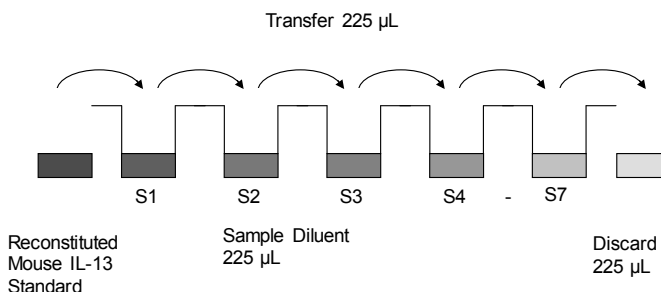
1. Reconstitute mouse IL-13 standard by addition of distilled water.
2. Reconstitution volume is stated on the label of the standard vial. Swirl or mix gently to insure complete and homogeneous solubilization (concentration of reconstituted standard = 1 ng/mL). Allow the reconstituted standard to sit for 10-30 minutes. Mix well prior to making dilutions.

The standard has to be used immediately after reconstitution and cannot be stored.

External standard dilution

1. Label 7 tubes, one for each standard point: S1, S2, S3, S4, S5, S6, S7.
2. Prepare 1:2 serial dilutions for the standard curve as follows: Pipette 225 µL of Sample Diluent into each tube.
3. Pipette 225 µL of reconstituted standard (concentration = 1000 pg/mL) into the first tube, labeled S1, and mix (concentration of standard 1 = 500 pg/mL).
4. Pipette 225 µL of this dilution into the second tube, labeled S2, and mix thoroughly before the next transfer.
5. Repeat serial dilutions 5 more times thus creating the points of the standard curve (see Figure 6).

Sample Diluent serves as blank.



Test protocol

1. Determine the number of microwell strips required to test the desired number of samples plus appropriate number of wells needed for running blanks and standards. Each sample, standard, blank and optional control sample should be assayed in duplicate. Remove extra microwell strips from holder and store in foil bag with the desiccant provided at 2°C to 8°C sealed tightly.
2. Wash the microwell strips twice with approximately 400 µL Wash Buffer per well with thorough aspiration of microwell contents between washes. Allow the Wash Buffer to sit in the wells for about 10 – 15 seconds before aspiration. Take care not to scratch the surface of the microwells.

After the last wash step, empty wells and tap microwell strips on absorbent pad or paper towel to remove excess Wash Buffer. Use the microwell strips immediately after washing. Alternatively microwell strips can be placed upside down on a wet absorbent paper for not longer than 15 minutes. Do not allow wells to dry.

- Standard dilution on the microwell plate (Alternatively the standard dilution can be prepared in tubes - see "External standard dilution" on page 3):
Add 100 µL of Sample Diluent in duplicate to all standard wells. Pipette 100 µL of prepared standard (see "Mouse IL-13 standard" on page 3, concentration = 1000.0 pg/mL) in duplicate into well A1 and A2 (see Table 1). Mix the contents of wells A1 and A2 by repeated aspiration and ejection (concentration of standard 1, S1 = 500.0 pg/mL), and transfer 100 µL to wells B1 and B2, respectively (see Figure 7). Take care not to scratch the inner surface of the microwells. Continue this procedure 5 times, creating two rows of mouse IL-13 standard dilutions ranging from 500.0 to 7.8 pg/mL. Discard 100 µL of the contents from the last microwells (G1, G2) used.

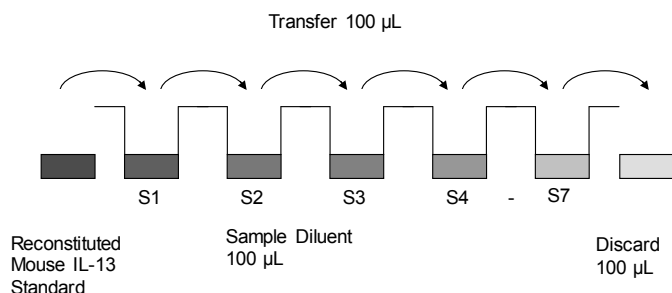


Fig. 7 Dilute standards - microwell plate

Table 1 Example of the arrangement of blanks, standards and samples in the microwell strips:

	1	2	3	4
A	Standard 1 500.0 pg/mL	Standard 1 500.0 pg/mL	Sample 1	Sample 1
B	Standard 2 250.0 pg/mL	Standard 2 250.0 pg/mL	Sample 2	Sample 2
C	Standard 3 125.0 pg/mL	Standard 3 125.0 pg/mL	Sample 3	Sample 3
D	Standard 4 62.5 pg/mL	Standard 4 62.5 pg/mL	Sample 4	Sample 4
E	Standard 5 31.3 pg/mL	Standard 5 31.3 pg/mL	Sample 5	Sample 5
F	Standard 6 15.6 pg/mL	Standard 6 15.6 pg/mL	Sample 6	Sample 6
G	Standard 7 7.8 pg/mL	Standard 7 7.8 pg/mL	Sample 7	Sample 7
H	Blank	Blank	Sample 8	Sample 8

In case of an external standard dilution (see "External standard dilution" on page 3), pipette 100 µL of these standard dilutions (S1 - S7) in the standard wells according to Table 1.

- Add 100 µL of Sample Diluent in duplicate to the blank wells.
- Add 50 µL of Sample Diluent to the sample wells.
- Add 50 µL of each sample in duplicate to the sample wells.
- Prepare Biotin-Conjugate (see "Biotin-Conjugate" on page 3).
- Add 50 µL of Biotin-Conjugate to all wells.
- Cover with an adhesive film and incubate at room temperature (18°C to 25°C) for 2 hours on a microplate shaker.
- Prepare Streptavidin-HRP (refer to "Streptavidin-HRP" on page 3).
- Remove adhesive film and empty wells. Wash microwell strips 3 times according to point 2. of the test protocol. Proceed immediately to the next step.
- Add 100 µL of diluted Streptavidin-HRP to all wells, including the blank wells.
- Cover with an adhesive film and incubate at room temperature (18°C to 25°C) for 1 hour on a microplate shaker.
- Remove adhesive film and empty wells. Wash microwell strips 3 times according to point 2. of the test protocol. Proceed immediately to the next step.
- Pipette 100 µL of TMB Substrate Solution to all wells.

- Incubate the microwell strips at room temperature (18°C to 25°C) for about 10 minutes. Avoid direct exposure to intense light.

The color development on the plate should be monitored and the substrate reaction stopped (see next point of this protocol) before positive wells are no longer properly recordable. Determination of the ideal time period for color development has to be done individually for each assay.

It is recommended to add the stop solution when the highest standard has developed a dark blue color. Alternatively the color development can be monitored by the ELISA reader at 620 nm. The substrate reaction should be stopped as soon as Standard 1 has reached an OD of 0.9 - 0.95.

- Stop the enzyme reaction by quickly pipetting 100 µL of Stop Solution into each well. It is important that the Stop Solution is spread quickly and uniformly throughout the microwells to completely inactivate the enzyme. Results must be read immediately after the Stop Solution is added or within one hour if the microwell strips are stored at 2°C to 8°C in the dark.
- Read absorbance of each microwell on a spectro-photometer using 450 nm as the primary wave length (optionally 620 nm as the reference wave length; 610 nm to 650 nm is acceptable). Blank the plate reader according to the manufacturer's instructions by using the blank wells. Determine the absorbance of both the samples and the standards.

Note: In case of incubation without shaking the obtained O.D. values may be lower than indicated below. Nevertheless the results are still valid.

Calculation of results

- Calculate the average absorbance values for each set of duplicate standards and samples. Duplicates should be within 20% of the mean value.
- Create a standard curve by plotting the mean absorbance for each standard concentration on the ordinate against the mouse IL-13 concentration on the abscissa. Draw a best fit curve through the points of the graph (a 5-parameter curve fit is recommended).
- To determine the concentration of circulating mouse IL-13 for each sample, first find the mean absorbance value on the ordinate and extend a horizontal line to the standard curve. At the point of intersection, extend a vertical line to the abscissa and read the corresponding mouse IL-13 concentration.
- If instructions in this protocol have been followed, samples have been diluted 1:2 (50 µL sample + 50 µL Sample Diluent) and the concentration read from the standard curve must be multiplied by the dilution factor (x 2).
- Calculation of samples with a concentration exceeding standard 1 will result in incorrect, low mouse IL-13 levels (Hook Effect). Such samples require further external predilution according to expected mouse IL-13 values with Sample Diluent in order to precisely quantitate the actual mouse IL-13 level.
- It is suggested that each testing facility establishes a control sample of known mouse IL-13 concentration and runs this additional control with each assay. If the values obtained are not within the expected range of the control, the assay results may be invalid.

- A representative standard curve is shown in Figure 8. This curve cannot be used to derive test results. Each laboratory must prepare a standard curve for each group of microwell strips assayed.

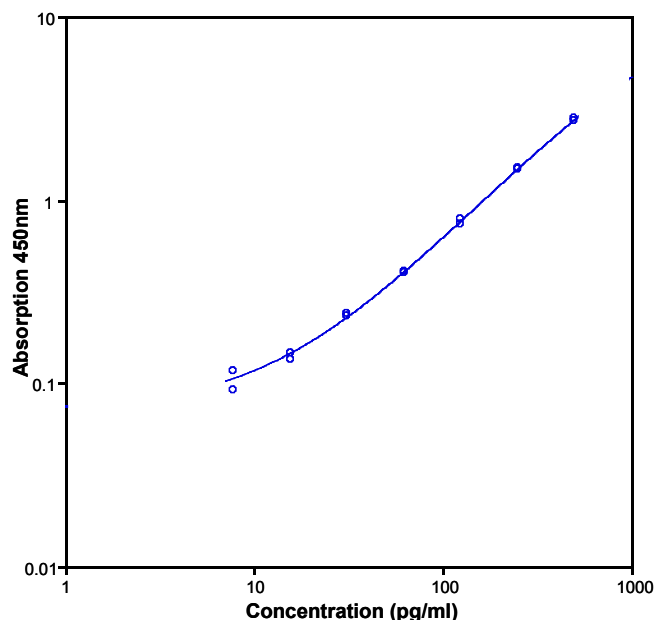


Fig. 8 Representative standard curve for mouse IL-13 ELISA. Mouse IL-13 was diluted in serial 2-fold steps in Sample Diluent. Do not use this standard curve to derive test results. A standard curve must be run for each group of microwell strips assayed.

Table 2 Typical data using the mouse IL-13 ELISA

Measuring wavelength: 450 nm

Reference wavelength: 620 nm

Standard	Mouse IL-13 Concentration (pg/mL)	O.D. at 450 nm	Mean O.D. at 450 nm	C.V. (%)
1	500.0	2.685	2.721	1.3
	500.0	2.757		
2	250.0	1.481	1.469	0.8
	250.0	1.456		
3	125.0	0.782	0.757	3.3
	125.0	0.732		
4	62.5	0.408	0.404	0.9
	62.5	0.401		
5	31.3	0.239	0.236	1.5
	31.3	0.232		
6	15.6	0.146	0.141	4.2
	15.6	0.135		
7	7.8	0.117	0.104	11.8
	7.8	0.092		
Blank	0.0	0.032	0.032	0.0
	0.0	0.032		

The OD values of the standard curve may vary according to the conditions of assay performance (e.g. operator, pipetting technique, washing technique or temperature effects). Furthermore shelf life of the kit may affect enzymatic activity and thus color intensity. Values measured are still valid.

Limitations

- Since exact conditions may vary from assay to assay, a standard curve must be established for every run.
- Bacterial or fungal contamination of either screen samples or reagents or cross-contamination between reagents may cause erroneous results.

- Disposable pipette tips, flasks or glassware are preferred, reusable glassware must be washed and thoroughly rinsed of all detergents before use.
- Improper or insufficient washing at any stage of the procedure will result in either false positive or false negative results. Empty wells completely before dispensing fresh wash solution, fill with Wash Buffer as indicated for each wash cycle and do not allow wells to sit uncovered or dry for extended periods.

Performance characteristics

Sensitivity

The limit of detection of mouse IL-13 defined as the analyte concentration resulting in an absorbance significantly higher than that of the dilution medium (mean plus 2 standard deviations) was determined to be 2.8 pg/mL (mean of 6 independent assays).

Reproducibility

Intra-assay

Reproducibility within the assay was evaluated in 3 independent experiments. Each assay was carried out with 6 replicates of 5 serum and plasma samples containing different concentrations of mouse IL-13. Two standard curves were run on each plate. Data below show the mean mouse IL-13 concentration and the coefficient of variation for each sample (see Table 3). The calculated overall intra-assay coefficient of variation was 4.6%.

Table 3 The mean mouse IL-13 concentration and the coefficient of variation for each sample

Sample	Experiment	Mean Mouse IL-13 Concentration (pg/mL)	Coefficient of Variation (%)
1	1	687.47	3.1
	2	701.19	3.3
	3	652.13	1.5
2	1	87.98	2.8
	2	92.79	6.9
	3	80.69	3.1
3	1	101.11	5.4
	2	99.35	4.3
	3	107.56	3.9
4	1	90.02	3.8
	2	91.84	7.4
	3	94.22	6.8
5	1	61.04	7.0
	2	69.57	6.3
	3	60.98	2.8

Inter-assay

Assay to assay reproducibility within one laboratory was evaluated in 3 independent experiments. Each assay was carried out with 6 replicates of 5 serum and plasma samples containing different concentrations of mouse IL-13. Two standard curves were run on each plate. Data below show the mean mouse IL-13 concentration and the coefficient of variation calculated on 18 determinations of each sample (see Table 4). The calculated overall inter-assay coefficient of variation was 5.0%.

Table 4 The mean mouse IL-13 concentration and the coefficient of variation of each sample

Sample	Mean Mouse IL-13 Concentration (pg/mL)	Coefficient of Variation (%)
1	680.26	3.7
2	87.15	7.0
3	102.67	4.2
4	92.03	2.3
5	63.87	7.7

Spike recovery

The spike recovery was evaluated by spiking 4 levels of mouse IL-13 into serum and plasma samples. Recoveries were determined in 3 independent experiments with 6 replicates each.

The amount of endogenous Product in unspiked serum was subtracted from the spike values.

The overall mean recovery of about 10% might be due to IL-13/IL13BP complex formation. (This inactive complex is not detected by the BMS6015 mouse IL-13 ELISA, see also "Specificity" on page 6.)

Sample stability

Freeze-Thaw stability

Aliquots of serum samples (spiked or unspiked) were stored at -20°C and thawed 5 times, and the mouse IL-13 levels determined. There was no significant loss of mouse IL-13 immunoreactivity detected by freezing and thawing.

Storage stability

Aliquots of serum samples (spiked or unspiked) were stored at -20°C, 2°C to 8°C, room temperature, and at 37°C, and the mouse IL-13 level determined after 24 hours. There was no significant loss of mouse IL-13 immunoreactivity detected during storage under above conditions.

Specificity

The interference of circulating factors of the immune system was evaluated by spiking these proteins at physiologically relevant concentrations into serum. There was no crossreactivity detected, notably not with the inactive IL-13/IL-13BP complex.

Expected values

A panel of sera and plasma samples from randomly selected apparently mice was tested for mouse IL-13. The detected mouse IL-13 sera levels ranged between 2.2 and 39.2 pg/mL with a mean level of 15.8 pg/mL. The detected mouse IL-13 plasma levels ranged between 0.0 and 13.3 pg/mL with a mean level of 4.2 pg/mL.

Reagent preparation summary

Wash buffer (1x)

Add Wash Buffer Concentrate 20x (50 mL) to 950 mL distilled water.

Number of Strips	Wash Buffer Concentrate (mL)	Distilled Water (mL)
1 - 6	25	475
1 - 12	50	950

Assay buffer (1x)

Add Assay Buffer Concentrate 20x (5 mL) to 95 mL distilled water.

Number of Strips	Assay Buffer Concentrate (mL)	Distilled Water (mL)
1 - 6	2.5	47.5
1 - 12	5.0	95.0

Biotin-Conjugate

Make a 1:100 dilution of Biotin-Conjugate in Assay Buffer (1x):

Number of Strips	Biotin-Conjugate (mL)	Assay Buffer (1x) (mL)
1 - 6	0.03	2.97
1 - 12	0.06	5.94

Streptavidin-HRP

Make a 1:100 dilution of Streptavidin-HRP in Assay Buffer (1x):

Number of Strips	Streptavidin-HRP (mL)	Assay Buffer (1x) (mL)
1 - 6	0.06	5.94
1 - 12	0.12	11.88

Mouse IL-13 standard

Reconstitute lyophilized mouse IL-13 standard with distilled water. (Reconstitution volume is stated on the label of the standard vial.)

Test protocol summary

1. Determine the number of microwell strips required.
2. Wash microwell strips twice with Wash Buffer.
3. Standard dilution on the microwell plate: Add 100 µL Sample Diluent, in duplicate, to all standard wells. Pipette 100 µL prepared standard into the first wells and create standard dilutions by transferring 100 µL from well to well. Discard 100 µL from the last wells.

Alternatively external standard dilution in tubes (see "External standard dilution" on page 3): Pipette 100 µL of these standard dilutions in the microwell strips.
4. Add 100 µL Sample Diluent, in duplicate, to the blank wells.
5. Add 50 µL Sample Diluent to sample wells.
6. Add 50 µL sample in duplicate, to designated sample wells.
7. Prepare Biotin-Conjugate.
8. Add 50 µL Biotin-Conjugate to all wells.
9. Cover microwell strips and incubate 2 hours at room temperature (18°C to 25°C).
10. Prepare Streptavidin-HRP.
11. Empty and wash microwell strips 3 times with Wash Buffer.
12. Add 100 µL diluted Streptavidin-HRP to all wells.
13. Cover microwell strips and incubate 1 hour at room temperature (18°C to 25°C).
14. Empty and wash microwell strips 3 times with Wash Buffer.
15. Add 100 µL of TMB Substrate Solution to all wells.
16. Incubate the microwell strips for about 10 minutes at room temperature (18°C to 25°C).
17. Add 100 µL Stop Solution to all wells.
18. Blank microwell reader and measure color intensity at 450 nm.

Note: If instructions in this protocol have been followed, samples have been diluted 1:2 (50 µL sample + 50 µL Sample Diluent) and the concentration read from the standard curve must be multiplied by the dilution factor (x 2).

Customer and technical support

Visit thermofisher.com/support for the latest service and support information.

- Worldwide contact telephone numbers
- Product support information
 - Product FAQs
 - Software, patches, and updates
 - Training for many applications and instruments
- Order and web support
- Product documentation
 - User guides, manuals, and protocols
 - Certificates of Analysis
 - Safety Data Sheets (SDSs; also known as MSDSs)

Note: For SDSs for reagents and chemicals from other manufacturers, contact the manufacturer.

Limited product warranty

Life Technologies Corporation and/or its affiliate(s) warrant their products as set forth in the Life Technologies' General Terms and Conditions of Sale at www.thermofisher.com/us/en/home/global/terms-and-conditions.html. If you have any questions, please contact Life Technologies at www.thermofisher.com/support.



The information in this guide is subject to change without notice.

DISCLAIMER: TO THE EXTENT ALLOWED BY LAW, THERMO FISHER SCIENTIFIC INC. AND/OR ITS AFFILIATE(S) WILL NOT BE LIABLE FOR SPECIAL, INCIDENTAL, INDIRECT, PUNITIVE, MULTIPLE, OR CONSEQUENTIAL DAMAGES IN CONNECTION WITH OR ARISING FROM THIS DOCUMENT, INCLUDING YOUR USE OF IT.

Important Licensing Information: These products may be covered by one or more Limited Use Label Licenses. By use of these products, you accept the terms and conditions of all applicable Limited Use Label Licenses.

©2019 Thermo Fisher Scientific Inc. All rights reserved. All trademarks are the property of Thermo Fisher Scientific and its subsidiaries unless otherwise specified. All other trademarks are the property of their respective owners.