

# IL-17F Monoclonal Antibody (SHLR17), PE, eBioscience™

Product Details	
Size	100 Tests
Species Reactivity	Human
Published Species	Human
Host/Isotype	Rat / IgG1, kappa
Recommended Isotype Control	Rat IgG1 kappa Isotype Control (eBRG1), PE, eBioscience™
Class	Monoclonal
Type	Antibody
Clone	SHLR17
Conjugate	PE
Form	Liquid
Concentration	5 µL/Test
Purification	Affinity chromatography
Storage buffer	PBS, pH 7.2, with 0.1% gelatin, 0.2% BSA
Contains	0.09% sodium azide
Storage conditions	4° C, store in dark, DO NOT FREEZE!
RRID	AB_2572654

Applications	Tested Dilution	Publications
Flow Cytometry (Flow)	5 µL (0.5 µg)/test	1 Publication

## Product Specific Information

Description: The SHLR17 monoclonal antibody reacts with human interleukin (IL)-17F. IL-17F is a homodimeric, 34 kDa member of the IL-17 family, which includes IL-17(A), B, C, D, E (IL-25). Within this family, IL-17A and IL-17F are produced preferentially by T helper 17 (Th17) cells, with other members produced more widely. IL-17F and IL-17A have many overlapping functions, but knockout studies have shown each to have independent functions as well. In vitro cultured Th17 cells have been shown to express IL-17F and IL-17A homodimers and IL-17A/F heterodimers depending on the culture conditions and their differentiation state. A heterodimer of IL-17RA and IL-17RC has been shown to bind IL-17F, resulting in target cell-secretion of pro-inflammatory cytokines and chemokines, as well as neutrophil recruitment.

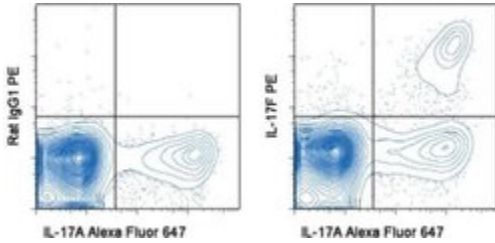
Applications Reported: This SHLR17 antibody has been reported for use in intracellular staining followed by flow cytometric analysis.

Applications Tested: This SHLR17 antibody has been pre-titrated and tested by intracellular staining followed by flow cytometric analysis of TH17-polarized normal human peripheral blood cells. This can be used at 5 µL (0.5 µg) per test. A test is defined as the amount (µg) of antibody that will stain a cell sample in a final volume of 100 µL. Cell number should be determined empirically but can range from 10<sup>5</sup> to 10<sup>8</sup> cells/test.

Excitation: 488-561 nm; Emission: 578 nm; Laser: Blue Laser, Green Laser, Yellow-Green Laser.

Filtration: 0.2 µm post-manufacturing filtered.

## Product Images For IL-17F Monoclonal Antibody (SHLR17), PE, eBioscience™



### IL-17F Antibody (12-7169-42) in Flow

Intracellular staining of CD4-enriched Th17-polarized, (using Human IL-23 Recombinant Protein (Product # 14-8239-63) normal human peripheral blood cells after 5-hour stimulation with Cell Stimulation Cocktail (plus protein transport inhibitors) (Product # 00-4975-03) with Anti-Human IL-17A Alexa Fluor® 647 and Mouse IgG1 K Isotype Control PE (Product # 12-4714-81) (left) or Anti-Human IL-17F PE (right). Cells were fixed and permeabilized using Intracellular Fixation & Permeabilization Buffer Set (Product # 88-8824-00). Total viable cells were used for analysis.

## 1 Reference

### Flow Cytometry (1)

Journal of immunology (Baltimore, Md. : 1950)

#### Dimethyl Fumarate Selectively Reduces Memory T Cells and Shifts the Balance between Th1/Th17 and Th2 in Multiple Sclerosis Patients.

"12-7169 was used in Flow cytometry/Cell sorting to study the therapeutic effects of dimethyl fumarate and its side effect of progressive multifocal leukoencephalopathy."

Authors: Wu Q,Wang Q,Mao G,Dowling CA,Lundy SK,Mao-Draayer Y

**Species**  
Human

**Dilution**  
Not Cited

**Year**  
2017

For Research Use Only. Not for use in diagnostic procedures. Not for resale without express authorization. Products are warranted to operate or perform substantially in conformance with published Product specifications in effect at the time of sale, as set forth in the Production documentation, specifications and/or accompanying package inserts ("Documentation"). No claim of suitability for use in applications regulated by FDA is made. The warranty provided herein is valid only when used by properly trained individuals. Unless otherwise stated in the Documentation, this warranty is limited to one year from date of shipment when the Product is subjected to normal, proper and intended usage. This warranty does not extend to anyone other than the Buyer. Any model or sample furnished to Buyer is merely illustrative of the general type and quality of goods and does not represent that any Product will conform to such model or sample. NO OTHER WARRANTIES, EXPRESS OR IMPLIED, ARE GRANTED INCLUDING WITHOUT LIMITATION, IMPLIED WARRANTIES OF MERCHANTABILITY, FITNESS FOR ANY PARTICULAR PURPOSE, OR NON INFRINGEMENT. BUYER'S EXCLUSIVE REMEDY FOR NON-CONFORMING PRODUCTS DURING THE WARRANTY PERIOD IS LIMITED TO REPAIR, REPLACEMENT OF OR REFUND FOR THE NON-CONFORMING PRODUCT(S) AT SELLER'S SOLE OPTION. THERE IS NO OBLIGATION TO REPAIR, REPLACE OR REFUND FOR PRODUCTS AS THE RESULT OF (I) ACCIDENT, DISASTER OR EVENT OF FORCE MAJEURE, (II) MISUSE, FAULT OR NEGLIGENCE OF OR BY BUYER, (III) USE OF THE PRODUCTS IN A MANNER FOR WHICH THEY WERE NOT DESIGNED, OR (IV) IMPROPER STORAGE AND HANDLING OF THE PRODUCTS. Unless otherwise expressly stated on the Product or in the documentation accompanying the Product, the Product is intended for research only and is not to be used for any other purpose, including without limitation, unauthorized commercial uses, in vitro diagnostic uses, ex vivo or in vivo therapeutic uses, or any type of consumption by or application to human or animals.