

beta Tubulin Loading Control Monoclonal Antibody (BT7R), DyLight 800 4X PEG

Product Details	
Size	50 µL
Species Reactivity	Human, Mouse, Non-human primate, Rat
Host/Isotype	Mouse / IgG2a
Class	Monoclonal
Type	Antibody
Clone	BT7R
Conjugate	DyLight 800 4X PEG
Immunogen	KLH conjugated peptide of the N-terminus of Beta-Tubulin.
Form	Liquid
Concentration	1 mg/mL
Purification	Protein A
Storage buffer	MES with proprietary stabilizer
Storage conditions	4° C, do not freeze
RRID	AB_2537826

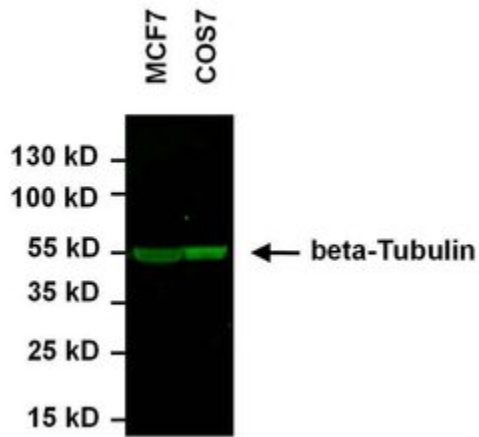
Applications	Tested Dilution	Publications
Western Blot (WB)	1:500-1:1,000	-

Product Specific Information

MA5-16308-D800 detects bet-Tubulin from various species. MA5-16308-D800 has been successfully used for fluorescent detection of beta-Tubulin in Western Blotting.

DyLight 800 4X PEG has an excitation/emission of 783/797 nm.

Product Images For beta Tubulin Loading Control Monoclonal Antibody (BT7R), DyLight 800 4X PEG



beta Tubulin Loading Control Antibody (MA5-16308-D800) in WB

Western blot analysis of beta-Tubulin was performed by loading 75 µg of the indicated cell lysates onto a 4-20% Tris-HCl polyacrylamide gel. Proteins were transferred to a low fluorescence PVDF membrane (Product # 22860) and blocked with SEA BLOCK Blocking Buffer (Product # 37527) for at least 1 hour. The membrane was probed with a DyLight 800-conjugated beta-Tubulin monoclonal antibody (Product # MA5-16308-D800) at a dilution of 1:500 overnight at 4°C on a rocking platform, and washed in TBS-0.1% Tween-20. Fluorescent detection was performed using a near IR imaging system.

For Research Use Only. Not for use in diagnostic procedures. Not for resale without express authorization. Products are warranted to operate or perform substantially in conformance with published Product specifications in effect at the time of sale, as set forth in the Production documentation, specifications and/or accompanying package inserts ("Documentation"). No claim of suitability for use in applications regulated by FDA is made. The warranty provided herein is valid only when used by properly trained individuals. Unless otherwise stated in the Documentation, this warranty is limited to one year from date of shipment when the Product is subjected to normal, proper and intended usage. This warranty does not extend to anyone other than the Buyer. Any model or sample furnished to Buyer is merely illustrative of the general type and quality of goods and does not represent that any Product will conform to such model or sample. NO OTHER WARRANTIES, EXPRESS OR IMPLIED, ARE GRANTED INCLUDING WITHOUT LIMITATION, IMPLIED WARRANTIES OF MERCHANTABILITY, FITNESS FOR ANY PARTICULAR PURPOSE, OR NON-INFRINGEMENT. BUYER'S EXCLUSIVE REMEDY FOR NON-CONFORMING PRODUCTS DURING THE WARRANTY PERIOD IS LIMITED TO REPAIR, REPLACEMENT OF OR REFUND FOR THE NON-CONFORMING PRODUCT(S) AT SELLER'S SOLE OPTION. THERE IS NO OBLIGATION TO REPAIR, REPLACE OR REFUND FOR PRODUCTS AS THE RESULT OF (I) ACCIDENT, DISASTER OR EVENT OF FORCE MAJEURE, (II) MISUSE, FAULT OR NEGLIGENCE OF OR BY BUYER, (III) USE OF THE PRODUCTS IN A MANNER FOR WHICH THEY WERE NOT DESIGNED, OR (IV) IMPROPER STORAGE AND HANDLING OF THE PRODUCTS. Unless otherwise expressly stated on the Product or in the documentation accompanying the Product, the Product is intended for research only and is not to be used for any other purpose, including without limitation, unauthorized commercial uses, in vitro diagnostic uses, ex vivo or in vivo therapeutic uses, or any type of consumption by or application to human or animals.