

Ly-6G/Ly-6C Monoclonal Antibody (RB6-8C5), PE-Cyanine5, eBioscience™

Product Details	
Size	100 µg
Species Reactivity	Mouse
Published Species	Dog, Mouse
Host/Isotype	Rat / IgG2b, kappa
Recommended Isotype Control	Rat IgG2b kappa Isotype Control (eB149/10H5), PE-Cyanine5, eBioscience™
Class	Monoclonal
Type	Antibody
Clone	RB6-8C5
Conjugate	PE-Cyanine5
Form	Liquid
Concentration	0.2 mg/mL
Purification	Affinity chromatography
Storage buffer	PBS, pH 7.2
Contains	0.09% sodium azide
Storage conditions	4° C, store in dark, DO NOT FREEZE!
RRID	AB_468813

Applications	Tested Dilution	Publications
Flow Cytometry (Flow)	0.125 µg/test	85 Publications
Functional Assay (FN)	-	2 Publications
Miscellaneous PubMed (Misc)	-	1 Publication

Product Specific Information

Description: The RB6-8C5 monoclonal antibody reacts with mouse Ly-6G, a 21-25 kDa protein also known as the myeloid differentiation antigen Gr-1. A GPI-linked protein, Gr-1 is expressed by the myeloid lineage in a developmentally regulated manner in the bone marrow. While monocytes only express Gr-1 transiently during their bone marrow development, the expression of Gr-1 on bone marrow granulocytes as well as on peripheral neutrophils is a good marker for these populations.

eBioscience testing indicates that in the bone marrow and lysed whole blood, the antibody clone RB6-8C5 also stains cells that express the highest levels of Ly6c (as defined by staining with antibody clone HK1.4). It is recommended that 1A8-Ly6G (cat. 9668) be used when looking at Ly-6G specific targets.

Applications Reported: The RB6-8C5 antibody has been reported for use in flow cytometric analysis.

Applications Tested: The RB6-8C5 antibody has been tested by flow cytometric analysis of mouse bone marrow cells and splenocytes. This can be used at less than or equal to 0.125 µg per test. A test is defined as the amount (µg) of antibody that will stain a cell sample in a final volume of 100 µL. Cell number should be determined empirically but can range from 10⁵ to 10⁸ cells

/test. It is recommended that the antibody be carefully titrated for optimal performance in the assay of interest.

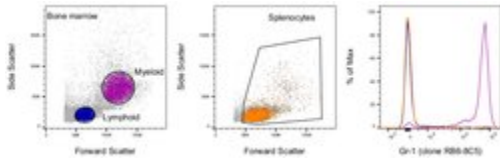
Light sensitivity: This tandem dye is sensitive photo-induced oxidation. Please protect this vial and stained samples from light.

Fixation: Samples can be stored in IC Fixation Buffer (cat. 00-8222) (100 μ L cell sample + 100 μ L IC Fixation Buffer) or 1-step Fix/Lyse Solution (cat. 00-5333) for up to 3 days in the dark at 4°C with minimal impact on brightness and FRET efficiency/compensation. Some generalizations regarding fluorophore performance after fixation can be made, but clone specific performance should be determined empirically.

Excitation: 488-561 nm; Emission: 667 nm; Laser: Blue Laser, Green Laser, Yellow-Green Laser.

Filtration: 0.2 μ m post-manufacturing filtered.

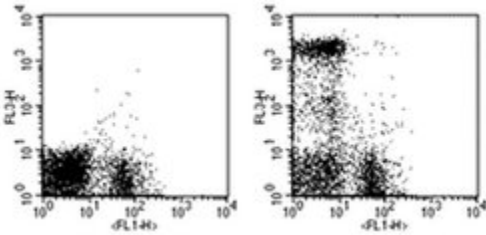
Advanced Verification Data



Ly-6G/Ly-6C Antibody (15-5931-82)

Staining of mouse splenocytes and bone marrow cells. As expected based on known relative expression patterns, Gr-1 clone RB6-8C5 stains cells in the bone marrow myeloid gate and not in the splenocytes gate or bone marrow lymphoid gate. Details: Balb/c bone marrow cells (left) and splenocytes (middle) were surface stained with Gr-1 (clone RB6-8C5) followed by staining with 7-AAD. Viable bone marrow cells in the lymphoid (blue histogram) and myeloid (purple histogram) gates and viable splenocytes (orange histogram) were used for analysis. Relative expression validation info.

Product Images For Ly-6G/Ly-6C Monoclonal Antibody (RB6-8C5), PE-Cyanine5, eBioscience™



Ly-6G/Ly-6C Antibody (15-5931-82) in Flow

Staining of mouse bone marrow cells with Anti-Human/Mouse CD45R (B220) FITC (Product # 11-0452-82) and 0.25 μ g of Rat IgG2b Isotype Control PE-Cyanine5 (Product # 15-4031-82) (left) or 0.06 μ g of Anti-Mouse Ly-6G (Gr-1) PE-Cyanine5 (right).

View more figures on thermofisher.com

Flow Cytometry (85)

Frontiers in immunology

Bacterial and Fungal Toll-Like Receptor Activation Elicits Type I IFN Responses in Mast Cells.

"Published figure using Ly-6G/Ly-6C monoclonal antibody (Product # 15-5931-82) in Flow Cytometry"

Authors: Kornstädt L,Pierre S,Weigert A,Ebersberger S,Schäufele T,J,Kolbinger A,Schmid T,Cohnen J,Thomas D, Ferreirós N,Brüne B,Ebersberger I,Scholich K

Species
Not Applicable

Dilution
Not Cited

Year
2021

Journal of nuclear medicine : official publication, Society of Nuclear Medicine

-Tocotrienol-Loaded Liposomes for Radioprotection from Hematopoietic Side Effects Caused by Radiotherapeutic Drugs.

"15-5931-81 was used in Flow Cytometry to report a novel radioprotector drug, a liposomal formulation of gamma-tocotrienol (GT3), or GT3-Nano for short, to mitigate bone marrow radiation damage during targeted radionuclide therapy (TRT)."

Authors: Lee SG,Kalidindi TM,Lou H,Gangangari K,Punzalan B,Bitton A,Lee CJ,Vargas HA,Park S,Bodei L,Kharas MG, Singh VK,Kishore Pillarsetty NV,Larson SM

Species
Mouse

Dilution
Not Cited

Year
2021

[View more Flow references on thermofisher.com](#)

Functional Assay (2)

Cancer research

Listeria monocytogenes promotes tumor growth via tumor cell toll-like receptor 2 signaling.

Authors: Huang B,Zhao J,Shen S,Li H,He KL,Shen GX,Mayer L,Unkeless J,Li D,Yuan Y,Zhang GM,Xiong H,Feng ZH

Species
Not Applicable

Dilution
Not Cited

Year
2007

American journal of physiology. Lung cellular and molecular physiology

Hemorrhagic shock-activated neutrophils augment TLR4 signaling-induced TLR2 upregulation in alveolar macrophages: role in hemorrhage-primed lung inflammation.

Authors: Fan J,Li Y,Vodovotz Y,Billiari TR,Wilson MA

Species
Not Applicable

Dilution
Not Cited

Year
2006

More applications with references on thermofisher.com

Misc (1)

For Research Use Only. Not for use in diagnostic procedures. Not for resale without express authorization. Products are warranted to operate or perform substantially in conformance with published Product specifications in effect at the time of sale, as set forth in the Production documentation, specifications and/or accompanying package inserts ("Documentation"). No claim of suitability for use in applications regulated by FDA is made. The warranty provided herein is valid only when used by properly trained individuals. Unless otherwise stated in the Documentation, this warranty is limited to one year from date of shipment when the Product is subjected to normal, proper and intended usage. This warranty does not extend to anyone other than the Buyer. Any model or sample furnished to Buyer is merely illustrative of the general type and quality of goods and does not represent that any Product will conform to such model or sample. NO OTHER WARRANTIES, EXPRESS OR IMPLIED, ARE GRANTED INCLUDING WITHOUT LIMITATION, IMPLIED WARRANTIES OF MERCHANTABILITY, FITNESS FOR ANY PARTICULAR PURPOSE, OR NON INFRINGEMENT. BUYER'S EXCLUSIVE REMEDY FOR NON-CONFORMING PRODUCTS DURING THE WARRANTY PERIOD IS LIMITED TO REPAIR, REPLACEMENT OF OR REFUND FOR THE NON-CONFORMING PRODUCT(S) AT SELLER'S SOLE OPTION. THERE IS NO OBLIGATION TO REPAIR, REPLACE OR REFUND FOR PRODUCTS AS THE RESULT OF (I) ACCIDENT, DISASTER OR EVENT OF FORCE MAJEURE, (II) MISUSE, FAULT OR NEGLIGENCE OF OR BY BUYER, (III) USE OF THE PRODUCTS IN A MANNER FOR WHICH THEY WERE NOT DESIGNED, OR (IV) IMPROPER STORAGE AND HANDLING OF THE PRODUCTS. Unless otherwise expressly stated on the Product or in the documentation accompanying the Product, the Product is intended for research only and is not to be used for any other purpose, including without limitation, unauthorized commercial uses, in vitro diagnostic uses, ex vivo or in vivo therapeutic uses, or any type of consumption by or application to human or animals.