



Website: www.cwbiosciences.com
Technical Support: service@cwbiosciences.com
Customer Service: 617-800-6495



SuperStain DNA Marker

Catalog Number: CW2641S (100 preps)
CW2641M (500 preps)

Storage Condition: Store at -20°C in dark.

Kit Components:

Component	CW2641S (100 preps)	CW2641M (500 preps)
SuperStain DNA Marker	500 ul	5x500 ul

Product Introduction:

SuperStain dye is added to the conventional Super DNA Marker to make this product. This dye is a biological macromolecule that cannot penetrate the cell membrane into the cell. Compared to the strong mutagenicity of EB, it is a safe and non-toxic nucleic acid dye. When using this product, you do not need to add EB or other nucleic acid dyes into the gel, and you can directly load the marker for gel electrophoresis. Due to the same spectral characteristics of SuperStain and EB, there is no need to change the filter and observation device. It can be detected by normal UV excitation, and it is very convenient and flexible to use.

Not included in the kit:

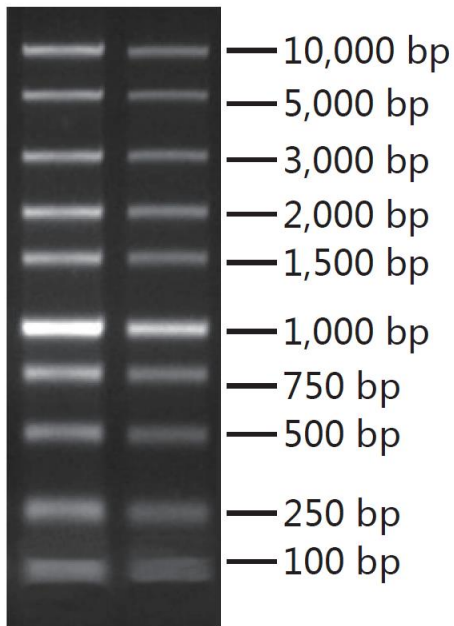
Agarose; TAE/TBE buffer (CW0663S/CW0664S); 6xSuperStain Loading Buffer (CW2636S);

Preparation before the experiment and important notes:

1. When electrophoresis is performed, since no additional nucleic acid dye is required to add in the gel, other DNA samples can be prepared using our 6x SuperStain Loading Buffer.
2. Since this dye does not need to be added to the gel, the prepared gel can be stored for a longer period of time.

Protocol:

1. Make an appropriate concentration of agarose gel without nucleic acid dye.
2. Load 5 μ l of this product directly into the sample well for routine electrophoresis and image acquisition.



5 μ l or 2.5 μ l of this product was loaded on a agaros gel without nucleic acid dye.