
MGIEasy Stool Sample Collection Kit Instruction (Standard Version)

Cat.: 1000003702 Kit version: V1.0 Instruction version: A0

【 Product Name 】

MGIEasy Stool Sample Collection Kit (Standard Version)

【 Package 】

1 Prep / Kit

【 Application 】

The stool sample collection and preservative kit consists of prefilled stabilizer tube and swab for fast, painless & non-invasive stool collection. The patented stabilizer is designed to provide highest DNA yield and quality. It can eliminate degradation and provide intact and stable nucleic acid of the microbial sample at room temperature. The collected samples are suitable for downstream applications such as qPCR and sequencing after extraction.

【 Components 】

| Name | Package and quantity |
|-----------------------------------|-----------------------------|
| Collection swab | 1 each |
| Collection tube (with stabilizer) | 2mL stabilizer in 5mL tube |
| Sealable bag | 1 each |
| Sampling paper | 1 piece |
| Disposable glove | 1 pair |

【 Transport and storage conditions 】

This kit should be shipped and stored in a dry and cool place at room temperature (lower than 40°C).

The collected sample and be stabilized for 7-14 days at room temperature.

Expire date: on the bottom of the package.

【 Collection procedure 】

1. Please open the toilet cover, fix the sampling paper onto the toilet (as the left figure shown) and make the center hollow to collect the stool. Defecate on the paper center, and do not contaminate the paper by urine.

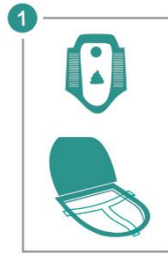


Figure 1 Diagram for step 1

2. Wear the disposable glove and take out the swab. Stab the swab into the stool entirely and ensure the swab color changed to collect enough stool sample. Avoid contacting with others contaminant, such as urine.

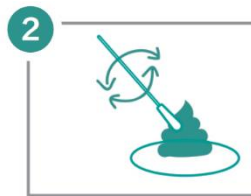


Figure 2 Diagram for step 2

3. Open the cap of stabilizer tube, push the hook to let the swab head with sample into the stabilizer.

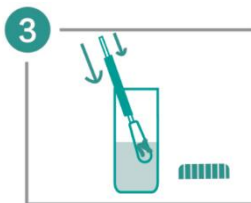


Figure 3 Diagram for step 3

4. Screw the cap, put the stabilizer tube into the sealable bag.



Figure 4 Diagram for step 4

【 Cautions 】

5. This product should be used for research use only, please read the manual carefully before use.
6. Please defecate in 10 minutes before sample collection.
7. Collect stool the same size as soybean enough.
8. Avoid to expose skin and eyes to all the reagents. Don't spill or swallow the stabilizer. Keep out of the reach

of children. Please wash with plenty of water immediately and go to the hospital when this happened.

9. All the reagents and waste materials should be disposed according to relevant laws and regulations.

[Information]

Manufacturer: MGI Tech Co., Ltd

Address : Main Building and Second floor of No.11 Building, Beishan Industrial Zone, Yantian District, Shenzhen, 518083, Guangdong, China

Service: 4000-966-988

Support: MGI-service@genomics.cn

Website: en.mgi-tech.com