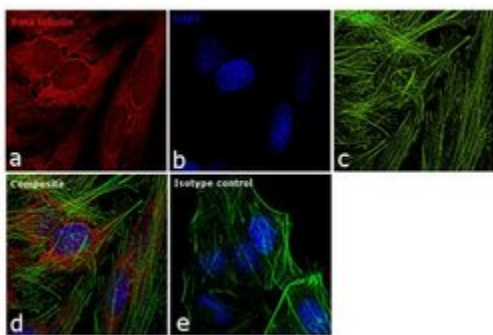


beta Tubulin Loading Control Monoclonal Antibody (BT7R), Alexa Fluor 647

Product Details	
Size	50 µL
Species Reactivity	Chicken, Human, Mouse, Non-human primate, Rabbit, Rat
Published Species	Mouse
Host/Isotype	Mouse / IgG2a
Class	Monoclonal
Type	Antibody
Clone	BT7R
Conjugate	Alexa Fluor® 647
Immunogen	KLH conjugated peptide of the N-terminus of Beta-Tubulin
Form	Liquid
Concentration	1 mg/mL
Purification	Protein A
Storage buffer	PBS with 1mg/mL BSA
Contains	0.05% sodium azide
Storage conditions	4° C, do not freeze
RRID	AB_2609651

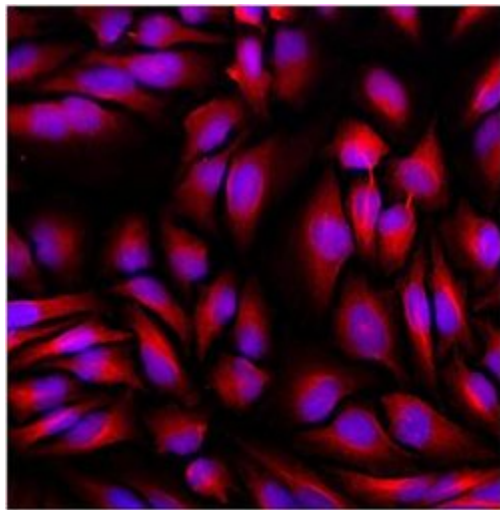
Applications	Tested Dilution	Publications
Western Blot (WB)	1:500	-
Immunocytochemistry (ICC/IF)	1:25-1:100	1 Publication

Product Images For beta Tubulin Loading Control Monoclonal Antibody (BT7R), Alexa Fluor 647



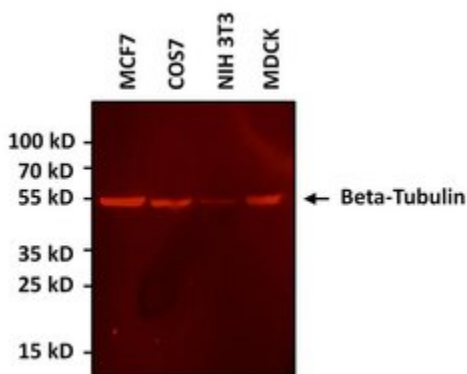
beta Tubulin Loading Control Antibody (MA5-16308-A647) in ICC/IF

Immunofluorescence analysis of beta tubulin was performed using 70% confluent log phase HeLa cells. The cells were fixed with 4% paraformaldehyde for 10 minutes, permeabilized with 0.1% Triton™ X-100 for 15 minutes, and blocked with 1% BSA for 1 hour at room temperature. The cells were labeled with beta Tubulin Loading Control Monoclonal Antibody (BT7R), Alexa Fluor 647 (Product # MA5-16308-A647) at 1:25 dilution in 0.1% BSA and incubated at 4 degree Celsius overnight (Panel a: red). Nuclei (Panel b: blue) were stained with SlowFade® Gold Antifade Mountant with DAPI (Product # S36938). F-actin (Panel c: green) was stained with Alexa Fluor® 488 Phalloidin (Product # A12379, 1:300). Panel d represents the merged image showing cytoplasmic localization. Panel e shows the isotype control. The images were captured at 60X magnification.



beta Tubulin Loading Control Antibody (MA5-16308-A647) in ICC/IF

Immunofluorescent analysis of beta tubulin (red) in HeLa cells. The cells were fixed with 4% paraformaldehyde for 15 minutes, permeabilized with 0.1% Triton X-100 in PBS for 15 minutes and blocked with 3% Blocker BSA (Product # 37525) in PBS for 30 minutes at room temperature. Cells were stained with AlexaFluor 647 conjugated beta-tubulin monoclonal antibody (Product # MA5-16308-A647) at a dilution of 1:50 for 1 hour at room temperature. Nuclei (blue) were stained with Hoechst 33342 dye (Product # 62249). Images were taken on a Thermo Scientific ToxInsight at 20X magnification.



beta Tubulin Loading Control Antibody (MA5-16308-A647) in WB

Western blot analysis of beta-Tubulin was performed by loading various cell lysates onto a 4-20% Tris-HCl polyacrylamide gel. Proteins were transferred to a low fluorescence PVDF membrane and blocked with Sea Block blocking buffer for at least 1 hour. The membrane was probed with a AlexaFluor647-conjugated beta-Tubulin monoclonal antibody (Product # MA5-16308-A647) at a dilution of 1:500 for 1 hour at room temperature on a rocking platform and washed in TBS-0.1% Tween-20. Detection was performed using a fluorescence imaging system.

Immunocytochemistry (1)

Molecular cancer research : MCR

Cell Cycle-Dependent Tumor Engraftment and Migration Are Enabled by Aurora-A.

"MA5-16308-A647 was used in Immunocytochemistry-immunofluorescence to characterise an Aurora kinase-A/TPX2 /hyaluronan-mediated motility receptor molecular axis that intersects cell-cycle progression and cell migration."

Authors: Chu TLH,Connell M,Zhou L,He Z,Won J,Chen H,Rahavi SMR,Mohan P,Nemirovsky O,Fotovati A,Pujana MA, Reid GSD,Nielsen TO,Pante N,Maxwell CA

Species
Mouse

Dilution
1:100

Year
2018

For Research Use Only. Not for use in diagnostic procedures. Not for resale without express authorization. Products are warranted to operate or perform substantially in conformance with published Product specifications in effect at the time of sale, as set forth in the Production documentation, specifications and/or accompanying package inserts ("Documentation"). No claim of suitability for use in applications regulated by FDA is made. The warranty provided herein is valid only when used by properly trained individuals. Unless otherwise stated in the Documentation, this warranty is limited to one year from date of shipment when the Product is subjected to normal, proper and intended usage. This warranty does not extend to anyone other than the Buyer. Any model or sample furnished to Buyer is merely illustrative of the general type and quality of goods and does not represent that any Product will conform to such model or sample. NO OTHER WARRANTIES, EXPRESS OR IMPLIED, ARE GRANTED INCLUDING WITHOUT LIMITATION, IMPLIED WARRANTIES OF MERCHANTABILITY, FITNESS FOR ANY PARTICULAR PURPOSE, OR NON INFRINGEMENT. BUYER'S EXCLUSIVE REMEDY FOR NON-CONFORMING PRODUCTS DURING THE WARRANTY PERIOD IS LIMITED TO REPAIR, REPLACEMENT OF OR REFUND FOR THE NON-CONFORMING PRODUCT(S) AT SELLER'S SOLE OPTION. THERE IS NO OBLIGATION TO REPAIR, REPLACE OR REFUND FOR PRODUCTS AS THE RESULT OF (I) ACCIDENT, DISASTER OR EVENT OF FORCE MAJEURE, (II) MISUSE, FAULT OR NEGLIGENCE OF OR BY BUYER, (III) USE OF THE PRODUCTS IN A MANNER FOR WHICH THEY WERE NOT DESIGNED, OR (IV) IMPROPER STORAGE AND HANDLING OF THE PRODUCTS. Unless otherwise expressly stated on the Product or in the documentation accompanying the Product, the Product is intended for research only and is not to be used for any other purpose, including without limitation, unauthorized commercial uses, in vitro diagnostic uses, ex vivo or in vivo therapeutic uses, or any type of consumption by or application to human or animals.