

Saliva DNA Sample Collection Kit

Professional and reliable collection package

- ✓ Collection Kit
- ✓ Saliva collecting funnel
- ✓ 5 mL sample tube with 1 mL preservative solution
- ✓ Sample barcode



Preserve your genomic DNA stably at room temperature

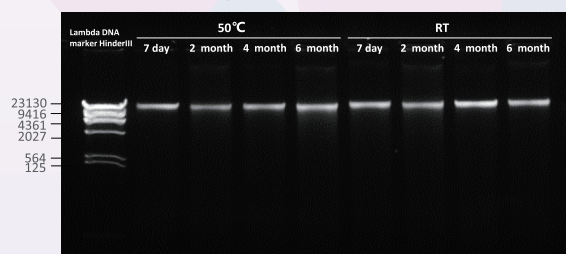
Help you to discover genome

Accurate data originated from professional and reliable technology

- Easy and noninvasive operation
- Professional and reliable preservative reagent
- Applicable for PCR, ARRAY, Sequencing

Performance

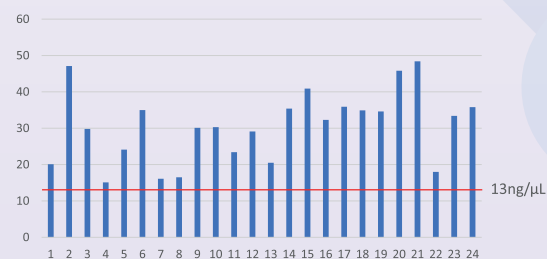
Integrity of extracted DNA



Yield of extracted DNA from 400 μ L sample

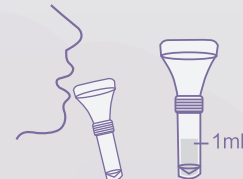


Concentration of extracted DNA



Collecting workflow

- 1 Rinse your mouth 30 minutes before collecting
- 2 Spit 1 mL saliva into the collector (exclude the foam)



- 3 Transfer the preservative solution into the tube, mix thoroughly
- 4 Screw the cap and stick the barcode



Information

Cat. No.	1000025954
Certification	RUO
Sample stable period at room temperature	>1 year
Specification	1 prep / kit
Recommended collected saliva volume	1 mL
Integrity of extracted DNA	>23 kb
Yield of extracted DNA	5-50 μ g / mL saliva
OD260/280 of extracted DNA	>1.60
WGS mapping rate (based on MGI's sequencer)	>90%
Microbe content	<10%

MGI Tech Co.,Ltd.

Address Building 11, Beishan Industrial Zone, Yantian District, Shenzhen, China

Telephone 400-096-6988

Website mgi-tech.com

Service MGI-service@mgi-tech.com

Version: October 2021 | MGPD2021002



<https://www.linkedin.com/company/mgi-bgi>



https://twitter.com/MGI_BGI

