

Rat IgG1 kappa Isotype Control (eBRG1), Biotin, eBioscience™

Product Details	
Size	100 µg
Host/Isotype	Rat / IgG1, kappa
Class	Control
Type	Isotype Control
Clone	eBRG1
Conjugate	Biotin
Form	Liquid
Concentration	0.5 mg/mL
Purification	Affinity chromatography
Storage buffer	PBS, pH 7.2, with 0.1% gelatin
Contains	0.09% sodium azide
Storage conditions	4° C, store in dark, DO NOT FREEZE!
RRID	AB_470081

Applications	Tested Dilution	Publications
Immunohistochemistry (IHC)	Assay-Dependent	-
Immunocytochemistry (ICC/IF)	Assay-Dependent	-
Flow Cytometry (Flow)	Assay-Dependent	-
Control (Ctrl)	Assay-Dependent	-

Product Specific Information

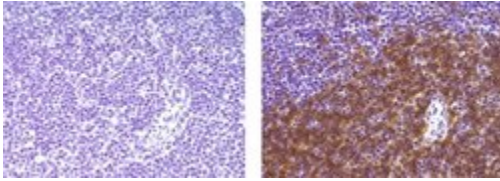
Description: The monoclonal rat IgG1, kappa is useful as an isotype control immunoglobulin.

Applications Reported: This rat IgG1 isotype control can be used in immunohistochemistry, immunocytochemistry, flow cytometric analysis, and ELISA.

Applications Tested: This rat IgG1 isotype control has been used by flow cytometric analysis of mouse splenocyte suspension and can be used at the same concentration as the experimental antibody.

Filtration: 0.2 µm post-manufacturing filtered.

Product Images For Rat IgG1 kappa Isotype Control (eBRG1), Biotin, eBioscience™



Rat IgG1 kappa Isotype Control (13-4301-82) in IHC (P)

Immunohistochemistry of formalin-fixed paraffin embedded mouse spleen using 10 µg/mL of Rat IgG1 K Isotype Control Biotin (left) or 10 µg/mL of Anti-Mouse CD4 Biotin (right) followed by Streptavidin HRP and DAB visualization. Nuclei are counterstained with hematoxylin.

4 References

A sustained type I IFN-neutrophil-IL-18 axis drives pathology during mucosal viral infection. *Elife* (2021)

The Ser/Thr kinase MAP4K4 drives c-Met-induced motility and invasiveness in a cell-based model of SHH medulloblastoma. Springerplus (2015)

In vitro multilineage differentiation and self-renewal of single pancreatic colony-forming cells from adult C57BL/6 mice. *Stem Cells Dev* (2014)

For Research Use Only. Not for use in diagnostic procedures. Not for resale without express authorization. Products are warranted to operate or perform substantially in conformance with published Product specifications in effect at the time of sale, as set forth in the Production documentation, specifications and/or accompanying package inserts ("Documentation"). No claim of suitability for use in applications regulated by FDA is made. The warranty provided herein is valid only when used by properly trained individuals. Unless otherwise stated in the Documentation, this warranty is limited to one year from date of shipment when the Product is subjected to normal, proper and intended usage. This warranty does not extend to anyone other than the Buyer. Any model or sample furnished to Buyer is merely illustrative of the general type and quality of goods and does not represent that any Product will conform to such model or sample. NO OTHER WARRANTIES, EXPRESS OR IMPLIED, ARE GRANTED INCLUDING WITHOUT LIMITATION, IMPLIED WARRANTIES OF MERCHANTABILITY, FITNESS FOR ANY PARTICULAR PURPOSE, OR NON INFRINGEMENT. BUYER'S EXCLUSIVE REMEDY FOR NON-CONFORMING PRODUCTS DURING THE WARRANTY PERIOD IS LIMITED TO REPAIR, REPLACEMENT OF OR REFUND FOR THE NON-CONFORMING PRODUCT(S) AT SELLER'S SOLE OPTION. THERE IS NO OBLIGATION TO REPAIR, REPLACE OR REFUND FOR PRODUCTS AS THE RESULT OF (I) ACCIDENT, DISASTER OR EVENT OF FORCE MAJEURE, (II) MISUSE, FAULT OR NEGLIGENCE OF OR BY BUYER, (III) USE OF THE PRODUCTS IN A MANNER FOR WHICH THEY WERE NOT DESIGNED, OR (IV) IMPROPER STORAGE AND HANDLING OF THE PRODUCTS. Unless otherwise expressly stated on the Product or in the documentation accompanying the Product, the Product is intended for research only and is not to be used for any other purpose, including without limitation, unauthorized commercial uses, in vitro diagnostic uses, ex vivo or in vivo therapeutic uses, or any type of consumption by or application to human or animals.