

# beta Actin Monoclonal Antibody (8H10D10)

## Product Details

Size	100 µL
Species Reactivity	Hamster, Human, Mouse, Non-human primate, Rat
Published Species	Mouse, Human
Host/Isotype	Mouse / IgG2b
Class	Monoclonal
Type	Antibody
Clone	8H10D10
Conjugate	Unconjugated
Immunogen	Synthetic peptide corresponding to amino-terminal residues of human beta-Actin, conjugated to KLH.
Form	Liquid
Concentration	Conc. Not Determined
Storage buffer	ascites
Contains	0.03% sodium azide
Storage conditions	Store at 4°C short term. For long term storage, store at -20°C, avoiding freeze/thaw cycles.
RRID	AB_11001306

Applications	Tested Dilution	Publications
Western Blot (WB)	1:500-1:2,000	4 Publications
Immunohistochemistry (Paraffin) (IHC (P))	-	1 Publication
Immunocytochemistry (ICC/IF)	1:100-1:1,000	-
Flow Cytometry (Flow)	1/200 - 1/400	-
ELISA (ELISA)	1:10,000	-

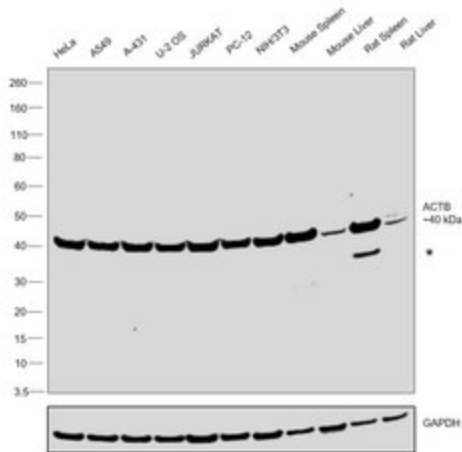
## Product Specific Information

MA5-15452 targets beta-Actin in FACS, IF, and WB applications and shows reactivity with Hamster, Human, mouse, Non-human primate, and Rat samples.

The MA5-15452 immunogen is synthetic peptide corresponding to amino-terminal residues of human beta-Actin, conjugated to KLH.

MA5-15452 detects beta-Actin which has a predicted molecular weight of approximately 42kDa.

## Advanced Verification Data



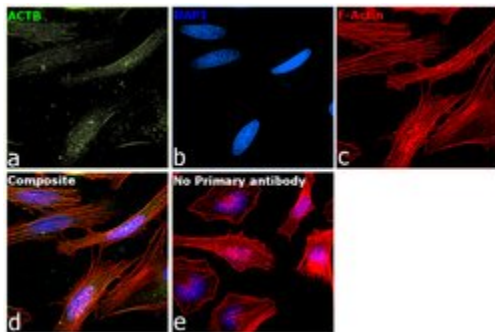
### beta Actin Antibody (MA5-15452)

Antibody specificity was demonstrated by detection of differential basal expression of the target across tissues tested owing to their inherent genetic constitution. Relative expression of Actin, cytoplasmic 1 was observed in Mouse Spleen and Rat Spleen in comparison to Mouse Liver and Rat Liver using Anti-beta Actin Monoclonal Antibody (8H10D10) (Product # MA5-15452) in Western Blot. doi:10.1038/bcj.2014.18  
Relative expression validation info.

## Product Images For beta Actin Monoclonal Antibody (8H10D10)

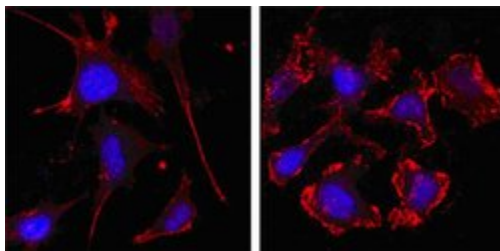
### beta Actin Antibody (MA5-15452) in ICC/IF

Immunofluorescence analysis of Actin, cytoplasmic 1 was performed using 70% confluent log phase HeLa cells. The cells were fixed with 4% paraformaldehyde for 5 minutes, permeabilized with 0.1% Triton™ X-100 for 10 minutes, and blocked with 2% BSA for 45 minutes at room temperature. The cells were labeled with beta Actin Monoclonal Antibody (8H10D10) (Product # MA5-15452) at 1:100 dilution in 0.1% BSA, incubated at 4 degree celsius overnight and then labeled with Donkey anti-Mouse IgG (H+L) Highly Cross-Adsorbed Secondary Antibody, Alexa Fluor Plus 647 (Product # A32787), (1:2000 dilution), for 45 minutes at room temperature (Panel a: Green). Nuclei (Panel b:Blue) were stained with ProLong™ Diamond Antifade Mountant with DAPI (Product # P36962). F-actin (Panel c: Red) was stained with Rhodamine Phalloidin (Product # R415, 1:300). Panel d represents the merged image showing Cytoskeleton localization. Panel e represents control cells with no primary antibody to assess background. The images were captured at 60x magnification.



### beta Actin Antibody (MA5-15452) in ICC/IF

Immunofluorescence analysis of SKBR-3 (left) and A549 (right) cells using beta-Actin monoclonal antibody (Product # MA5-15452) (Red). Blue: DRAQ5 fluorescent DNA dye. Red: the secondary Ab is Cy3-Goat anti mouse IgG



View more figures on [thermofisher.com](http://thermofisher.com)

## 5 References

### Western Blot (4)

eLife

#### The hepcidin regulator erythroferrone is a new member of the erythropoiesis-iron-bone circuitry.

"MA5-15452 was used in Western Blot to show that ERFE exerts an osteoprotective effect by modulating BMP signaling in osteoblasts, decreasing RANKL production to limit osteoclastogenesis, and prevents excessive bone loss during expanded erythropoiesis in -thalassemia."

Authors: Castro-Mollo M, Gera S, Ruiz-Martinez M, Feola M, Gumerova A, Planoutene M, Clementelli C, Sangkhae V, Casu C, Kim SM, Ostland V, Han H, Nemeth E, Fleming R, Rivella S, Lizneva D, Yuen T, Zaidi M, Ginzburg Y

**Species**  
Mouse

**Dilution**  
1:1000

**Year**  
2021

Cancer cell

#### Cathepsin S Regulates Antigen Processing and T Cell Activity in Non-Hodgkin Lymphoma.

"MA5-15452 was used in Western Blotting to find that follicular lymphoma patients harbor a recurrent hotspot mutation targeting tyrosine 132 (Y132D) in cathepsin S (CTSS) that enhances protein activity."

Authors: Dheilly E, Battistello E, Katanayeva N, Sungalee S, Michaux J, Duns G, Wehrle S, Sordet-Dessimoz J, Mina M, Racle J, Farinha P, Coukos G, Gfeller D, Mottok A, Kridel R, Correia BE, Steidl C, Bassani-Sternberg M, Ciriello G, Zoete V, Oricchio E

**Species**  
Human

**Dilution**  
1:1000

**Year**  
2020

[View more WB references on thermofisher.com](#)

### Immunohistochemistry (Paraffin) (1)

Clinical cancer research : an official journal of the American Association for Cancer Research

#### An Antibody-Drug Conjugate Directed against Lymphocyte Antigen 6 Complex, Locus E (LY6E) Provides Robust Tumor Killing in a Wide Range of Solid Tumor Malignancies.

"MA5-15452 was used in immunohistochemistry - paraffin section to discuss the use of antibody-drug conjugates to deliver cytotoxic agents to tumors"

Authors: Asundi J, Crocker L, Tremayne J, Chang P, Sakanaka C, Tanguay J, Spencer S, Chalasani S, Luis E, Gascoigne K, Desai R, Raja R, Friedman BA, Haverty PM, Polakis P, Firestein R

**Species**  
Human

**Dilution**  
Not Cited

**Year**  
2015

### More applications with references on thermofisher.com

For Research Use Only. Not for use in diagnostic procedures. Not for resale without express authorization. Products are warranted to operate or perform substantially in conformance with published Product specifications in effect at the time of sale, as set forth in the Production documentation, specifications and/or accompanying package inserts ("Documentation"). No claim of suitability for use in applications regulated by FDA is made. The warranty provided herein is valid only when used by properly trained individuals. Unless otherwise stated in the Documentation, this warranty is limited to one year from date of shipment when the Product is subjected to normal, proper and intended usage. This warranty does not extend to anyone other than the Buyer. Any model or sample furnished to Buyer is merely illustrative of the general type and quality of goods and does not represent that any Product will conform to such model or sample. NO OTHER WARRANTIES, EXPRESS OR IMPLIED, ARE GRANTED INCLUDING WITHOUT LIMITATION, IMPLIED WARRANTIES OF MERCHANTABILITY, FITNESS FOR ANY PARTICULAR PURPOSE, OR NON INFRINGEMENT. BUYER'S EXCLUSIVE REMEDY FOR NON-CONFORMING PRODUCTS DURING THE WARRANTY PERIOD IS LIMITED TO REPAIR, REPLACEMENT OF OR REFUND FOR THE NON-CONFORMING PRODUCT(S) AT SELLER'S SOLE OPTION. THERE IS NO OBLIGATION TO REPAIR, REPLACE OR REFUND FOR PRODUCTS AS THE RESULT OF (I) ACCIDENT, DISASTER OR EVENT OF FORCE MAJEURE, (II) MISUSE, FAULT OR NEGLIGENCE OF OR BY BUYER, (III) USE OF THE PRODUCTS IN A MANNER FOR WHICH THEY WERE NOT DESIGNED, OR (IV) IMPROPER STORAGE AND HANDLING OF THE PRODUCTS. Unless otherwise expressly stated on the Product or in the documentation accompanying the Product, the Product is intended for research only and is not to be used for any other purpose, including without limitation, unauthorized commercial uses, in vitro diagnostic uses, ex vivo or in vivo therapeutic uses, or any type of consumption by or application to human or animals.