

CD45RO Monoclonal Antibody (UCHL1), PE-Cyanine7, eBioscience™

Product Details	
Size	100 Tests
Species Reactivity	Human
Published Species	Human
Host/Isotype	Mouse / IgG2a, kappa
Recommended Isotype Control	Mouse IgG2a kappa Isotype Control (eBM2a), PE-Cyanine7, eBioscience™
Class	Monoclonal
Type	Antibody
Clone	UCHL1
Conjugate	PE-Cyanine7
Form	Liquid
Concentration	5 µL/Test
Purification	Affinity chromatography
Storage buffer	PBS, pH 7.2, with 0.1% gelatin, 0.2% BSA
Contains	0.09% sodium azide
Storage conditions	4° C, store in dark, DO NOT FREEZE!
RRID	AB_10718534

Applications	Tested Dilution	Publications
Flow Cytometry (Flow)	5 µL (0.5 µg)/test	10 Publications

Product Specific Information

Description: The UCHL1 monoclonal antibody reacts with human CD45RO, a 180 kDa isoform of CD45. CD45RO is expressed by most thymocytes, activated memory T cells, granulocytes and monocytes. CD22 is a ligand for CD45RO. Expression of CD45RO and CD45RA is used commonly to discriminate subsets of peripheral T cells.

Applications Reported: This UCHL1 antibody has been reported for use in flow cytometric analysis.

Applications Tested: This UCHL1 antibody has been pre-titrated and tested by flow cytometric analysis of normal human peripheral blood cells. This can be used at 5 µL (0.5 µg) per test. A test is defined as the amount (µg) of antibody that will stain a cell sample in a final volume of 100 µL. Cell number should be determined empirically but can range from 10⁵ to 10⁸ cells/test.

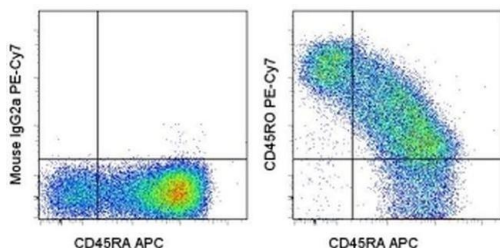
Light sensitivity: This tandem dye is sensitive photo-induced oxidation. Please protect this vial and stained samples from light.

Fixation: Samples can be stored in IC Fixation Buffer (cat. 00-8222) (100 µL cell sample + 100 µL IC Fixation Buffer) or 1-step Fix /Lyse Solution (cat. 00-5333) for up to 3 days in the dark at 4°C with minimal impact on brightness and FRET efficiency /compensation. Some generalizations regarding fluorophore performance after fixation can be made, but clone specific performance should be determined empirically.

Excitation: 488-561 nm; Emission: 775 nm; Laser: Blue Laser, Green Laser, Yellow-Green Laser.

Filtration: 0.2 µm post-manufacturing filtered.

Product Images For CD45RO Monoclonal Antibody (UCHL1), PE-Cyanine7, eBioscience™



CD45RO Antibody (25-0457-42) in Flow

Staining of normal human peripheral blood cells with Anti-Human CD45RA APC (Product # 17-0458-42) and Mouse IgG2a K Isotype Control PE-Cyanine7 (Product # 25-4724-81) (left) or Anti-Human CD45RO PE-Cyanine7 (right). Cells in the lymphocyte gate were used for analysis.

10 References

Flow Cytometry (10)

Oncoimmunology

Development of CAR-T cell therapy for B-ALL using a point-of-care approach.

"25-0457 was used in Flow cytometry/Cell sorting to demonstrate that the POC approach is a viable alternative for the generation and use of CAR-T cells, overcoming the limitations of current manufacturing protocols."

Authors: de Macedo Abdo L,Barros LRC,Saldanha Viegas M,Vieira Codeço Marques L,de Sousa Ferreira P,Chicaybam L,Bonamino MH

Species
Human

Dilution
Not Cited

Year
2021

Immunity

CD8⁺ T cells specific for an immunodominant SARS-CoV-2 nucleocapsid epitope display high naive precursor frequency and TCR promiscuity.

"25-0457-42 was used in Flow Cytometry to demonstrate high naive precursor frequency and TCR diversity within immunodominant B7/N105-specific CD8⁺ T cells and provide insight into SARS-CoV-2-specific T cell origins and subsequent responses."

Authors: Nguyen THO,Rowntree LC,Petersen J,Chua BY,Hensen L,Kedzierski L,van de Sandt CE,Chaurasia P,Tan HX,Habel JR,Zhang W,Allen LF,Earnest L,Mak KY,Juno JA,Wragg K,Mordant FL,Amanat F,Krammer F,Mifsud NA,Doolan DL,Flanagan KL,Sonda S,Kaur J,Wakim LM,Westall GP,James F,Mouhtouris E,Gordon CL,Holmes NE,Smibert OC,Trubiano JA,Cheng AC,Harcourt P,Clifton P,Crawford JC,Thomas PG,Wheatley AK,Kent SJ,Rossjohn J,Torresi J,Kedzierska K

Species
Human

Dilution
Not Cited

Year
2021

[View more Flow references on thermofisher.com](#)

More applications with references on thermofisher.com

For Research Use Only. Not for use in diagnostic procedures. Not for resale without express authorization. Products are warranted to operate or perform substantially in conformance with published Product specifications in effect at the time of sale, as set forth in the Production documentation, specifications and/or accompanying package inserts ("Documentation"). No claim of suitability for use in applications regulated by FDA is made. The warranty provided herein is valid only when used by properly trained individuals. Unless otherwise stated in the Documentation, this warranty is limited to one year from date of shipment when the Product is subjected to normal, proper and intended usage. This warranty does not extend to anyone other than the Buyer. Any model or sample furnished to Buyer is merely illustrative of the general type and quality of goods and does not represent that any Product will conform to such model or sample. NO OTHER WARRANTIES, EXPRESS OR IMPLIED, ARE GRANTED INCLUDING WITHOUT LIMITATION, IMPLIED WARRANTIES OF MERCHANTABILITY, FITNESS FOR ANY PARTICULAR PURPOSE, OR NON INFRINGEMENT. BUYER'S EXCLUSIVE REMEDY FOR NON-CONFORMING PRODUCTS DURING THE WARRANTY PERIOD IS LIMITED TO REPAIR, REPLACEMENT OF OR REFUND FOR THE NON-CONFORMING PRODUCT(S) AT SELLER'S SOLE OPTION. THERE IS NO OBLIGATION TO REPAIR, REPLACE OR REFUND FOR PRODUCTS AS THE RESULT OF (I) ACCIDENT, DISASTER OR EVENT OF FORCE MAJEURE, (II) MISUSE, FAULT OR NEGLIGENCE OF OR BY BUYER, (III) USE OF THE PRODUCTS IN A MANNER FOR WHICH THEY WERE NOT DESIGNED, OR (IV) IMPROPER STORAGE AND HANDLING OF THE PRODUCTS. Unless otherwise expressly stated on the Product or in the documentation accompanying the Product, the Product is intended for research only and is not to be used for any other purpose, including without limitation, unauthorized commercial uses, in vitro diagnostic uses, ex vivo or in vivo therapeutic uses, or any type of consumption by or application to human or animals.