

PTBP1 Monoclonal Antibody (1)

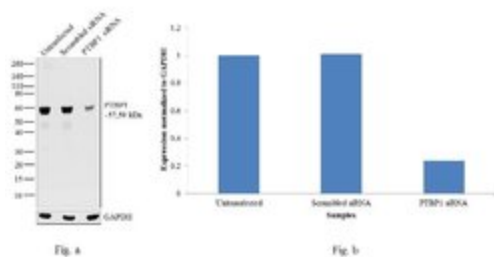
Product Details	
Size	100 µg
Species Reactivity	Human, Mouse, Rat
Published Species	Rat, Virus, Human, Mouse
Host/Isotype	Mouse / IgG1
Class	Monoclonal
Type	Antibody
Clone	1
Conjugate	Unconjugated
Immunogen	Recombinant human PTB protein.
Form	Liquid
Concentration	0.5 mg/mL
Purification	Protein A
Storage buffer	PBS, pH 7.4
Contains	0.1% sodium azide
Storage conditions	-20°C
RRID	AB_2533082

Applications	Tested Dilution	Publications
Western Blot (WB)	1-3 µg/mL	25 Publications
Immunohistochemistry (IHC)	-	2 Publications
Immunocytochemistry (ICC/IF)	2 µg/mL	7 Publications
Flow Cytometry (Flow)	3-5 µg/1x10 ⁶ cells	-
Immunoprecipitation (IP)	Assay-dependent	6 Publications
ChIP assay (ChIP)	-	2 Publications
RNA Immunoprecipitation (RIP)	Assay-dependent	5 Publications
Miscellaneous PubMed (Misc)	-	1 Publication

Product Specific Information

This antibody reacts with the C-terminus of the human and rodent PTB protein.

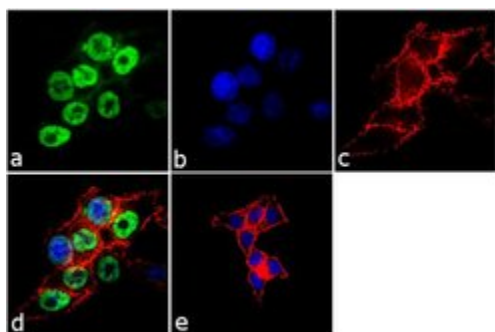
Advanced Verification Data



PTBP1 Antibody (32-4800)

Antibody specificity was demonstrated by siRNA mediated knockdown of target protein. HeLa cells were transfected with PTBP1 siRNA and loss of signal was observed in Western Blot using Anti-PTBP1 monoclonal Antibody (Product # 32-4800). Knockdown validation info.

Product Images For PTBP1 Monoclonal Antibody (1)



PTBP1 Antibody (32-4800) in ICC/IF

Immunofluorescence analysis of PTB (CLONE 1) was performed using 70% confluent log phase HCT 116 cells. The cells were fixed with 4% paraformaldehyde for 10 minutes, permeabilized with 0.1% Triton™ X-100 for 10 minutes, and blocked with 1% BSA for 1 hour at room temperature. The cells were labeled with PTBP1 /PTB (1) Mouse Monoclonal Antibody (Product # 32-4800) at 2µg/mL in 0.1% BSA and incubated for 3 hours at room temperature and then labeled with Goat anti-Mouse IgG (H+L) Superclonal™ Secondary Antibody, Alexa Fluor® 488 conjugate (Product # A28175) at a dilution of 1:2000 for 45 minutes at room temperature (Panel a: green). Nuclei (Panel b: blue) were stained with SlowFade® Gold Antifade Mountant with DAPI (Product # S36938). F-actin (Panel c: red) was stained with Alexa Fluor® 555 Rhodamine Phalloidin (Product # R415, 1:300). Panel d represents the merged image showing nuclear localization. Panel e shows the no primary antibody control. The images were captured at 60X magnification.

PTBP1 Antibody (32-4800) in ICC/IF

Immunofluorescence analysis of PTB (CLONE 1) was performed using 70% confluent log phase HCT-116 cells. The cells were fixed with 4% paraformaldehyde for 10 minutes, permeabilized with 0.1% Triton™ X-100 for 10 minutes, and blocked with 1% BSA for 1 hour at room temperature. The cells were labeled with PTBP1 / PTB Mouse Monoclonal Antibody (Product # 32-4800) at 2 µg/mL in 0.1% BSA and incubated for 3 hours at room temperature and then labeled with Goat anti-Mouse IgG (H+L) Superclonal™ Secondary Antibody, Alexa Fluor® 488 conjugate (Product # A28175) at a dilution of 1:2000 for 45 minutes at room temperature (Panel a: green). Nuclei (Panel b: blue) were stained with SlowFade® Gold Antifade Mountant with DAPI (Product # S36938). F-actin (Panel c: red) was stained with Alexa Fluor® 555 Rhodamine Phalloidin (Product # R415, 1:300). Panel d represents the merged image showing nuclear localization. Panel e shows the no primary antibody control. The images were captured at 60X magnification.

View more figures on [thermofisher.com](https://www.thermofisher.com)

Western Blot (25)

Nucleic acids research

The mTOR regulated RNA-binding protein LARP1 requires PABPC1 for guided mRNA interaction.

"32-4800 was used in Western Blotting to demonstrate that mRNAs, including those encoding proteins critical for cell growth and survival, are translationally repressed when bound by both LARP1 and PABPC1."

Authors: Smith EM, Benbahouche NEH, Morris K, Wilczynska A, Gillen S, Schmidt T, Meijer HA, Jukes-Jones R, Cain K, Jones C, Stoneley M, Waldron JA, Bell C, Fonseca BD, Blagden S, Willis AE, Bushell M

Species
Human

Dilution
Not Cited

Year
2021

The Journal of clinical investigation

Identification of human long noncoding RNAs associated with nonalcoholic fatty liver disease and metabolic homeostasis.

"32-4800 was used in Western Blot, RNA Immunoprecipitation, ChIP assay to identify hLMRs which are metabolically sensitive and applicable in treating disease."

Authors: Ruan X, Li P, Ma Y, Jiang CF, Chen Y, Shi Y, Gupta N, Seifuddin F, Pirooznia M, Ohnishi Y, Yoneda N, Nishiwaki M, Dumbovic G, Rinn JL, Higuchi Y, Kawai K, Suemizu H, Cao H

Species
Mouse

Dilution
Not Cited

Year
2021

[View more WB references on thermofisher.com](#)

Immunohistochemistry (2)

PloS one

PTBP1 is required for embryonic development before gastrulation.

"32-4800 was used in immunohistochemistry to use knock out mice to determine the role of polypyrimidine-tract binding protein 1 during development."

Authors: Suckale J, Wendling O, Masjkur J, Jäger M, Münster C, Anastassiadis K, Stewart AF, Solimena M

Species
Mouse

Dilution
Not Cited

Year
2011

Nature cell biology

Polypyrimidine tract-binding protein promotes insulin secretory granule biogenesis.

Authors: Knoch KP, Bergert H, Borgonovo B, Saeger HD, Altkrüger A, Verkade P, Solimena M

Species
Rat

Dilution
Not Cited

Year
2004

More applications with references on thermofisher.com

ICC/IF (7)

IP (6)

ChIP (2)

RIP (5)

Misc (1)

For Research Use Only. Not for use in diagnostic procedures. Not for resale without express authorization. Products are warranted to operate or perform substantially in conformance with published Product specifications in effect at the time of sale, as set forth in the Production documentation, specifications and/or accompanying package inserts ("Documentation"). No claim of suitability for use in applications regulated by FDA is made. The warranty provided herein is valid only when used by properly trained individuals. Unless otherwise stated in the Documentation, this warranty is limited to one year from date of shipment when the Product is subjected to normal, proper and intended usage. This warranty does not extend to anyone other than the Buyer. Any model or sample furnished to Buyer is merely illustrative of the general type and quality of goods and does not represent that any Product will conform to such model or sample. NO OTHER WARRANTIES, EXPRESS OR IMPLIED, ARE GRANTED INCLUDING WITHOUT LIMITATION, IMPLIED WARRANTIES OF MERCHANTABILITY, FITNESS FOR ANY PARTICULAR PURPOSE, OR NON INFRINGEMENT. BUYER'S EXCLUSIVE REMEDY FOR NON-CONFORMING PRODUCTS DURING THE WARRANTY PERIOD IS LIMITED TO REPAIR, REPLACEMENT OF OR REFUND FOR THE NON-CONFORMING PRODUCT(S) AT SELLER'S SOLE OPTION. THERE IS NO OBLIGATION TO REPAIR, REPLACE OR REFUND FOR PRODUCTS AS THE RESULT OF (I) ACCIDENT, DISASTER OR EVENT OF FORCE MAJEURE, (II) MISUSE, FAULT OR NEGLIGENCE OF OR BY BUYER, (III) USE OF THE PRODUCTS IN A MANNER FOR WHICH THEY WERE NOT DESIGNED, OR (IV) IMPROPER STORAGE AND HANDLING OF THE PRODUCTS. Unless otherwise expressly stated on the Product or in the documentation accompanying the Product, the Product is intended for research only and is not to be used for any other purpose, including without limitation, unauthorized commercial uses, in vitro diagnostic uses, ex vivo or in vivo therapeutic uses, or any type of consumption by or application to human or animals.