



Website: www.cwbiosciences.com
Technical Support: service@cwbiosciences.com
Customer Service: 617-800-6495



100 bp DNA Ladder

Catalog Number: CW0636S (100 preps)

CW0636M (500 preps)

Storage Condition: Store at 4°C for 6 months; Store at -20°C for more than 2 years and avoid repeated freezing and thawing.

Kit Components:

Component	CW0636S (100 preps)	CW0636M (500 preps)
100 bp DNA Ladder	500 µl	5x500 µl

Product Introduction:

The 100 bp DNA Ladder consists of 9 DNA fragments, which are 1,500 bp, 1,000 bp, 800 bp, 600 bp, 500 bp, 400 bp, 200 bp and 100 bp, respectively. This product already contains 1× Loading Buffer and 5 µl marker can be directly loaded for electrophoresis gel. It is very convenient to use. The 500 bp DNA fragment is about 150 ng, which is the brightest band. The amount of DNA for other bands is about 50 ng.

Precautions:

1. This product can be directly used after thawing and mixing; No need of heating.
2. Please change the electrophoresis running buffer in time and use an agarose gel newly made, to avoid affecting the electrophoresis results.
3. For DNA agarose gel electrophoresis, the purity of the gel has a great influence on the clarity of the DNA bands. Try to use good quality agarose. The recommended gel concentration is between 1%-3%, and the voltage is between 4-8 v/cm.
4. Gel concentration is closely related to the separation of DNA fragments. The higher the gel concentration, the better the separation of short DNA fragments; conversely, the lower the

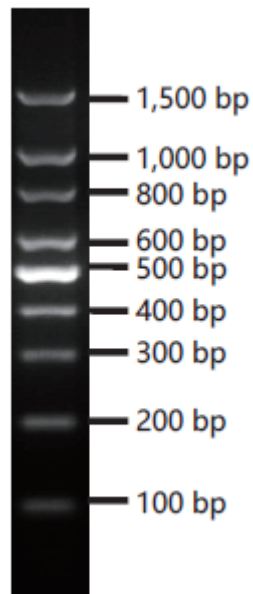
gel concentration, the better the separation of long DNA fragments.

5. When used with macromolecular dyes, it is recommended to reduce the amount of the marker or increase the amount of dyes.

Protocol:

Load 5 μ l of 100 bp DNA Ladder into the agarose gel well (if the width of wells is larger than 6 mm, increase the loading sample volume), then run electrophoresis gel.

Experiment result:



5 μ l of 100 bp DNA ladder loaded on 1% agarose gel