

CD56 (NCAM) Monoclonal Antibody (TULY56), PE, eBioscience™

Product Details	
Size	100 Tests
Species Reactivity	Human, Non-human primate, Rhesus monkey
Published Species	Human
Host/Isotype	Mouse / IgG1, kappa
Recommended Isotype Control	Mouse IgG1 kappa Isotype Control (P3.6.2.8.1), PE, eBioscience™
Class	Monoclonal
Type	Antibody
Clone	TULY56
Conjugate	PE
Form	Liquid
Concentration	5 µL/Test
Purification	Affinity chromatography
Storage buffer	PBS, pH 7.2, with 0.1% gelatin, 0.2% BSA
Contains	0.09% sodium azide
Storage conditions	4° C, store in dark, DO NOT FREEZE!
RRID	AB_2572563

Applications	Tested Dilution	Publications
Flow Cytometry (Flow)	5 µL (0.06 µg)/test	5 Publications

Product Specific Information

Description: This TULY56 monoclonal antibody reacts with human CD56, also known as Neural Cell Adhesion Molecule (NCAM). CD56 is a highly glycosylated transmembrane molecule expressed by neurons and plays a role in the homotypic adhesion of neural cells. In the hematopoietic system, CD56 is expressed on NK cells and a subset of T cells referred to as NKT cells.

Staining with TULY56 does not block binding of CMSSB, suggesting that the two antibodies recognize different epitopes. Additionally, TULY56 performs better after fixation and permeabilization than CMSSB.

The TULY56 monoclonal antibody crossreacts with Rhesus macaque.

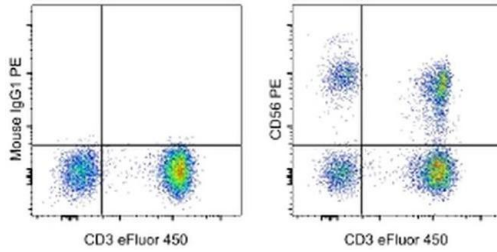
Applications Reported: This TULY56 antibody has been reported for use in flow cytometric analysis.

Applications Tested: This TULY56 antibody has been pre-titrated and tested by flow cytometric analysis of normal human peripheral blood cells. This can be used at 5 µL (0.06 µg) per test. A test is defined as the amount (µg) of antibody that will stain a cell sample in a final volume of 100 µL. Cell number should be determined empirically but can range from 10⁵ to 10⁸ cells/test.

Excitation: 488-561 nm; Emission: 578 nm; Laser: Blue Laser, Green Laser, Yellow-Green Laser.

Filtration: 0.2 µm post-manufacturing filtered.

Product Images For CD56 (NCAM) Monoclonal Antibody (TULY56), PE, eBioscience™



CD56 (NCAM) Antibody (12-0566-42) in Flow

Staining of normal human peripheral blood cells with Anti-Human CD3 eFluor® 450 (Product # 48-0038-80) and Mouse IgG1 K Isotype Control PE (Product # 12-4714-81) (left) or Anti-Human CD56 (NCAM) PE (right). Cells in the lymphocyte gate were used for analysis.

[View more figures on thermofisher.com](#)

5 References

Flow Cytometry (5)

Oncoimmunology

Development of CAR-T cell therapy for B-ALL using a point-of-care approach.

"12-0566 was used in Flow cytometry/Cell sorting to demonstrate that the POC approach is a viable alternative for the generation and use of CAR-T cells, overcoming the limitations of current manufacturing protocols."

Authors: de Macedo Abdo L,Barros LRC,Saldanha Viegas M,Vieira Codeço Marques L,de Sousa Ferreira P,Chicaybam L,Bonamino MH

Species
Human

Dilution
Not Cited

Year
2021

Journal of Cancer

HDAC Inhibitor, CG-745, Enhances the Anti-Cancer Effect of Anti-PD-1 Immune Checkpoint Inhibitor by Modulation of the Immune Microenvironment.

"Published figure using CD56 (NCAM) monoclonal antibody (Product # 12-0566-42) in Flow Cytometry"

Authors: Kim YD,Park SM,Ha HC,Lee AR,Won H,Cha H,Cho S,Cho JM

Species
Not Applicable

Dilution
Not Cited

Year
2020

[View more Flow references on thermofisher.com](#)

More applications with references on thermofisher.com

For Research Use Only. Not for use in diagnostic procedures. Not for resale without express authorization. Products are warranted to operate or perform substantially in conformance with published Product specifications in effect at the time of sale, as set forth in the Production documentation, specifications and/or accompanying package inserts ("Documentation"). No claim of suitability for use in applications regulated by FDA is made. The warranty provided herein is valid only when used by properly trained individuals. Unless otherwise stated in the Documentation, this warranty is limited to one year from date of shipment when the Product is subjected to normal, proper and intended usage. This warranty does not extend to anyone other than the Buyer. Any model or sample furnished to Buyer is merely illustrative of the general type and quality of goods and does not represent that any Product will conform to such model or sample. NO OTHER WARRANTIES, EXPRESS OR IMPLIED, ARE GRANTED INCLUDING WITHOUT LIMITATION, IMPLIED WARRANTIES OF MERCHANTABILITY, FITNESS FOR ANY PARTICULAR PURPOSE, OR NON INFRINGEMENT. BUYER'S EXCLUSIVE REMEDY FOR NON-CONFORMING PRODUCTS DURING THE WARRANTY PERIOD IS LIMITED TO REPAIR, REPLACEMENT OF OR REFUND FOR THE NON-CONFORMING PRODUCT(S) AT SELLER'S SOLE OPTION. THERE IS NO OBLIGATION TO REPAIR, REPLACE OR REFUND FOR PRODUCTS AS THE RESULT OF (I) ACCIDENT, DISASTER OR EVENT OF FORCE MAJEURE, (II) MISUSE, FAULT OR NEGLIGENCE OF OR BY BUYER, (III) USE OF THE PRODUCTS IN A MANNER FOR WHICH THEY WERE NOT DESIGNED, OR (IV) IMPROPER STORAGE AND HANDLING OF THE PRODUCTS. Unless otherwise expressly stated on the Product or in the documentation accompanying the Product, the Product is intended for research only and is not to be used for any other purpose, including without limitation, unauthorized commercial uses, in vitro diagnostic uses, ex vivo or in vivo therapeutic uses, or any type of consumption by or application to human or animals.