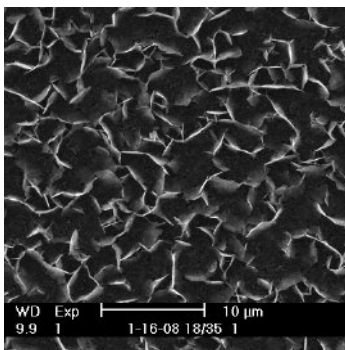


Corning® Osteo Assay Surface

For Osteogenesis Research

CORNING



Scanning Electron Micrograph of Corning Osteo Assay Surface

Corning Osteo Assay Surface is a unique 3-dimensional structure that mimics *in vivo* bone for *in vitro* bone cell assays. This inorganic bone biomaterial surface in a multiple well plate is capable of supporting the functional properties of osteogenic cells. The assay surface is manufactured using a proprietary surface coating technology, which delivers lot-to-lot consistency, translating to consistent and reproducible results in bone cell assays. This surface also offers a consistent and defined alternative to preparing dentine or bone slices, reducing the variability in your assay system and resulting in more predictable assay readouts.

The Corning Osteo Assay Surface is designed for:

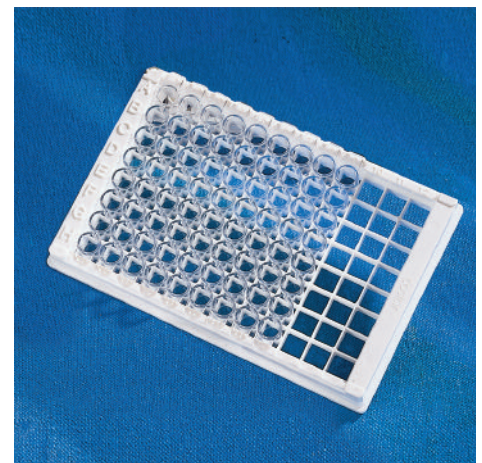
- ▶ Direct assessment of osteoclast and osteoblast functional *in vitro* activity
- ▶ Osteoclast and osteoblast precursor differentiation
- ▶ Co-culture of osteoclast and/or osteoblasts with other cell lines
- ▶ Solution-based quantitative assays
- ▶ Studies related to bone remodeling and pit formation



Corning 24 Well Osteo Assay Surface Plate



Corning 96 Well Osteo Assay Surface Plate



Corning polystyrene 1 x 8 Stripwell™ Osteo Assay Surface Microplate

Corning® Osteo Assay Surface Ordering Information

Cat. No.	Description	Qty/Pk	Qty/Cs
3988	Osteo assay surface polystyrene 96 well plate, sterile, with bar code and proprietary coating	1	4
3987	Osteo assay surface polystyrene 24 well plate, sterile, with proprietary coating	1	4
3989	Osteo Assay Surface polystyrene 1 x 8 Stripwell™ microplates, 12 strips per holder with lid, sterile, with proprietary coating	1	2

For additional product or technical information, and a complete listing of our International Offices and Distributors, please visit www.corning.com/lifesciences or call 800.492.1110. Outside the United States, please call +1.978.442.2200 or contact your local Corning sales office listed below.

CORNING

Corning Incorporated Life Sciences

Tower 2, 4th Floor
900 Chelmsford St.
Lowell, MA 01851
t 800.492.1110
t 978.442.2200
f 978.442.2476

www.corning.com/lifesciences

Worldwide Support Offices

ASIA / PACIFIC

Australia/New Zealand
t 0402-794-347

China
t 86 21 2215 2888
f 86 21 6215 2988

India
t 91 124 4604000
f 91 124 4604099

Japan

t 81 3-3586 1996
f 81 3-3586 1291

Korea

t 82 2-796-9500
f 82 2-796-9300

Singapore

t 65 6733-6511
f 65 6861-2913

Taiwan

t 886 2-2716-0338
f 886 2-2516-7500

EUROPE

France

t 0800 916 882
f 0800 918 636

Germany

t 0800 101 1153
f 0800 101 2427

The Netherlands

t 31 20 655 79 28
f 31 20 659 76 73

United Kingdom

t 0800 376 8660
f 0800 279 1117

All Other European Countries

t 31 (0) 20 659 60 51
f 31 (0) 20 659 76 73

LATIN AMERICA

Brasil

t (55-11) 3089-7419
f (55-11) 3167-0700

Mexico

t (52-81) 8158-8400
f (52-81) 8313-8589