

Human sCD26 ELISA Kit

Enzyme-linked Immunosorbent Assay for quantitative detection of human CD26

Catalog Numbers BMS235 or BMS235TEN

Pub. No. MAN0016609 **Rev.** A.0 (30)

WARNING! Read the Safety Data Sheets (SDSs) and follow the handling instructions. Wear appropriate protective eyewear, clothing, and gloves. Safety Data Sheets (SDSs) are available from thermofisher.com/support.

Product description

The Human sCD26 ELISA Kit is an enzyme-linked immunosorbent assay for the quantitative detection of human CD26.

Summary

CD26, a T cell activation antigen, is a 110 kDa cell surface glycoprotein with known dipeptidyl peptidase IV (DPPIV; EC 3.4.14.5) activity in its extracellular domain which is present on various cell types, including T cells and epithelial cells of the liver, kidney, and intestine. Of the T cell antigens described to date, CD26 has proved to be one of the most intriguing in the scope of its functional associations. Considerable evidence suggests that CD26 can deliver a potent costimulatory signal to T-cells. This signal transducing property appears to be a property of its extracellular domain. In addition, CD26 appears to be a functional collagen receptor that may aid activated T-cells in localizing to inflammatory regions. It has also been demonstrated that CD26 not only acts as a functional dipeptidyl peptidase IV, but also binds strongly to adenosine deaminase.

Significant levels of DPPIV activity have been shown to exist in plasma, serum, and urine. The serum form of DPPIV is unique, and is not a breakdown product of membrane CD26, nevertheless exposing significant structural similarity to the membrane form.

For literature update refer to our website.

Principles of the test

An anti-human CD26 coating antibody is adsorbed onto microwells.

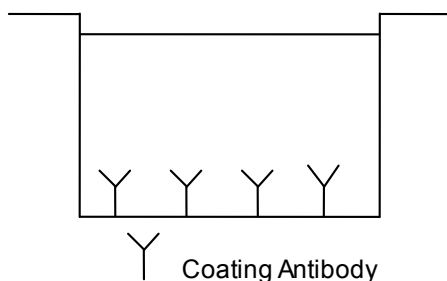


Fig. 1 Coated microwell

Human CD26 present in the sample or standard binds to antibodies adsorbed to the microwells. A biotin-conjugated anti-human CD26 antibody is added and binds to human CD26 captured by the first antibody.

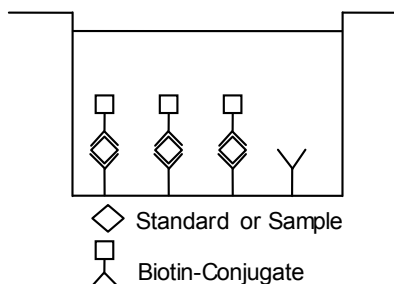


Fig. 2 First incubation

Following incubation unbound biotin-conjugated anti-human CD26 antibody is removed during a wash step. Streptavidin-HRP is added and binds to the biotin-conjugated anti-human CD26 antibody.

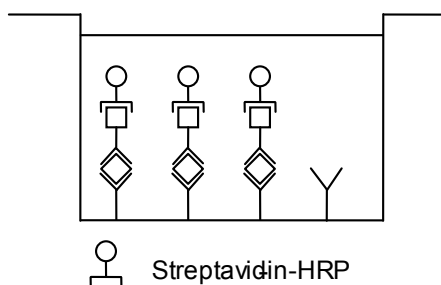


Fig. 3 Second incubation

Following incubation unbound Streptavidin-HRP is removed during a wash step, and substrate solution reactive with HRP is added to the wells.

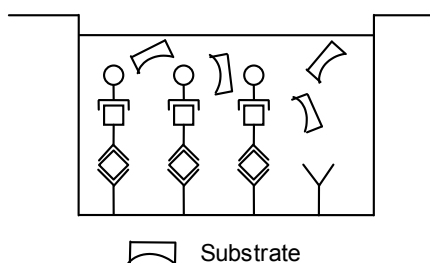


Fig. 4 Third incubation

A colored product is formed in proportion to the amount of human CD26 present in the sample or standard. The reaction is terminated by addition of acid and absorbance is measured at 450 nm. A standard curve is prepared from 6 human CD26 standard dilutions and human CD26 sample concentration determined.

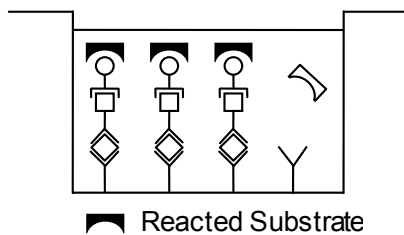


Fig. 5 Stop reaction

Reagents provided

Reagents for human CD26 ELISA BMS235 (96 tests)

1 aluminum pouch with a Microwell Plate (12 strips with 8 wells each) coated with monoclonal antibody to human CD26

1 vial (70 μ L) Biotin-Conjugate anti-human CD26 monoclonal antibody

1 vial (150 μ L) Streptavidin-HRP

2 vials human CD26 Standard, 500 ng/mL upon dilution

1 vial (12 mL) Sample Diluent

1 vial (5 mL) Assay Buffer Concentrate 20x (PBS with 1% Tween 20, 10% BSA)

1 bottle (50 mL) Wash Buffer Concentrate 20x (PBS with 1% Tween 20)

1 vial (15 mL) Substrate Solution (tetramethyl-benzidine)

1 vial (15 mL) Stop Solution (1M Phosphoric acid)

4 Adhesive Films

Reagents for human CD26 ELISA BMS235TEN (10x96 tests)

10 aluminum pouches with a Microwell Plate (12 strips with 8 wells each) coated with monoclonal antibody to human CD26

10 vials (70 μ L) Biotin-Conjugate anti-human CD26 monoclonal antibody

10 vials (150 μ L) Streptavidin-HRP

10 vials human CD26 Standard, 500 ng/mL upon dilution

8 vials (12 mL) Sample Diluent

2 vials (5 mL) Assay Buffer Concentrate 20x (PBS with 1% Tween 20, 10% BSA)

5 bottles (50 mL) Wash Buffer Concentrate 20x (PBS with 1% Tween 20)

10 vials (15 mL) Substrate Solution (tetramethyl-benzidine)

1 vial (100 mL) Stop Solution (1M Phosphoric acid)

20 Adhesive Films

Storage instructions – ELISA kit

Store kit reagents between 2° and 8°C. Immediately after use remaining reagents should be returned to cold storage (2° to 8°C). Expiry of the kit and reagents is stated on labels.

Expiry of the kit components can only be guaranteed if the components are stored properly, and if, in case of repeated use of one component, this reagent is not contaminated by the first handling.

Sample collection and storage instructions

Cell culture supernatant and serum were tested with this assay. Other biological samples might be suitable for use in the assay. Remove serum from the clot as soon as possible after clotting. Pay attention to a possible “Hook Effect” due to high sample concentrations (see “Calculation of results” on page 4). Samples containing a visible precipitate must be clarified prior to use in the assay. Do not use grossly hemolyzed or lipemic samples.

Samples should be aliquoted and must be stored frozen at –20°C to avoid loss of bioactive human CD26. If samples are to be run within 24 hours, they may be stored at 2–8°C (refer to “Sample stability” on page 6). Avoid repeated freeze-thaw cycles. Prior to assay, the frozen sample should be brought to room temperature slowly and mixed gently.

Materials required but not provided

- 5 mL and 10 mL graduated pipettes
- 5 μ L to 1000 μ L adjustable single channel micropipettes with disposable tips
- 50 μ L to 300 μ L adjustable multichannel micropipette with disposable tips
- Multichannel micropipette reservoir
- Beakers, flasks, cylinders necessary for preparation of reagents
- Device for delivery of wash solution (multichannel wash bottle or automatic wash system)
- Microwell strip reader capable of reading at 450 nm (620 nm as optional reference wave length)
- Glass-distilled or deionized water
- Statistical calculator with program to perform regression analysis

Precautions for use

- All chemicals should be considered as potentially hazardous. We therefore recommend that this product is handled only by those persons who have been trained in laboratory techniques and that it is used in accordance with the principles of good laboratory practice. Wear suitable protective clothing such as laboratory overalls, safety glasses, and gloves. Care should be taken to avoid contact with skin or eyes. In the case of contact with skin or eyes wash immediately with water. See material safety data sheet(s) and/or safety statement(s) for specific advice.
- Reagents are intended for research use only and are not for use in diagnostic or therapeutic procedures.
- Do not mix or substitute reagents with those from other lots or other sources.
- Do not use kit reagents beyond expiration date on label.
- Do not expose kit reagents to strong light during storage or incubation.
- Do not pipet by mouth.
- Do not eat or smoke in areas where kit reagents or samples are handled.
- Avoid contact of skin or mucous membranes with kit reagents or samples.
- Rubber or disposable latex gloves should be worn while handling kit reagents or samples.
- Avoid contact of substrate solution with oxidizing agents and metal.
- Avoid splashing or generation of aerosols.
- To avoid microbial contamination or cross-contamination of reagents or samples that may invalidate the test, use disposable pipette tips and/or pipettes.
- Use clean, dedicated reagent trays for dispensing the conjugate and substrate reagent.
- Exposure to acid inactivates the conjugate.
- Glass-distilled water or deionized water must be used for reagent preparation.
- Substrate solution must be at room temperature prior to use.
- Decontaminate and dispose samples and all potentially contaminated materials as if they could contain infectious agents. The preferred method of decontamination is autoclaving for a minimum of 1 hour at 121.5°C.
- Liquid wastes not containing acid and neutralized waste may be mixed with sodium hypochlorite in volumes such that the final mixture contains 1.0% sodium hypochlorite. Allow 30 minutes for effective decontamination. Liquid waste containing acid must be neutralized prior to the addition of sodium hypochlorite.

Preparation of reagents

Buffer Concentrates should be brought to room temperature and should be diluted before starting the test procedure. If crystals have formed in the Buffer Concentrates, warm them gently until they have completely dissolved.

Wash buffer (1x)

1. Pour entire contents (50 mL) of the Wash Buffer Concentrate (20x) into a clean 1000 mL graduated cylinder. Bring to final volume of 1000 mL with glass-distilled or deionized water.
2. Mix gently to avoid foaming.
3. Transfer to a clean wash bottle and store at 2° to 25°C. Please note that Wash Buffer (1x) is stable for 30 days.
4. Wash Buffer (1x) may also be prepared as needed according to the following table:

Number of Strips	Wash Buffer Concentrate (20x) (mL)	Distilled Water (mL)
1 - 6	25	475
1 - 12	50	950

Assay buffer (1x)

1. Pour the entire contents (5 mL) of the Assay Buffer Concentrate (20x) into a clean 100 mL graduated cylinder. Bring to final volume of 100 mL with distilled water. Mix gently to avoid foaming.
2. Store at 2° to 8°C. Please note that the Assay Buffer (1x) is stable for 30 days.
3. Assay Buffer (1x) may also be prepared as needed according to the following table:

Number of Strips	Assay Buffer Concentrate (20x) (mL)	Distilled Water (mL)
1 - 6	2.5	47.5
1 - 12	5.0	95.0

Biotin-Conjugate

Note: The Biotin-Conjugate should be used within 30 minutes after dilution.

Make a 1:100 dilution of the concentrated Biotin-Conjugate solution with Assay Buffer (1x) in a clean plastic tube as needed according to the following table:

Number of Strips	Biotin-Conjugate (mL)	Assay Buffer (1x) (mL)
1 - 6	0.03	2.97
1 - 12	0.06	5.94

Streptavidin-HRP

Note: The Streptavidin-HRP should be used within 30 minutes after dilution.

Make a 1:200 dilution of the concentrated Streptavidin-HRP solution with Assay Buffer (1x) in a clean plastic tube as needed according to the following table:

Number of Strips	Streptavidin-HRP (mL)	Assay Buffer (1x) (mL)
1 - 6	0.03	5.97
1 - 12	0.06	11.94

Human CD26 standard

1. Prepare human CD26 standard by addition of Assay Buffer (1x) as stated on the label and mix gently (concentration of standard = 500 ng/mL). It is recommended to centrifuge vials for a few seconds in a microcentrifuge before opening to collect standard at the bottom.
2. After usage remaining standard cannot be stored and has to be discarded.
3. Standard dilutions can be prepared directly on the microwell plate ("Test protocol" on page 3) or alternatively in tubes (see "External standard dilution" on page 3).

External standard dilution

1. Label 5 tubes, one for each standard point: S2, S3, S4, S5, S6.
2. Then prepare 1:2 serial dilutions for the standard curve as follows: Pipette 225 µL of Sample Diluent into tubes S2 – S6.
3. Pipette 225 µL of diluted standard (serves as the highest standard S1, concentration of standard 1 = 500 ng/mL) into the first tube, labeled S2, and mix (concentration of standard 2 = 250 ng/mL).
4. Pipette 225 µL of this dilution into the second tube, labeled S3, and mix thoroughly before the next transfer.
5. Repeat serial dilutions 3 more times thus creating the points of the standard curve (see Figure 6).

Sample Diluent serves as blank.

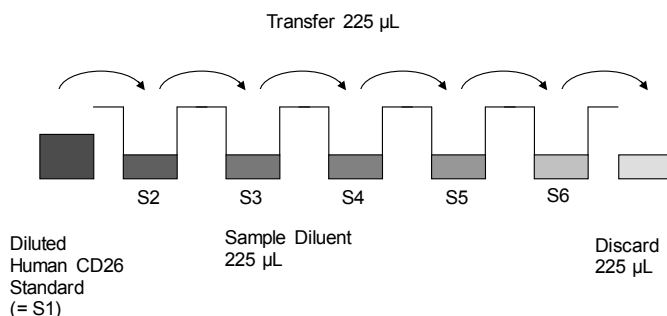


Fig. 6 Dilute standards - tubes

Test protocol

1. Determine the number of microwell strips required to test the desired number of samples plus appropriate number of wells needed for running samples and standards. Each sample, standard, blank and optional control sample should be assayed in duplicate. Remove extra microwell strips from holder and store in foil bag with the desiccant provided at 2°-8°C sealed tightly.
2. Wash the microwell strips twice with approximately 400 µL Wash Buffer per well with thorough aspiration of microwell contents between washes. Allow the Wash Buffer to sit in the wells for about 10 – 15 seconds before aspiration. Take care not to scratch the surface of the microwells.
3. Standard dilution on the microwell plate (Alternatively the standard dilution can be prepared in tubes - see "External standard dilution" on page 3):

After the last wash step, empty wells and tap microwell strips on absorbent pad or paper towel to remove excess Wash Buffer. Use the microwell strips immediately after washing. Alternatively microwell strips can be placed upside down on a wet absorbent paper for not longer than 15 minutes. Do not allow wells to dry.

Add 100 µL of Sample Diluent in duplicate to standard wells B1/2 - F1/2, leaving A1/A2 empty. Pipette 200 µL of prepared standard (see "Human CD26 standard" on page 3, concentration = 500.0 ng/mL) in duplicate into well A1 and A2 (see Table 1). Transfer 100 µL to wells B1 and B2. Mix the contents of wells B1 and B2 by repeated aspiration and ejection, and transfer 100 µL to wells C1 and C2, respectively. (see Figure 7). Take care not to scratch the inner surface of the microwells. Continue this procedure 3 times, creating two rows of human CD26 standard dilutions ranging from 500.0 to 15.6 ng/mL. Discard 100 µL of the contents from the last microwells (F1, F2) used.

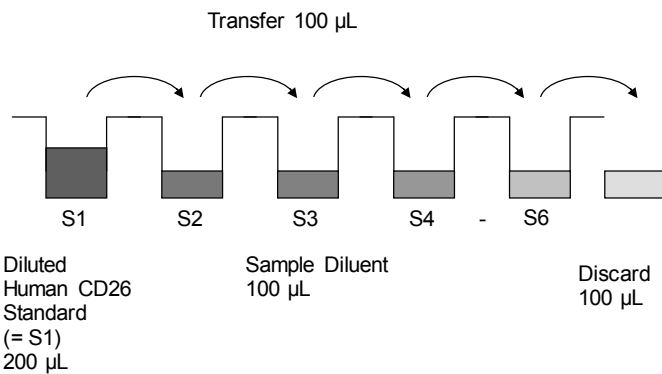


Fig. 7 Dilute standards - microwell plate

Table 1 Example of the arrangement of blanks, standards and samples in the microwell strips.

	1	2	3	4
A	Standard 1 500.0 ng/mL	Standard 1 500.0 ng/mL	Sample 2	Sample 2
B	Standard 2 250.0 ng/mL	Standard 2 250.0 ng/mL	Sample 3	Sample 3
C	Standard 3 125.0 ng/mL	Standard 3 125.0 ng/mL	Sample 4	Sample 4
D	Standard 4 62.5 ng/mL	Standard 4 62.5 ng/mL	Sample 5	Sample 5
E	Standard 5 31.3 ng/mL	Standard 5 31.3 ng/mL	Sample 6	Sample 6
F	Standard 6 15.6 ng/mL	Standard 6 15.6 ng/mL	Sample 7	Sample 7
G	Blank	Blank	Sample 8	Sample 8
H	Sample 1	Sample 1	Sample 9	Sample 9

In case of an external standard dilution (see “External standard dilution” on page 3), pipette 100 µL of these standard dilutions (S1 - S6) in the standard wells according to Table 1.

4. Add 100 µL of Sample Diluent in duplicate to the blank wells.
5. Add 80 µL of Sample Diluent to the sample wells.
6. Add 20 µL of each sample in duplicate to the sample wells.
7. Prepare Biotin-Conjugate (see “Biotin-Conjugate” on page 3).
8. Add 50 µL of Biotin-Conjugate to all wells.
9. Cover with an adhesive film and incubate at room temperature (18 to 25°C) for 3 hours, if available on a microplate shaker.
10. Prepare Streptavidin-HRP (refer to “Streptavidin-HRP” on page 3).
11. Remove adhesive film and empty wells. Wash microwell strips 4 times according to point 2. of the test protocol. Proceed immediately to the next step.
12. Add 100 µL of diluted Streptavidin-HRP to all wells, including the blank wells.
13. Cover with an adhesive film and incubate at room temperature (18° to 25°C) for 1 hour, if available on a microplate shaker.
14. Remove adhesive film and empty wells. Wash microwell strips 4 times according to point 2. of the test protocol. Proceed immediately to the next step.
15. Pipette 100 µL of TMB Substrate Solution to all wells.
16. Incubate the microwell strips at room temperature (18° to 25°C) for about 10 minutes. Avoid direct exposure to intense light.

The color development on the plate should be monitored and the substrate reaction stopped (see next point of this protocol) before positive wells are no longer properly recordable. Determination of the ideal time period for color development has to be done individually for each assay.

It is recommended to add the stop solution when the highest standard has developed a dark blue color. Alternatively the color development can be monitored by the ELISA reader at 620 nm. The substrate reaction should be stopped as soon as Standard 1 has reached an OD of 0.9 – 0.95.

17. Stop the enzyme reaction by quickly pipetting 100 µL of Stop Solution into each well. It is important that the Stop Solution is spread quickly and uniformly throughout the microwells to completely inactivate the enzyme. Results must be read immediately after the Stop Solution is added or within one hour if the microwell strips are stored at 2 - 8°C in the dark.
18. Read absorbance of each microwell on a spectro-photometer using 450 nm as the primary wave length (optionally 620 nm as the reference wave length; 610 nm to 650 nm is acceptable). Blank the plate reader according to the manufacturer's instructions by using the blank wells. Determine the absorbance of both the samples and the standards.

Note: In case of incubation without shaking the obtained O.D. values may be lower than indicated below. Nevertheless the results are still valid.

Calculation of results

- Calculate the average absorbance values for each set of duplicate standards and samples. Duplicates should be within 20 percent of the mean value.
- Create a standard curve by plotting the mean absorbance for each standard concentration on the ordinate against the human CD26 concentration on the abscissa. Draw a best fit curve through the points of the graph (a 5-parameter curve fit is recommended).
- To determine the concentration of circulating human CD26 for each sample, first find the mean absorbance value on the ordinate and extend a horizontal line to the standard curve. At the point of intersection, extend a vertical line to the abscissa and read the corresponding human CD26 concentration.
- If instructions in this protocol have been followed, samples have been diluted 1:5 (20 µL sample + 80 µL Sample Diluent) and the concentration read from the standard curve must be multiplied by the dilution factor (x 5).
- Calculation of samples with a concentration exceeding standard 1 will result in incorrect, low human CD26 levels (Hook Effect). Such samples require further external predilution according to expected human CD26 values with Sample in order to precisely quantitate the actual human CD26 level.
- It is suggested that each testing facility establishes a control sample of known human CD26 concentration and runs this additional control with each assay. If the values obtained are not within the expected range of the control, the assay results may be invalid.

- A representative standard curve is shown in Figure 8. This curve cannot be used to derive test results. Each laboratory must prepare a standard curve for each group of microwell strips assayed.

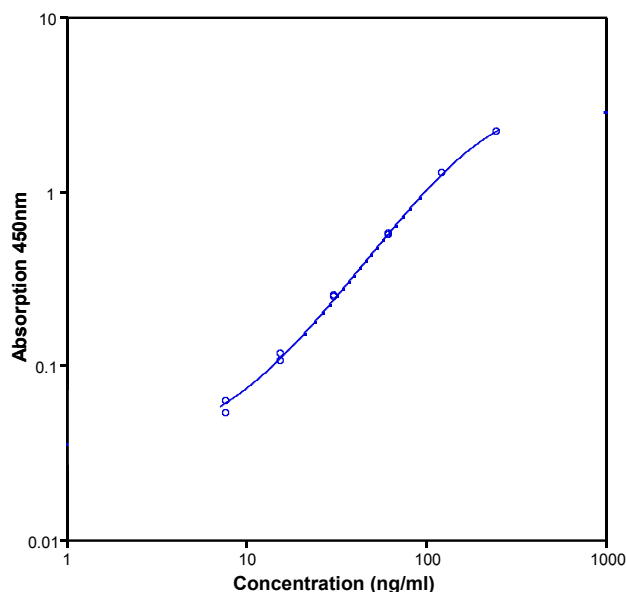


Fig. 8 Representative standard curve for human CD26 ELISA. Human CD26 was diluted in serial 2-fold steps in Sample Diluent. Do not use this standard curve to derive test results. A standard curve must be run for each group of microwell strips assayed.

Table 2 Typical data using the human CD26 ELISA

Measuring wavelength: 450 nm

Reference wavelength: 620 nm

Standard	Human CD26 Concentration (ng/mL)	O.D. at 450 nm	Mean O.D. at 450 nm	C.V. (%)
1	500.0	2.198 2.194	2.197	0.1
2	250.0	1.259 1.264	1.262	0.3
3	125.0	0.567 0.562	0.565	0.6
4	62.5	0.246 0.249	0.248	0.9
5	31.3	0.105 0.116	0.111	7.0
6	15.6	0.053 0.062	0.058	11.1
Blank	0.0	0.022 0.017	0.020	12.8

The OD values of the standard curve may vary according to the conditions of assay performance (e.g., operator, pipetting technique, washing technique or temperature effects). Furthermore shelf life of the kit may affect enzymatic activity and thus color intensity. Values measured are still valid.

Limitations

- Since exact conditions may vary from assay to assay, a standard curve must be established for every run.
- Bacterial or fungal contamination of either screen samples or reagents or cross-contamination between reagents may cause erroneous results.
- Disposable pipette tips, flasks or glassware are preferred, reusable glassware must be washed and thoroughly rinsed of all detergents before use.

- Improper or insufficient washing at any stage of the procedure will result in either false positive or false negative results. Empty wells completely before dispensing fresh wash solution, fill with Wash Buffer as indicated for each wash cycle and do not allow wells to sit uncovered or dry for extended periods.
- The use of radioimmunotherapy has significantly increased the number of patients with human anti-mouse IgG antibodies (HAMA). HAMA may interfere with assays utilizing murine monoclonal antibodies leading to both false positive and false negative results. Serum samples containing antibodies to murine immunoglobulins can still be analyzed in such assays when murine immunoglobulins (serum, ascitic fluid, or monoclonal antibodies of irrelevant specificity) are added to the sample.

Performance characteristics

Sensitivity

The limit of detection of human CD26 defined as the analyte concentration resulting in an absorbance significantly higher than that of the dilution medium (mean plus 2 standard deviations) was determined to be 7.3 ng/mL (mean of 6 independent assays).

Reproducibility

Intra-assay

Reproducibility within the assay was evaluated in 3 independent experiments. Each assay was carried out with 6 replicates of 8 serum samples containing different concentrations of human CD26. 2 standard curves were run on each plate. Data below show the mean human CD26 concentration and the coefficient of variation for each sample (see Table 3). The calculated overall intra-assay coefficient of variation was 4.6%.

Table 3 The mean human CD26 concentration and the coefficient of variation for each sample

Sample	Experiment	Mean Human CD26 Concentration (ng/mL)	Coefficient of Variation (%)
1	1	371.7	6.7
	2	487.2	1.1
	3	469.1	2.9
2	1	561.4	4.5
	2	623.6	1.0
	3	606.4	5.0
3	1	325.0	11.5
	2	380.5	2.1
	3	381.7	6.0
4	1	282.9	5.7
	2	369.3	0.8
	3	369.8	1.1
5	1	497.3	4.5
	2	465.5	3.5
	3	483.2	1.6
6	1	219.4	5.9
	2	239.3	13.7
	3	251.9	11.5
7	1	398.2	4.8
	2	435.5	3.7
	3	435.9	3.6
8	1	591.8	1.8
	2	455.9	2.0
	3	483.6	4.7

Inter-assay

Assay to assay reproducibility within one laboratory was evaluated in 3 independent experiments. Each assay was carried out with 6 replicates of 8 serum samples containing different concentrations of human CD26. 2 standard curves were run on each plate. Data below show the mean human CD26 concentration and the coefficient of

variation calculated on 18 determinations of each sample (see Table 4). The calculated overall inter-assay coefficient of variation was 9.1%.

Table 4 The mean human CD26 concentration and the coefficient of variation of each sample

Sample	Mean Human CD26 Concentration (ng/mL)	Coefficient of Variation (%)
1	442.7	14.0
2	597.1	5.4
3	362.4	8.9
4	340.7	14.7
5	482.0	3.3
6	236.9	6.9
7	423.2	5.1
8	510.4	14.1

Spike recovery

The spike recovery was evaluated by spiking 4 levels of human CD26 into serum samples. Recoveries were determined in 3 independent experiments with 6 replicates each. The amount of endogenous human CD26 in unspiked serum was subtracted from the spike values. The recovery ranged from 81–116% with an overall mean recovery of 101%.

Dilution parallelism

Four serum samples with different levels of human CD26 were analyzed at serial 2-fold dilutions with 4 replicates each. The recovery ranged from 83–104% with an overall recovery of 95%.

Sample	Dilution	Human CD26 (ng/mL)		Recovery of expected concentration (%)
		Expected concentration	Observed concentration	
1	1:5	–	481.3	–
	1:10	240.6	225.6	94
	1:20	120.3	117.7	98
2	1:5	–	584.1	–
	1:10	292.0	304.5	104
	1:20	146.0	130.9	90
3	1:5	–	492.8	–
	1:10	246.4	205.2	83
	1:20	123.2	125.3	102
4	1:5	–	368.8	–
	1:10	184.4	160.3	87
	1:20	92.2	92.1	100

Sample stability

Freeze-Thaw stability

Aliquots of serum samples (spiked or unspiked) were stored at -20°C and thawed 5 times, and the human CD26 levels determined. There was no significant loss of human CD26 immunoreactivity detected by freezing and thawing.

Storage stability

Aliquots of serum samples (spiked or unspiked) were stored at -20°C, 2–8°C, room temperature, and at 37°C, and the human CD26 level determined after 24 hours. There was no significant loss of human CD26 immunoreactivity detected during storage under above conditions.

Specificity

The interference of circulating factors of the immune system was evaluated by spiking these proteins at physiologically relevant concentrations into a human CD26 positive serum. No cross-reactivity was detected.

Expected values

A panel of 38 sera samples from randomly selected apparently healthy donors (males and females) was tested for human CD26. The detected human CD26 levels ranged between 296 and 1110 ng/mL with a mean level of 591 ng/mL and a standard deviation of 179 ng/mL.

Reagent preparation summary

Wash buffer (1x)

Add Wash Buffer Concentrate 20x (50 mL) to 950 mL distilled water.

Number of Strips	Wash Buffer Concentrate (mL)	Distilled Water (mL)
1 - 6	25	475
1 - 12	50	950

Assay buffer (1x)

Add Assay Buffer Concentrate 20x (5 mL) to 95 mL distilled water.

Number of Strips	Assay Buffer Concentrate (mL)	Distilled Water (mL)
1 - 6	2.5	47.5
1 - 12	5.0	95.0

Biotin-Conjugate

Make a 1:100 dilution of Biotin-Conjugate in Assay Buffer (1x):

Number of Strips	Biotin-Conjugate (mL)	Assay Buffer (1x) (mL)
1 - 6	0.03	2.97
1 - 12	0.06	5.94

Streptavidin-HRP

Make a 1:200 dilution of Streptavidin-HRP in Assay Buffer (1x):

Number of Strips	Streptavidin-HRP (mL)	Assay Buffer (1x) (mL)
1 - 6	0.03	5.97
1 - 12	0.06	11.94

Human CD26 standard

The concentrated human CD26 standard must be diluted with Assay Buffer (1x) as stated on the label.

Test protocol summary

- Determine the number of microwell strips required.
- Wash microwell strips twice with Wash Buffer.
- Standard dilution on the microwell plate: Add 100 µL Sample Diluent, in duplicate, to all standard wells leaving the first wells empty. Pipette 200 µL prepared standard into the first wells and create standard dilutions by transferring 100 µL from well to well. Discard 100 µL from the last wells.
Alternatively external standard dilution in tubes (see “External standard dilution” on page 3): Pipette 100 µL of these standard dilutions in the microwell strips.
- Add 100 µL Sample Diluent, in duplicate, to the blank wells.
- Add 80 µL Sample Diluent to sample wells.
- Add 20 µL sample in duplicate, to designated sample wells.
- Prepare Biotin-Conjugate.
- Add 50 µL Biotin-Conjugate to all wells.
- Cover microwell strips and incubate 3 hours at room temperature (18° to 25°C).
- Prepare Streptavidin-HRP.
- Empty and wash microwell strips 4 times with Wash Buffer.
- Add 100 µL diluted Streptavidin-HRP to all wells.
- Cover microwell strips and incubate 1 hour at room temperature (18° to 25°C).
- Empty and wash microwell strips 4 times with Wash Buffer.
- Add 100 µL of TMB Substrate Solution to all wells.

16. Incubate the microwell strips for about 10 minutes at room temperature (18° to 25°C).
17. Add 100 µL Stop Solution to all wells.
18. Blank microwell reader and measure color intensity at 450 nm.

Note: If instructions in this protocol have been followed, samples have been diluted 1:5 (20 µL sample + 80 µL Sample Diluent) and the concentration read from the standard curve must be multiplied by the dilution factor (x 5).

Customer and technical support

Visit thermofisher.com/support for the latest service and support information.

- Worldwide contact telephone numbers
- Product support information
 - Product FAQs
 - Software, patches, and updates

- Training for many applications and instruments
- Order and web support
- Product documentation
 - User guides, manuals, and protocols
 - Certificates of Analysis
 - Safety Data Sheets (SDSs; also known as MSDSs)

Note: For SDSs for reagents and chemicals from other manufacturers, contact the manufacturer.

Limited product warranty

Life Technologies Corporation and/or its affiliate(s) warrant their products as set forth in the Life Technologies' General Terms and Conditions of Sale at www.thermofisher.com/us/en/home/global/terms-and-conditions.html. If you have any questions, please contact Life Technologies at www.thermofisher.com/support.



Bender MedSystems GmbH | Campus Vienna Biocenter 2 | 1030 Vienna, Austria

For descriptions of symbols on product labels or product documents, go to thermofisher.com/symbols-definition.

The information in this guide is subject to change without notice.

DISCLAIMER: TO THE EXTENT ALLOWED BY LAW, THERMO FISHER SCIENTIFIC INC. AND/OR ITS AFFILIATE(S) WILL NOT BE LIABLE FOR SPECIAL, INCIDENTAL, INDIRECT, PUNITIVE, MULTIPLE, OR CONSEQUENTIAL DAMAGES IN CONNECTION WITH OR ARISING FROM THIS DOCUMENT, INCLUDING YOUR USE OF IT.

Important Licensing Information: These products may be covered by one or more Limited Use Label Licenses. By use of these products, you accept the terms and conditions of all applicable Limited Use Label Licenses.

©2018 Thermo Fisher Scientific Inc. All rights reserved. All trademarks are the property of Thermo Fisher Scientific and its subsidiaries unless otherwise specified. All other trademarks are the property of their respective owners.