

# LYVE1 Monoclonal Antibody (ALY7), eFluor 660, eBioscience™

Product Details	
Size	100 µg
Species Reactivity	Mouse
Published Species	Mouse
Host/Isotype	Rat / IgG1, kappa
Recommended Isotype Control	Rat IgG1 kappa Isotype Control (eBRG1), eFluor 660, eBioscience™
Class	Monoclonal
Type	Antibody
Clone	ALY7
Conjugate	eFluor® 660
Form	Liquid
Concentration	0.2 mg/mL
Purification	Affinity chromatography
Storage buffer	PBS, pH 7.2, with 0.1% gelatin
Contains	0.09% sodium azide
Storage conditions	4° C, store in dark, DO NOT FREEZE!
RRID	AB_10597449

Applications	Tested Dilution	Publications
Immunohistochemistry (IHC)	-	11 Publications
Immunohistochemistry (Frozen) (IHC (F))	1-10 µg/mL	-
Immunocytochemistry (ICC/IF)	1-10 µg/mL	1 Publication
Flow Cytometry (Flow)	Assay-Dependent	9 Publications

## Product Specific Information

Description: The monoclonal antibody ALY7 recognizes mouse LYVE-1, a transmembrane glycoprotein with similarity to CD44. The extracellular domain contains a conserved hyaluronan binding domain also found in CD44. Expression is found on lymphatic and liver endothelial cells and some populations of macrophages. The lymphatic system is responsible for transporting proteins and cells (especially dendritic cells) to tissues throughout the body, thereby acting as immune surveyors. LYVE-1 is one characteristic protein, along with podoplanin, PROX-1, Tie-2 and VEGFR-3, that is expressed on lymphatic endothelial cells (LECS). The ligand for LYVE-1 is hyaluronan, a large mucopolysaccharide. Although LYVE-1 can bind hyaluronan in vitro, the site for ligand binding in vivo is masked by sialylated O-linked glycan chains. It is postulated that binding to ligand requires modification/unmasking to expose the binding site. The development and remodeling of the endothelium after injury is an area of extensive study. When transplanted, hematopoietic stem cells (HSCs) can give rise to LECs that integrate into the endothelium in normal and metastatic tissue.

Applications Reported: This ALY7 antibody has been reported for use in flow cytometric analysis and immunohistology staining of frozen tissue sections.

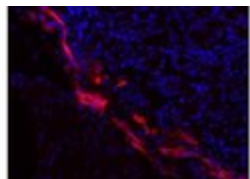
Applications Tested: This ALY7 antibody has been tested by flow cytometric analysis of transfected cells or IHC on mouse tissue. This can be used at 1-10 µg/mL for IHC. It is recommended to titer the antibody in the application of interest.

eFluor® 660 is a replacement for Alexa Fluor® 647. eFluor® 660 emits at 659 nm and is excited with the red laser (633 nm). Please make sure that your instrument is capable of detecting this fluorochrome.

Excitation: 633-647 nm; Emission: 668 nm; Laser: Red Laser.

Filtration: 0.2 µm post-manufacturing filtered.

## Product Images For LYVE1 Monoclonal Antibody (ALY7), eFluor 660, eBioscience™



### LYVE1 Antibody (50-0443-82) in IHC (F)

Immunohistochemistry of cryosections of mouse intestine at 10 µg/mL of Anti-Mouse Lyve-1 eFluor® 660.

---

[View more figures on thermofisher.com](https://www.thermofisher.com)

## 21 References

### Immunohistochemistry (11)

#### Scientific reports

#### Integrins mediate placental extracellular vesicle trafficking to lung and liver in vivo.

"Published figure using LYVE1 monoclonal antibody (Product # 50-0443-82) in Immunohistochemistry"

Authors: Nguyen SL,Ahn SH,Greenberg JW,Collaer BW,Agnew DW,Arora R,Petroff MG

**Species**  
Not Applicable

**Dilution**  
Not Cited

**Year**  
2021

#### Frontiers in physiology

#### Complex Non-sinus-associated Pachymeningeal Lymphatic Structures: Interrelationship With Blood Microvasculature.

"Published figure using LYVE1 monoclonal antibody (Product # 50-0443-82) in Immunofluorescence"

Authors: Glinskii OV,Huxley VH,Xie L,Bunyak F,Palaniappan K,Glinsky VV

**Species**  
Not Applicable

**Dilution**  
Not Cited

**Year**  
2020

[View more IHC references on thermofisher.com](#)

### Immunocytochemistry (1)

#### Journal of leukocyte biology

#### Long-term consequences of topical dexamethasone treatment during acute corneal HSV-1 infection on the immune system.

"Published figure using LYVE1 monoclonal antibody (Product # 50-0443-82) in Immunofluorescence"

Authors: Chucair-Elliott AJ,Carr MM,Carr DJJ

**Species**  
Not Applicable

**Dilution**  
Not Cited

**Year**  
2017

### Flow Cytometry (9)

#### Nature communications

#### Alveolar regeneration through a Krt8+ transitional stem cell state that persists in human lung fibrosis.

"50-0443 was used in Flow cytometry/Cell sorting to propose that in lung fibrosis, perturbed molecular checkpoints on the way to terminal differentiation can cause aberrant persistence of regenerative intermediate stem cell states."

Authors: Strunz M,Simon LM,Ansari M,Kathiriya JJ,Angelidis I,Mayr CH,Tsidiridis G,Lange M,Mattner LF,Yee M,Ogar P,Sengupta A,Kukhtevich I,Schneider R,Zhao Z,Voss C,Stoeger T,Neumann JHL,Hilgendorff A,Behr J,O'Reilly M,Lehmann M,Burgstaller G,Königshoff M,Chapman HA,Theis FJ,Schiller HB

**Species**  
Mouse

**Dilution**  
Not Cited

**Year**  
2020

[View more Flow references on thermofisher.com](#)

### More applications with references on thermofisher.com

For Research Use Only. Not for use in diagnostic procedures. Not for resale without express authorization. Products are warranted to operate or perform substantially in conformance with published Product specifications in effect at the time of sale, as set forth in the Production documentation, specifications and/or accompanying package inserts ("Documentation"). No claim of suitability for use in applications regulated by FDA is made. The warranty provided herein is valid only when used by properly trained individuals. Unless otherwise stated in the Documentation, this warranty is limited to one year from date of shipment when the Product is subjected to normal, proper and intended usage. This warranty does not extend to anyone other than the Buyer. Any model or sample furnished to Buyer is merely illustrative of the general type and quality of goods and does not represent that any Product will conform to such model or sample. NO OTHER WARRANTIES, EXPRESS OR IMPLIED, ARE GRANTED INCLUDING WITHOUT LIMITATION, IMPLIED WARRANTIES OF MERCHANTABILITY, FITNESS FOR ANY PARTICULAR PURPOSE, OR NON-INFRINGEMENT. BUYER'S EXCLUSIVE REMEDY FOR NON-CONFORMING PRODUCTS DURING THE WARRANTY PERIOD IS LIMITED TO REPAIR, REPLACEMENT OF OR REFUND FOR THE NON-CONFORMING PRODUCT(S) AT SELLER'S SOLE OPTION. THERE IS NO OBLIGATION TO REPAIR, REPLACE OR REFUND FOR PRODUCTS AS THE RESULT OF (I) ACCIDENT, DISASTER OR EVENT OF FORCE MAJEURE, (II) MISUSE, FAULT OR NEGLIGENCE OF OR BY BUYER, (III) USE OF THE PRODUCTS IN A MANNER FOR WHICH THEY WERE NOT DESIGNED, OR (IV) IMPROPER STORAGE AND HANDLING OF THE PRODUCTS. Unless otherwise expressly stated on the Product or in the documentation accompanying the Product, the Product is intended for research only and is not to be used for any other purpose, including without limitation, unauthorized commercial uses, in vitro diagnostic uses, ex vivo or in vivo therapeutic uses, or any type of consumption by or application to human or animals.