

BCL6 Monoclonal Antibody (BCL-DWN), PE, eBioscience™

Product Details	
Size	100 µg
Species Reactivity	Mouse
Published Species	Mouse
Host/Isotype	Rat / IgG2a, kappa
Recommended Isotype Control	Rat IgG2a kappa Isotype Control (eBR2a), PE, eBioscience™
Class	Monoclonal
Type	Antibody
Clone	BCL-DWN
Conjugate	PE
Form	Liquid
Concentration	0.2 mg/mL
Purification	Affinity chromatography
Storage buffer	PBS, pH 7.2, with 0.1% gelatin
Contains	0.09% sodium azide
Storage conditions	4° C, store in dark, DO NOT FREEZE!
RRID	AB_2572621

Applications	Tested Dilution	Publications
Flow Cytometry (Flow)	0.25 µg/test	3 Publications

Product Specific Information

Description: This BCL-DWN monoclonal antibody reacts with mouse Bcl-6, which is also known as B-cell lymphoma 6. A member of the POZ family of transcriptional repressors, Bcl-6 is expressed most abundantly in germinal center B cells, as well as in differentiating and activated B cells. This 79-kDa protein is essential for germinal center B cell proliferation and survival. Moreover, during B cell development, Bcl-6 plays an important role in promoting pre-B cell survival to enable the generation of a diverse B cell repertoire. Moreover, Bcl-6 is expressed constitutively in diffuse large B cell lymphomas (DLBCLs), Burkitt's lymphoma, and non-Hodgkin's lymphoma. Reports also suggest expression of Bcl-6 in CD4+ T follicular helper cells and memory T cells. Bcl-6 has been reported to be antagonized by Blimp-1.

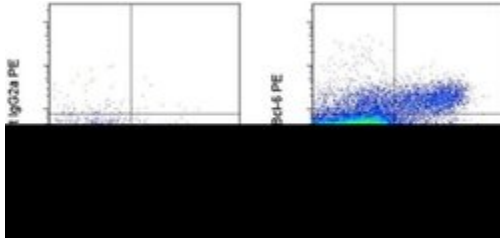
Applications Reported: This BCL-DWN antibody has been reported for use in intracellular staining followed by flow cytometric analysis.

Applications Tested: This BCL-DWN antibody has been tested by flow cytometric analysis of splenocytes isolated from sheep red blood cell-immunized mice. This can be used at less than or equal to 0.25 µg per test. A test is defined as the amount (µg) of antibody that will stain a cell sample in a final volume of 100 µL. Cell number should be determined empirically but can range from 10⁵ to 10⁸ cells/test. It is recommended that the antibody be carefully titrated for optimal performance in the assay of interest.

Excitation: 488-561 nm; **Emission:** 578 nm; **Laser:** Blue Laser, Green Laser, Yellow-Green Laser.

Filtration: 0.2 µm post-manufacturing filtered.

Product Images For BCL6 Monoclonal Antibody (BCL-DWN), PE, eBioscience™



BCL6 Antibody (12-5453-82) in Flow

Splenocytes isolated from sheep red blood cell-immunized mice were stained with Anti-Human/Mouse GL7 eFluor® 660 (Product # 50-5902-82) followed by intracellular staining with 0.125 µg of Rat IgG2a K Isotype Control PE (Product # 12-4321-80) or Anti-Mouse Bcl-6 PE using the Foxp3/Transcription Factor Staining Buffer Set (Product # 00-5523-00) and protocol. Cells expressing CD11c, F4/80, Gr-1, CD4, and CD8 were excluded, while total CD45R (B220)+ cells were used for analysis.

3 References

Flow Cytometry (3)

Nature communications

Extrafollicular CD4⁺ T-B interactions are sufficient for inducing autoimmune-like chronic graft-versus-host disease.

"12-5453 was used in Flow cytometry/Cell sorting to support that Stat3- and BCL6-dependent extrafollicular CD4⁺ T and B interactions play critical functions in the pathogenesis of chronic graft-versus-host disease."

Authors: Deng R,Hurtz C,Song Q,Yue C,Xiao G,Yu H,Wu X,Muschen M,Forman S,Martin PJ,Zeng D

Species
Mouse

Dilution
1:100

Year
2017

PloS one

Immunogenicity of Isogenic IgG in Aggregates and Immune Complexes.

"12-5453 was used in Flow cytometry/Cell sorting to analyse CD4 T cell reactions against IgG in various physical states."

Authors: St Clair JB,Detanico T,Aviszus K,Kirchenbaum GA,Christie M,Carpenter JF,Wysocki LJ

Species
Mouse

Dilution
Not Cited

Year
2017

[View more Flow references on thermofisher.com](#)

For Research Use Only. Not for use in diagnostic procedures. Not for resale without express authorization. Products are warranted to operate or perform substantially in conformance with published Product specifications in effect at the time of sale, as set forth in the Production documentation, specifications and/or accompanying package inserts ("Documentation"). No claim of suitability for use in applications regulated by FDA is made. The warranty provided herein is valid only when used by properly trained individuals. Unless otherwise stated in the Documentation, this warranty is limited to one year from date of shipment when the Product is subjected to normal, proper and intended usage. This warranty does not extend to anyone other than the Buyer. Any model or sample furnished to Buyer is merely illustrative of the general type and quality of goods and does not represent that any Product will conform to such model or sample. NO OTHER WARRANTIES, EXPRESS OR IMPLIED, ARE GRANTED INCLUDING WITHOUT LIMITATION, IMPLIED WARRANTIES OF MERCHANTABILITY, FITNESS FOR ANY PARTICULAR PURPOSE, OR NON INFRINGEMENT. BUYER'S EXCLUSIVE REMEDY FOR NON-CONFORMING PRODUCTS DURING THE WARRANTY PERIOD IS LIMITED TO REPAIR, REPLACEMENT OF OR REFUND FOR THE NON-CONFORMING PRODUCT(S) AT SELLER'S SOLE OPTION. THERE IS NO OBLIGATION TO REPAIR, REPLACE OR REFUND FOR PRODUCTS AS THE RESULT OF (I) ACCIDENT, DISASTER OR EVENT OF FORCE MAJEURE, (II) MISUSE, FAULT OR NEGLIGENCE OF OR BY BUYER, (III) USE OF THE PRODUCTS IN A MANNER FOR WHICH THEY WERE NOT DESIGNED, OR (IV) IMPROPER STORAGE AND HANDLING OF THE PRODUCTS. Unless otherwise expressly stated on the Product or in the documentation accompanying the Product, the Product is intended for research only and is not to be used for any other purpose, including without limitation, unauthorized commercial uses, in vitro diagnostic uses, ex vivo or in vivo therapeutic uses, or any type of consumption by or application to human or animals.