

# Ki-67 Monoclonal Antibody (SolA15), PE-eFluor 610, eBioscience™

Product Details	
Size	100 µg
Species Reactivity	Dog, Cynomolgus monkey, Human, Mouse, Non-human primate, Rat
Published Species	Mouse, Human
Host/Isotype	Rat / IgG2a, kappa
Recommended Isotype Control	Rat IgG2a kappa Isotype Control (eBR2a), PE-eFluor 610, eBioscience™
Class	Monoclonal
Type	Antibody
Clone	SolA15
Conjugate	PE-eFluor® 610
Form	Liquid
Concentration	0.2 mg/mL
Purification	Affinity chromatography
Storage buffer	PBS, pH 7.2
Contains	0.09% sodium azide
Storage conditions	4° C, store in dark, DO NOT FREEZE!
RRID	AB_2574620

Applications	Tested Dilution	Publications
Flow Cytometry (Flow)	0.125 µg/test	45 Publications
Functional Assay (FN)	-	1 Publication

## Product Specific Information

**Description:** The monoclonal antibody SolA15 recognizes mouse and rat Ki-67, a 300 kDa nuclear protein. Ki-67 is present during all active phases of the cell cycle (G1, S, G2, and mitosis), but is absent from resting cells (G0). Ki-67 is detected within the nucleus during interphase but redistributes to the chromosomes during mitosis. Ki-67 is used as a marker for determining the growth fraction of a given population of cells. In studies of tumor cells, the "Ki-67 labeling index" refers to the number of Ki-67 positive cells within the population and this is used to predict outcome of particular cancer types. Ki-67 has been shown to interact with the DNA-bound protein chromobox protein homolog 3 (CBX3) (heterochromatin).

The SolA15 antibody also recognizes human, non-human primate and canine Ki-67.

**Applications Reported:** This SolA15 antibody has been reported for use in intracellular staining followed by flow cytometric analysis.

**Applications Tested:** This SolA15 antibody has been tested by intracellular staining and flow cytometric analysis of mouse splenocytes using the Foxp3/Transcription Factor Staining Buffer Set (cat. 00-5523) and protocol. Refer to Best Protocols for Staining Protocol (refer to Protocol B: One-step protocol for intracellular (nuclear) proteins). This can be used at less than or equal to 0.125 µg per test. A test is defined as the amount (µg) of antibody that will stain a cell sample in a final volume of 100 µL. Cell number should be determined empirically but can range from 10<sup>5</sup> to 10<sup>8</sup> cells/test. It is recommended that the antibody be carefully titrated for optimal performance in the assay of interest.

PE-eFluor® 610 can be excited with laser lines from 488-561 nm and emits at 607 nm. We recommend using a 610/20 band pass filter (equivalent to PE-Texas Red®). Please make sure that your instrument is capable of detecting this fluorochrome.

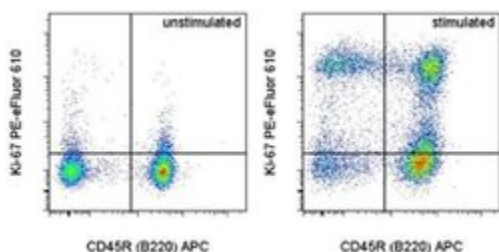
Light sensitivity: This tandem dye is sensitive to photo-induced oxidation. Please protect this vial and stained samples from light.

Fixation: Samples can be stored in IC Fixation Buffer (cat. 00-8222) (100 µL of cell sample + 100 µL of IC Fixation Buffer) or 1-step Fix/Lyse Solution (cat. 00-5333) for up to 3 days in the dark at 4°C with minimal impact on brightness and FRET efficiency /compensation. Some generalizations regarding fluorophore performance after fixation can be made, but clone specific performance should be determined empirically.

Excitation: 488-561 nm; Emission: 607 nm; Laser: Blue Laser, Green Laser, Yellow-Green Laser.

Filtration: 0.2 µm post-manufacturing filtered.

## Product Images For Ki-67 Monoclonal Antibody (SoIA15), PE-eFluor 610, eBioscience™



### Ki-67 Antibody (61-5698-82) in Flow

Intracellular staining of unstimulated (left) or 2-day Anti-Mouse CD3e Functional Grade Purified (Product # 16-0031-82)-stimulated (right) BALB/c splenocytes with Anti-Human/Mouse CD45R (B220) APC (Product # 17-0452-82) and 0.06 µg of Anti-Mouse/Rat Ki-67 PE-eFluor® 610 (right) using the Foxp3/Transcription Factor Staining Buffer Set (Product # 00-5523-00) and protocol. Cells in the lymphocyte gate were used for analysis.

[View more figures on thermofisher.com](https://www.thermofisher.com)

## 46 References

### Flow Cytometry (45)

Frontiers in cellular neuroscience

#### **Pax6 Lengthens G1 Phase and Decreases Oscillating Cdk6 Levels in Murine Embryonic Cortical Progenitors.**

"Published figure using Ki-67 monoclonal antibody (Product # 61-5698-82) in Flow Cytometry"

Authors: Mi D,Manuel M,Huang YT,Mason JO,Price DJ

**Species**  
Not Applicable

**Dilution**  
Not Cited

**Year**  
2021

Cell reports

#### **An mTORC1-dependent switch orchestrates the transition between mouse spermatogonial stem cells and clones of progenitor spermatogonia.**

"Published figure using Ki-67 monoclonal antibody (Product # 61-5698-82) in Flow Cytometry"

Authors: Suzuki S,McCarrey JR,Hermann BP

**Species**  
Not Applicable

**Dilution**  
Not Cited

**Year**  
2021

[View more Flow references on thermofisher.com](#)

### Functional Assay (1)

PloS one

#### **Myeloid cells expressing VEGF and arginase-1 following uptake of damaged retinal pigment epithelium suggests potential mechanism that drives the onset of choroidal angiogenesis in mice.**

Authors: Liu J,Copland DA,Horie S,Wu WK,Chen M,Xu Y,Paul Morgan B,Mack M,Xu H,Nicholson LB,Dick AD

**Species**  
Not Applicable

**Dilution**  
Not Cited

**Year**  
2015

### More applications with references on thermofisher.com

For Research Use Only. Not for use in diagnostic procedures. Not for resale without express authorization. Products are warranted to operate or perform substantially in conformance with published Product specifications in effect at the time of sale, as set forth in the Production documentation, specifications and/or accompanying package inserts ("Documentation"). No claim of suitability for use in applications regulated by FDA is made. The warranty provided herein is valid only when used by properly trained individuals. Unless otherwise stated in the Documentation, this warranty is limited to one year from date of shipment when the Product is subjected to normal, proper and intended usage. This warranty does not extend to anyone other than the Buyer. Any model or sample furnished to Buyer is merely illustrative of the general type and quality of goods and does not represent that any Product will conform to such model or sample. NO OTHER WARRANTIES, EXPRESS OR IMPLIED, ARE GRANTED INCLUDING WITHOUT LIMITATION, IMPLIED WARRANTIES OF MERCHANTABILITY, FITNESS FOR ANY PARTICULAR PURPOSE, OR NON INFRINGEMENT. BUYER'S EXCLUSIVE REMEDY FOR NON-CONFORMING PRODUCTS DURING THE WARRANTY PERIOD IS LIMITED TO REPAIR, REPLACEMENT OF OR REFUND FOR THE NON-CONFORMING PRODUCT(S) AT SELLER'S SOLE OPTION. THERE IS NO OBLIGATION TO REPAIR, REPLACE OR REFUND FOR PRODUCTS AS THE RESULT OF (I) ACCIDENT, DISASTER OR EVENT OF FORCE MAJEURE, (II) MISUSE, FAULT OR NEGLIGENCE OF OR BY BUYER, (III) USE OF THE PRODUCTS IN A MANNER FOR WHICH THEY WERE NOT DESIGNED, OR (IV) IMPROPER STORAGE AND HANDLING OF THE PRODUCTS. Unless otherwise expressly stated on the Product or in the documentation accompanying the Product, the Product is intended for research only and is not to be used for any other purpose, including without limitation, unauthorized commercial uses, in vitro diagnostic uses, ex vivo or in vivo therapeutic uses, or any type of consumption by or application to human or animals.